



## MORE THAN JUST **A FAN SUPPLIER**

The most diverse range of industrial fans & accessories available from a single source...

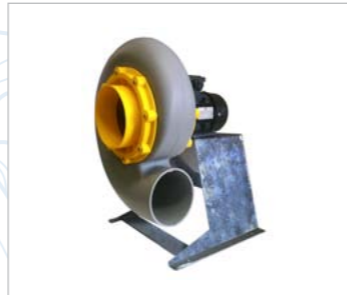
# SINGLE INLET CENTRIFUGAL

**Compact Dimensioned Centrifugal Fans**

**High Pressure Centrifugal Fans**

**Medium Pressure Centrifugal Fans**

**Plastic Centrifugal Fans**



External rotor motor  
Speed controllable

Single inlet  
Standard motors

Robust metal construction  
Single or three phase

Corrosion resistant  
Polypropylene construction

Available in AC or Electronically Commutated (EC)

Suitable for filtration, forced draught or material handling applications,

Suitable for operation up to 120°C as standard

Medium pressure - Suitable for laboratory fume cupboard or process applications

1,100Pa max | 10,000m<sup>3</sup>/h

17,000Pa max | 35,000m<sup>3</sup>/h max

3,000Pa max | 21,000m<sup>3</sup>/h max

2000Pa max | 17,000m<sup>3</sup>/h max

# BACKWARD CURVED CENTRIFUGAL

**Backward Curved Centrifugal Fan Modules**

**Industrial Backward Curved Blowers**

**Backward Curved Motorised Impellers**

**High Power Fan Modules**



External rotor motors  
Single & three phase, AC and EC

Standard motor  
Medium pressure & High temperature

External rotor motors  
Single & three phase, AC and EC

Standard motors  
AC or EC

Suitable for most HVAC, filtration or electronic cooling applications

Suitable for industrial applications including spraybooths

Suitable for most HVAC, filtration or electronic cooling applications

Suitable for Air handling units & commercial heat recovery units

Size from Ø192 impeller up to Ø710

Size from Ø220 up to Ø1,000

Size from Ø133 to Ø710

Size Ø250 to Ø1000

1,500Pa max | 17,500m<sup>3</sup>/h max

3,200Pa | 75,000m<sup>3</sup>/h max

1,400Pa max | 17,500m<sup>3</sup>/h max

2,100Pa max | 70,000m<sup>3</sup>/h max

# DOUBLE INLET CENTRIFUGAL

**Forward Curved Centrifugal Fans**

**Forward Curved Centrifugal Fans**

**EC energy Efficient Blowers**

**Forward Curved Centrifugal Fans**

**Low Pressure Centrifugal Fans**



External rotor motors  
Single or three phase

External rotor motors  
Single or three phase

Electronically Commutated  
External rotor motor

External rotor motor  
Single phase

Inch Blowers  
AC or EC versions available

High efficiency  
Suitable for general ventilation & Air conditioning applications

High slippage characteristics  
Suitable for clean room & filtered applications

Integrated electronics - Options include alarm, speed sensor, constant volume/airflow

Industry standard dimensions,  
Suitable for general ventilation & Air conditioning applications

Industry standard dimensions,  
Suitable for general ventilation & Air conditioning applications

900Pa max | 13,000m<sup>3</sup>/h max

1300Pa max | 12,000m<sup>3</sup>/h max

475Pa max | 9560m<sup>3</sup>/h max

700Pa max | 950m<sup>3</sup>/h max

500Pa max | 7250m<sup>3</sup>/h max



# AXIAL FANS

**Frame Axial Fans**

**Sickle Blade Axial Fans**

**Plate or Cased Industrial Axial Fans**

**Fan Motor Assemblies**

**High Efficiency Axial Fans**



Industry standard compact fans,  
in AC, DC or EC

External rotor motors  
Single or three phase, AC or EC

Standard motor up to IP65  
Single or three phase

Standard motor to IP55  
AC or EC

External rotor motors  
Plate or guard mounted

Suitable for refrigeration or electronic cooling applications

Suitable for all HVAC applications

Suitable for heavy industrial applications & building ventilation

Suitable for freezer & refrigeration applications

Suitable for cooling & ventilating applications

270Pa max | 1705m<sup>3</sup>/h max

400Pa max | 33,000m<sup>3</sup>/h max

1,800Pa max | 160,000m<sup>3</sup>/h max

120Pa max | 2,000m<sup>3</sup>/h max

300Pa max | 4,000m<sup>3</sup>/h max

## THERMAL MANAGEMENT & CONTROL PANELS

Axair fans range of thermal management accessories is specially designed for the electrical & electronic enclosure and control panel industry. It includes a vast choice of door mounted fan filter units IP54 or IP55, roof mounted fans, heaters, thermostats, lights and other accessories.



## CORROSIVE FUME FANS

All polypropylene moulded construction fans, designed to extract and resist the widest range of corrosive chemical fumes in laboratory & industrial fume extraction.

A wide range of accessories are available including air speed controllers and alarms, ancillaries for complete installation.



## EC FANS & ENERGY EFFICIENT PRODUCTS

All our products are now available with either energy efficient AC motors (IE2 & IE3) or (electronically commutated) versions, including frame axial fans, external rotor motor fans, inch blowers and industrial plate and centrifugal fans.



## ATEX FANS

ATEX compliant fans can be supplied in semi-conducting polypropylene, fabricated steel with copper or aluminium non-sparking components, cast aluminium or stainless steel.

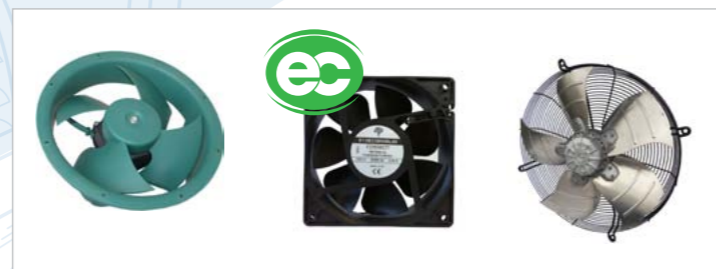
Available in centrifugal, axial or inline duct versions.



## REFRIGERATION FANS

Electronically Commutated or standard AC selection of condenser & evaporator motors and fans for commercial refrigerators, refrigerated display cabinets and other applications.

EC versions with integrated electronic control, high efficiency, low noise, wide temperature range and IP55.



## RAILWAY APPLICATIONS

Selection of fans and air movement products, particularly designed for rolling stock applications and manufactured to highest international railway standards (including fire protection, shock & vibration, electrical & electronic motor protection).



## HOT GAS & HIGH TEMPERATURE

Designed to handle high temperature from 100°C up to 300°C. Available in a wide range of sizes and configurations including axial and centrifugal. Versions with motors located outside the airstream or fitted with temperature resistant windings.



## SMOKE FANS

Axair can offer a complete design service and a full range of fans for emergency smoke extract, escape route pressurisation and car park ventilation.

Induction type jetfans, smoke extract for industrial & commercial buildings, pressurisation kits for smoke control in escape routes.



## MILITARY & AEROSPACE APPLICATIONS

Typical applications also include special commercial fields where shock, vibration, high & low temperatures, humidity and salt spray require special construction.

AC & DC axial fans, 400Hz military spec fans, AC or DC high performance.



## COMMERCIAL FANS

A large selection of roof fans, inline duct fans and kitchen extraction fitted with backward curved motorised impellers. All fitted with either external rotor motors or standard industrial motors. All available with EC motors.

# CONTROLLERS



Transformer speed controllers and electronic voltage controllers (phase angle) for external rotor motors and a selection of standard industrial motors.

Electronic Variable Speed drives specifically designed for most types of standard industrial motors, used for speed control and energy savings. Controllability features available include manual, temperature, humidity, CO<sup>2</sup> or pressure.

Fume cupboard controllers with either basic air speed monitoring and alarm feature, or with additional air speed controllability when used in conjunction with inverter drives or electronic dampers.

Smaller, simplified fume cupboard controller with basic alarm system especially designed for light duty operation (eg school fume cupboards).

# ACCESSORIES



Axair offers a comprehensive range of accessories for all products, including thermal management accessories for control panels (Covers, door switches...), fittings for corrosive fume fan installations (both indoor and outdoor), ancillaries for ducted

applications (brackets, clamps, adaptors, louvers...), inlet rings for motorised impellers, finger guards (inlet or outlet) for all fans and electrical components (isolators, starters & capacitors).



## AXAIR IS AN INDEPENDENT INDUSTRIAL FAN MANUFACTURER AND DISTRIBUTOR.

Established in 1992, Axair Fans UK Limited is a fully independent distributor and manufacturer of fans & motors.

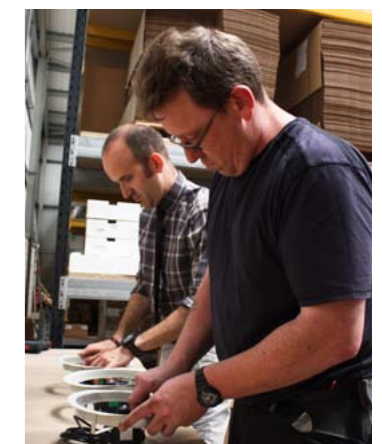
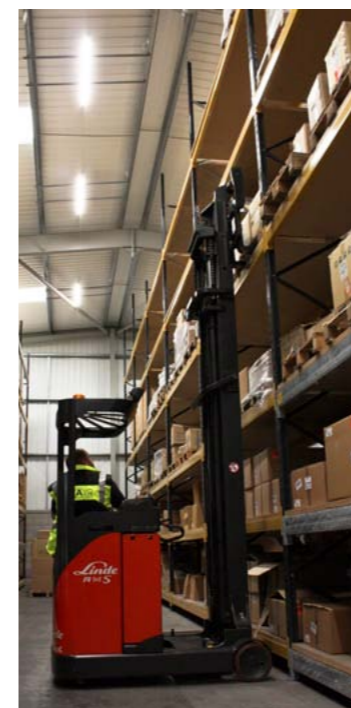
Axair is the exclusive representative for manufacturers Ecofit and SEAT of France, Fandis and Costech of Italy, Sodeca of Spain, Rosenberg of Germany and Wellington of New Zealand. As a result of our long standing relationship with each of our principals, we are able to advise on all fan selections and deal with the most complex of technical issues.

Axair has developed unique market experience which allows us to specify the right fan for any industrial application, from hazardous fume extract to refrigeration, from electronic cooling to railway applications.

Axair Fans operates from a 12,000ft<sup>2</sup> high bay warehouse containing standard and non-standard references, component parts and accessories allowing us to manufacture and assemble standard or special air movement products (including ATEX) from stock.

We receive deliveries from our suppliers on a weekly basis, which guarantees a fast & efficient service for our wide range of customers including OEM's, contractors, distributors and repairers.

Our team of internal and external specialist sales engineers are at your disposal to discuss your enquiry and help you to specify the right fan, whether you are a consultant, design engineer, purchasing manager or sole trader.



# AXAIR

FANS UK LIMITED



Lowfield Drive  
Centre 500  
Wolstanton  
Newcastle-Under-Lyme  
ST5 0UU



01782 349430



01782 349439



[sales@axair-fans.co.uk](mailto:sales@axair-fans.co.uk)

