

• CUSTOMER SERVICE • INNOVATION • MANUFACTURING • QUALITY • TECHNICAL EXPERTISE • EXCELLENCE • DESIGN •



*The Right Connection<sup>®</sup>*

# Hygienic Products

Customer Service: **+44 (0)1772 323529**

Email: **sales@dixoneurope.co.uk**



[www.dixoneurope.co.uk](http://www.dixoneurope.co.uk)

## Hygienic Fittings



Stainless steel european unions and weld fittings and accessories.

- 3A
- RJT, DIN, SMS, IDF & Clamps type available
- Weld End

### Application:

- Connections to pipework, valves and hose
- Maintenance products

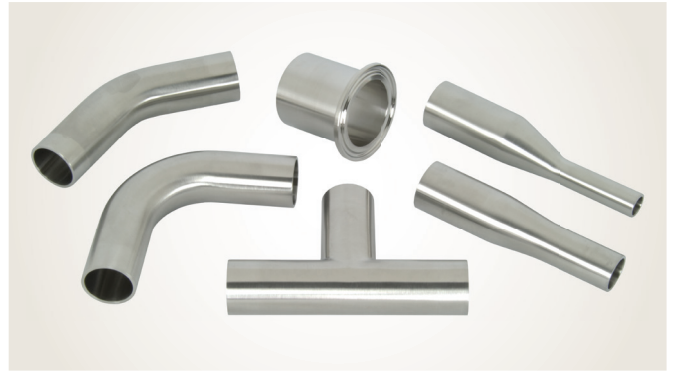
### Materials:

- 304 and 316L stainless steel
- 0.8 standard surface finish
- UK Dairy Standard available

### Sizes:

- ½" - 12" OD

## Pharmaceutical High Purity Products



A range of high purity biopharm weld fittings for use in pharmaceutical industry applications.

- Elbows
- Tees
- Reducers
- Ferrules
- Clamps
- Gaskets

### Materials:

- 316L stainless steel

### Sizes:

- ½" – 4"

### Standard:

- ASME Bio Processing Equipment (ASME BPE)

## Filters/Strainers & Accessories



Filters/Strainers designed to efficiently remove particles from liquid and gases.

Dixon provide a range of full flow, fine/medium strainers.

- In-line Strainers (short/long)
- Side Entry Strainers (long)

### Materials:

- 316L stainless steel

### Standard:

- 3A Sanitary ID & OD (0.8Ra Max ID)

### Additional Accessories are available including:

- Sight Glasses
- Break Away Couplings
- Spanners
- Swivel Joints
- Pipe Hangers
- Gauges

## Fabrication



Full in house CAD capability, 3D design and manufacturing facilities to produce bespoke fabrications to meet customers' requirements

### Applications:

Custom fabricated configurations and tubing including:

- Manifolds
- Wall Plates
- Dip Pipes
- Adaptors
- Specials

### Materials:

- 316 and 304 stainless steel

### Sizes:

- ½" – 12"

## Seat & Process Valves



Manual and automated process valves available with multiple options.

### Features:

- Fully Serviceable
- CIPable

### Application:

- Isolation
- Diversion
- Control
- Aseptic

### Materials:

- 316L Stainless Steel

### Sizes:

- Seat Valves; 1" - 6"
- Butterfly Valves; ½" - 4"
- Ball Valves, 1" - 8"
- Diaphragm: ¼" - 4"

## Mixproof Valves



A range of hygienic and aseptic valves used to separate non-compatible product preventing cross contamination.

### Features:

- Body machined from solid bar
- Standard O-rings
- Service possible without compressed air
- Low cost ownership

### Applications:

- Separation
- Manifold
- Diversion
- Aseptic version with bellows

### Materials:

- 316L

### Sizes:

- 1½" - 4"

## Sampling Valves



Used in stainless steel process systems in a variety of industries, principally Breweries & Dairies.

### Features:

- Valve body from solid bar
- Manual override on actuated valve
- CIPable
- Incline/Angle options

### Application:

- Aseptic sampling
- Bio-check

### Materials:

- 304 and 316L stainless steel

### Sizes:

- 13mm x 1.5mm
- ½" - 2"

## Check Valves



Used in hygienic and industrial applications to prevent backflow.

- 3A
- Various end configurations available
- Air Blow
- Ball
- Spring Return

### Features:

- Quick disconnect clamp for quick and easy cleaning

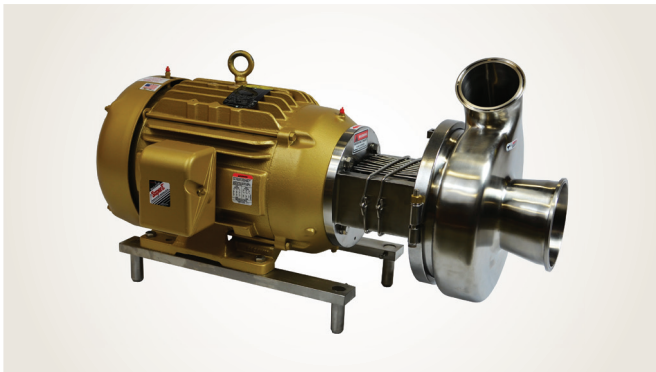
### Materials:

- CF-8m (316) Stainless Steel

### Sizes:

- ½" - 4"

## Centrifugal Pumps



Used to induce flow or raise the pressure of a liquid/product.

### Features:

- Impeller retainer or threaded impeller nut options
- Stamped volute
- Wet ends, motor pump units and carts
- 3A & CIPable

### Applications:

- Unloading
- Fluid transfer
- CIP supply

### Materials:

- 316L
- Buna, EPDM, Silicone and FKM elastomers

### Sizes:

- Inlet 1½" - 6"
- Outlet 1½" - 4"

## Hose Assemblies



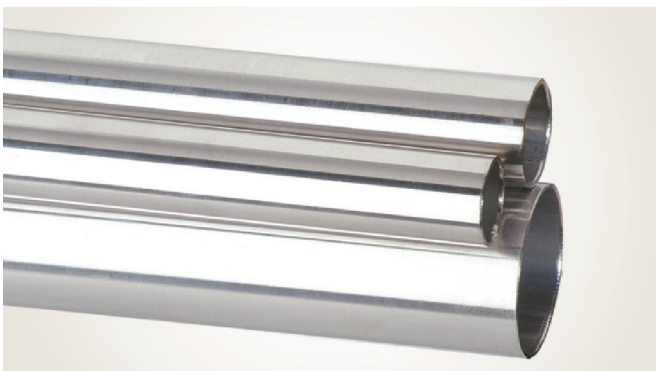
A full range of, hose and hose assemblies for your hygienic requirements.

- Hygienic Food Grade Suction & Delivery Hose
- Silicone Delivery Hose
- Washdown Steam Hose

Odourless and taste free, FDA approved food hose suitable for the transfer of liquid foodstuffs.

Heat traced assemblies using electrical cable, steam & hot water and other special fabrications available on request.

## Tubing



Polished or unpolished ID/OD tubing.

Usually sold in 6m lengths. Custom cut lengths available on request.

### Materials:

- 316 and 304 stainless steel

### Sizes:

- ½" - 8" OD

### Standard:

- UK Dairy
- A270
- ASME BPE

## Hose Management & Onsite Services



Dixon offer a hose management programme designed to help make your facilities as safe, efficient and productive as possible.

The hose management program includes the regular test and inspection of onsite hoses along with a web based documentation and management tool.

Dixon-Hose Connect is a secure, user friendly web based app. It is a source to allow you to access your Hose Maintenance documentation, including Service History reports and Hose Asset Register via unique tag references and hose identifiers, as well as training videos for your site.