



# Capital Full Height (SGL)

Designed using compact laminate and bolt through fixings. Capital Full Height is a robust construction using quality materials. Hardwearing and water resistant provides a floor to ceiling cubicle for any environment.

Solid Grade Laminate (SGL)

Heavy-duty Fittings (SSS)

Made-To-Measure

Pre-drilled Panels



**SKIRMETT**  
WASHROOMS



Hinge



Leg



Over panel



Indicator Lock

# Capital Full Height (SGL)

## Specification

- Doors:** 13mm Solid Grade Compact (SGL) with routed edges and black core
- Overpanel:** 13mm Solid Grade Compact (SGL) with routed edges and black core
- Partitions:** 13mm Solid Grade Compact (SGL) with routed edges and black core
- Pilasters:** 13mm Solid Grade Compact (SGL) with routed edges and black core
- Hardware:** Satin Stainless Steel (SSS) fittings - Pilaster brackets, wall brackets, leg, lock and hinges.

**Overall Cubicle Height -** Made to measure  
Max Floor to Ceiling Height - 2600mm

## Colour Options

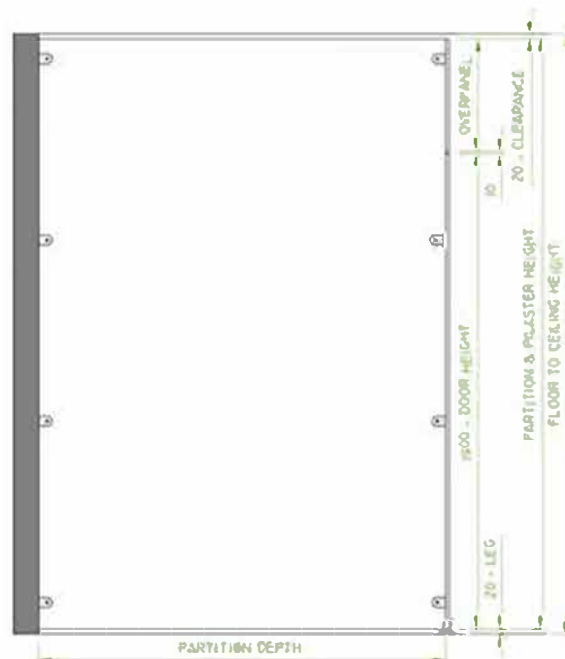
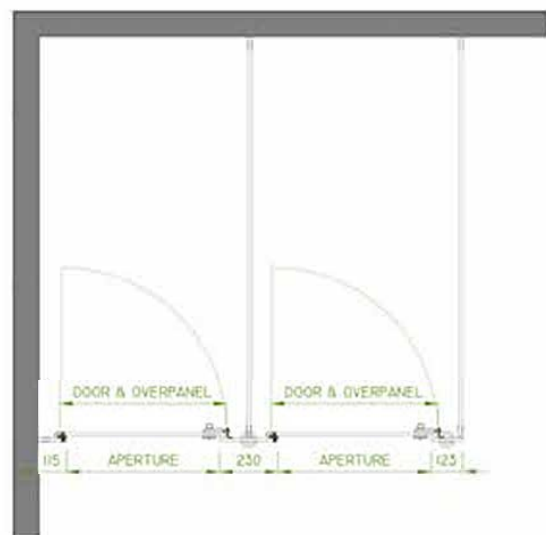
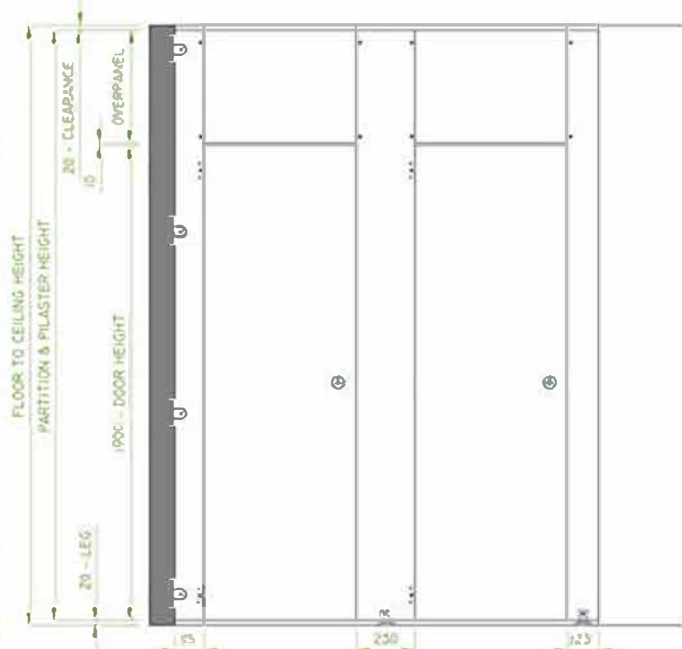
**Doors:** B101, B100, N026, N056, C011, B118, 290 from stock

**Partitions / Pilasters:** B100, B101, 271, 121, 261, 719, 5003

Capital Full Height (SGL) is also available in others colours upon request

## Size Guide

Max Overall Height:	2600mm (20mm from floor)
Max Partition Height:	2560mm (20mm from ceiling)
Partition Depth:	Made to depth required
Max Pilaster Height:	2560mm
End/Wall Pilaster Width:	115/123mm
Centre Pilaster Width:	230mm
Door Width:	Made to measure
Inward Door Height:	1900mm



**SKIRMETT**  
WASHROOMS