

TANK INSPECTION & REFURBISHMENT SERVICE.

Franklin Hodge Industries are able to offer customers the following as part of its' comprehensive *Refurbplus*[®] tank inspection and refurbishment service:

- External Inspection & survey
- Internal inspection & survey following a full drain-down of the tank
- Internal inspection & survey with the tank full, using a remote controlled submarine camera unit

External Inspection & Survey. What we provide for our customers:

Visual inspection and assessment, including if necessary the use of an ultrasound-scanning device, to assist in the assessment of the condition of:

- Tank wall sheets
- Pipe work, spools and flanges
- Covers
- Ancillary equipment, including immersion heaters, valves, contents gauges and level control switches
- Ladders, platforms and hand-railing
- Top and bottom rolled angles
- Holding down brackets and bolts

Internal inspection & survey following a full drain-down of the tank. What we provide for our customers:

Visual inspection and assessment, including if necessary the use of an ultrasound-scanning device, to assist in the assessment of the condition of:

- Tank wall sheets and liners, where fitted
- Pipe work spools and flanges, including suction pump outlet pipe work and anti-vortex devices
- Internal surfaces of the tank cover and the cover support structure
- Internal surfaces of ancillary equipment, such as immersion heater elements and level switches
- Internal ladders, where fitted
- Assessment of the amount of debris and silt present on the tank floor

Note: If an internal survey is requested, an external survey is automatically included.

Internal inspection & survey with the tank full, using a remote controlled submarine camera unit (ROV Survey). No need to drain the tank or system.

What we provide for our customers:

A full survey, allowing an assessment of the interior of the tank, to include:

- Tank wall sheets and liners, where fitted
- Pipe work spools and flanges, including suction pump outlet pipe work and anti-vortex devices
- Internal surfaces of the tank cover and the cover support structure
- Internal surfaces of ancillary equipment, such as immersion heater elements and level switches
- Internal ladders, where fitted
- Assessment of the amount of debris and silt present on the tank floor

Note: If an internal ROV survey is requested, an external survey is automatically included.

What we need from our customers in order to be able to carry out our *Refurbplus*[®] service with as little inconvenience to them or the owners of the tanks, as possible:

- A date when it would be convenient for us to carry out the survey and inspection work.
- Full site address and contact person at the site
- Information on the health and safety requirements applicable to the site, together with the name and contact details of the person responsible for health and safety and if necessary, security at the site.
- The person to whom we should submit our risk assessment and method statement for the work to be carried out.
- Agreement on who will be responsible for the isolation of any pump units and sprinkler/process systems connected to and dependent on the tank(s) to be surveyed and inspected.

***Refurbplus*[®] Tank Refurbishment Service**

Once the survey work has been assessed, our trained and experienced sales team would be pleased to discuss what work needs to be carried out to refurbish and reinstate a tank. Franklin Hodge Industries can carry out a wide range of refurbishment work, from the replacement of pipe work and ancillary equipment, to replacement of tank covers and internal membrane liners.

Safety Qualifications & Accreditation

Our *Refurbplus*[®] site teams are trained to the highest standards in terms of compliance with health and safety law, codes of practice and regulations. Franklin Hodge Industries site teams are continually audited by our own in house Health, Safety, Quality & Environment Manager. Accreditation includes, but is not limited to:

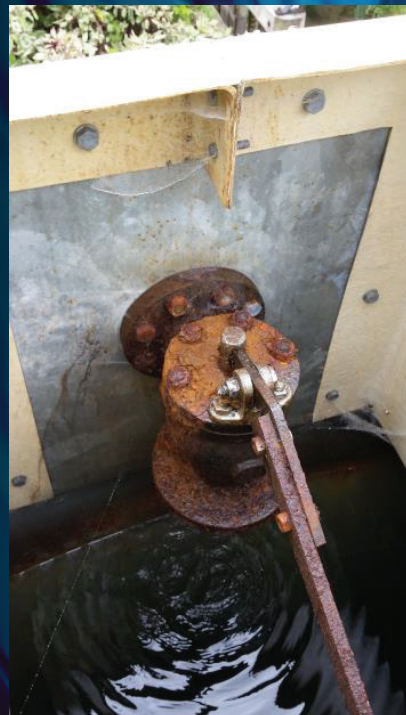
- CSCS Passport to Safety
- Confined space working
- Use of powered access equipment
- Working with electrical equipment and water, particularly with regard to the use of the remote submersible camera unit and in relation to ancillary equipment on the tank

External Inspection & Survey

A lot can be learned from taking a close look at the exterior of a tank in service, even when it is not drained down.



Pin-holes in the tank shell which can lead to a loss of water, even with a lined tank, may also require the replacement of the tank shell plate over time, as corrosion takes hold.



Severe corrosion in pipe work and valve units can lead to an inability to operate the tank when it is needed most.

Internal inspection & survey following a full drain-down of the tank.

By draining down and then entering the tank, it is possible to clear away silt and debris and carry out a closer visual and hand inspection of the state of the internal pipe work and tank interior generally.



Pump suction outlet pipe work and anti-vortex device, showing signs of heavy corrosion to the pipe elbow.



Drain valve. Severe corrosion



Silt and debris present on the tank floor can lead to problems with operating pumps, or other process equipment that draws water from the tank.