



## Rental

Rent conventional and advanced equipment for a range of NDT applications and techniques, including phased array, ultrasonic flaw detection, corrosion mapping, eddy current, hardness testing and thickness measurement.

**Scan here**

with your phone camera to visit the website and browse equipment



# Non-destructive testing

## Equipment rental

### Brochure

## Why choose us?

By working with us, you gain access to:

- Latest technology from leading manufacturers stocked in significant quantities.
- Equipment for various stages of your projects.
- Next working day delivery options with same day delivery and collections also available.
- In house, UK based technical support team.



## Rental solutions for non-destructive testing.

We offer a comprehensive rental fleet of non-destructive testing equipment across UK & Europe.

Covering a number of techniques for advanced and conventional NDT, the fleet includes equipment and accessories for phased array, ultrasonic flaw detection, corrosion mapping, eddy current flaw detection, hardness testing and thickness measurement.

## Benefits of renting from Ashtead Technology.

- Eliminate initial investment cost required to purchase.
- No ongoing maintenance, calibration, servicing or storage costs.
- Access to the latest technology without significant investment.
- Expand your service offering before committing to equipment purchase.
- Trial new equipment or inspection techniques before committing to equipment costs.
- Quick replacements when your own equipment isn't available.
- Next working day delivery options with same day delivery and collections also an option.
- In house, UK based technical support team.

**Want to discuss your project? Contact:**

**+ 44 (0)1462 679 020**

[london@ashtead-technology.com](mailto:london@ashtead-technology.com)

[www.ashtead-technology.com](http://www.ashtead-technology.com)

## Equipment includes:



Advanced ultrasonics  
Pages 3-28



ACFM equipment  
Pages 29-30



Tank inspection  
Pages 31-37



Eddy current  
Pages 38-42



Ultrasonic flaw detection  
Pages 43-49



Thickness measurement  
Pages 50-58



Hardness testing, coating, paint & ferrite inspection  
Pages 59-66



Positive material identification  
Pages 67-70



Thermal inspection  
Pages 71-72



Magnetic particle inspection  
Pages 73-80

[www.ashtead-technology.com](http://www.ashtead-technology.com)

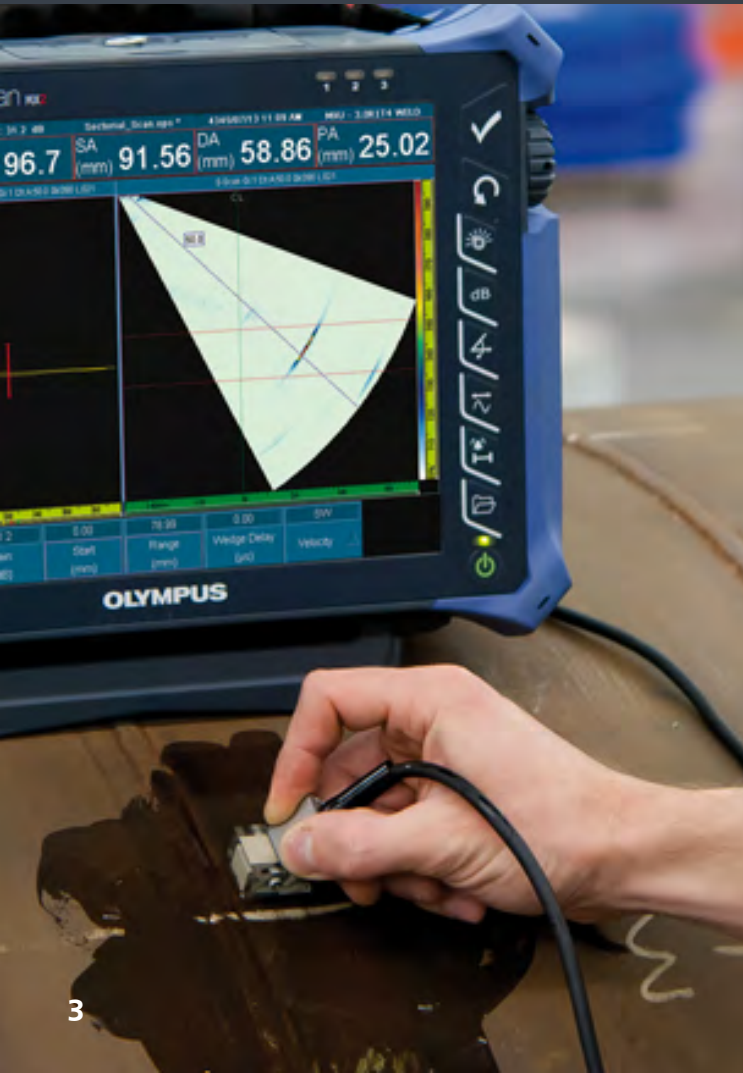


## Advanced ultrasonics

Advanced ultrasonic equipment, probes and accessories for a range of applications.

### Scan here

with your phone camera to view the advanced ultrasonic range online



## Olympus OmniScan X3



Scan to shop me online

### Overview:

- Complete phased array toolbox
- Image early-stage high-temperature hydrogen attack (HTHA)
- Onboard acoustic influence map (AIM) reflectivity simulator to visualise TFM sensitivity and adjust accordingly
- Up to four TFM modes
- Single TOFD menu
- P65 certified rain and dust proof
- Onboard GPS provides the location of data

### Applications:

- TFM and TOFD inspections
- Weld and pipeline inspections
- Corrosion inspection
- HTHA detection
- HIC detection

**EVIDENT**



Scan to shop  
me online

**Overview:**

- Multi-channel ToFD/UT & ToFD/PA – up to 8 groups simultaneously
- Compatible with a range of scanners and probes
- Up to 7 hours battery life

**Applications:**

- Phased array inspection
- TOFD inspection
- General component inspection
- Pressure vessel inspection
- Composite inspection
- Corrosion mapping inspection
- Multi group inspection



Scan to shop  
me online

**Overview:**

- Multi-channel ToFD/UT & ToFD/PA – up to 8 groups simultaneously
- Compatible with a range of scanners and probes
- Up to 7 hours battery life

**Applications:**

- Phased array inspection
- TOFD inspection
- General component inspection
- Pressure vessel inspection
- Composite inspection
- Corrosion mapping inspection
- Multi group inspection



Scan to shop  
me online

**Overview:**

- Single ToFD or PA group
- 33% lighter and 50% smaller than MX2 model
- Compatible with a range of scanners and probes
- Up to 6 hours battery life

**Applications:**

- Phased array inspection
- General component inspection
- Pressure vessel inspection
- Composite inspection
- Corrosion mapping inspection
- Single group inspection



Scan to shop  
me online

**Overview:**

- 64:64 + 4 additional ToFD channels
- Conventional UT channels
- International code compliance: ASME, AWS, API, ASTM, ISO-EN
- Real-time and adaptive TFM
- Linear, Matrix and Dual arrays
- 3D imaging

**Applications:**

- Corrosion mapping
- Crack detection in welded pipes & plates
- Crack characterisation
- Phased array inspection
- TFM inspection

### Probe options

- Olympus Phased Array 2.25 MHz Probe I4 (64 Element)
- Olympus Phased Array 2MHz Probe DGS (8 Element)
- Olympus Phased Array 4MHz Probe DGS (16 Element)
- Olympus Phased Array 5MHz Probe (Near Wall, 64 Element)
- Olympus Phased Array 5MHz Probe A12 (64 Element)
- Olympus Phased Array 5MHz probe A14 (60 Element)
- Sonatest X2B 5MHz PAUT probe (32 Element)

### Wedge Packs

- **Olympus Phased Array A12 Contour Wedge Pack Kit**

*Curved Wedge S-A12-N55S AOD4*

*Curved Wedge S-A12-N55S AOD4.5*

*Curved Wedge S-A12-N55S AOD5.563*

*Curved Wedge S-A12-N55S AOD6.625*

*Curved Wedge S-A12-N55S AOD8.625*

*Curved Wedge S-A12-N55S AOD10.75*

*Curved Wedge S-A12-N55S AOD12.75*

*Carry case*

- **Olympus Phased Array Weld Inspection Kit**

*Qty 2 A12 5L64 PA probes with 5m cable*

*Qty 2 SA12 N55S Standard Wedge with Removable IHC Ring*

*Qty 1 'Y' Splitter 64/64, for Omniscan MX2*

*Carry Case*

### Software

Olympus NDT Sub-OmniPC License Key

### Water Pumps

- Olympus manual water pump
- Olympus electric water pump

### Mini Wheel Encoders

- Olympus mini wheel encoder (2.5m with D15 connector)
- Olympus mini wheel encoder (2.5m cable with LEMO connector)
- Olympus mini wheel encoder (5m with D15 connector)

### Misc.

- Olympus 5682 preamplifier for ToFD
- Olympus Omniscan indexer clicker
- Olympus Omni MX2-Y splitter (64:128)



Scan to shop  
me online

**Overview:**

- ToFD scanner
- Operates in any orientation on surfaces from 3" pipe up to flat plate
- Ideal for site use in areas with reduced access

**Applications:**

- Circumferential-pipe weld inspection
- Corrosion mapping in conjunction with HydroFORM phased array solution



Scan to shop  
me online

**Overview:**

- Quickly measure the wall thickness of elbows
- 100% elbow coverage
- Intuitive 2D C-scan imaging
- Built in encoder for scan direction
- Same probe and scanner used to cover the entire range of diameters
- Magnetic wheels
- Constant water column

**Applications:**

Corrosion mapping on pipe elbows



Scan to shop  
me online

**Overview:**

Two axes with waterproof encoders for position encoded X-Y scans

**Applications:**

- Conventional ultrasonics
- Phased array inspection
- Eddy current
- ECA



Scan to shop  
me online

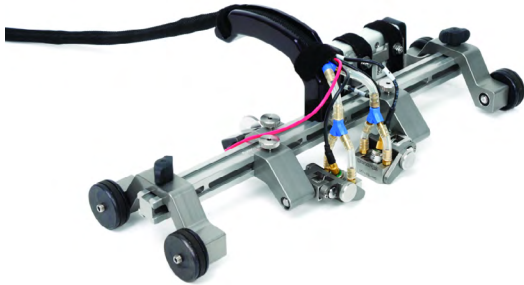
**Overview:**

- Folding frame to optimise probe contact
- Supports up to 4 probes on pipes
- Supports up to 8 probes on flat surface

**Applications:**

- ToFD inspection
- Phased array inspection





Scan to shop  
me online

Scan to shop  
me online

**Overview:**

- Circumferential scans performed with two ToFD probes on pipes 4.5 in. (114.3 mm) OD
- Light aluminium frame

**Applications:**

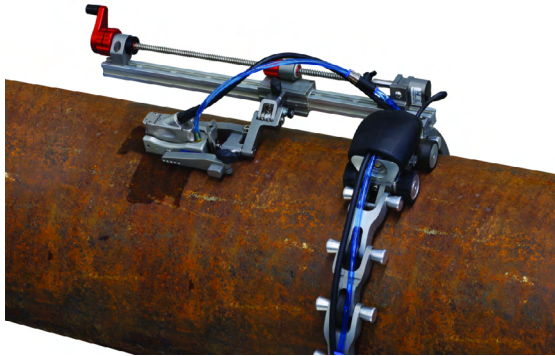
ToFD inspection

**Overview:**

- Utilises an ingenious water-column concept that eliminates the need for a wedge
- Provides excellent near-surface resolution

**Applications:**

- Phased array inspection
- Corrosion mapping



Scan to shop  
me online

**Overview:**

- Can be used on pipes of different diameters without the need for multiple curved wedges
- Compatible with the A12 and A14 probes

**Applications:**

Corrosion mapping



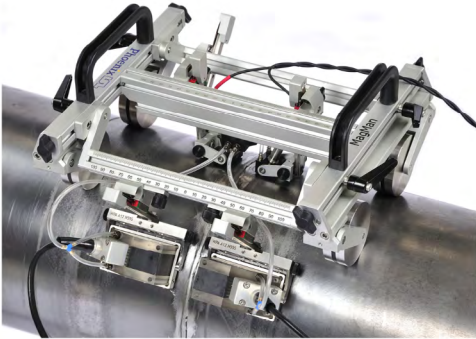
Scan to shop  
me online

**Overview:**

- Phased array ultrasonic inspection providing A, B & C-scan images
- Suitable for scanning composite and aluminium aerospace components

**Applications:**

- Phased array inspection
- Inspection of flaws
- Corrosion mapping



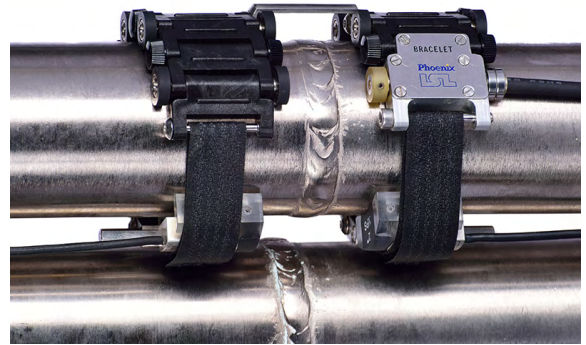
Scan to shop  
me online

#### Overview:

- Scanner kit
- Holds from 2 up to 12 probes
- Frame incorporates three measurement rules for accurate probe separation
- Probes independently sprung and gimballed
- Independent suspension on all 4 magnetic wheels for uneven surfaces
- Accurate tracking via guide chain or laser
- Spring loaded waterproof wheel encoder. IP68 rated
- Encoder Resolution: 65.6 steps/mm

#### Applications:

- Phased array inspection
- ToFD inspection
- Circumferential-pipe weld inspection
- Longitudinal-pipe weld inspection



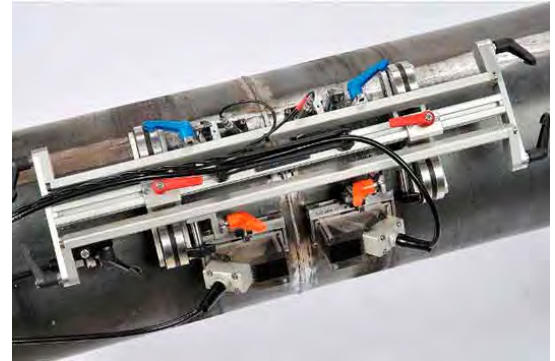
Scan to shop  
me online

#### Overview:

- Scanner kit
- Weld size from 0.5" upwards
- Single or dual probe configuration
- Easy to attach hook and loop strap to secure the scanner to the weld
- Link system allows you to easily resize the scanner to suit different pipe systems

#### Applications:

- ToFD inspection
- Phased array inspection



Scan to shop  
me online

**Overview:**

- Scanner kit
- Suited to sites with limited access
- For surfaces from 3" OD and greater
- Fully adjustable probe centre separation (PCS) from 28mm to 160mm

**Applications:**

ToFD inspection



Scan to shop  
me online

**Overview:**

- Operates in any orientation from 3" OD
- Pivoting arms to optimize probe contact
- Can support up to 4 probes
- Wheel brackets tilt to assist with misaligned welds

**Applications:**

- Phased array inspection
- ToFD inspection
- Pulse-Echo scanner



Scan to shop  
me online

#### Overview:

- Covers the important inspection area on the underside of pipes
- Up to 120° coverage in a single scan

#### Applications:

Corrosion mapping



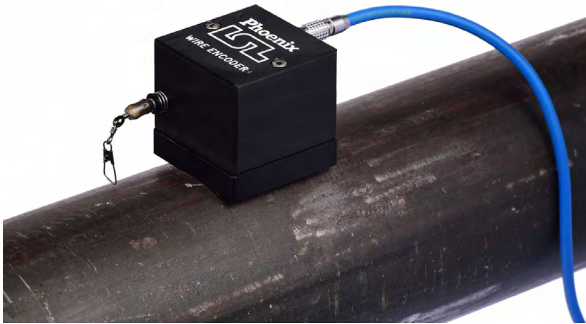
Scan to shop  
me online

#### Overview:

- Versatile pivoting wheel option for B or D scans
- Can be used with Omniscan SX (e.g for 1 channel ToFD), X3 or MX2 for multi-group inspections

#### Applications:

- ToFD inspection
- Phased array inspection



Scan to shop  
me online

#### Overview:

- Freehand scanning without constraints
- Can be used with Omniscan SX, X3 or MX2
- Optional hydroform cradle

#### Applications:

- Corrosion mapping
- Composite inspection



Scan to shop  
me online

#### Overview:

- Operates in any orientation on surfaces from 3" OD pipe up to flat plate
- Ideal for site use in areas with reduced access

#### Applications:

ToFD inspection



Scan to shop  
me online

#### Overview:

- Accuracy of 0.025 mm
- Scan-To-Mesh in seconds
- Large scanning area
- Patented technology
- Certified ISO:17025

#### Applications:

- Quality assurance
- Product development applications

**CREAFORM**



Scan to shop  
me online

#### Overview:

- Accuracy: up to 0.040 mm (0.0016 in)
- Measurement resolution: 0.100 mm (0.0039 in)
- Light source: 7 red laser crosses

#### Applications:

- Quality assurance
- Product development applications

**CREAFORM**



## ACFM

Topside ACFM inspection systems to accurately and reliably identify and measure size fatigue cracks in components, welds, vessels and turbines.

### Scan here

with your phone camera to view the ACFM range online



## TSC PACE ACFM system



Scan to shop me online

### Overview:

- Reliable, repeatable crack detection using ACFM®
- Accurate defect sizing, length and depth
- Inspection through coatings, no cleaning required
- No in-situ calibration required

### Applications:

Surface crack detection







## Tank inspection

Tank floor scanners, ultrasonic crawler systems and vacuum boxes to support with maintenance and inspection programs for tanks, vessels & pipelines.

### Scan here

with your phone camera to view the tank floor scanner range online



## Silverwing Floormap 3DiM



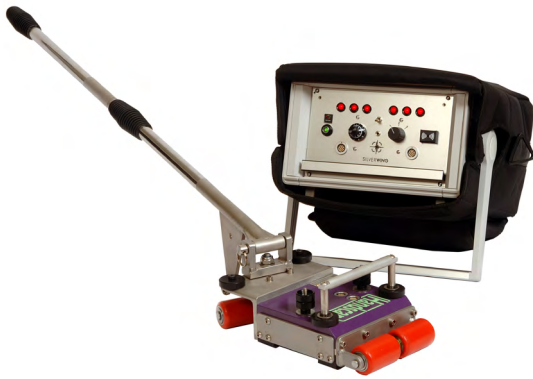
Scan to shop me online

### Overview:

- Tank floor scanner
- Automated corrosion mapping system for tank floor inspections
- Scanning speeds up to 0.5m/s: cover large areas without compromising inspection result
- Technology: Magnetic Flux Leakage (MFL) & Surface Topology Air-Gap Reluctance Sensor (STARS)

### Applications:

Corrosion mapping of tank floors



Scan to shop  
me online

**Overview:**

- Technology: Magnetic Flux Leakage (MFL)
- Increased POD: highly accurate MFL scanning head

**Applications:**

- Tank floor inspection
- Inaccessible areas and small tanks



Scan to shop  
me online

**Overview:**

- Ultrasonic crawler & Swift UT
- Complete UT crawler system
- Full A-scan capture
- High resolution B-scan image
- Full recording of waveform up to 50m distance
- Simple profile, or full amplitude display

**Applications:**

- Ultrasonic inspection on ferro-magnetic structures
- Storage tanks, vessels and offshore installations



Scan to shop  
me online

#### Overview:

- LED dual vacuum box
- Hose to connect to vacuum pump (10m)
- Hose to connect to air compressor (10m)
- Battery and charger
- Weld Inspection Length: 750mm
- Vacuum rating: 20inch Hg
- Integrated LED: increases POD by illuminating the weld from multiple sources

#### Applications:

For weld inspections of tank floor welds



Scan to shop  
me online

#### Overview:

- Dual vacuum box
- Hose to connect to vacuum pump (10m)
- Hose to connect to air compressor (10m)
- Battery and charger
- Weld Inspection Length: 400mm
- Vacuum rating: 20 inHg
- Improved initial vacuum

#### Applications:

For weld inspections of floor to tank shell welds



Scan to shop  
me online

**Overview:**

- 110V electric vacuum pump

**Applications:**

To connect to vacuum boxes



## Eddy current

Flaw detectors, scanners and probes available to support with surface, wheel and weld inspections, and conductivity and coating thickness measurements.

### Scan here

with your phone camera to view the eddy current range online





Scan to shop  
me online

#### Overview:

- Pulsed Eddy Current (PEC) Solution: fast and cost-effective method for inspecting Corrosion Under Insulation (CUI)
- Scans through a number of materials: thick metal and insulation, aluminium, stainless steel and galvanized steel weather jackets
- Multiple probe / accessory options: Standard small, medium & large probes + Splash Zone Probe

#### Applications:

Inspecting corrosion under insulation



Scan to shop  
me online

#### Overview:

- Light, rugged, portable, and sealed
- SmartMUX™: integrated, universal, and programmable ECA multiplexer for up to 256 channels
- Multi-technology for tube inspections: ECT, RFT, NFT, MFL, and array equivalents, and IRIS ultrasound technology
- Battery power and backup

#### Applications:

- Corrosion detection
- Crack detection
- Welds
- Turbines
- Castings



Scan to shop  
me online

**Overview:**

- Eddy current flaw detector
- Lightweight & compact, suitable for rope access applications
- Compatible with a range of probes

**Applications:**

- Flaw detection
- Offshore
- Rope access



Scan to shop  
me online

**Overview:**

- Interface with application selection pre-sets
- Long battery life (up to 10 hours)
- Bright, 5.7 inch (14,5 cm) VGA display

**Applications:**

- Surface inspection
- Wheel inspection
- Conductivity and coating thickness measurement
- Weld inspection



## Flaw detection

Ultrasonic flaw detectors to support with a range of applications including weld fabrication, corrosion detection, composite inspection, bond testing, forging, casting, and more.

### Scan here

with your phone camera to view the flaw detection range online



## Sonatest WAVE



Scan to shop me online

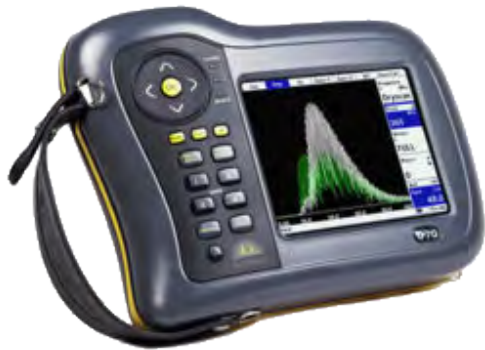
### Overview:

- Interactive scan plan
- WiFi capable
- WAVE companion software
- 0/45/60/70 degree angle probes
- 1500 PRF transmitter
- 0.2 – 20MHz bandwidth
- Up to 10 hour battery life

### Applications:

- Weld fabrication & corrosion detection
- Composite inspection
- Bond testing
- Forgings & castings
- Power generation





Scan to shop  
me online

**Overview:**

- 1 mm (0.4in) to 20,000mm (787 in) test range
- Configurable menu system
- Advanced defect sizing tools
- Encoded B-scan
- UT-Lity data management software
- Colour transfective VGA display
- Up to 18 hour battery life
- IP67 rating

**Applications:**

- Weld fabrication
- Corrosion detection
- Forgings and castings
- UT inspection



Scan to shop  
me online

**Overview:**

- 1 mm (0.4in) to 10,000mm (395 in) test range
- Configurable menu system
- Advanced defect sizing tools
- Encoded B-scan
- UT-Lity Lite data management software
- Colour transfective VGA display
- Up to 18 hour battery life
- IP67 rating

**Applications:**

- Weld fabrication
- Corrosion detection
- Forgings and castings
- UT inspection







Scan to shop  
me online

**Overview:**

- Eight digital filters for enhanced signal-to-noise ratio
- Up to 13 hours battery life

**Applications:**

- Welds
- Forgings
- Billets
- Axles
- Shafts
- Tanks
- Pressure vessels
- Turbines
- Structural components



Scan to shop  
me online

**Overview:**

- 800 x 480 pixel display, which is better resolution than a standard DVD
- Small size, lightweight, robust, dust and waterproof construction
- Backwall Echo Attenuator (BEA)
- Automatic gate threshold for the 2 gates
- Video recording up to 8 minutes allows live reporting

**Applications:**

- Weld inspection
- Forgings
- Castings
- Composite inspections



Scan to shop  
me online

**Overview:**

- Large 7 inch screen, with an 800x480 resolution
- Signals easily viewed
- Uses the familiar rotary knobs

**Applications:**

- Weld inspection
- Precise thickness measurement
- Corrosion measurement
- Inspection of forgings
- Inspection of special materials



**Thickness  
measurement**

Ultrasonic thickness gauges to be used on various materials such as metals, plastics, composites, fibre-glass, ceramics and glass to support a number of applications.

**Scan here**

with your phone camera  
to view the thickness  
measurement range  
online





Scan to shop  
me online

#### Overview:

- Thickness range: 0.08 mm to 635 mm
- Compatible with a full line of dual and single element transducers
- Thickness, velocity, and time-of-flight measurements

#### Applications:

- Thickness measurement
- Wall thinning measurement



Scan to shop  
me online

#### Overview:

- Intrinsically safe
- 3 modes for through-coat measurements, corrosion and various materials
- Manual Measurement Mode to configure gates and gain to your application
- High temperature capability
- Manual Gates A, A+B, Manual Gain
- Live A and B scans
- Deep Coat function
- Thickness range: 0.8 mm to 250 mm depending on selected probe and configuration

#### Applications:

- Thickness measurement
- Wall thinning measurement
- Hazardous environments



Scan to shop  
me online

**Overview:**

- Intrinsically safe
- For use in a hazardous atmosphere - Ex II 1 G EEx ia IIC T6
- Thickness range: 1 – 300mm

**Applications:**

- Chemical plants
- Petroleum or chemical storage tanks
- Oil and gas production facilities
- Dry, dusty environments
- LPG vessels and road transport tankers
- Grain processing plants and fuel depots
- Processing vessels
- Structures and facilities in mines



Scan to shop  
me online

**Overview:**

- Deep-coat mode for coatings up to 20 mm thick
- Thickness range: 1 – 300mm
- Light, rugged, small and shock-proof

**Applications:**

Thickness testing in the harshest environments





Scan to shop  
me online

**Overview:**

- Multiple-echo single crystal probe
- Measures through coatings up to 20mm thick
- OLED multi functional display  
IP67 rating

**Applications:**

- Ship surveys
- Coated metals
- Structural integrity inspection



Scan to shop  
me online

**Overview:**

- Watertight and pressure tested to 300m depth
- Thickness range: 3mm to 250mm
- Remote probe for measuring awkward locations

**Applications:**

- Ships hulls
- Semi sub structures
- Subsea pipelines
- Offshore structures, jackets
- Storage vessels, FPSO
- Dock gates, piers, jetties and pipings





Scan to shop me online

**Overview:**

- 300m depth rated
- Wrist-mountable, giving the diver a free hand
- A-Scan (selectable)
- Data logging; stores 5,000 measurements and A-Scans
- Auto-Log; no log button to press
- AMOLED display, easy viewing from all angles for diver and camera
- Multiple-Echo, error- checked measurements through coatings up to 20 mm thick

**Applications:**

Underwater thickness measurements



Scan to shop me online

**Overview:**

- Perform thickness measurements and corrosion surveys from your iPhone via the ARTIO app
- Fully wireless controlled
- Lightning fast A-scan
- High resolution B-scan
- Embedded database
- Share data instantly
- Lightweight at less than 200g
- Battery: 4 hours constant usage
- Compatible with iOS 13.5 or greater.

**Applications:**

- Thickness measurements
- Corrosion surveys
- Tight areas
- Rope access
- Mount on drones or robots for remote access





## Hardness testing, coating, paint and ferrite inspection

Highly accurate hardness testers, thickness meters, rebar detectors and feritoscopes with a wide measurement range to inspect a range of assets.

### Scan here

with your phone camera to view the hardness testing range online



## Proceq Equotip 550 Hardness Tester



Scan to shop me online

### Overview:

- Leeb hardness tester
- Automatic conversions to all common hardness scales (HV, HB, HRC, HRB, HRA, HS, Rm) as required
- Comes with probe type D
- Optional probes: type DL and type G
- Highly accurate  $\pm 4$  HL (0.5% at 800 HL) with automatic correction for impact directions
- Wide measurement range with a variety of impact devices and support rings

### Applications:

- Flanges
- Engine blocks, shafts and gears
- Cast objects, landing gears, rolls, coils
- Bars / pipes and heat treatment / castings

**proceq**

[www.ashtead-technology.com](http://www.ashtead-technology.com)



Scan to shop  
me online

#### Overview:

- Rebar detector
- Visual indication of rebars in close proximity
- Identifies the mid-point between rebars as well as the orientation of rebars

#### Applications:

- Measurement of concrete cover
- Measurement of rebar diameter
- Checking for minimum cover
- Map out the rebar grid and cover for corrosion studies (with Canin+)
- Rebar grid examination for planned load changes on the structure

proceq



Scan to shop  
me online

#### Overview:

- Concrete hardness tester
- Automatic calculation of rebound value according to international standards
- Best in class correlation with least dispersion for specific concrete mixes
- Extremely durable with long service intervals when compared with classical hammer

#### Applications:

- Concrete
- Uniformity testing
- In-situ strength estimation
- Custom correlation to compressive strength

proceq





Scan to shop  
me online

#### Overview:

- Feritscope
- Range: 0.1 to 100FN or 0.1 to 80% Fe in austenitic and duplex steel
- Simple measurement

#### Applications:

- Measuring ferrite in duplex steel
- Measures ferrite parts found in chemical, utility and other processing plants that are often exposed to heat, aggressive media and high pressure



Scan to shop  
me online

#### Overview:

- Holiday detector
- Checks coating thicknesses of between 60 microns to 26mm
- Quick, accurate and effective inspections of porosity, pinholes and other faults in a wide range of non-conductive coatings and linings

#### Applications:

- Petro-chemical
- Aerospace
- Pipeline construction
- Plastic fabrication





Scan to shop  
me online

**Overview:**

- Holiday detector
- Checks coating thicknesses of between 20 microns to 6.5mm
- Quick, accurate and effective inspections of porosity, pinholes and other faults in a wide range of non-conductive coatings and linings

**Applications:**

- Petro-chemical
- Aerospace
- Pipeline construction
- Plastic fabrication



Scan to shop  
me online

**Overview:**

- Paint thickness meter
- Thickness gauge for varnish, paint & electroplated coatings
- Measuring range: up to 3500 µm /140 mils
- Up to 60 hours battery life

**Applications:**

- Paintshops and for electroplaters
- Wet and powder coating operations
- Automobile/automobile parts industry
- Incoming material inspection
- Development engineering and expert assessment
- Laboratory and field operations



## Positive material identification

PMI / XRF analysers to support with accurate measurement and quick identification of elemental composition.

Scan here

with your phone camera to view the PMI range online



## Niton XL2 GOLDD Plus XRF Analyser



Scan to shop me online

### Overview:

- Modes for: general metals, precious metals, coatings, soil, mining, electronic alloys, lead in paint products, industrial lead in paint, and plastics
- 2W/6-45 kV x-ray tube
- USB and Bluetooth communications
- Large area drift detector

### Applications:

- Precious metals analysis
- Positive material identification (PMI)
- Quality assurance testing
- Ore grade control
- Scrap metal sorting
- Mine mapping
- Lead in paint
- Coating thickness measurements

**Thermo**  
SCIENTIFIC

[www.ashtead-technology.com](http://www.ashtead-technology.com)



Scan to shop  
me online

**Overview:**

- Modes for: metal alloy, electronics alloy, precious metals, mining, soil and plastics
- 45 kV miniaturized x-ray tube
- USB and Bluetooth communications
- Large area drift detector

**Applications:**

- Precious metals analysis
- Positive material identification (PMI)
- Ore grade control
- Scrap metal sorting
- Mine mapping
- Lead in paint



Scan to shop  
me online

**Overview:**

- Modes for: general metals, precious metals, soil, mining, lead in paint, AUTO CAT, plastics and electronics
- High count rate for lower detection limits and faster analysis
- Point and shoot simplicity

**Applications:**

- Precious metals analysis
- Positive material identification (PMI)
- Ore grade control
- Exploration
- Scrap metal sorting
- Mine mapping

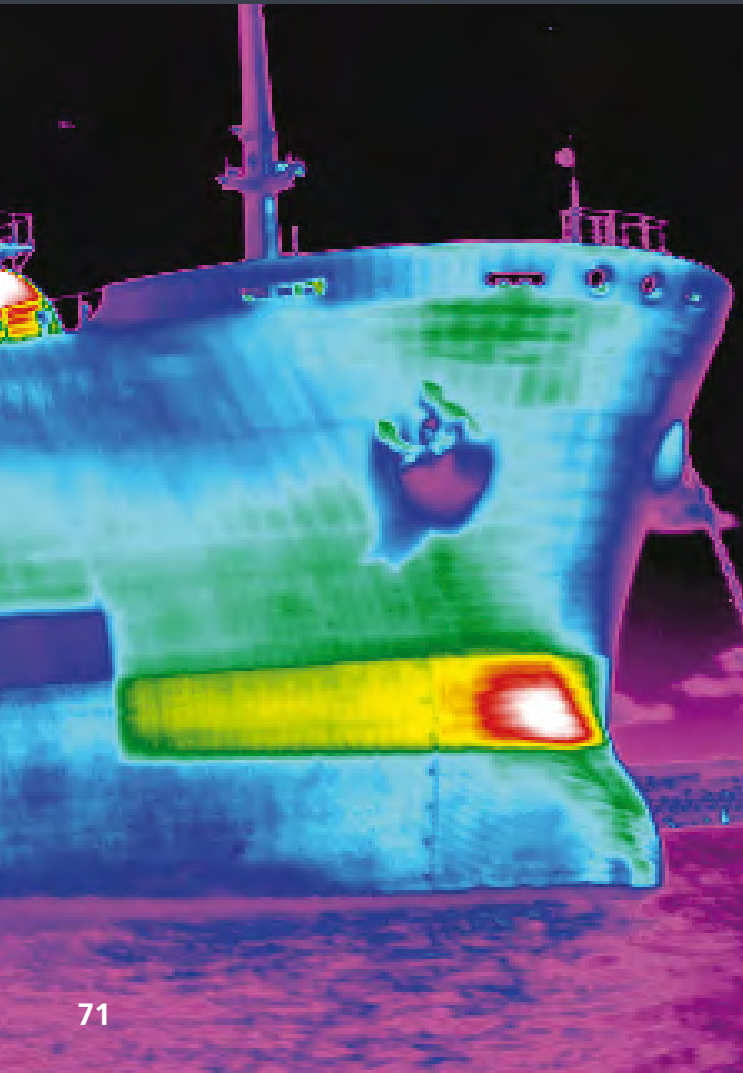


## Thermal inspection

Highly accurate and time effective thermal imaging to identify internal defects in composites and bridge deck deterioration inspections.

### Scan here

with your phone camera to view the thermal inspection range online



## FLIR P620 thermal camera



Scan to shop me online

### Overview:

- High resolution thermal images
- Extraordinary thermal sensitivity: 0.06oC
- Eyepiece viewfinder and LCD screen to suit working conditions
- Large 14cm LCD screen
- Laser locator and visual target illuminator

### Applications:

- Condition monitoring
- Veterinary thermal imaging
- Night vision
- Process control
- Building inspection
- Electrical testing



## Magnetic particle inspection

Magnetic particle inspection equipment to identify fatigue cracking, seams, laps, tears and more.



Scan here

with your phone camera  
to view the MPI range  
online



## Magnaflux Y8 6V DC MPI Yoke



Scan to shop  
me online

### Overview:

- Used for the detection of near surface defects in any ferro-magnetic material
- Articulated legs with 25 x 25 mm pole area
- Battery powered
- 240v mains charger

### Applications:

- Detecting defects
- Inclusions, seams, tears, laps, welding slag, grinding cracks and quenching cracks





Scan to shop  
me online

**Overview:**

- AC Magnetic Field
- Detachable Cable
- Rugged and reliable
- Super lightweight (approx 2.2 kgs)
- Dual length articulated legs
- Comfort grip handle
- Can be used as a 110v powered AC Electromagnet AND/OR as an AC Battery powered yoke
- 240v mains charger

**Applications:**

Magnetic particle inspection



Scan to shop  
me online

**Overview:**

- UV & white light meter kit
- Excellent accuracy
- Dual sensor
- Interchangeable sensor allows the LumaCheck to operate continuously
- Lightweight and compact
- Battery operated
- Ergonomically designed with protective rubber boot

**Applications:**

Magnetic particle inspection



Scan to shop  
me online

**Overview:**

- Combined dual UV / white light meter and tangential Field Strength Meter
- Excellent accuracy and results in all measurement modes
- Lightweight, compact and housed in a rugged enclosure
- Battery powered

**Applications:**

Magnetic particle inspection



Scan to shop  
me online

**Overview:**

- LED Operation, with long operating life
- Light weight and compact
- Switch between ultraviolet and white light
- Meets UV and white light inspection criteria for NDT applications
- Battery powered
- 240v mains charger

**Applications:**

- Magnetic particle inspections
- Dye penetrant inspections
- Fluorescent DPI/MPI inspection





Scan to shop  
me online

**Overview:**

- Small, light and powerful for quick inspections
- Generates an intensity of approximately 25 000  $\mu\text{w}/\text{cm}^2$ , 10 000  $\mu\text{w}/\text{cm}^2$  and 3 000  $\mu\text{w}/\text{cm}^2$  respectively at 38 cm (15 inches)
- The battery life is 4.5 hours

**Applications:**

- Quick NDT inspections
- Fluorescent DPI/MPI inspection



Scan to shop  
me online

**Overview:**

- Suitable as both a magnetising and demagnetising coil
- Practical 260mm internal aperture make the MC260 suitable for many general engineering applications

**Applications:**

NDT processes requiring strong magnetic fields



**Below are some frequently asked questions for the ordering and delivery of equipment.**

If you have any additional questions, please contact our team by phoning +44 (0)1462 679 020 or by emailing [london@ashtead-technology.com](mailto:london@ashtead-technology.com)

**Do you offer a delivery service?**

Yes! We offer timed services to most locations within the UK. We can also provide a same-day service if required.

**Do you offer a collection service?**

Yes, if you are in the UK you can collect! Just contact us on the day the collection is required before 11:30am and we will arrange it.

**Can you ship to Europe?**

Yes! Just contact us with the delivery address and we can confirm the services available.

**Do you offer protection for damage or loss?**

Yes! Our Damage Loss Waiver (DLW) program is available which reduces your liability in the event of damage or loss.

**Can you provide technical support?**

Yes! Our dedicated technical team can provide equipment support.

**Where can I see all of your equipment?**

Please visit [www.ashtead-technology.com](http://www.ashtead-technology.com) to browse the non-destructive testing, remote visual inspection and subsea equipment range.

Or visit [www.enviro.ashtead-technology.com](http://www.enviro.ashtead-technology.com) to browse the environmental, health & safety equipment range.

**What are the payment options?**

You can pay using credit/debit card or by setting up a credit account (NB it can take up to 3 working days to set up a credit account).

**How quickly can I get equipment?**

Usually next day, but it depends on availability. Please contact us for any urgent enquiries by calling +44 (0)1462 679 020 or by emailing [london@ashtead-technology.com](mailto:london@ashtead-technology.com)