

# PLASTIC BOX SALES

t: +44 (0) 1676 925000

e: [sales@plasticboxsales.co.uk](mailto:sales@plasticboxsales.co.uk)

## Attached Lidded Crates Range

## New & Pre Owned

Offer Improved security, smoother conveyor flow and many innovative identification and handling features

### Performance

Stacks 7 high carrying 25kg unit load and nests to 70% when empty

### Security

Tamper evident security seals deter theft

### 05 Identification

Ticket Window, textured areas (for removal of adhesive labels without leaving a sticky residue) recesses for permanent labels

### Branding (New)

Large print area on both long sides. Smaller print area inside the lid provides visible identification when containers are nested



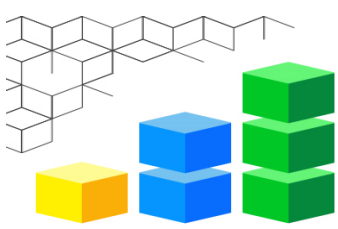
### Heavy Duty Base

Providing added strength for heavier loads



[www.PlasticBoxSales.co.uk](http://www.PlasticBoxSales.co.uk)



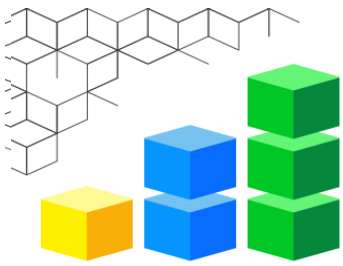


## Attached Lidded Crates Range – Pre Owned

	sku No	DIMS			Plt Qty
	u64265alc	Ex40 600x400x260 Int: 515 x 343 x 215	Vol Wt	40 L 2.9 kg	
	u64300alc	Ext: 600x400 x300 Int: 508x338x285	Vol Wt	54 L 3.2 kg	60
	u64350alc	Ext: 600x400x350 Int: 501x328x330	Vol Wt	64 L 3.38kg	60
	U64400alc	Ext: 600x400x400 Int: 501x328x330	Vol Wt	64 L 3.38kg	60
	u710.480.368alc	Ext: 710x480x400 Int: 597x374x370	Vol Wt	80 L 4 kg	60
					

[www.PlasticBoxSales.co.uk](http://www.PlasticBoxSales.co.uk)





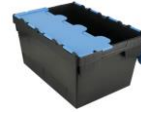
# PLASTIC BOX SALES

t: +44 (0) 1676 925000  
e: sales@plasticboxsales.co.uk

400x300x300H  
28 Ltr



**Black**  
N43300alc Blk



**Black/Blue Lid**  
N43300alc Blk/Blu



**Blue**  
N43300alc Blu

600x400x250H  
43 Ltr



**Black**  
N64250alc Blk



**Black/Blue Lid**  
N64250alc Blk/Blu



**Blue**  
N64250alc Blu

600x400x300H  
55 Ltr



**Black**  
N64300alc Blk



**Black/Blue Lid**  
N64300alc Blk/Blu



**Blue**  
N64300alc Blu

600x400x370H  
70 Ltr



**Black**  
N64370alc Blk



**Black/Blue Lid**  
N64370alc Blk/Blu



**Black/Grn Lid**  
N64370alc  
Blk/Grn

600x400x370H  
70 Ltr



**Black/Red Lid**  
N64370alc Blk/Red



**Black/Ylw Lid**  
N64370alc  
Blk/Ylw

Large range:

Attached Lidded Crates, Tote Boxes, 400x300, 600x400mm – Stackable and Nestable  
Used in Industrial applications- storage, Mechanical Handling, Moving and Retail Distribution.

Check out our dollies for the movement of the crates.

[www.PlasticBoxSales.co.uk](http://www.PlasticBoxSales.co.uk)

