

QUADRAT

General Information

Quadrat is a range of relay and accessory PCB's specifically designed to enhance or modify the operation and facilities offered with a standard power supply unit.

They can also be used in stand-alone format to add additional functionality to access control and door entry systems. The majority can be housed in their own box or incorporated into the SL2 PSU housing.

Safelink's 70 x 70mm and 70 x 145mm pcb's have been specifically designed to be accommodated in the Safelink range of moulded housings. For example:

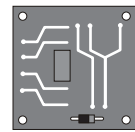
- 70 x 70mm pcb's will fit in the SLPB3 housing or 2 x 70 x 70mm pcb's will fit in the SLPB4 housing.
- 70 x 145mm pcb's will fit into the SLPB4 housing.
- 1 no. 70 x 145mm or 2 no. 70 x 70mm pcb's can be housed in the SL2 housing along with the power supply unit.

Product ref
Dimensions
Voltage
Description

R01 - 4 Pole Relay

70 x 70mm
12v AC/DC

A 4 pole relay actuated by 12v AC or DC giving 4 N/O contacts & 4 N/C contacts to a command for each pole. 12v AC or DC for interfacing door entry systems and where load necessitates, switching operating voltages local to unit. Clean changeover contacts.



Product ref
Dimensions
Voltage
Description

R02 - Single Pole Relay + Isolated Trigger

70 x 35mm
12v AC/DC

A single pole relay with opto-isolator to facilitate switching between 5v and 35v at 50mA, with 6 amp changeover contacts.



Product ref
Dimensions
Voltage
Description

R03 - 24v AC/DC Relay

48 x 18mm
24 AC/DC

Single pole relay activated by 24vAC/DC with suppressed coil and contacts. This unit can be used to interface AC door entry systems with DC release mechanisms, other access systems, gate or barrier mechanisms etc...

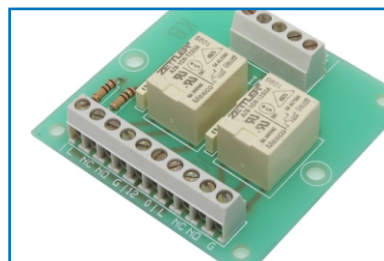
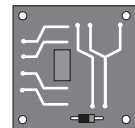


Product ref
Dimensions
Voltage
Description

R04 - 12v AC/DC Relay

70 x 70mm
12v AC/DC

Single pole relay activated by 12vAC/DC with suppressed coil and contacts. This unit can be used to interface AC door entry systems with DC release mechanisms, other access systems, gate or barrier mechanisms etc...



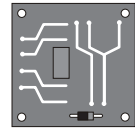
QUADRAT

Product ref
Dimensions
Voltage
Description

R05 - 2 x Single Pole Relay

70 x 70mm
12v DC

PCB mounted 2 x single pole relay board with separately switched coils and a common input voltage to switching contact giving voltage output to the relays. Each relay can be isolated to give clean contacts or alternating voltage.

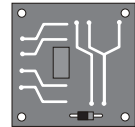


Product ref
Dimensions
Voltage
Description

R06 - 7 Pole Changeover Relay

70 x 70mm
12v AC/DC

As R01 but with 7 pole changeover. This device also has outputs for status i.e. ON or OFF.



Product ref
Dimensions
Voltage
Description

R07 - Single Pole AC/DC Relay

50 x 18mm
12v AC/DC

A 12v AC/DC relay with changeover contacts @ 1.5amps. Small enough to be mounted inside entrance panels to facilitate maglocks or other low current devices.



Product ref
Dimensions
Voltage
Description

R08 - 2 Pole AC/DC Relay

50 x 18mm
12v AC/DC

12v AC/DC 2 pole changeover relay. Contact rating 1amp. Suitable for simultaneous signalling. i.e. bell and telephone.

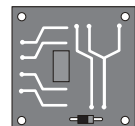


Product ref
Dimensions
Voltage
Description

R09A - 2 Door Switching Unit

70 x 70mm
12v AC/DC

This unit is designed to transfer speech and door release functions on a 4 pole changeover from door A to door B. The changeover is actuated by the call button on the door panel. The units can be cascaded for larger multi-door applications. The operational door will be the last door called externally. This unit is compatible with a number of different manufacturers products.

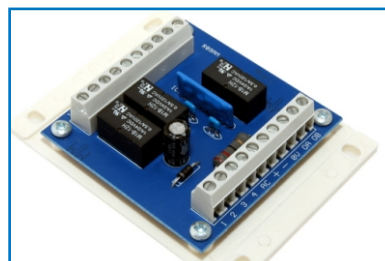
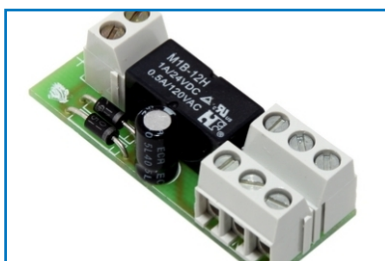
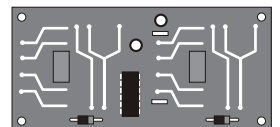


Product ref
Dimensions
Voltage
Description

R09B - 2 Door Switching Unit with Changeover Contacts

70 x 145mm
12v AC/DC

This unit is designed to transfer speech and door release functions on an 8 pole changeover from door A to door B plus video functions. The changeover is actuated by the call button on the door panel. The units can be cascaded for larger multi-door applications. The operational door will be the last door called externally. This unit is compatible with a number of different manufacturers products.



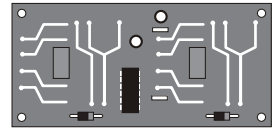
QUADRAT

Product ref
Dimensions
Voltage
Description

R09BI - Door Entry / Intercom Relay (1 door + Intercom)

70 x 145mm
12v AC/DC

This unit is designed to interface a door entry system with an internal intercom system, utilising the same door entry handsets. The device will mute speech to the front door whilst the intercom is in operation.

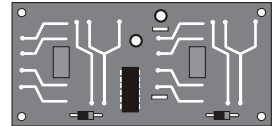


Product ref
Dimensions
Voltage
Description

R09C - 3 Door Switching Unit

70 x 145mm
12v AC/DC

Designed to transfer speech and door release functions from door A to door B and to door C. The changeover is actuated by the call button on the door panel. These devices can be cascaded together for larger multi-door applications. The operational door will be the last door called externally. This unit is compatible with a number of different manufacturers products.

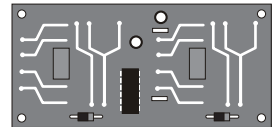


Product ref
Dimensions
Voltage
Description

R09CI - Door Entry / Intercom Relay (2 doors + Intercom)

70 x 145mm
12v AC/DC

This unit is designed to transfer speech and door release functions from door A to door B and to interface with an internal intercom system utilising the same door entry handsets. The operational door will be the last door called externally but the unit will mute speech to the door whilst the intercom is in operation.

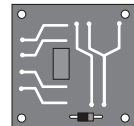


Product ref
Dimensions
Voltage
Description

R10 - 2 Door Interlock - Failsecure

70 x 70mm
12v DC

This unit is designed to make the installation of security door (airlock style) systems simple and economical. This device ensures that one door is closed before another door can be released. Can be used in conjunction with monitored releases or alternatively standard un-monitored releases and door contacts.

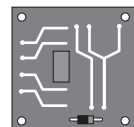


Product ref
Dimensions
Voltage
Description

R11 - Firebreak Relay

70 x 70mm
12v DC

Switching signal for this device is either 24vDC or N/O pair. This device has a contact rating of 6amp amp to switch door release load with 12vDC output or clean contacts. Designed for use on Fire Exit doors where security is also of importance. It enables release of locking devices from the fire alarm signal but will be reset separately from the fire alarm system via a separate device (e.g. SAK2), thus avoiding accidental reset during an emergency.



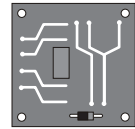
QUADRAT

Product ref
Dimensions
Voltage
Description

R12 - 2 Door Interlock - Failsecure

70 x 70mm
12v DC

This unit is designed to make the installation of security door (airlock style) systems simple and economical. This device ensures that one door is closed before another door can be released. Can be used in conjunction with monitored releases or alternatively standard un-monitored releases and door contacts.

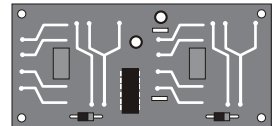


Product ref
Dimensions
Voltage
Description

R13/C - 4 Door Interlock - cascade version.

70 x 145mm
12v DC

The R13/C is an updated version of the older R/13. This unit can be cascaded thereby giving the ability to interlock numerous doors. Runs on 12v DC with changeover contacts, giving 12v output, rated at 6amp, with volt free output to monitor system. Can be triggered from a NO or NC source. This unit is designed to make the installation of multi- door, failsafe or failsecure, security interlock (airlock style) systems simple and economical. Use of this unit ensures that one door has to be closed before another door in the system can be released. Can be used in conjunction with monitored release or alternatively, standard door releases and door contacts. This relay can accommodate a mixture of failsafe and failsecure release devices.



Product ref
Dimensions
Voltage
Description

R14 - Pulse Relay

70 x 35mm
12v DC

The relay accepts a momentary trigger from one source which will change the state of contacts i.e. open to closed / closed to open. Useful for example for gate control – one push to open, second push to close.

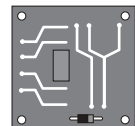


Product ref
Dimensions
Voltage
Description

R15 - 4 Chanel Stepping Relay

70 x 70mm
12v DC

A three channel indicator control board activated by a momentary pulse to change state of output. Only one channel active at a time. e.g. as used in Engaged, Wait, Enter system (IP3).

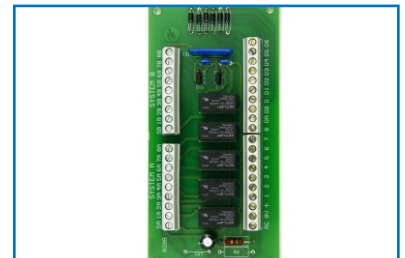
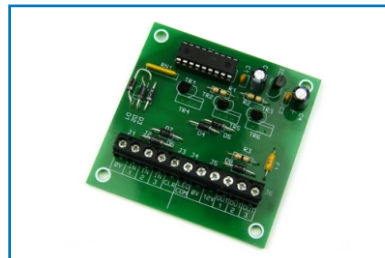
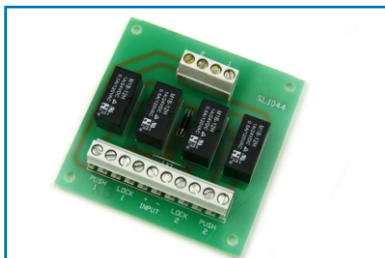
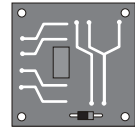


Product ref
Dimensions
Voltage
Description

R16 - 6 Channel Timed Control Board

70 x 70mm
12v DC

On this 6 channel indicator control board all channels can be activated from a momentary input. One input required per channel. Has the option of flashing display with 4 separate flash rates.



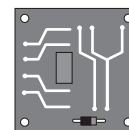
QUADRAT

Product ref
Dimensions
Voltage
Description

T01 - Single Shot Timer

70 x 70mm
12v AC/DC

Requires a momentary trigger from N/O contacts or a voltage source. It has a relay output with voltage or clean contacts by cutting link. Operates on 12vAC/DC with a timed output for lock release, lights, sounder etc. which is adjustable from 4-40 seconds. Longer period devices are available to special order.

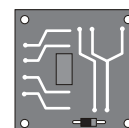


Product ref
Dimensions
Voltage
Description

T02 - Delay Timer

70 x 70mm
12v AC/DC

The output is activated by N/O or N/C contacts after a period of delay. Ideal for door monitoring applications or similar. It has a relay output with voltage or clean contacts by cutting link. Operates on 12vAC/DC with a delay period adjustable from 4-40 seconds. Longer period devices available to special order.

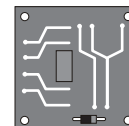


Product ref
Dimensions
Voltage
Description

T03 - Intermittent Timer

70 x 70mm
12v AC/DC

This timer will give an intermittent output when triggered from N/O contacts. It has a relay output with voltage or clean contacts option by cutting link. Operates on 12vAC/DC. Can be used, for example, on a warning system where time may be required for reset. Duration time 3-30 seconds on/off.



Product ref
Dimensions
Voltage
Description

T04 - Multifunction Timer

70 x 70mm
12v AC/DC

This unique device can be triggered from a N/O or N/C volt free contact to offer either a delayed output, a momentary trigger facility, a minimum period or an extended period switching, making it suitable for a wide range of electronic timer applications. Time periods can be set from 1 second to 10 hours. 10-14vAC/DC input @ 70mA with a 1amp max VFC output.

