

Who's looking out for you?



GUARDIAN
STAFF SAFETY SYSTEMS

Increasing hostility encountered in workplace environments places employees at risk and affects staff morale.

Protect your staff with Guardian, the ultimate in personal security systems.

the ultimate in personal security

for staff at risk in the workplace

The Guardian Personal Activation Device is worn on the belt by each member of staff. The system has two levels of call “assistance” and “attack”.

In the event of an “attack” the unit is tugged from the retaining clip, sending out continuous attack signals to Receiver Units located throughout the area covered by the system. These units transmit to Attack Display Units which sound the alarm and identify the exact location of the incident and the personnel involved in full alphanumeric text.

discreet

The personal activators are discreet, easy to use and have two levels of call – “assistance” and “attack”. This enables the system to be used as an attack alarm and also by staff to summon assistance at a touch of a button without having to leave the scene of the incident.

safety

Guardian is easy to use by design with no buttons to press in an emergency and instant transmission of the unique signal. Key staff members can be assigned with radio pagers to alert them of incident locations and the level of assistance required. Resetting the system can also be carried out by key personnel with a trigger, in the area the call was initiated or by a key switch at Attack Display Units.

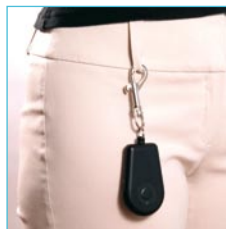
Guardian registers and cancels each signal individually and displays multiple calls in the order they are received, with an attack signal overriding all assist calls until it has been dealt with.

Every workplace is different and Guardian is easily adapted to your environment. Options, such as the silent mode to prevent alarms aggravating critical situations, or zoning in areas so that only local incidents are displayed, enables Guardian to work with you and in your best interests.

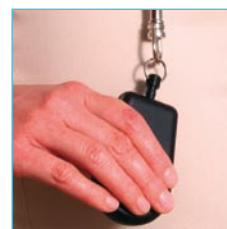
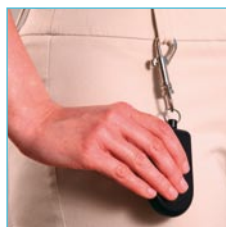
The system can be easily expanded to cover additional internal and external areas and can be upgraded in line with your requirements at any time. By installing the Guardian system you can provide peace of mind for your staff enabling them to continue with their duties in a secure environment.

how it works

The Guardian Transmitter is worn on the belt by each member of staff



In the event of an attack, the unit is pulled in a downward motion



This transmits a continuous attack signal to Receiver units located around the building

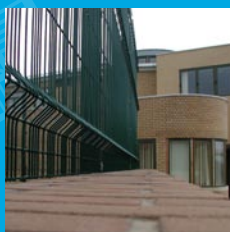
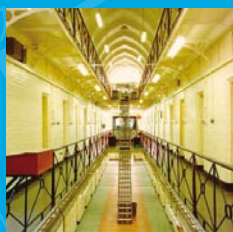


reliable

Any attack system has to be totally reliable to ensure your staff have complete confidence in the protection you are providing. Guardian utilises a combination of advanced Infra Red and Radio Technology, ensuring that whatever your staffs location, either inside the building or outside in a car park, courtyard or garden, their call will be received.

For added reliability, the system has a built-in “call follower” feature. Once an attack call has been made, the personal activator will continue to transmit “attack” signals which are picked up by the nearest receiver unit. If the incident moves to another part of the building, the latest location will be tracked by the system and will show on the display ensuring that help will go to the right place.

The system has been designed to be as unobtrusive as possible and incorporates a “tamper” facility which will raise a call if a unit is tampered with. For added peace of mind, an optional LED flashes to indicate the system is fully operational.



system features

two wire installation	simple to install and expand
“assistance” call level	summons assistance in a non-critical situation
“attack” call level	in the event of an attack, alerts key staff members
dual technology triggers	utilises both infa red and radio technology providing reliable coverage in both internal and external areas
“call follower” feature	tracks the signal transmitted from the trigger giving its latest location
full alphanumeric text	gives instantly readable incident location in full English text
caller ID	identifies staff member requiring assistance
external coverage	outside areas such as car parks and gardens can be covered by radio receivers
durable, rugged trigger case	hard wearing, will withstand constant use
system integration	can be fully integrated with the Intercall 700 Nursecall System, security systems and CCTV
connection to pagers	output to tone and alphanumeric pagers
call logging	call can be logged via printer or PC logging software
graphical floor plan	utilising bespoke PC software, illustrates location and call
fault monitoring	the system is continuously monitored to detect cable faults and unauthorised tamper
tamper proof	vandal resistant and stainless steel options available



Stainless steel options available



display unit – shows incident locations and caller ID with built in sounder



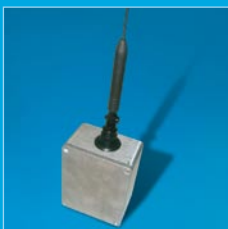
external receiver unit – uses infra red technology to detect incidents in outside locations



internal receiver unit
– positioned inside the building to provide complete infra red coverage



personal transmitter
– uses infra red and/or radio technology to generate a call and identify the location and user ID

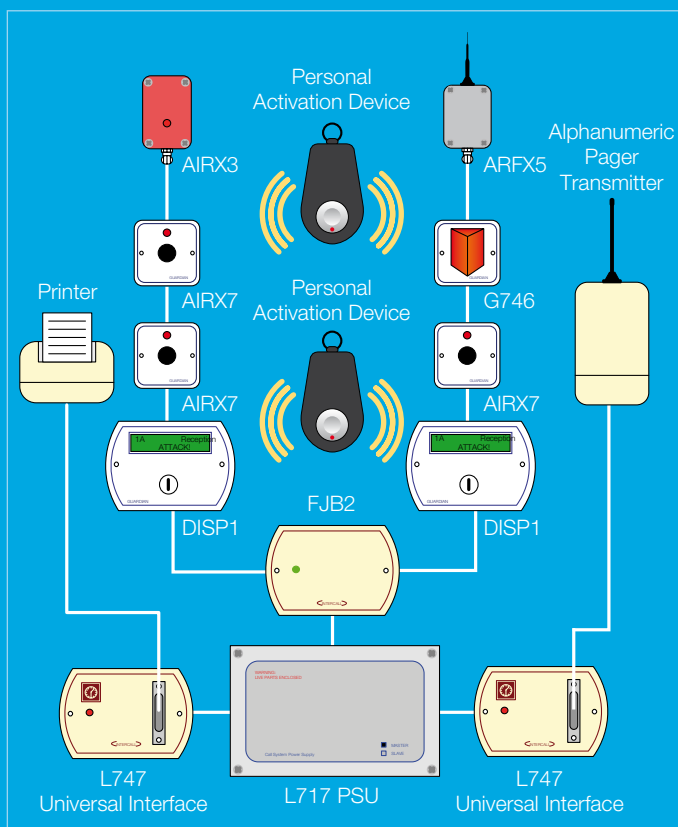


radio receiver unit – used in external areas where infra red coverage is not available



overdoor light – for outside room or end of corridor indication as “follow me” lights

Whatever your working environment, installing Guardian will give staff the assurance that someone is looking out for them, providing a safer and more confident workplace.



the guardian personal transmitter

- Uses Infra Red and/or Radio Technology
- GPS version also available
- Trigger has 6 IR transmitters making it more effective
- Fully programmable options include:
 - one level of call eg “Attack”
 - two levels of call eg “Assistance” and “Attack”
 - one level of call and reset eg “Attack” and “Reset”
- Reset button can also be used to indicate user location
- Records the number of times it has been activated
- Retaining peg ensuring the transmitter stays with you if you change location
- Adjustable timer to cut off transmission after pre-set period
- LED battery status indicator
- Each transmitter has its own unique code for user ID



Guardian Staff Safety Systems Limited

De Montfort House, Enterprise Way
Evesham, Worcs WR11 1GU

Tel: 01386 443539

Fax: 01386 443222

sales@guardiansss.com

