

IP Video Intercom

Simple and Powerful



IPlus is a revolutionary technology in the video intercom field.

IPlus is simple to install, connect the video monitors, the door entry panels and IPlus cameras into a LAN, and IPlus will be ready to use.

The new IPlus technology from Golmar is based in TCP/IP communication protocol, which allows you to use a new or existing LAN to communicate between units with the best quality digital audio and video streaming, all without the need of installing a server. All parts of the system have RJ-45 connectors, which makes it the simplest, fastest and most secure way to install units

IPlus is an unlimited multichannel intercom system, which allows intercommunication between all elements of the system, even at the same time. Thanks to IP technology the video intercom features are boosted to the limit. The distance, cabling or number of tenants will never be a limiting factor again..

Monitors



Choose the best option for your installation, a colour monitor with audio handset or the incredible IPlus *Full Duplex* hands-free monitor.

The spectacular digital video will amaze all users when they experience IPlus video streaming.

Just 17mm thick when installed surface mounted. With a minimalistic design and simple layout this monitor is one of the most aesthetically pleasing units available.

The new generation of IP video monitors from Golmar offer multiple functions; Intercom with any other monitor on the system, image memory, panels and system cameras tracking are just some of them.

Entry panels



The new IPlus entry panels are manufactured in 2,5 mm Stainless Steel and have a unique treatment to avoid fingerprint spots.

On the digital version the prestigious keypad is backlit in blue, making this panel a perfect option for the most exclusives of homes and buildings. The panel has a 3,5" colour TFT screen to display the tenants names and user instructions.

Custom made panels are also available, built to your specifications with up to 120 push buttons if required and cut to your dimensions. It is also possible to incorporate coded, proximity or biometric access control.

For more information please visit: www.ipvideointercom.com

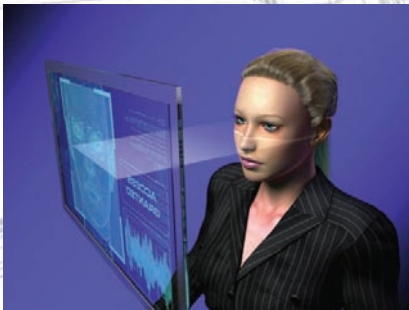
135 High Road, New Southgate, London N11 1PP
0845-389-2298

High Security Access Control by smarti[®]

Bringing you the latest biometric technologies
with facial and voice recognition



smarti uses cutting edge biometric technology



- * Home Security and Automation
- * Access Control
- * Time and Attendance
- * Multi Unit Buildings

We can't always be there to oversee who is gaining access to our premises and secure areas. smarti[®] can be there for you constantly on watch.

Smarti has an incredible range of features and security solutions. Through RS232 and TCP/IP based relays different sensors (light, motion, smoke, door) lights, alarm system and other electronic devices can be connected to the unit, these devices can be controlled through the smarti[®] touch screen interface, remotely by email or from a notebook, iPad or iPhone.

Available as a stand alone system or readily incorporated into your existing building security giving a fully integrated security solution.

A tried and tested award winning solution you can count on now and in to the future.

- Available with IP65 rating for use outdoors
- A date stamped visual record of all events
- Mix and match between 3 monitor styles
- Compatible with IP systems utilising SIP protocols
- Combines biometric technologies with facial and voice recognition
- Choose the features you want to use
- smarti[®] is adaptable as your needs change
- Upgrade your existing security system