

ACCUDROP™ 125 LB. CAPACITY DROP TESTER

Precision drop testing at an affordable price. We call it the ACCUDROP™ 125 drop tester. This drop tester represents the ultimate in product and package performance testing and is designed to meet a wide variety of global testing needs.

TEST WITH CONFIDENCE

Model AD-125 is one of three models in the ACCUDROP™ Series. It helps determine the ruggedness of packages and the effectiveness of their interior cushioning when exposed to impact during material handling. The effects of dropping are easily duplicated in a laboratory setting using controlled and precise flat, corner, and edge drop tests.

Complies with ISTA, ASTM, ISO, MIL STD, and other internationally recognized test standards.

MODEL AD-125 ACCUDROP™ FEATURES

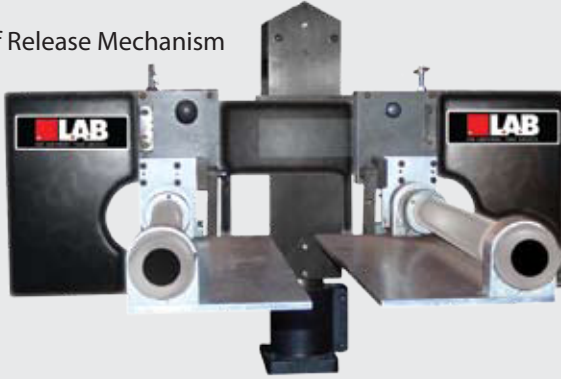
Electric Hoist Lifting Mechanism with Dual Leaf Drop Action

- 125 lbs (57 kg) maximum payload capacity
- 36" W x 26" D (914 x 660 mm) steel impact surface
- 36" W x 26" D (914 x 660 mm) maximum package exterior dimension
- 8" - 84" (203 - 2134 mm) adjustable drop height (custom heights available)
- Reset Disable Switch for preventing package interference on low drops
- Drop height indicator scale allows drop height to be read from floor level
- Hand held pendant for raising and lowering drop arm release
- Drop release using foot actuated pedal
- Versatile package height
- Package Holding Fixture holds package in correct orientation prior to drop



ACCUDROP 125 AD-125

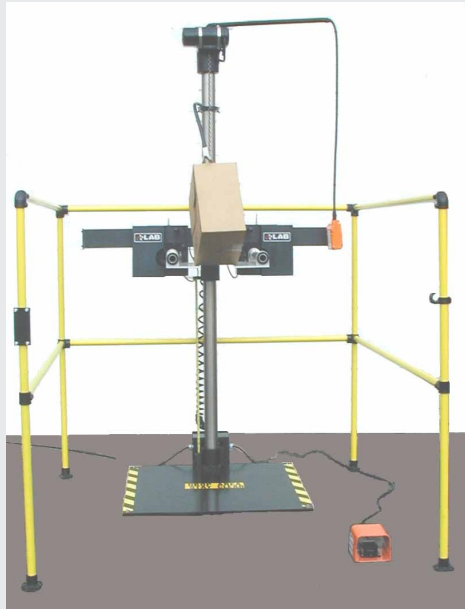
Dual Drop Leaf Release Mechanism



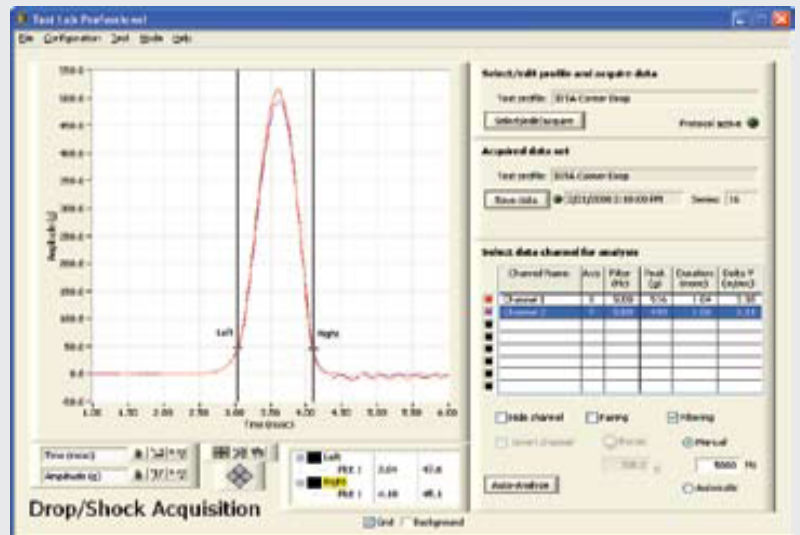
AD-125 ACCUDROP™ OPTIONS

- Extended drop height
- Enlarged base plate for larger packages
- Extended drop arm for wider packages
- Wooden base plate for MIL STD 810 testing
- International power source/CE Compliance
- Safety Fence

SAFETY FENCE/CE COMPLIANCE



TEST LAB PROFESSIONAL (TLP)™ DATA ACQUISITION SYSTEM: DROP & SHOCK



STANDARD SPECIFICATIONS

AD-125



| | |
|------------------------------|------------------------------------|
| Payload Capacity | 125 lbs / 57 kg |
| * Drop Height | 8-84 in / 203-2134 mm |
| Package Size | 36x26 in / 914x660 mm (WxD) |
| * Impact Zone | 36x36 in / 914x914 mm (WxD) |
| * Utility Requirement | 120V/1PH/50 or 60Hz, 10 Amp |
| Machine Weight | 1,000 lbs / 454 kg |
| Machine Dimensions | 108x60x36 in/2.7x1.5x0.9 m (HxWxD) |

* Please consult L.A.B. Equipment, Inc. for non-standard specifications

Due to our continuous commitment to product development, the above specifications and features may be modified without notice.

