

## Technical data

### Sandwich mountings 1000 - 8000N 300, 302 and 303 series



#### Sandwich mountings

The sandwich mounting, so called because of its layered construction, is a well proven established design that provides an economical method of isolating heavy industrial machinery.

The steel fixing plates either side of the mounting are separated from each other by a rubber element bonded to a steel centre plate. This design gives the sandwich mounting a high load carrying in a small compact shape. This feature is particularly useful where the mountings are required to have a high load carrying capacity and at the same time a high degree of either horizontal or torsional flexibility.

Sandwich mountings may be used to decouple modes of vibration by the use of mountings inclined at an angle

beneath equipment and for applications where it is desirable to accommodate relative movement between adjacent structures such as overhead gantries and walkways.

The range available covers three different sizes. Each size can be manufactured in a range of different hardness compounds to offer a wide range of load deflection characteristics to suit customer specific requirements.

Typical applications include the mounting of diesel engines, machine tools, test beds, vibratory hoppers and conveyors, concrete block-making machines, large exhaust systems etc.

Technical data

Sandwich mountings 1000 - 8000N  
300, 302 and 303 series

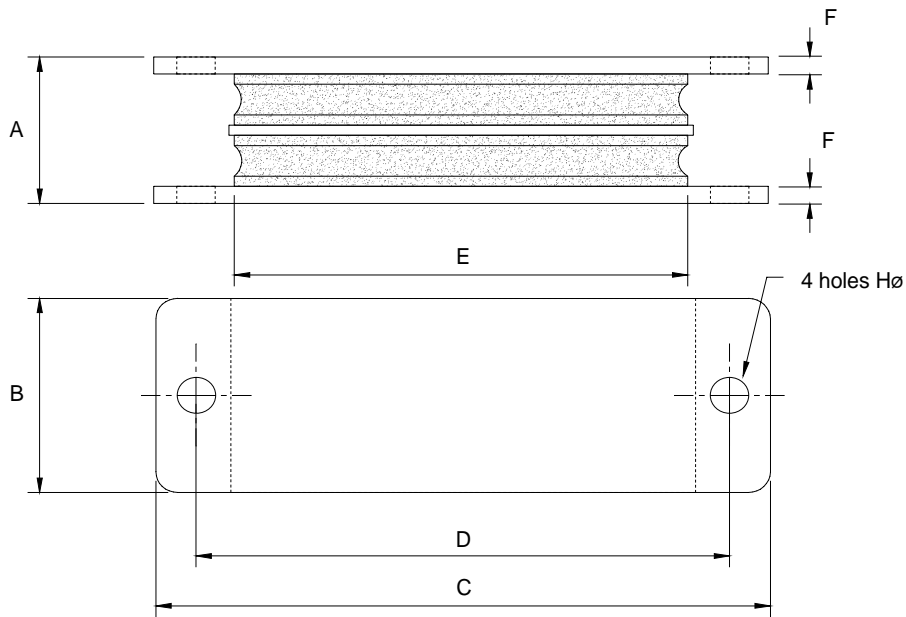


table - maximum loads

part no:	colour code	A	B	C	D	E	F	H	compression	shear
300	green	43	57	108	89	64	5	10.5	3000N	450N
302	green	43	57	168	146	83	5	10.5	6000N	600N
303	green	43	57	168	146	127	5	10.5	8000N	900N

