

Bright Clear Custom Sport Structures



# Welcome



## Clear Bright Custom Sport Structures.

Rubb Buildings Ltd continue to be successful when it comes to the design and construction of sports halls.

The key points to Rubb's successful entry into the sports market are:

- Rubb's experience in pioneering the design and manufacture of permanent and relocatable fabric engineered buildings over the last 40 years
- Total quality in product delivery

The design and planning flexibility, speed of construction and durable cost effective operation of Rubb Buildings provide sports groups worldwide with a competitive edge.

Rubb structures feature high strength PVC coated polyester membrane cladding that is tensioned over an engineered steel frame system. This design provides many benefits including rapid installation, superior structural performance and low life cycle costs.

Funding and constructing private or public sports facilities can be a daunting task and the experts at Rubb know how to meet the challenge.

## Contents

Multi sports	4 - 7
Football	8 - 11
Netball	12 - 13
Tennis	14
Custom	15
Thermohall	16 - 17
Interior Equipment	18 - 19



# Multi Sports

Combination or Multi Use buildings offer a flexible and cost effective solution to meet the seasonal demands associated with university, college or school athletics. Being able to offer many sports in one building maximizes the value of that structure.

Rubb Multi Use facilities incorporate a continuous indoor field space with an area of solid floor surface space that can accommodate a variety of field and court sports such as football, hockey, lacrosse, Gaelic football, rugby, cricket, basketball, volleyball, gymnastics, roller hockey, tennis, and rock climbing.

The floor can function as one large playing surface or be sub-divided into smaller surfaces for younger age groups or training programs. Sport surfaces can be divided using moveable rebound walls, nets or a more permanent divider.

## Quick Construction, Lasting Value.

Affordability and rapid erection help limit the construction impact on-site and in communities. With natural light dispersed through the translucent architectural roof membrane, operating a Rubb sports building is affordable as daytime lighting costs are minimized.

Expand your facility over time -- multiple Rubb Sports buildings can be erected at different times and linked through walkway tunnels to create a modern, naturally lit, affordable sports complex.

Rubb facilities can also be resold, re configured, relocated and reused in a multitude of different applications. With life spans of 25 years and more, a Rubb sports building is a sound long-term investment.



Meadowbank Sports Arena 70m Span x 145m Long BVC



Learn more on our website



scan me

“ We find one of the strongest facets of the building is its versatility. ”

**John McClaughlin**  
Chief Executive Officer  
Magherafelt District Council

# Multi Sports

## Paignton Community and Sports College 42m span x 69m Long BVL

This multi sports building, can cater for a wide variety of sports including badminton, netball, basketball, tennis, football, trampolining and hockey. It can be converted to accommodate 12 badminton courts, eight basketball courts, three five-a-side pitches, eight volleyball courts or four tennis courts. The layout is interchangeable.

Special features include steel clad sidewalls for added security, sidewall gutters for surface water drainage, a ventilation system which provides three-and-a-half air changes per hour, and in a first for the company, an internal lift shaft accessible via a bridge from the car park.

## St Mary's C.E. Middle School Sports Facility 20m span x 48m Long BVE

St Mary's C.E. Middle School opened its new facility on July 12th as the Olympic Torch passed through the town.

Rubb Buildings Ltd worked with main contractor Greenslade to provide a 20m span x 48m long sports hall with sidewalls of 5m, featuring a multi use games area large enough to accommodate a full size basketball court. The area, 8.4m high at the building's apex, can also be adapted to accommodate a match-play volleyball court, a netball court with portable goals, a 18m x 33m 5-a-side pitch, four badminton courts or four mini games courts.

## Taunton Vale Sports Club 24m span x 38m Long BVC

The multi use sports structure features an inner-skin and insulation package, 3m (10ft) high steel clad sidewalls, sports rebound boards both fixed and removable, a high class lighting system providing 750 Lux, a ventilation system and a gas fired Ambi-rad heating system.

The building was designed around the specifications for indoor courts as stipulated by England Netball. However Rubb also used design expertise to ensure that the sports hall may be used for other sports such as badminton, basketball, football, and hockey.

Learn more on our website



scan me



Paignton Community and Sports College



St Mary's C.E. Middle School

“ The Hub has dramatically increased the quality of teaching and learning within PE lessons ”

**Mr David Carpenter**  
Head of PE  
Paignton Sports College



Taunton Vale Sports Club

# Football

## Rubb Football Buildings hit the Premier League.

Rubb has applied decades of experience in design to create sports buildings which provide ideal indoor facilities for all levels of sports teams, from youth amateur to professional leagues.

These multi use facilities can be delivered and installed quickly compared to conventional construction methods. Rubb's clear span design allows these structures to be easily reconfigured for a variety of sports or events, from football and lacrosse to boat shows and trade shows.

### Sunderland A.F.C Academy of Light

82.4m span x 65m Long BVC

Rubb Buildings Ltd was a key player in the team tasked with completing a new indoor training facility for Sunderland Association Football Club.

Sunderland's stars of the future will begin using the Rubb training hub at the Academy of Light, Cleadon following the official opening on December 7, 2012. Local manufacturing SME Rubb pitched in with Tolent Construction Ltd and architects Red Box Design Group to make SAFC's long awaited training facility plans a reality.

The sports building features Rubb's largest building span width to date at 82.4m. The facility measures 64m long with sidewalls of 7.75m and a central internal clearance of 10m high.

The structure stands 12.5m high at its apex and comprises a galvanized steel frame, a white PVC clad roof, a large gutter system, a Fullflow syphonic drainage system and four large vent roof cowls along the apex. The translucent roof allows natural daylight to illuminate the interior which includes a full size indoor 3G football pitch.



Learn more on our website



scan me

“ Indoor football training facilities are key for young players of today. ”

**Sir Tevor Brooking**  
FA Director of  
Football Development

# Football

## Newcastle United Football Club

67m span x 90m Long BVL

The 67m by 90m building, which houses a full sized football field, is located at the club's training centre in Longbenton, Newcastle.

The sports building was tailor-made to meet Newcastle United's own specifications while remaining within local planning restrictions.

The club needed an area that was large enough to hold a full sized pitch and high enough to provide headroom for throw-ins and free kicks. In addition the building needed to be in place within a fairly short time-frame.

## West Bromwich Albion

70m span x 105m Long BVC

Rubb rose to the challenge set out by West Bromwich to provide a custom training facility.

Rubb's use of an I-beam column leg system as an alternative to lattice truss construction maximises the internal playing area.

The sports structure meets with all local building codes and post production hot dip galvanizing to BS ISO EN 1461 standards ensures steel surfaces are protected against corrosion.

The PVC coated polyester membrane cladding flies the club colours of dark blue and white and the white translucent roof provides a bright and airy atmosphere.

## Soccarena Indoor Football Arena

50m span x 138m Long BVC

Football stars of the future continue to benefit from Soccarena football facility in Durham.

Chairman Stewart Dawson and his associates wanted to build an indoor football complex that could accommodate up to eight 6-a-side pitches that would be useable all year round.

He said: "I was delighted when I discovered there was a local company that could help fulfil my dreams of Soccarena." Rubb won the contract after impressing the Chairman with a proven track record, quality product and professional level of service.

Learn more on our website



scan me



Newcastle United Football Club



West Bromwich Albion Football Club

“Rubb fulfilled every aspect required whilst delivering a first class indoor facility.”

**Mr Stewart Dawson**  
Chairman  
Soccarena



Soccarena Indoor Football Arena

# Netball

Rubb have played themselves nicely in to the field of netball over the last few years after completing a number of different facilities.

Using knowledge and experience gained over many years Rubb have designed and erected ideal indoor netball facilities for all levels from schools to national clubs.

As with the majority of Rubb structures the netball halls can be delivered and installed quicker than conventional buildings whilst offering a bright and airy atmosphere that can, if required, be used for additional sports.

## Budehaven Sports Hub

39.5m span x 35m Long BVE

The project started out as a one court tennis hall which grew into a two court hall after more funding was secured. Then the design was changed to also accommodate two netball courts. This involved increasing the height of the building while maintaining the overall footprint. The custom designed sports hall measures 39.5m x 35m with 7.2m high sidewalls of which three metres are steel clad.

Rubb was responsible for providing the steel framed superstructure which is clad with a PVDF coated polyester fabric membrane. General Manager Ian Hindmoor said: "The steel clad sidewalls add protection and the white fabric allows natural light to penetrate into the hall to provide a light and airy atmosphere ideal for both sports."

Mrs Denise May MBE, Director of Sport and Assistant Headteacher at Budehaven said: "The new facility is an iconic building for both the school and wider communities. It has enabled us to enhance the sporting provision for our 1300 students and feeder primary schools; support the development of two growing sports of netball and tennis in the town, creating centres of excellence and generating new sporting opportunities for all. The centre is now at the heart of our school and community leisure provision and in the lead up to 2012 will provide a lasting legacy."

Learn more on our website



scan me



“The new facility is an iconic building for both the school and wider communities.”

Mrs Denise May  
Director of Sport  
Budehaven Community School

# Tennis

From a full size multi-court indoor tennis facility to our TenniShelter Mini-Tennis Hall, Rubb has your Tennis needs covered.

Tennis facilities present particular technical challenges that Rubb structures solve ideally. The translucent roof provides ample natural light. Signage, windows, door lighting, climate control and canopies are all available, making a Rubb Tennis Hall the perfect venue for training and competition.

Now every school, club and coach can have a 12 month indoor program!

The Rubb TenniShelter Mini Tennis Hall features:

- Long life Galvanized Steel frame
- PVC membrane allows for shadow free natural light
- High Density playing surfaces available in a choice of colors
- Traditional foundations are not always required
- Complete with windows, doors, and signage

Quick Construction, Lasting Value.

Affordability and rapid erection help limit the construction impact on campuses and in communities. With natural light dispersed through the translucent architectural roof membrane, operating a Rubb Sports Building is affordable as daytime lighting costs are minimized.

Expand your facility over time -- Multiple Rubb Sports Buildings can be erected at different times and linked through walkway tunnels to create a modern, naturally lit, affordable sports complex.

Rubb facilities are full-featured buildings that can be resold, reconfigured, relocated and reused in a multitude of different applications. With life spans of 25 years and more, a Rubb sports building is a sound long-term investment.



Chesterfield Lawn Tennis Club

Rubb have provided a state-of-the-art indoor sports facility.

Paul Hatton  
Head Coach  
Chesterfield Lawn Tennis Club

Learn more on our website



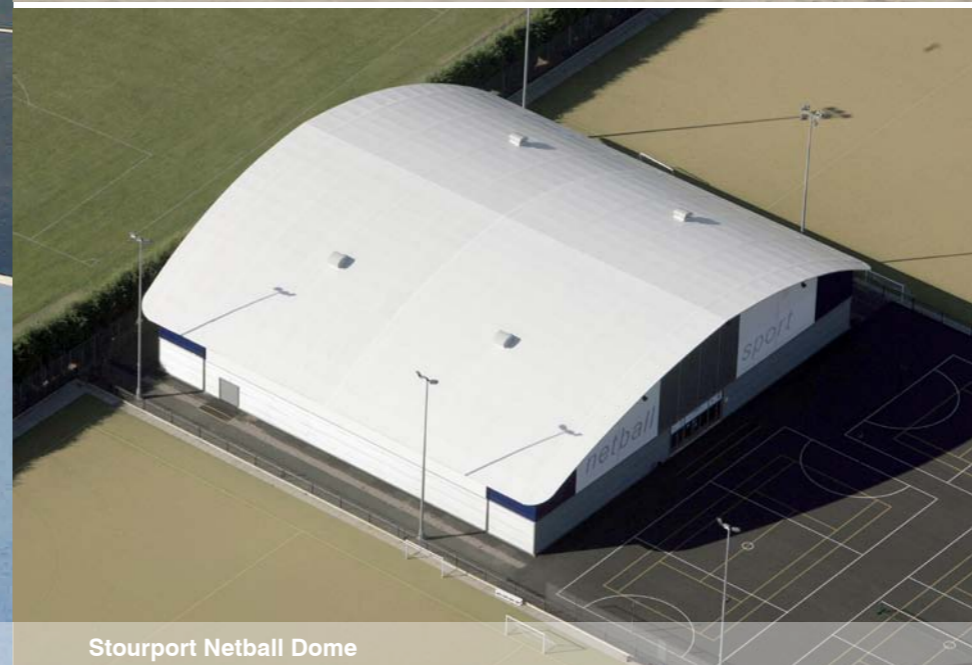
scan me



Blue Flames Sporting Club



Oakmead College of Technology



Stourport Netball Dome

# Custom

Our experienced engineers work closely with architects to produce imaginative solutions to specific site or application problems.

Rubb provides innovative cost effective solutions with rugged, quickly erected tension fabric buildings that are available in a wide variety of sizes, colors and shapes.

Each plant features state-of-the-art manufacturing equipment and CAD systems that have been developed over the years to ensure that Rubb buildings meet stringent quality standards.

At Rubb, ISO 9000 Quality Assurance procedures are the foundation for all operations, from initial briefing through to final commissioning. Engineered fabric buildings can be designed to meet any international building code with respect to wind or snow loading and have been proven over many years in extreme climatic conditions. From Arctic to tropical and desert locations, Rubb prefabricated structures provide outstanding service for an increasingly wide range of applications.

Rubb provides innovative solutions with tension fabric structures that meet a wide variety of customer-specific requirements.

We combine imagination and practical experience plus engineering and manufacturing expertise to produce cost-effective solutions that meet or exceed our customers' expectations.

Learn more on our website



scan me



# Thermohall

The outer membrane cladding of a Thermohall building is manufactured using the same high strength PVC coated polyester material used and proven on Rubb's uninsulated buildings. These materials have a self cleaning exterior finish and feature coated weights ranging from 850 gm<sup>2</sup> (25 oz/yd<sup>2</sup>) to 950 g/m<sup>2</sup> (28 oz/yd<sup>2</sup>) for most applications. PVC battens are welded to the outer cladding panels at regular intervals and then to the inner fabric panels to create closed cells to hold the glass wool insulation. The +/-550 g/m<sup>2</sup> (16 oz/yd<sup>2</sup>) inner fabric is white and has a self-cleaning coating on the inside face.

## The benefits of Thermohall

Insulated panels include outer weather liner, integral glass wool insulation and inner liner

System provides a full vapor seal greatly reducing infiltration losses as compared to other insulation systems

Insulated panels completely cover the structural frame to minimize thermal bridging. This greatly reduces the condensation on framing members and improves insulation efficiency

Factory pre-fabrication offers significant labor savings on site and greatly reduces installation time

The system leaves the structural frame exposed internally allowing for more efficient installation and service of electrical and mechanical equipment

The system is fully and easily relocatable

- **Thermohall Light (50mm) U-value 0.53 W/m<sup>2</sup>K**
- **Thermohall Standard (100mm) U-value 0.31 W/m<sup>2</sup>K**
- **Thermohall Extreme (150mm) U-value 0.22 W/m<sup>2</sup>K**

Learn more on our website



scan me



# Equipment

Rubb are able to design, supply and install a range of interior packages and specification options to suit the type of sports being played inside your Rubb sports building.

## Division nets & curtains

We can supply and install netting for sports halls;

- division netting
- gallery protection netting
- archery and golf practice netting
- indoor tennis stop netting

## Rebound screens

Rebound screens can be used to create separate five-a-side courts in a large sports hall;

- to create walkways at the side or end of courts
- to create a flat rebound surface in front of doors or other openings

## Flooring

Rubb can offer a variety of sports floors to suit your specific sport as well as catering for multi sport facilities.

## Scoreboards

We offer electronic multi-sports scoreboards to provide scoring for all sports and sport-specific scoreboards for such sports as

- judo
- Wrestling
- Tennis
- Ice Hockey
- Table Tennis
- Basketball.

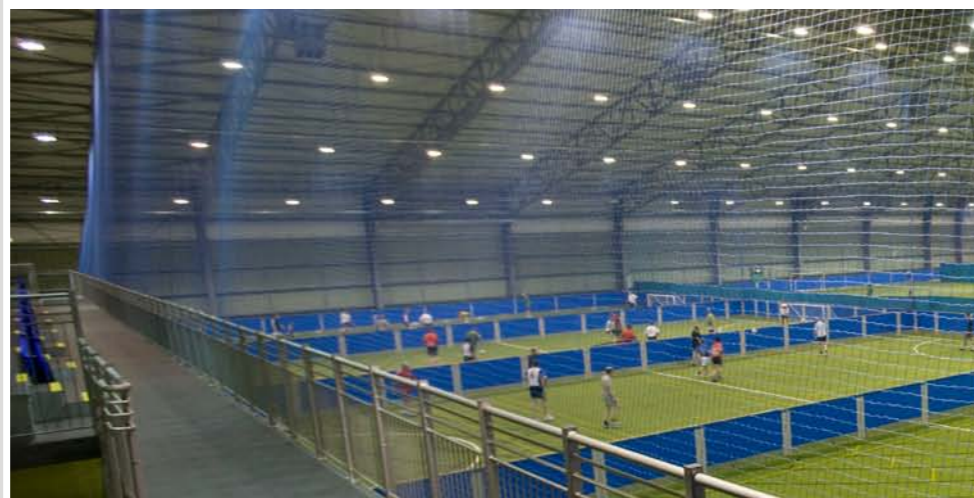
## Individual Sporting Accessories

Rubb can provide the correct accessory for each sport from football goals to tennis nets and adjustable basketball backboards.



“ International players believe it to be one of the best purpose built facilities in Europe. ”

**Annetta Minard**  
Executive Headteacher  
Oakmead College of Technology



“ SAFC has been described as the best facility at club level in the country. ”

**Peter Weymes**  
SAFC Facilities Manager





*we will never stop innovating...*

Dukesway  
Team Valley Trading Estate  
Gateshead  
Tyne & Wear  
NE11 0QE

**E:** [info@rubb.co.uk](mailto:info@rubb.co.uk)  
**T:** +44 191 482 2211

[www.rubb.co.uk](http://www.rubb.co.uk)