



INDUSTRIAL

INNOVATIVE | DESIGN LED | SUSTAINABLE

MORE VALUABLE
www.howdens.com

Our permanent & temporary industrial buildings are individually designed and quickly deployable. Types include temporary warehouse buildings & loading bay canopies.



DELIVERING PIONEERING BESPOKE STRUCTURES FOR OVER 30 YEARS

An Established Family Business with Passion and Expertise.

My father established CopriSystems 30 years ago and from the outset, I was involved in one way or another. Learning the nuts and bolts of the business formed my expertise and has helped me stay at the forefront of the fabric-covered structures industry, with a passion for continuing improvements to their design and functionality.

In the last 10 years, the company has added to its design and build portfolio, increasing steel clad structures in the industrial sector, sport domes, agricultural buildings and Geodesic domes.

Product Longevity and Sustainability

During this time, I've been pushing for greater longevity in our product to benefit our customers and help reduce harmful Greenhouse gases. For this reason, all our frames are galvanised steel or Glulam wood, which is sustainably sourced with six trees planted in place of each tree used.

As a company, we've also been working closely with our suppliers to create ever-improving insulation on all covering materials. For example, with PVC fabric, great progress has been made and promising developments are ongoing. Our PVC fabric provides CopriSystems customers with wind and rain proof structures perfect for unpredictable weather. Our finest materials with added features such as ventilation also

allow customers to control the environment of their temporary or permanent structures, allowing storage of sensitive items.

Turnaround Times

With all our structures we've developed a unique installation method, allowing for a quick and safe turnaround that ensures minimal inconvenience to the customer. This is certainly much appreciated by so many of our customers working to just-in-time requirements.

Conclusion

With the expertise of our team, our customer focus, superior products and logistical skills, I strongly believe CopriSystems is best positioned to create and deliver the highest standard of structures to customers.



Rafe Colenso
Director



CopriSystems designed and installed a canopy dome for us, helping us streamline workloads in all weathers, adding fluidity and efficiency to the system. We would happily use CopriSystems again, we had an excellent service and good ongoing relations.

Richard Gibbons, Facilities Engineer
Howdens Joinery Co.



CONSULTATION

This crucial first stage of the process ensures we fully understand the needs of your organisation. It includes an in-depth survey of your site which results in a comprehensive list of requirements. We'll also discuss finance options, timescales and any planning considerations.



DESIGN

Our bespoke approach allows us to design a unique structure that more effectively meets the needs of your operation and overcomes any hurdles efficiently. Once design plans are finalised we can also assist you with any planning applications required.



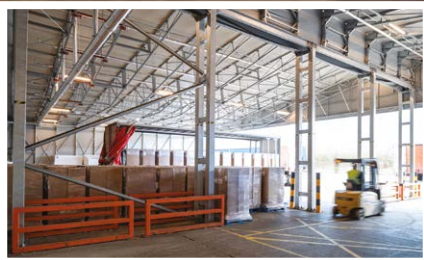
INSTALLATION

We place great importance on the quality of the installation and its impact on our customers, ensuring not only a quick process but one with minimal disruption. We offer long term guarantees on our structures and a comprehensive support and maintenance service.

WE OFFER A FULL SERVICE

From start to finish we'll take care of everything with a full turnkey service that's been honed over 30 years.

OPTIMISE YOUR SPACE



INNOVATIVE DESIGN & BUILD SOLUTIONS FOR PERMANENT & TEMPORARY BUILDINGS

CopriSystems is a market leader in the design innovation, manufacture and installation of warehouses, extensions, shelters, bespoke structures, and sports and events domes.

With over 30 years' experience and expertise we diversify, design and build unique spaces for major blue-chip companies in both the private and public sector. We will work with you as partners, taking on-board your every need to build structures that meet your specific requirements and that are environmentally friendly and safe.

With many purchasing options such as renting. Our tailor-made structures conform with building regulations for wind and snow, whether using Galvanised steel, glulam wood or aluminium with a PVC covering or steel cladding to meet different specifications. At CopriSystems, we can adapt to your needs, whether you need a temporary build or permanent buildings - we design buildings for the future to align with your company's future goals. We can make space for new and innovative technology, robotics and digital platforms which will increase productivity. After all, technology can only work well for you if you have the space to integrate and deploy it in your environment effectively.

Optimisation of new space will mean that new additional covering will need to be used to full effect and will be an important issue going forward. CopriSystems' bespoke

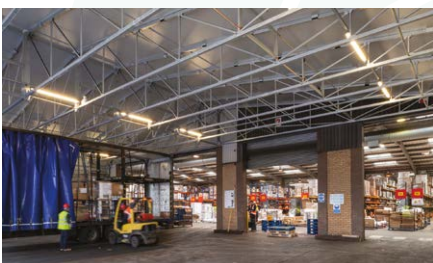
vision enables us to respond to market changes to ensure progression.

Our adaptable solutions can be altered and moved to suit the needs of your environment. Adaptability is required down the supply chain in order to manage the stock flow. All of these trends mean warehouse operators make effective use of their space, and this is a key factor in creating new buildings and system designs that boost employee ergonomics and increase service levels.

We like to blend technology and design and, as a result, we offer virtual design solutions and we are currently working with our suppliers on new ideas taking into account market changes.

CopriSystems supply a structure that works for your business requirements and timescales. We achieve this by offering full turnkey projects, starting with meticulous design, thorough planning (if required) and professional installation (including lighting, doors and groundworks).

Additional space can be installed within days. We offer sustainable, energy efficient solutions that allow your company to expand.





LET'S DESIGN & BUILD TOGETHER

Contact us for more information, a quick quote or a site visit.

01380 830 697

info@coprisystems.com

Or take a look at our website where we are sure you will find a structure perfect for your site.

www.coprisystems.com

CopriSystems Limited

Lower Road, Erlestoke
Devizes, Wiltshire SN10 5UE



CopriSystems takes its environmental responsibilities seriously. With that in mind, this brochure has been printed on a sustainable paper source meaning the equivalent amount of CO₂ from the production and distribution has been captured by planting trees within the UK.