



# Breach Control System

Security and Safety right from the start



FlipFlow



# Security and Safety

From the beginning

The record FlipFlow provides a high level of security for a wide range of applications. The user friendly, one-way traffic, security system delivers a high volume throughput, without jeopardizing controlled access. Featuring advanced detection and control technology, integrated with functional and reliable barrier components, the FlipFlow provides security and safety in a practical, modular construction. The non-intrusive style does not impede pedestrian flow. The structural design is robust and easily maintained. Delivers safety and security at the desired level while being user friendly and easily maintained. The FlipFlow adds value to your installation, offers reliable and repeatable performance and provides discreet but dependable safety and security.

- Deters exit lane security breaches.
- Maintains high throughput exit lanes.
- Prevents unauthorized secure area access.
- Controls object transfer to secure areas.
- Increases security resource allocation options.



# Facts

Preventing unauthorized access

- The Twin version offers the highest security level utilizing a series of infrared sensors in combination with volumetric detection to prevent unauthorized access. The sensor system also scans the interior of the door system to detect the presence of objects left in or passed through the corridor.
- The FlipFlow Twin Extended offers the same features as the "Twin" version, but includes an additional barrier on the non-secure side. The gate design adds one more layer of security to deter anyone from attempting to enter from the non-secure side. In proper operation, the gate is closed when there is no pedestrian flow going through the exit and serves as a warning barrier to prevent unauthorized access through the door system.
- For applications requiring an extremely high volume of throughput, multiple units can be placed side by side to handle peak pedestrian flow. Each individual FlipFlow is controlled separately, so the units not in use can be locked secure and unused during lower volume periods.



# FlipFlow



# Your choice

Different concept for different needs

## TWIN

- Glass tunnel with 2 pairs of automatic doors and intelligent sensors.



### Purpose

- Ensures efficient flow of pedestrians (passengers) in one direction only, preventing the return or entry of any unauthorized person from the non-secure side. Optional feature: surveillance of interior space to prevent the passage of objects to the secure side and detect objects left in the passage area.

### Use

- Effective barrier to separate secure and non-secure areas. As a border between air-side and land-side as well as transition areas to secure zones.

### Your benefits

- High security, anti-access system with maximum security features. Compact and transparent design, easily accessible for individuals with disabilities.

### Operating modes

- Flow of traffic, open, locked, interlocked, maintenance and cleaning.
- Optional: extended low glass balustrade (rail) corridor with swing gates for increased security and pedestrian control.

## SINGLE

- Glass tunnel with single pair of automatic doors and intelligent sensors.



### Purpose

- Channels pedestrian flow in one direction with effective anti-return feature. Provides optional static object detection inside the tunnel.

### Use

- Effective barrier for the separation of secure and non-secure areas; for example as a border between air-side and land-side.

### Your benefits

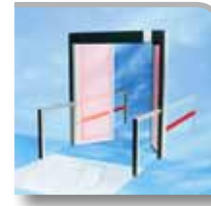
- Efficient and economical, anti-access system with high security features. Compact and transparent design, easily accessible for individuals with disabilities.

### Operating modes

- Flow of traffic, open, locked.
- Optional: maintenance, cleaning.

## WIDE

- Larger gate with one pair of automatic doors, sensors and lateral guides.



### Purpose

- Prevents access from non-secure to secure side.

### Use

- Ideal after baggage claim, exiting customs or used as a secure emergency egress opening.

### Your benefits

- Simple and economic anti-access system, for medium security requirements.

### Operating modes

- Flow of traffic, open, locked.

## Key Features:

- Provides multiple options to conform to desired level of security.
- Allows the reallocation or exclusion of security staff.
- Easily fits into existing pedestrian exit corridors.
- Signal interface, allowing remote monitoring and control.
- User interface for parameter settings, error codes and alarms.
- Selectable modes for operation, cleaning and maintenance.
- Integrates with existing TCP/IP networks (optional).

## Operating modes:

- **Flow:** security active, doors on both ends of corridor may be open at the same time for enhanced throughput.
- **Interlocked:** security active, doors may be open only at one end of the corridor for enhanced security.
- **Locked:** out of service / locked and secured.
- **Open:** security inactive, doors held open for VIP passage, emergency ingress & egress, etc.
- **Cleaning / maintenance:** security inactive, controlled access provided for service and cleaning personnel only.

# Effective flow control

High-volume throughput

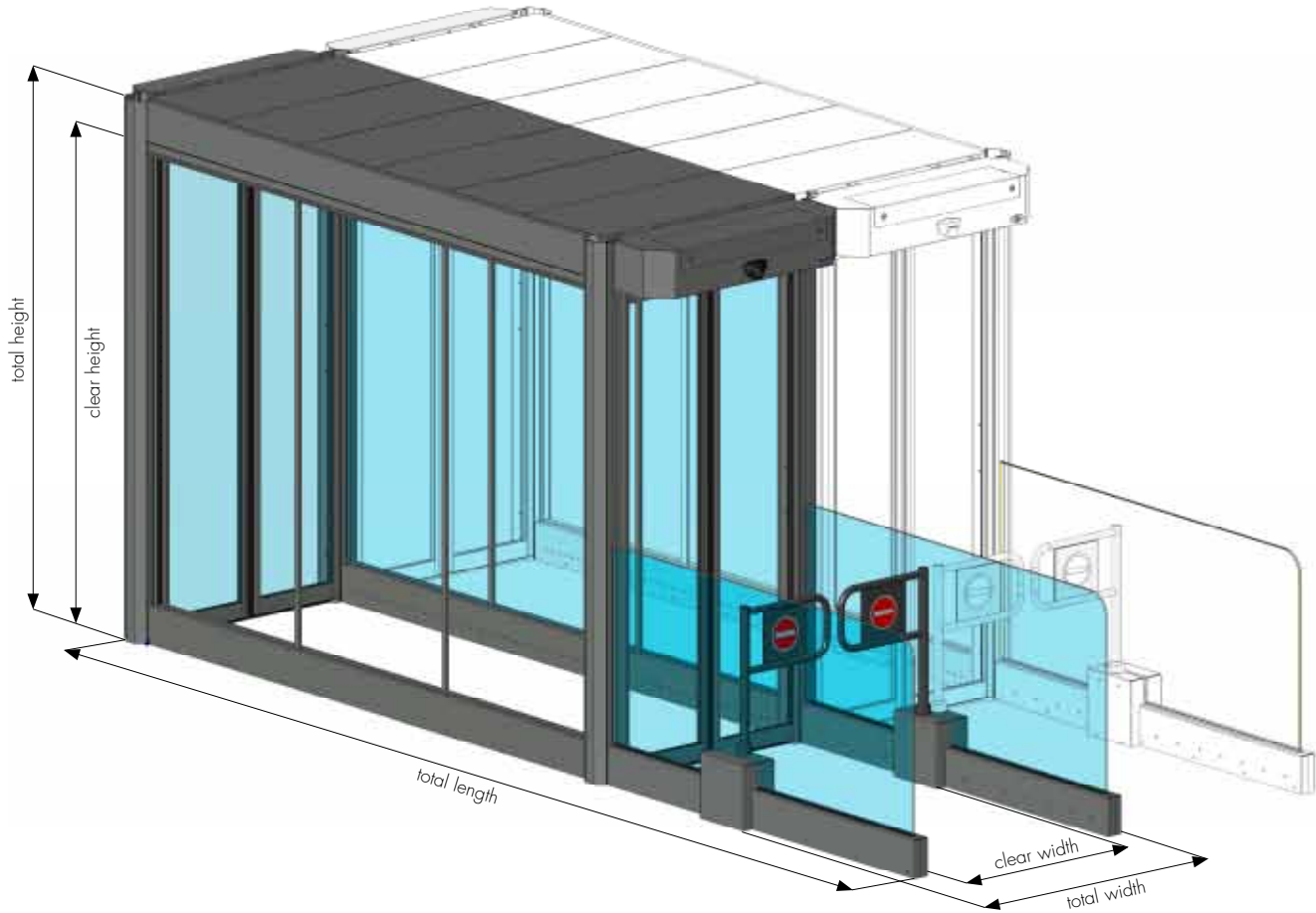


FlipFlow



# Technical

Details and sizes



## Data

### TWIN

- total length 5242 mm
- total height 2365 mm
- total width 1230 mm
- clear height 2150 mm
- clear width 900 mm

### Optional

- clear width XL 1100 mm
- clear width XXL 1200 mm

### SINGLE

- total length 5242 mm
- total height 2365 mm
- total width 1230 mm
- clear height 2150 mm
- clear width 900 mm

### WIDE

- total length 2248 mm
- total height 2365 mm
- total width 1230 mm
- clear height 2150 mm
- clear width 900 mm

# Our statement

record – the right partner for your needs

Our top priority is your complete satisfaction with the quality of our products and services.

By this we mean:

- Individual, professional advice in choosing security access solutions
- A wide range of high tech products to meet any security automation requirement
- Contemporary designs which are compatible with any architectural style or plan

Twenty-two subsidiaries in Europe, Asia and the United States, provide over 50 years of experience in manufacturing, sensor technology, electronics and software development for automatic door systems and related products. Satisfied customers all over the world have chosen record as their partner, the right partner for your installation.



# FlipFlow



# Contact

Please contact us for more information:

## European subsidiaries

### → Austria

record Austria GmbH – tel. +43 1 865 88 75 – office@record.co.at – www.record.co.at

### → Denmark

record BMT as – tel. +45 36 78 23 00 – salg@recordbmt.dk – www.recordbmt.dk

### → France

record portes automatiques SAS – tel. +33 1 69 79 31 10 – record@cordver.fr – www.record-portes-automatiques.fr

### → Germany

record Türautomation GmbH – tel. +49 202 60 90 10 – info@record.de – www.record.de

### → Hungary

record ajtó kft – tel. +36 24 51 53 90 – info@record.hu – www.record.hu

### → Netherlands

record automatische deuren B.V. – tel. +31 26 33 99 777 – info@record-automatischedeuren.nl – www.record-automatischedeuren.nl

### → Poland

record drzwi automatyczne Sp.zo.o – tel. +48 22 73 77 100 – biuro@record.pl – www.record.pl

### → Spain

record Elemat S.A. – tel. +34 93 674 26 50 – info.es@agta-record.com – www.record.elemat.es

### → Slovenia

record avtomatska vrata d.o.o. – tel. +386 590 74 100 – info@record.si – www.record.si

### → Sweden

record dörrautomatik sweden AB – tel. +46 8 550 646 30 – info@rdarecord.se – www.rdarecord.se

### → Switzerland

record Türautomation AG – tel. +41 44 954 91 91 – info@record.ch – www.record.ch

### → United Kingdom

record UK Limited – tel. +44 1698 376411 – info@recorduk.co.uk – www.recorduk.co.uk

### → Headquarters

agta record ltd – Allmendstrasse 24 – 8320 Fehrltorf – Switzerland

tel. +41 44 954 91 91 – info@agta-record.com

