



CD SURVEYS LTD

LAND SURVEYING & SITE ENGINEERING

Land, Measured Building Surveyors & Site Engineers
Specialising in Topographical Surveys, Site Engineering, Measured
Building Surveys, 3D Laser Scanning, Revit / BIM and Aerial Photography

WHO WE ARE

Offering a wide range of services including; Land Surveys, Topographical Surveys, Site Engineering, Measured Building Surveys, Section 38/104/278 Adoption Surveys and CAD Services (Computer-Aided Design). We have always been a customer-focused company, since starting CD Surveys Ltd back in 1992.

CD Surveys Ltd now has prime locations across the South East and home counties. Our head office is based within the M25 at Sunbury-on-Thames, with our second office being based in Ashford, Kent and our third office based in Blackwater, Camberley.

Our head office and Camberley office are conveniently located to allow our survey teams easy access to areas such as Surrey, Hampshire, Oxfordshire, Wiltshire, Buckinghamshire, Berkshire, Hertfordshire & London. Our second, smaller office, is situated to give our locally based survey teams access to the Kent, Essex, East & West Sussex area.

We are not adverse to travelling further afield with regular visits to counties such as Gloucestershire, Herefordshire, West Midlands, Leicestershire, Warwickshire, Essex, Cambridgeshire, Suffolk, Norfolk, Somerset, Bristol, Dorset and even as far afield as Scotland.



LAND SURVEYING

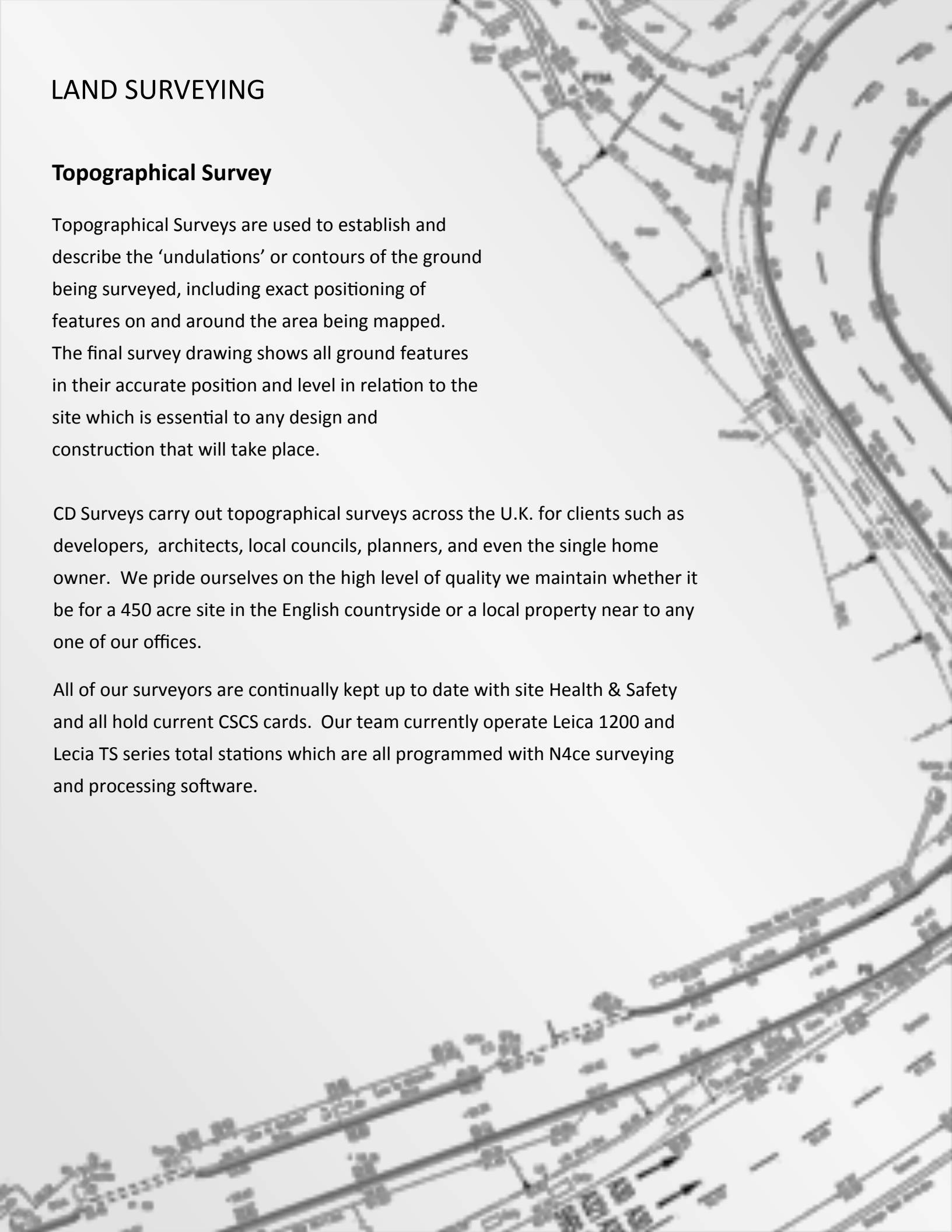
Topographical Survey

Topographical Surveys are used to establish and describe the 'undulations' or contours of the ground being surveyed, including exact positioning of features on and around the area being mapped.

The final survey drawing shows all ground features in their accurate position and level in relation to the site which is essential to any design and construction that will take place.

CD Surveys carry out topographical surveys across the U.K. for clients such as developers, architects, local councils, planners, and even the single home owner. We pride ourselves on the high level of quality we maintain whether it be for a 450 acre site in the English countryside or a local property near to any one of our offices.

All of our surveyors are continually kept up to date with site Health & Safety and all hold current CSCS cards. Our team currently operate Leica 1200 and Leica TS series total stations which are all programmed with N4ce surveying and processing software.



BUILDING SURVEYS

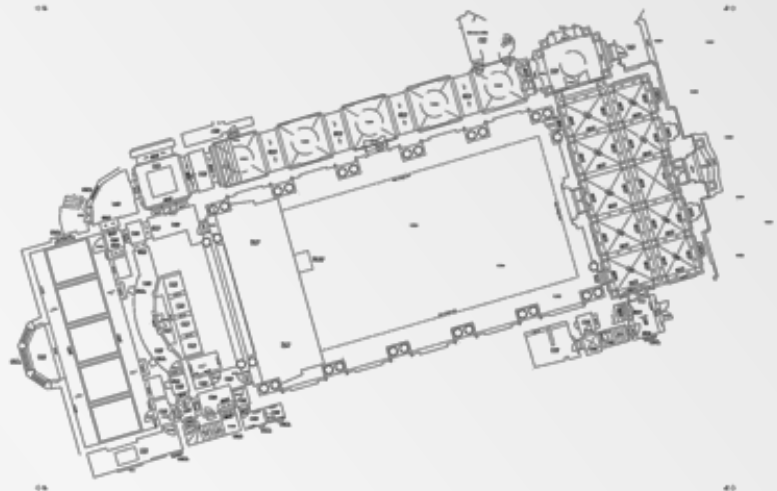
Measured Building Surveys

We have a wealth of experience when it comes to measured building surveys at CD Surveys Ltd. Our experienced surveyors have seen many changes in the way measured building surveys are carried out, from a tape measure, pen and paper to the modern technology of using 3D laser scanners. Over the years our team of surveyors have worked on thousands of measured building surveys including (but not limited to) hospitals, schools, government buildings, offices, residential dwellings, universities, retail centres and churches.

Our measured building surveys provide our client with accurate plans to the appropriate scale and with our experienced team we aim to always complete our surveys with the minimal disruption as possible. We work closely with our client from the first instruction to ensure that each quotation is tailor made and to our clients desired schedule. Our measured building surveys can include Floor Plans, Roof Plans, External Elevations, Internal Elevations, Street Scene Elevations, Reflective Ceiling Plans and Cross Sections.



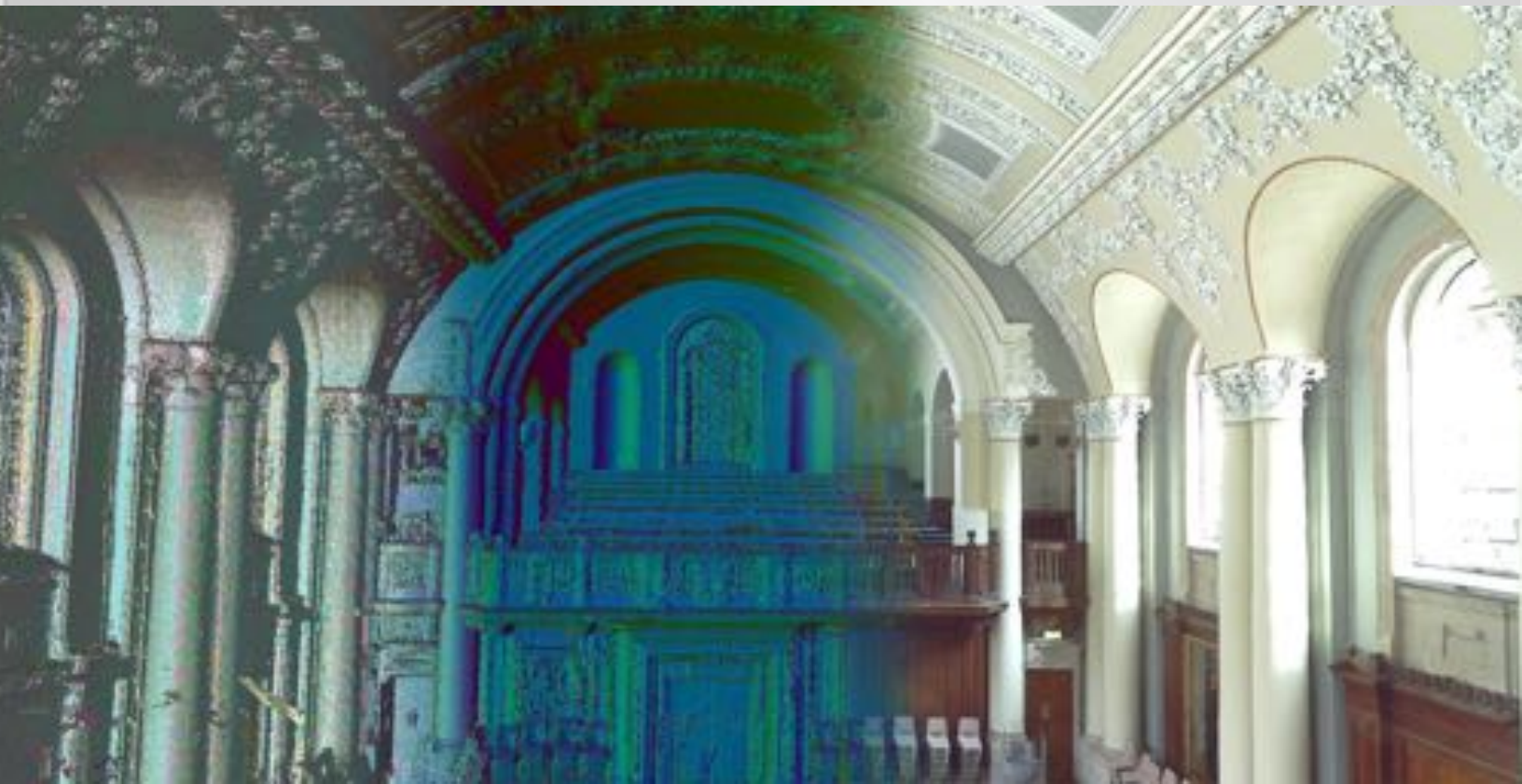
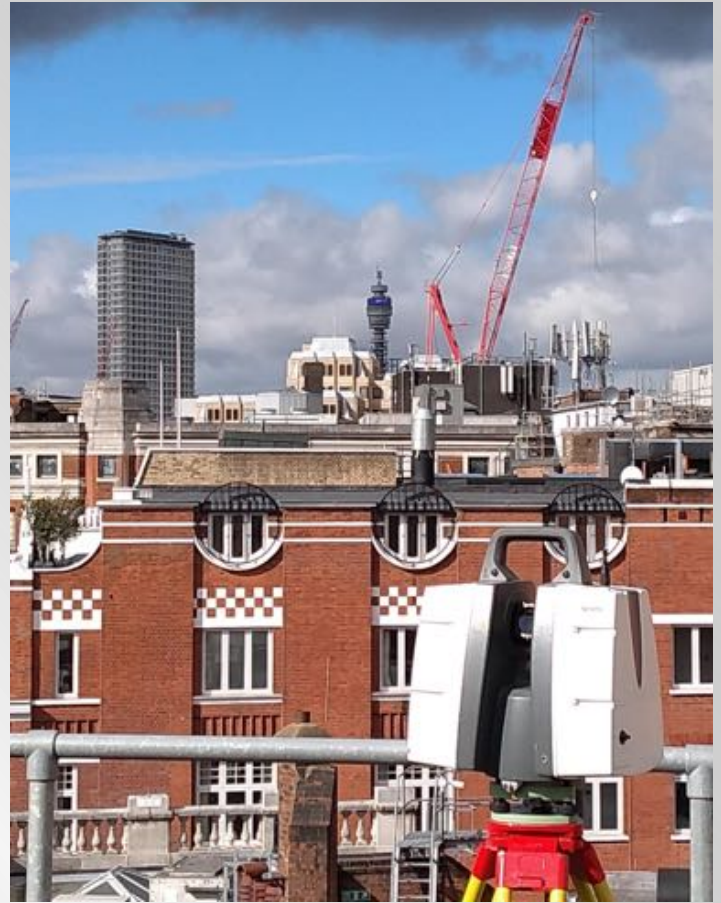
Datum Used: 10.00m
Elevation 2



3D Laser Scanning

At CD Surveys we have two options with both the Faro 130X and Leica P40 3D laser scanners. Both are excellent in their own right and give us the ability to combine both scan data sets together to form one 3D point cloud model. This allows us to minimise site time and reduce disruption the survey may cause to the occupants of the building. As well as being time efficient the use of 3D laser scanners also increases the level of detail that is collected on site.

The billions of points collected in the point cloud, along with the high resolution photographs embedded into the data, allows the end user an excellent base to draw the desired final output. This data can also be drawn into a detailed 3D Revit model and we can also provide the raw 3D point cloud data which can be used as a presentation tool, for viewing and recording the site at the time of the survey.



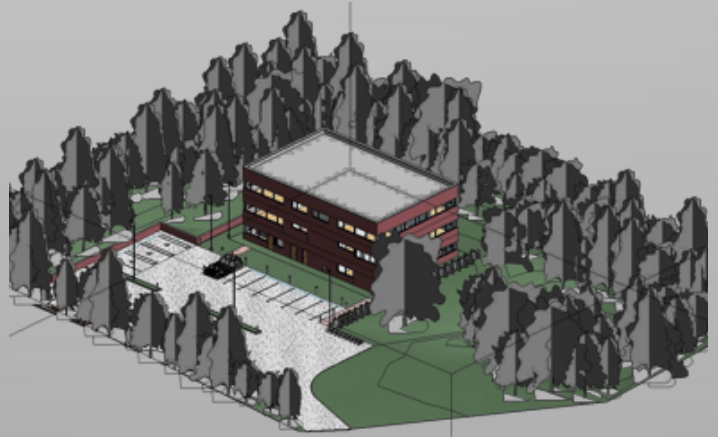
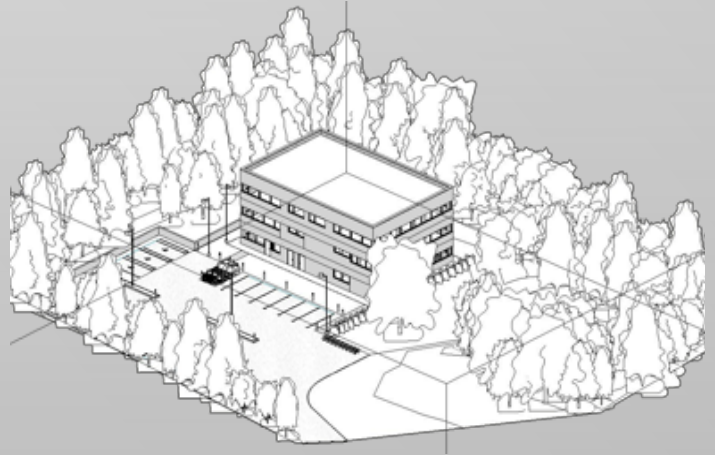
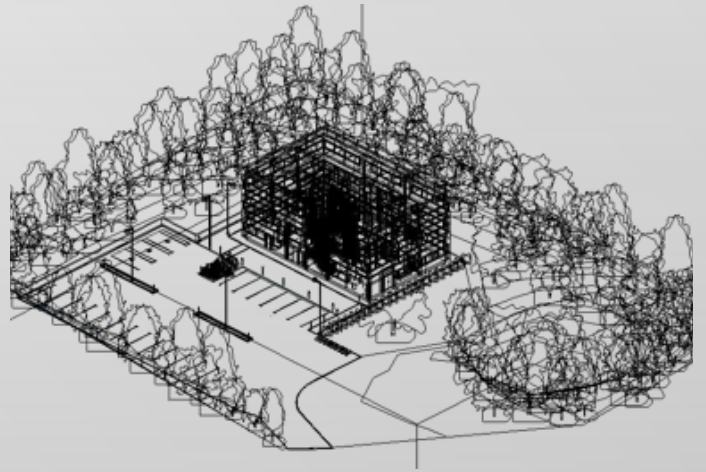
Revit / BIM

BIM was brought to wide industry attention in the UK Government Construction Strategy published in 2011. The report announced the Government's intention to require collaborative 3D BIM on all of its projects from 2016, which is now underway.

Our As Built Revit models are created from both our 2D measured building drawings and our surveyed point cloud data.

From basic Revit models to highly detailed complicated family creations our experienced team of technicians can work with the client throughout the different stages of the build project.

Autodesk Revit allows the user to design / draw a building, its structure, components along with the surrounding topography in a 3D working model. At CD Surveys Ltd we can offer a variety of options when using Revit, these can involve surveying and producing a working 3D model of a current site, producing a 3D model from existing 2D plans or producing a 3D model of the surrounding buildings to overlay against the current site information.



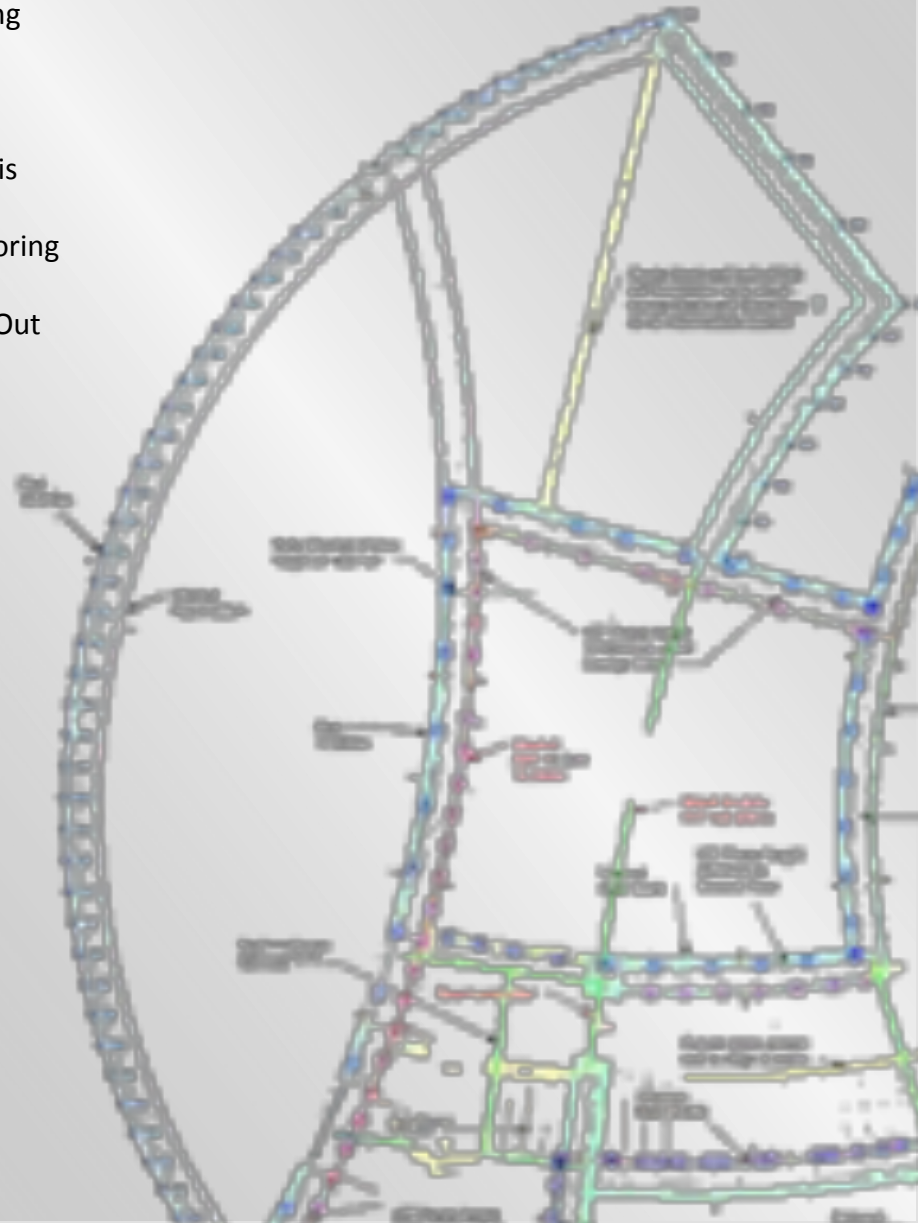
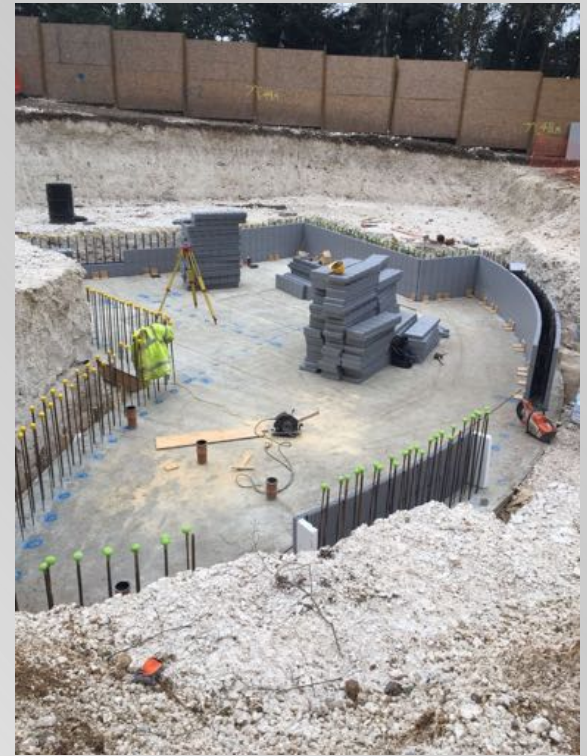
SITE ENGINEERING

It is essential that the location and levels of any proposed construction are entirely accurate. CD Surveys can offer our clients reliable and experienced site engineers UK wide. Our clients use our professional team to provide services such as site setting out, datums, piles, gridlines, building & services locations and even boundary positions.

With a wealth of knowledge and experience amongst our team of engineers, combined with the expertise provided from our dedicated team in the office, we are able to tackle even the most complex of sites.

CD Surveys can offer the following in terms of Engineering;

- | | |
|------------------------|----------------------|
| Site Engineering | Building Monitoring |
| AS Built Surveys | Site Setting Out |
| Verticality Survey | Volumetric Analysis |
| Pile Setting Out | Movement Monitoring |
| Major Project Control | Boundary Setting Out |
| Foundation Setting Out | Grid Networks |





TERRESTRIAL AND AERIAL PHOTOGRAMMETRY



Terrestrial and Aerial photogrammetry is the art, science and technology for obtaining reliable information and measurements from photographs.

To create these maps or 3D models a high detail camera is mounted on a drone. Multiple overlapping photographs of the ground are taken as the drone flies along an autonomous programmed flight path limited by the boundary waypoints.



Each construction site has a unique set of conditions that will determine which survey technique should be used. When using a drone for photogrammetry surveys it could have the following benefits:

- ◆ It is a very cost effective method for mapping large open areas
- ◆ It can be used as a very safe method of survey practice. It is safer to take photographs of a dangerous area rather than to place a surveyor in harm's way
- ◆ It enables the survey team the ability to map areas inaccessible to a conventional field crew
- ◆ It provides a photographic record of the site and the site conditions.



At CD Surveys, we can offer many different services using our DJI Phantom 4 drone, all of which are aimed at giving our clients the best product possible at a very affordable price.

Locations

SURREY OFFICE

CD Surveys Ltd
Pentire - Stable 1
Fordbridge Road
Sunbury on Thames
Middlesex
TW16 6AX

Email: sunbury@cdsurveys.com
Tel: +44 (0)1932 761196



KENT OFFICE

CD Surveys Ltd
Aspen House
13 Highpoint Business Village
Ashford
Kent
TN24 8DH

Email: kent@cdsurveys.com
Tel: +44 (0)1233 227919



HAMPSHIRE OFFICE

CD Surveys Ltd
12 Woodside
Blackwater
Hampshire
GU17 9JJ

Email: camberley@cdsurveys.com

Quotations

Follow us



For our team to provide you with a quotation for your surveying or engineering needs, we require the following information by email or post:

Service required, Site address and location, Photos, maps and/or plans with required survey area boundary marked appropriately where possible.

Accreditations we are proud of....

