



Complete Warehouse Storage Solutions

[www.ikonltd.co.uk](http://www.ikonltd.co.uk)

# Design, manufacture and installation service.

We're not just another storage solution company and unlike most, we take pride in our customer service & aftercare solutions. We offer a wide range of services from initial consultation and design all the way through to installation, repairs & maintenance. Get in touch now to discuss your requirements.

## What's involved?

### Free Consultation

Get in touch to arrange a time and date for us to come and visit you. We will take a detailed survey of your site and will get to know exactly what you need from your storage space.

### Bespoke CAD Design

From there we will develop a design plan of the storage solution that we both agree is best for your business. Once you're happy the manufacturing stage can begin.

### Manufacture & Installation

The exciting part, installation! We will arrange a date and time that suits you to deliver and install your brand new storage system. We can then discuss our aftercare services.

Call us now to discuss your bespoke storage solutions with our design team.



Safe contractor approved



All installers are SEIRS qualified

# How It Works

Step 1

## Free Consultation

Get in touch and we will arrange a time and date to come and visit you. We will take a detailed survey of your site and will get to know exactly what you need.

Step 4

## Manufacture

Once we have the go-ahead we will start the manufacture of your bespoke storage solution. We will keep you in the loop to ensure the process is as easy as possible.

Step 2

## Design

From there we will develop a CAD design plan of the storage solution that we both agree is best for your business requirements.

Step 5

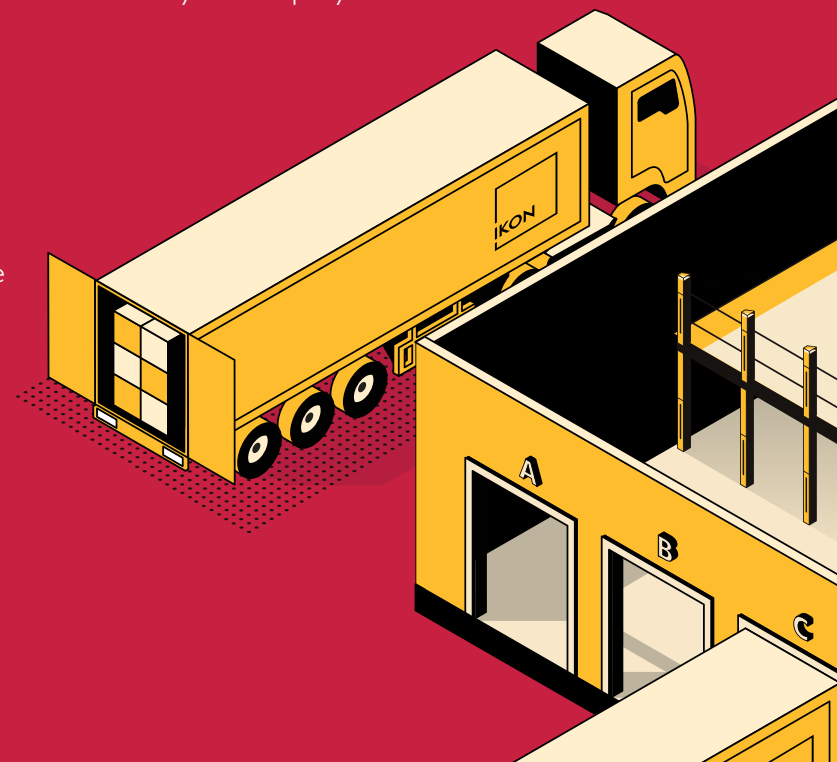
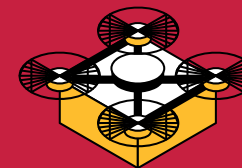
## Delivery & Installation

The exciting part, installation! We will arrange a date and time that suits you to deliver and install your brand new storage system. We can then discuss our aftercare services.

Step 3

## Quotation

We will develop a comprehensive, competitive quote from where you can make an informed decision on the best choice for your company.





FREE CAD DESIGN



FREE ON-SITE CONSULTATION

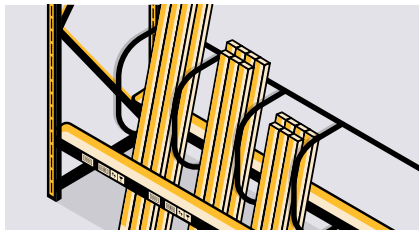
# Pallet Racking Systems

New and used pallet racking systems.

Our Pallet Racking solutions are designed around your storage needs. Our dedicated design team will advise on the racking system that best suits your requirements. We offer all types of racking systems including Adjustable Racking, Drive-In, Narrow Aisle and Wide Aisle.

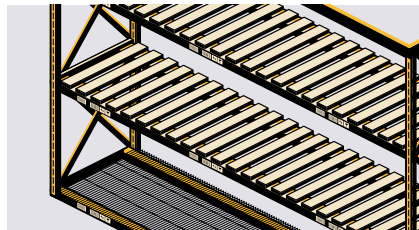
## Pallet Racking Accessories

We've got a wide variety of Pallet Racking accessories to help make your workplace safe and efficient. Here is just a small selection...



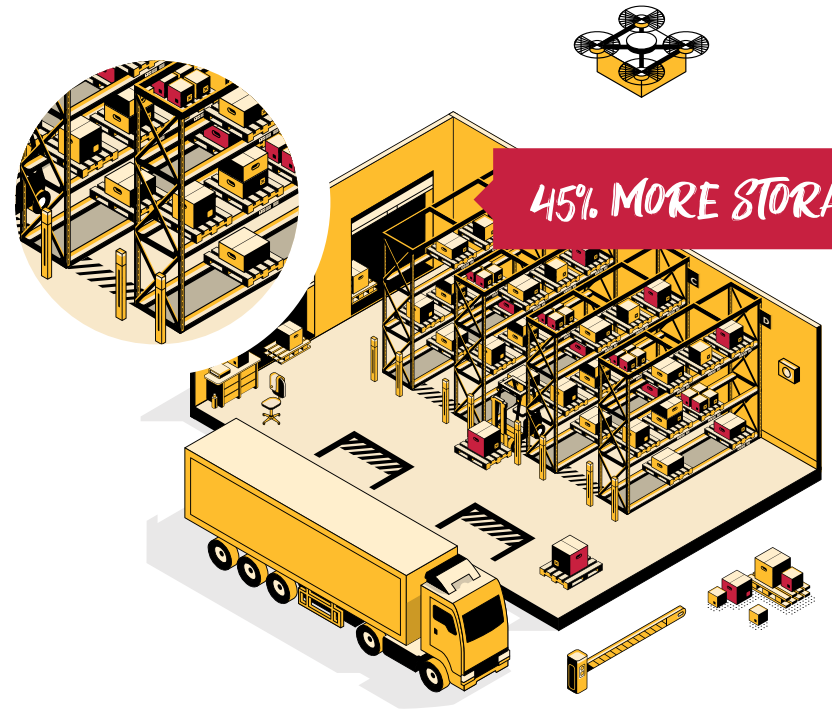
### 'D' Bar Racks

Store and separate tall items on your Pallet Racking system with bar racks. Get in touch to order today.



### Mesh & Timber Decks





We offer both Mesh Decks & Timber Decks, ideal for storing cartons and irregular sized goods.

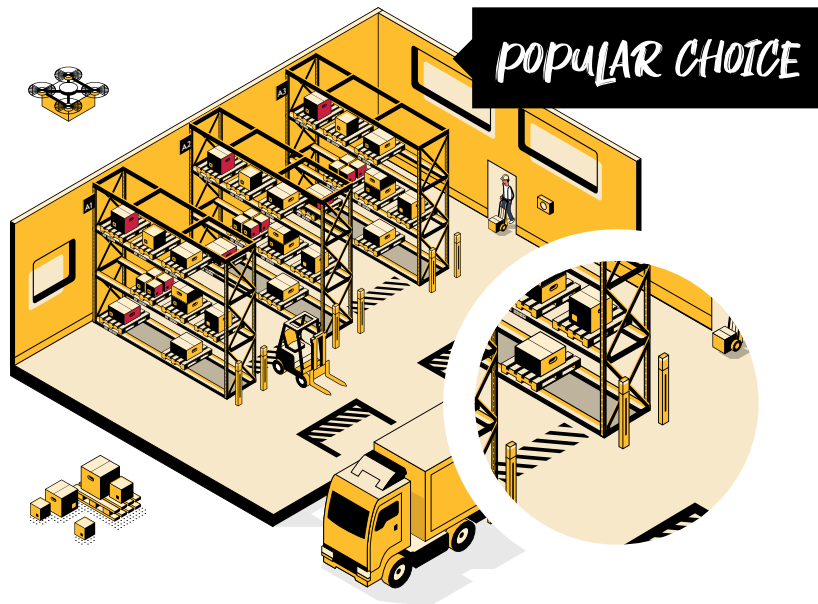


## Narrow Aisle

Narrow Aisle adjustable pallet racking is a popular choice of racking system due to its rugged and easily adjustable design. This easily accessible system is adaptable to your needs and can hold loads of up to 35 tonnes.

### Features & Benefits

-  Increase storage space by up to 50%.
-  100% Accessibility.
-  Suitable for rigorous environments.
-  CAD design tailored to your requirements.



## Wide Aisle

Wide Aisle pallet racking systems provide your warehouse operatives with open access to product loads at all times. Perfect for all kinds of pallets, Wide Aisle racking can be designed to fit into any warehouse space.

### Features & Benefits

- ✓ Great fit for every warehouse.
- ✓ Increase storage space by up to 50%.
- ✓ Suitable for all truck types.
- ✓ CAD design tailored to your requirements.



## Drive-In

This compact, high-density storage solution can free-up as much as 90% of unused, existing floor space. This revolutionary racking system is great for storing large quantities of similar loads, meaning you'll reduce loading and unloading times and increase efficiency.

### Features & Benefits

- ✓ First in last out principle.
- ✓ Increase storage space by up to 50%.
- ✓ Perfect for seasonal goods.
- ✓ CAD design tailored to your requirements.



FREE CAD DESIGN



FREE ON-SITE CONSULTATION

# Shelving Solutions

We offer bespoke shelving solutions designed and manufactured with your business in mind. We have solutions that will suit all storage requirements and thanks to our in-house design team we can collaborate to get the best out of your warehouse space for a cost-effective price.

Available from stock or tailored to your needs...



## Longspan & Multi-Tier

Longspan and Multi-Tier Shelving provide a great, cost-effective solution for all types of storage needs.



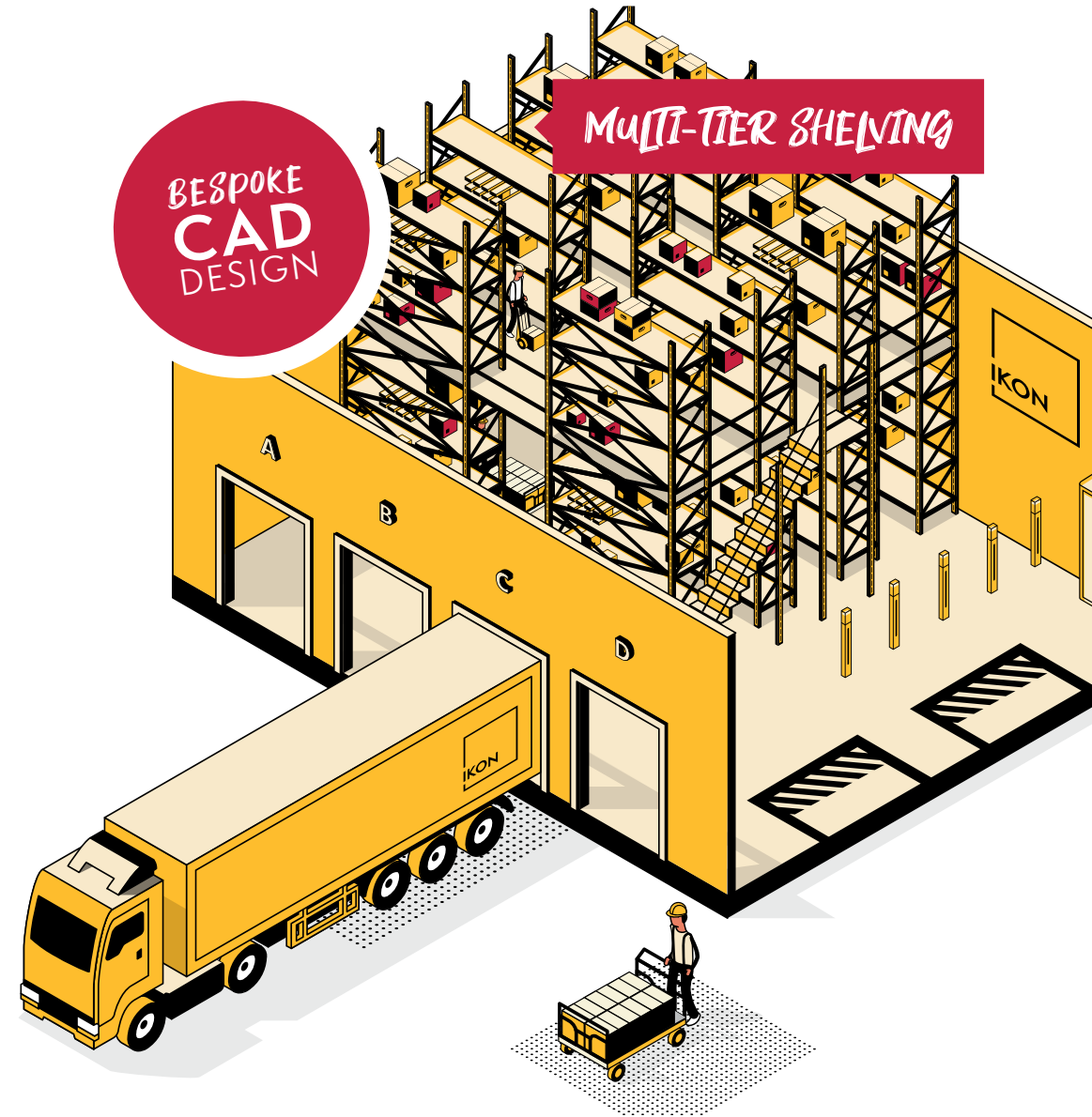
## Carton Live Shelving

This live storage feed is made up of roller racks that feed goods from higher levels through to pickers at lower levels.



## Mobile Shelving

Mobile Shelving units move along tracks by the use of a hand-wheel, creating aisles as and when you need them - saving valuable floor space.



Suitable for rigorous environments.



CAD design tailored to your requirements.



Available in a range of sizes and colours.

# Cantilever Racking

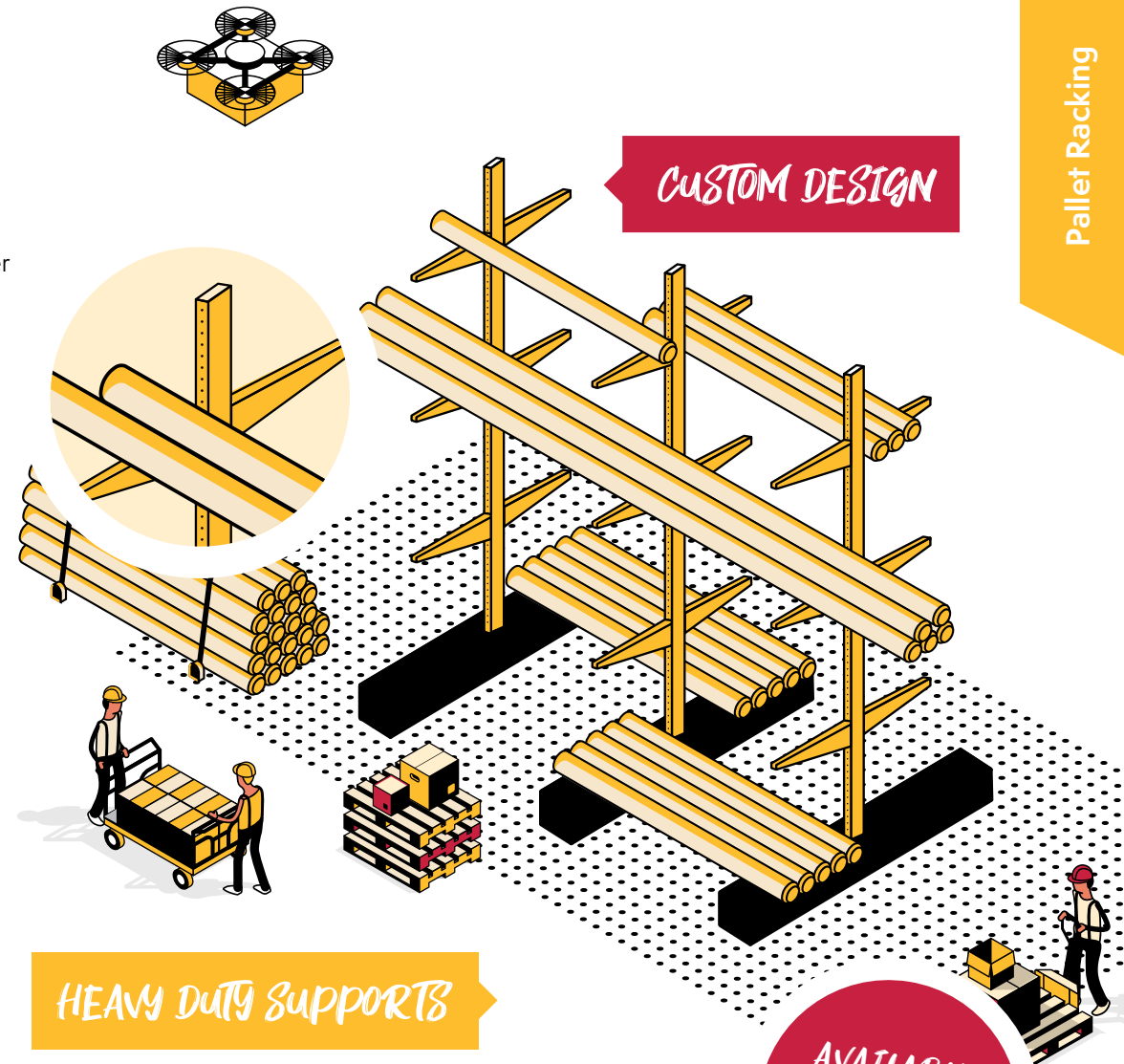
Our Cantilever Racking Systems are manufactured in the UK from heavy-duty, hot-rolled structural steel sections, which make them very robust and able to withstand the most arduous industrial environments. IKON Cantilever Racking Systems offer a cost-effective and efficient storage solution.

**CAD Designs tailored to suit your requirements...**

## Ideal for storing...

- ✓ Aluminium sheets and plates
- ✓ Heavy pipes or tubes
- ✓ Timber packs
- ✓ Scrap vehicles
- ✓ Panels
- ✓ Steel sections
- ✓ Raw materials
- ✓ Extrusion
- ✓ Worktops & laminates
- ✓ Concrete & sheet lintels

**Call us now to discuss your requirements...**



AVAILABLE FROM STOCK

✓ CAD design tailored to your requirements.

✓ Suitable for rigorous environments.

✓ Cladded Cantilever designs available.

# Bespoke Mezzanines

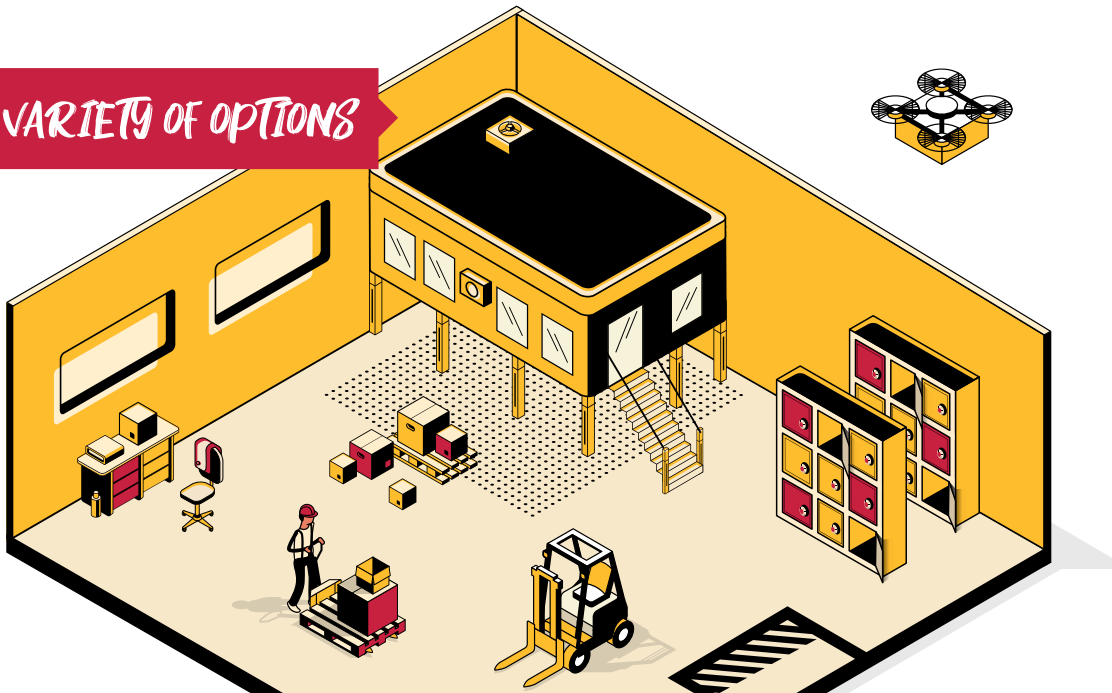
Designed and built to the highest standards, our Mezzanine Flooring solutions are a great way of adding much-needed floor space. We provide a complete service from initial design and consultation through to delivery and installation.

## Warehouse Mezzanines

IKON Mezzanine systems are a proven, cost-effective way of utilising otherwise lost warehouse space. Couple our Mezzanine systems with intelligently designed racking storage and increase your warehouse efficiency, storage capability and floor space at the fraction of the cost of warehouse expansion or relocation.

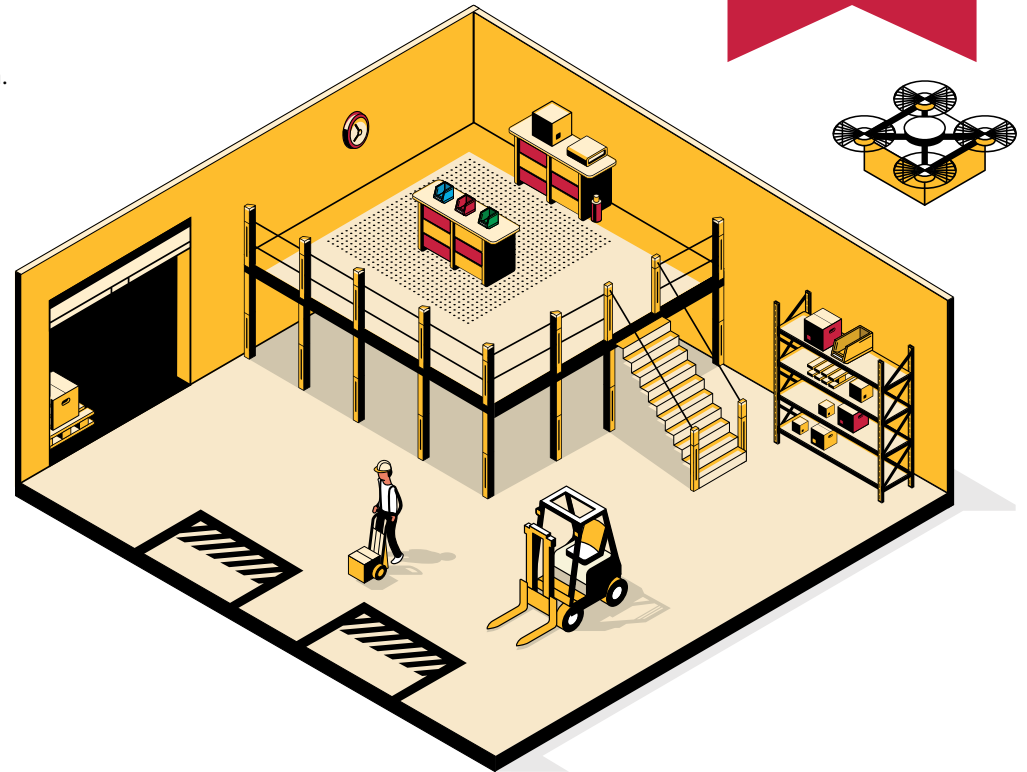
- ✓ Certified and guaranteed.
- ✓ Easily customisable to suit your needs.
- ✓ Suitable for rigorous environments.

VARIETY OF OPTIONS



COST EFFICIENT

FREE  
CONSULTATION



## Office Mezzanines

Our impressive Office Mezzanine systems are tailored to your requirements and are designed to integrate flawlessly with your current office style and architecture - at the fraction of the cost of relocation or expansion efforts.

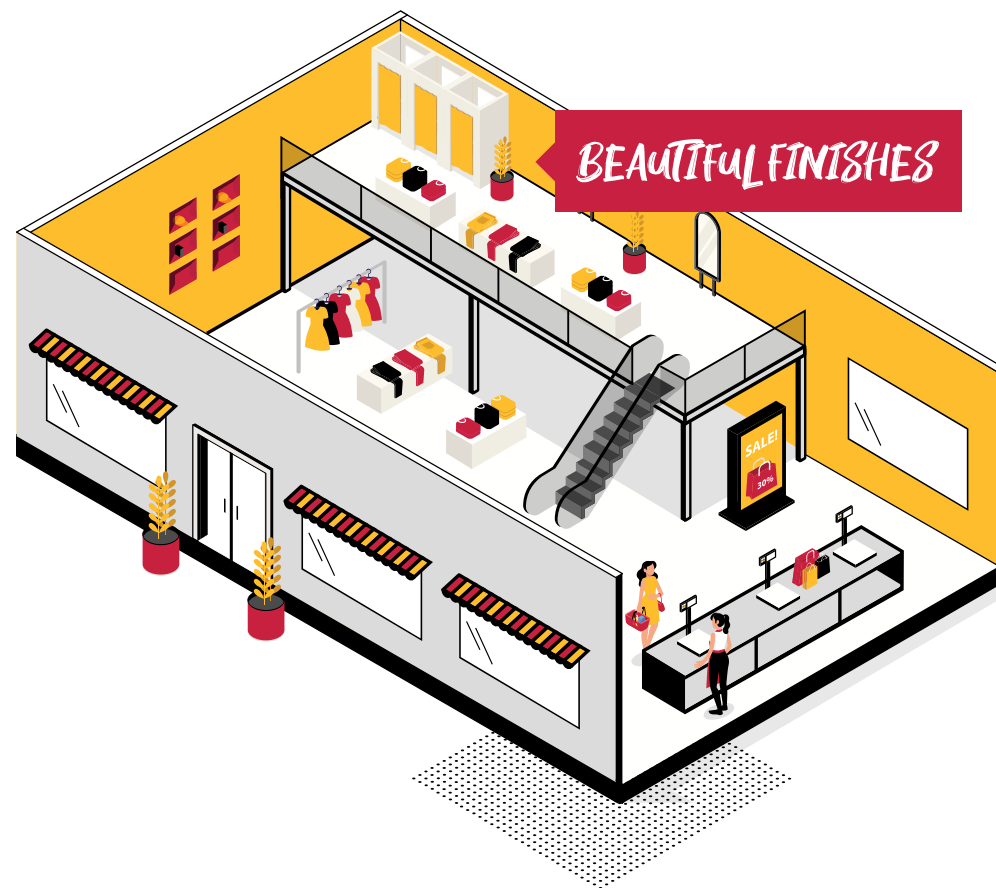
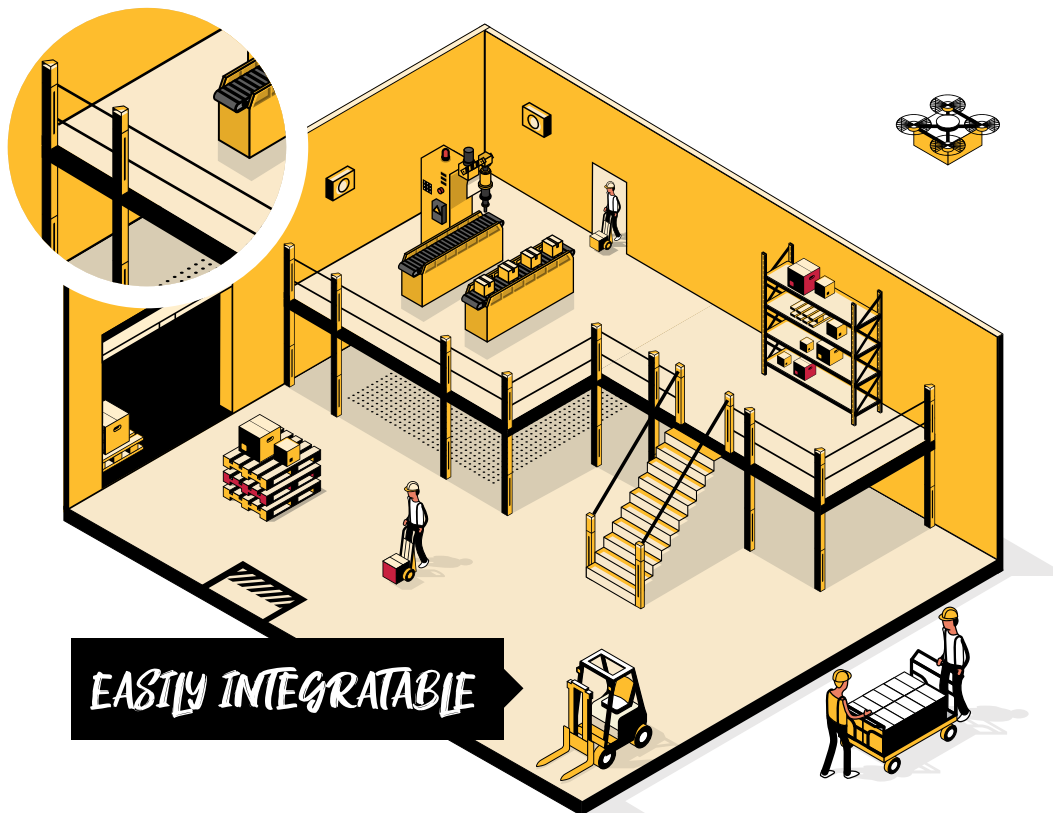
- ✓ Create a dedicated office space.
- ✓ Easily customisable to suit your needs.
- ✓ Suitable for warehouse environments.



## Retail Mezzanines

Retail Mezzanine systems are devised to fit seamlessly into your current retail location. Designed to add much-needed floor space to showcase your products or to add storage space for stock, our Retail Mezzanines are tailored to your requirements - helping to create a beautiful and functional retail space.

- ✓ Create beautiful, welcoming entrances.
- ✓ Bespoke CAD design.
- ✓ Increase shop floor space by up to 50%.



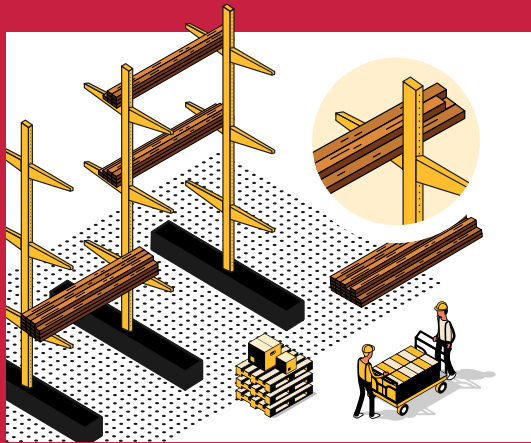
## Production Mezzanines

Designed with your factory production line in mind, our Mezzanine floors are designed to accommodate all kinds of factory operations. IKON Production Mezzanine systems are devised to fit seamlessly into your current working operations and can be used to add more space for office use or working production lines.

- ✓ Robust design for all environments.
- ✓ Easily integratable.
- ✓ Suitable for rigorous environments.

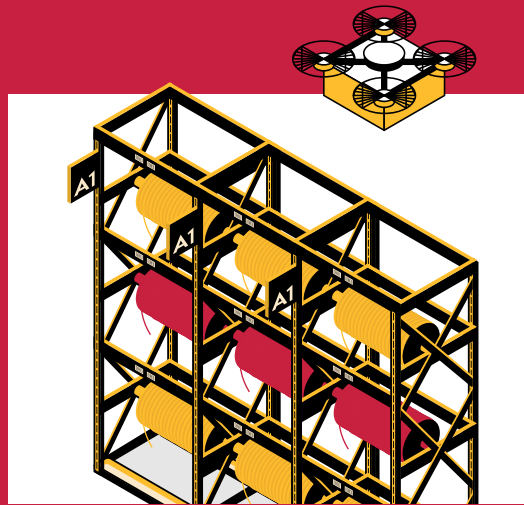
**ENQUIRE NOW!** 01773 718 719

# Who we work alongside...



## Builders & Timber Merchants

We work closely with builders merchants and DIY stores to provide bespoke storage solutions from shop shelving to heavy-duty Pallet and Cantilever Racking. We will develop an efficient storage solution for your business.



## Electrical Stores & Engineering

Our team has specialised in the design of functional warehouse spaces of well known electrical retailers and engineering firms to create storage solutions tailored to their needs. Get in touch today!



## Plumbing Merchants

We work with plumbers merchants in the creation of tailored storage solutions and trade counters. We design and manufacture storage solutions for copper fixings, radiators pipe storage and trade counter areas.

Don't worry, we don't stop there. Our design team are on hand to help with projects in all sectors and with businesses both large and small. Get in touch now to discuss your requirements.



## Breakers Yards

We've worked alongside breakers yards across the UK to develop robust, functional and efficient storage solutions. All of which are CAD designed and tailored to your requirements.



## Logistics & Warehouses

We specialise in the design, manufacture and installation of bespoke storage solutions for logistic depots and warehouses up and down the country. Contact us to discuss your requirements.



## Manufacturing Plants

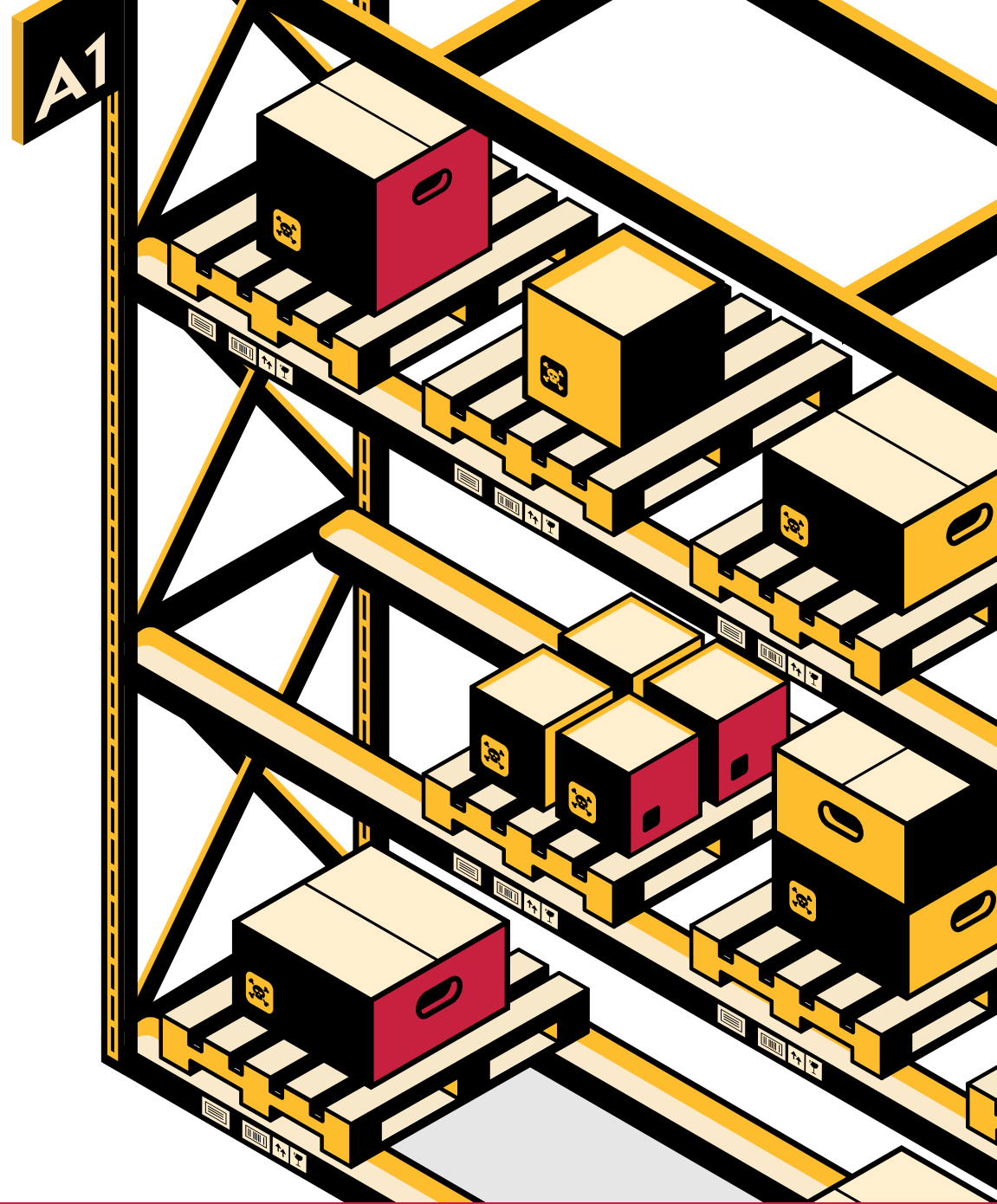
Our team here at IKON will help you to create a working environment that integrates seamlessly within your business. Get in touch with us now to discuss your storage requirements.

# Product and Aisle Labelling

We cover a large range of labelling solutions from pallet racking labels through to industrial tags and thermal printers - we've got it all. Our labelling products will aid your team and help your warehouse floor to become a more efficient workplace. IKON labelling solutions include pallet racking labels, warehouse shelf labels, floor location labels and more...

- ✓ Racking location labels.
- ✓ Warehouse shelf labels.
- ✓ Barcode labels.
- ✓ Floor location labels.
- ✓ Hazard warning labels.
- ✓ Plain and pre-printed self-adhesive labels.

Call 01773 718 719 to discuss your requirements...



Improve warehouse efficiency.



Improve picking times.



Warehouse label printers available.

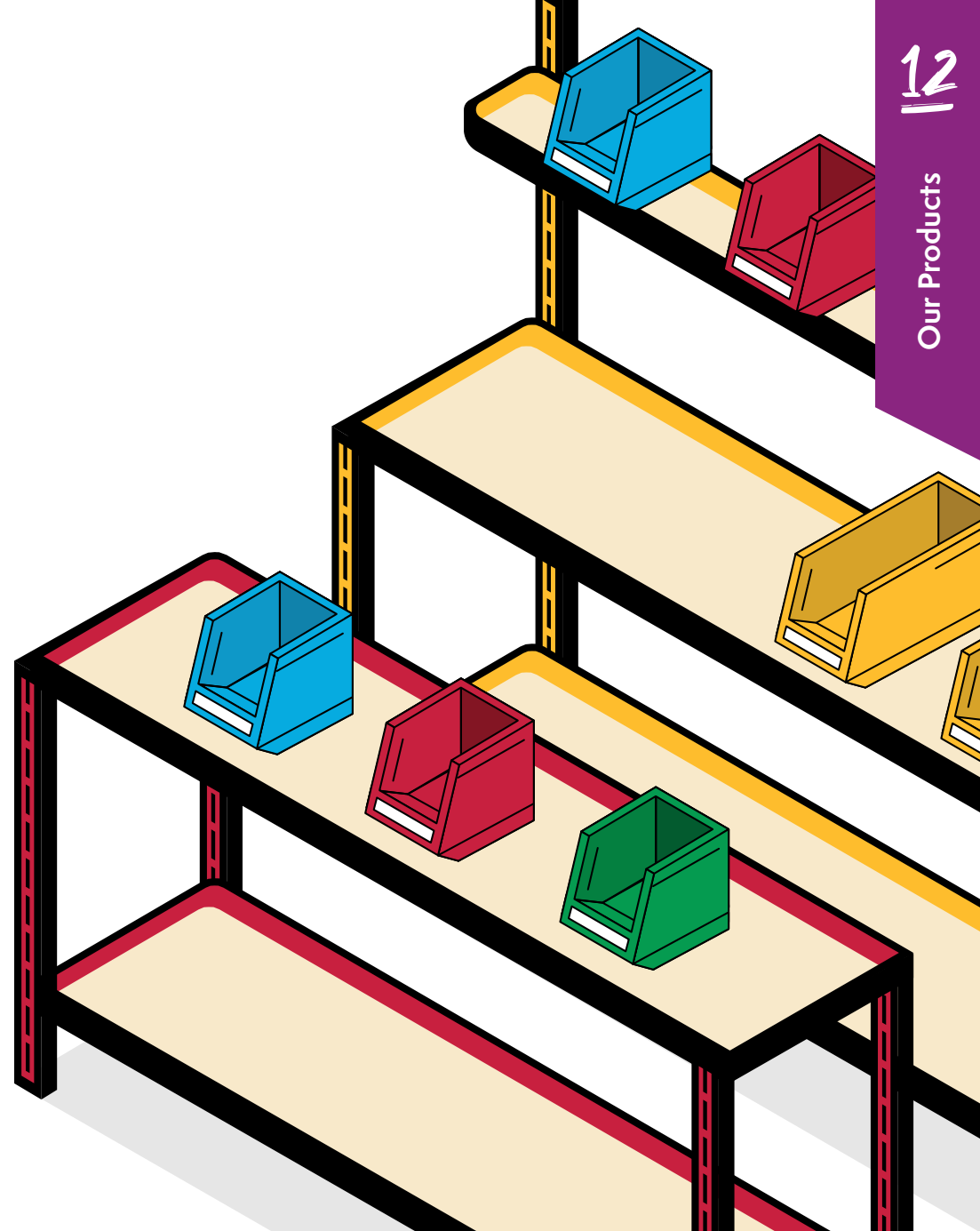
# Small parts bins

Perfect for industrial use, these robust, shock-proof plastic bins are the ideal solution to your busy packing and production areas. Their unique large open picking face means they are perfect for warehouses or production lines with high-picking numbers as contents are quickly identified and can be picked at ease with the large open-face design.

Call 01773 718 719 to discuss your requirements...

Bin Code	W x D x H (mm)	Load (kg)	Available Colours
ARTB05	106 x 106 x 49	1.5	Red, Yellow, Blue
ARTB10	106 x 136 x 76	2.5	Red, Yellow, Blue, Grey
ARTB20	106 x 187 x 76	3.5	Red, Yellow, Blue, Grey
ARTB25	140 x 205 x 127	6.5	Red, Yellow, Blue, Grey
ARTB30	140 x 274 x 127	10	Red, Yellow, Blue, Grey
ARTB40	210 x 375 x 179	20	Red, Yellow, Blue, Grey
ARTB50	280 x 457 x 254	25	Red, Yellow, Blue, Grey
ARTB60	415 x 375 x 179	22	Blue
ARTB70	415 x 460 x 292	40	Blue

Other size and colours are available on request.



Suitable for rigorous environments.



Ideal for manufacturing, small part picking and high density storage.



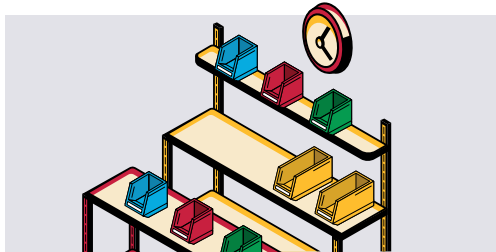
Available in a range of colours.

# Our Best Sellers

Here at IKON, we don't just stop at our storage solutions. We offer a huge variety of products from Pallet Racking Barriers to through to Office Furniture all to help you kit out your warehouse, shop or office with state-of-the-art facilities.

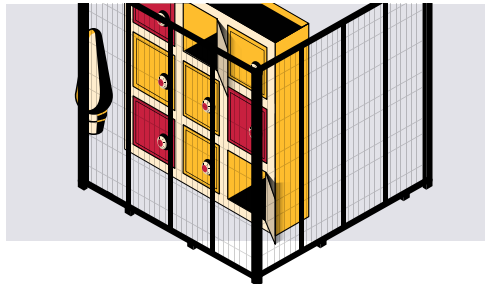
**Call 01773 718 719 or email [sales@ikonltd.co.uk](mailto:sales@ikonltd.co.uk) to order now...**

## Small Parts Bins



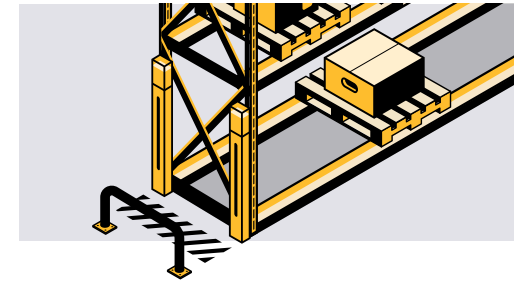
Perfect for industrial use, our robust, shock-proof plastic bins are the solution to your busy packing and production areas.

## Mesh Partitioning



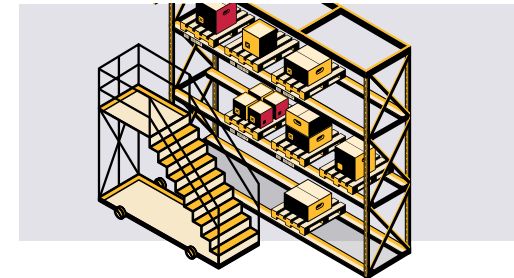
Great for the protection of valuable goods and creating open, safe and light working areas in busy working environments.

## Racking Barriers



Protect your brand new Pallet Racking system with our heavy-duty Pallet Racking Barriers and Upright Safety Guards. Contact us to place your order.

## Mobile Safety Steps



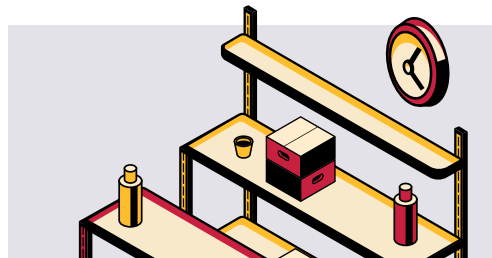
A warehouse must-have. We have a wide range of mobile steps available that are suitable for all warehouse environments.

## Lockers



Keep valuable stock safe or use our Lockers as part of a new workplace security system. Available in a variety of colours and specifications to suit.

## Workbenches



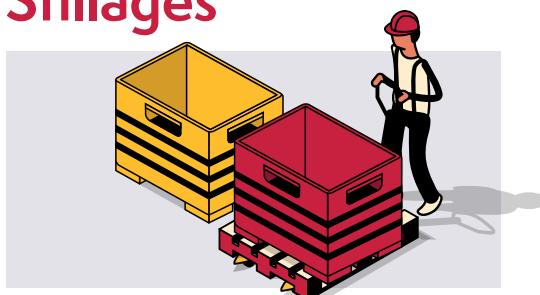
Perfect for rigorous working conditions. These robust workbenches come in all shapes and sizes and are perfect for production lines and warehouses.

## Pallet Trucks



Make moving pallets easy with these simple to use manual Pallet Trucks. Built using a strong steel profile construction, with both hand and foot operating levers.

## Stillages



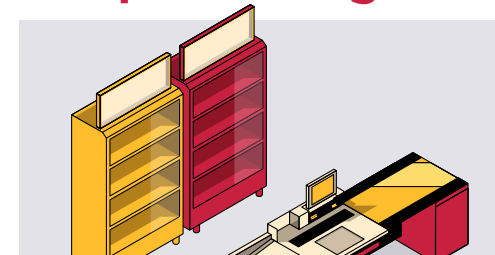
Our stillages are available in a range of materials and sizes to ensure the safe storage of products. Maximise transportable loads and reduce load and unload times.

## Office Furniture



We offer a huge range of office furniture from computer desks through to steel cupboards and lockers. Get in touch to discuss your requirements.

## Shop Shelving



Our shop shelving range is perfect for all types of stores. Available in a huge variety of colours and finishes, we are sure you will find something that will suit your store beautifully.



## A Bit About Us

Built on a solid foundation of years of industry experience, IKON is the perfect partner to help you find the best storage solution for your business. Our team of industry professionals will go the extra mile to ensure complete satisfaction, whether that's with a product purchased on [ikonltd.co.uk](http://ikonltd.co.uk) or our tailored warehouse design service. Our industry experience allows you to sit back knowing you're in capable hands.



[www.ikonltd.co.uk](http://www.ikonltd.co.uk)



[sales@ikonltd.co.uk](mailto:sales@ikonltd.co.uk)



01773 718 719