

WINTERS



Since
1953

We're There.



Metal & Mining Products



PPC Process Gauge

The PPC is a durable gauge with a phenolic solid front and pressure relief back safety case. Use the PPC in situations where user safety is a must such as in the presence of contaminated media.

Dial Size	4.5"
Case	Black phenolic with pressure relief back, solid front, integral back flange
Accuracy	±0.5% ANSI/ASME Grade 2A
Range	Vac to 20,000 psi
Connection	1/4" or 1/2" NPT bottom or back, brass* or SS
Warranty	5 years



PPC-ZR StabiliZR™ Process Gauge

The PPC-ZR StabiliZR™ gauge dampens movement and minimizes the effects of pulsation and vibration without liquid filling. Ideal for processes where chemical compatibility and vibration are a concern.

Dial Size	4.5"
Case	Black phenolic with pressure relief back, solid front, integral back flange
Accuracy	±0.5% ANSI/ASME Grade 2A
Range	Vac to 20,000 psi
Connection	1/4" or 1/2" NPT bottom or back, brass* or SS
Warranty	5 years



PFQ Premium Stainless Steel Liquid Filled Gauge

This gauge features a pulsation resistant, liquid filled stainless steel case with either brass or stainless steel internals. Ideal for use outdoors or in severe ambient and process conditions.

Dial Size	2.5", 4", 4.5" or 6", panel mount
Case	AISI 304 SS
Accuracy	2.5": ±1.5%, 4", 4.5", 6": ±1% ANSI/ASME Grade 1A
Range	Vac to 40,000 psi
Connection	1/4" or 1/2" NPT bottom, centre and lower back, 1/2" BSP(G) or 9/16" autoclavable, brass* or SS
Warranty	5 years



PFQ-ZR Premium Stainless Steel StabiliZR™ Gauge

PFQ-ZR utilizes a precision designed dampening mechanism to minimize the effects of pulsation and vibration. The gauge is suited for applications where corrosiveness and pulsation are a concern.

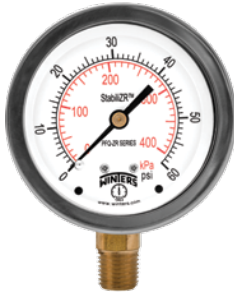
Dial Size	2.5", 4" or 6"
Case	AISI 304 SS
Accuracy	2.5": ±1.5% of full scale, 4" and 6": ±1% ANSI/ASME Grade 1A
Range	Vac to 20,000 psi
Connection	2.5": 1/4" NPT, 4" and 6": 1/4" or 1/2" NPT, SS
Warranty	5 years



PFQ Stainless Steel Liquid Filled Gauge

PFQ is a durable stainless steel gauge that can withstand pulsation and vibration, making it an ideal choice for pumps, compressors and motors operating in harsh environments.

Dial Size	1.5", 2", 2.5" or 4"
Case	AISI 304 SS
Accuracy	1.5" and 2": ±2.5% of full scale, 2.5" and 4": ±1.5% of full scale
Range	Vac to 15,000 psi
Connection	1/8", 1/4" and 1/2" NPT bottom or back or 7/16"-20 SAE bottom, brass*, lead free brass* or SS
Warranty	5 years



PFQ-ZR StabilizR™ Stainless Steel Gauge

PFQ-ZR's dry StabilizR™ dampening can withstand pulsation and vibration, making it an ideal choice for pumps, compressors and motors operating in harsh environments.

Dial Size	2.5" or 4"
Case	304 SS
Accuracy	±1.5% of full scale
Range	Vac to 15,000 psi
Connection	1/4" and 1/2" NPT bottom or back, brass*
Warranty	5 years



PBC Forged Brass Case Gauge

Featuring an easy-to-read dial and one piece forged brass case, the PBC was designed for severe service high vibration industrial and hydraulic systems.

Dial Size	2.5" or 4"
Case	Forged brass
Accuracy	2.5": ±1.5% of full scale, 4": ±1% ANSI/ASME Grade 1A
Range	Vac to 10,000 psi
Connection	1/4" or 1/2" NPT bottom or back, brass*
Warranty	5 years



PSC Safety Case Gauge

Winters' PSC Safety Case gauge is constructed of a solid front and blowout back for the ultimate in gauge safety. PSC has full rotary movement and micrometer pointer for ease of calibration.

Dial Size	2.5", 4", 4.5" or 6"
Case	304 SS with blowout back
Accuracy	2.5": ±1.5%, 4" and 6": ±1% ANSI/ASME Grade 1A, 4.5": ±0.5% ANSI/ASME Grade 2A
Range	Vac to 20,000 psi
Connection	1/4" or 1/2" NPT bottom or back, SS
Warranty	5 years



PTS Tube Stub Gauge

The PTS is designed to be used with most standard double ferrule tube fittings such as Parker A-Lok®. The ability to orient the gauge 360° during installation makes it ideal where gauge alignment is critical.

Dial Size	2.5"
Case	304 SS
Accuracy	±1.5% of full scale
Range	Vac to 5,000 psi
Connection	1/4" Tube Stub bottom, SS
Warranty	5 years



PDT Differential Gauge

This gauge uses brass or stainless steel wetted parts and is available with conventional or balanced scales. The PDT is typically used to measure pressure drops across filters, pumps or other equipment.

Dial Size	4.5" or 6"
Case	Aluminum, painted black
Accuracy	±1% ANSI/ASME Grade 1A
Range	0 to 600 psi
Connection	1/4" NPT bottom or back, brass* or SS
Warranty	5 years

Metal & Mining Product Selection

High Static Pressure Differential Gauges (PPD, PRD, PSD, PVD)

Winters' high static differential pressure gauges utilize four types of sensing elements for a large variety of ranges and are available with switches for actuation. Perfect for filtration systems and leak detection.



Dial Size	2.5", 3.5" or 4.5" (depending on series)
Case	Aluminum or engineered plastic (depending on series)
Accuracy	±2% of full scale or ±5% of full scale (depending on series)
Range	5" H ₂ O to 110 psid
Connection	1/4" or 1/2" NPT or 7/16"-20 SAE (may contain brass*)
Warranty	5 years

PDX Duplex Gauge

The PDX is a heavy duty, highly accurate gauge that uses two separate bourdon tubes and pointers to compare two separate process pressures at the same time.



Dial Size	4.5" or 6"
Case	Aluminum, painted black
Accuracy	±1% ANSI/ASME Grade 1A
Range	0 to 600 psi
Connection	1/4" NPT bottom or back, brass* or SS
Warranty	5 years

DPG Digital Pressure Gauge

DPG is a simple to use digital pressure gauge with stainless steel wetted parts including a 316L welded diaphragm. It is ideal for test measurement and general purpose commercial and industrial applications.



Dial Size	2.5"
Case	ABS (IP60) with a protective silicone rubber boot.
Accuracy	±1% (±0.5% optional for gauges up to 5,000 psi)
Range	Vac to 15,000 psi
Connection	1/4" NPT bottom, SS
Warranty	5 years

LIS Intrinsically Safe Transmitter

The LIS is a rugged stainless steel transmitter with a ceramic sensor and has an accuracy of ±0.5% FSO. It is available in a wide range of mechanical and electrical connections and is approved for outdoor use.



Output	2-wire 4-20 mA, 3-wire 0-10 V
Housing	316L SS
Accuracy	±0.5% FSO
Range	Vac to 8,700 psi
Sensor	Ceramic
Warranty	5 years

LXP Explosion Proof Transmitter

LXP features a NEMA 4X, 7 or 9 explosion proof enclosure and cULus approval. It is suitable for a variety of hazardous applications where the added security of an explosion proof enclosure is required.



Output	2-wire 4-20 mA, 3-wire 1-11 V
Housing	304 SS
Accuracy	±0.25% BFSL / ±0.5% for vacuum only
Range	Vac to 10,000 psi
Sensor	Silicone
Warranty	5 years



3WPS Industrial Pressure Switch

The 3WPS is a piston-type pressure switch with simple set point adjustment and SPDT snap action. It is designed for use with pumps and compressors and general industrial applications.

Housing	Anodized aluminum
Wetted Parts	Aluminum and Buna-N (PTFE O-ring or Viton® diaphragm optional)
Range	0.5 to 1,600 psi
No. of Contacts	One, SPDT (hermetically sealed option available)
Accuracy	±2% of the adjustable range
Warranty	5 years



9WPS Explosion Proof Compact Pressure Switch

9WPS has an internal adjustment wheel with built in locking set-screws and is safe to adjust during operation. It is suitable for use in safety panels with pumps, compressors, turbines and other applications.

Housing	316 SS
Wetted Parts	SS process connection and 316 SS diaphragm
Range	Vac to 15,000 psi
No. of Contacts	1 x SPDT (2 x SPDT optional) (hermetically sealed option for 1 x SPDT only)
Accuracy	±2% of full scale
Warranty	5 years



D40 Medium Duty Diaphragm Seal

This compact lightweight diaphragm seal is ideally suited for applications where space limitations exist. This diaphragm seal is primarily utilized to protect gauges and transmitters from corrosive media.

Housing	AISI 316 SS
Diaphragm	AISI 316L SS, welded
Min. Pressure	15 psi
Max. Pressure	1,000 psi
Connection	1/4" or 1/2" NPTF or NPTM
Warranty	5 years



D44 Flanged Diaphragm Seal

D44 series two-piece flanged diaphragm seal is available in a variety of sizes and housing materials. A backing plate prevents the diaphragm from rupturing if the pressure sensing instrument fails.

Upper Housing	Nickel plated carbon steel, 316 SS
Lower Housing	316 SS, Hastelloy® B & C, Monel®, PTFE, other
Diaphragm	PTFE for increased compatibility, sensitivity and versatility
Min/Max Pres.	0-2,500 psi
Connection	1/4" or 1/2" NPTF
Process Flange	1", 1.5" or 2" and #150 or #300 pressure rating



D70 Heavy Duty 2-Piece Industrial Diaphragm Seal

The D70 is found in applications where process fluids are corrosive or viscous and could damage instrumentation. An optional flushing connection is available to prevent clogging of the seal.

Housing	316L SS, Monel®, Hastelloy® C
Diaphragm	316L SS, Monel®, Hastelloy® C, FKM
Min. Pressure	30 psi
Max. Pressure	2,500 psi
Connection	1/4", 1/2", 3/4" or 1" NPTF bottom, 1/4" or 1/2" NPTF top
Warranty	5 years



D81 Isolation Ring

D81 is an in-line diaphragm seal that is available in a variety of configurations to fit specific applications. The wafer style isolation ring makes the D81 ideal for measuring the pressure of viscous or solid media.

Housing	Carbon Steel, 316 SS, Acetal, others available
Diaphragm	Neoprene, Nitrile, EPDM, FKM or Hypalon®
Min. Pressure	Vacuum
Max. Pressure	1,000 psi
Connection	1/4" or 1/2" NPTF gauge ports, 1"-48" pipe sizes, (consult factory for larger sizes)
Warranty	5 years

*Tee fitting also available



NVA Needle Valve

NVA Needle Valves come in straight, angle body or multiport, hard or soft seat, carbon or stainless steel with a NACE option. They provide excellent flow regulation and are leak tight.

Body	Carbon steel or stainless steel with or without NACE
Seat	Hard or soft seat
Max. Pressure	6,000 or 10,000 psi
Connection	1/4", 3/8", 1/2", 3/4" and 1" NPTF and NPTM connection options
Warranty	5 years



BBV Block & Bleed Valve

Block & Bleed Valves are available as single handle, two handle or double block and bleed, hard or soft seat, carbon or stainless steel with a NACE option. They are ideal for industrial applications.

Body	Carbon steel or stainless steel with or without NACE
Seat	Hard or soft seat
Max. Pressure	6,000 or 10,000 psi
Connection	1/4" and 1/2" NPTF and NPTM connection options
Warranty	5 years



SCT Cooling Tower

The SCT has a perforated case and spiral tubing that protects pressure gauges, switches and transmitters. It is used where process media temperature exceeds the rating of the instrument.

Socket/Tube	316L SS/316 SS
Max. Pressure	1,500 psi
Max. Temp	570°F or 932°F
Connection	1/4" NPTM x 1/4" NPTF or 1/2" NPTM x 1/2" NPTF
Warranty	5 years



SOP Overpressure Protector

SOP utilizes an external adjusting screw to automatically shut off pressure to an instrument once the adjustable pressure is exceeded. This overpressure protector is available in Bellows and piston types.

Body	316 SS with or without NACE
Burst	10,000 psi/kPa
Temperature	-40°F to 248°F (-40°C to 120°C)
Connection	1/4" NPTM x 1/4" NPTF or 1/2" NPTM x 1/2" NPTF
Warranty	5 years



TBM Bi-Metal Thermometer

This industrial grade thermometer uses a bi-metallic sensing element for reliable temperature readings. All models are hermetically sealed and fully moisture and water proof.

Dial Size	1" to 6"
Case	AISI 304 SS
Accuracy	±1% of full scale
Range	-100°F to 1,000°F (-70°C to 550°C)
Connection	1/4" or 1/2" NPT bottom, back or adjustable angle
Warranty	5 year



TRR Remote Reading Thermometer

TRRs are heavy duty gas or vapour filled thermometers for remote reading installations. This product is available for immediate delivery off-the-shelf and non-standard configurations are made-to-order.

Dial Size	2.5", 3.5", 4", 4.5", 6" or 8.5"
Case	2.5": 316 SS, 3.5" and 4": steel painted black, others are aluminum painted black
Accuracy	Gas ±1% of full scale value, Vapour ±2% of full scale value
Range	-40°F to 1,000°F (-40°C to 537°C)
Connection	1/2" bulb diameter, brass* or SS
Warranty	5 year



TBR Bi-Metal Threaded Thermowell

The TBR is standard in a "stepped construction" and available in a variety of custom configurations. Use to protect TBM thermometers from media or to allow for maintenance without shutting down a system.

Material	Brass*, 304 SS, 316 SS, other materials available upon request
Bore	0.260" standard
Length	2.5", 4", 6", 9", 12" or 15" and others
Process Connect.	3/4", 1/2" or 1" standard, other thread sizes available upon request
Therm. Connect.	1/2" NPTF, other thread sizes available upon request
Warranty	5 years




TWF Bi-Metal Thermowell

The TWF thermowell is designed for use on a closed system. It is used to protect thermometers from process media and to allow for thermometer replacement without requiring shut-down of the system.

Material	304 SS or 316 SS
Bore	0.260"
Length	4", 6", 9", 12" or 15" and others
Process Connect.	1", 1.5" or 2" flange and others
Therm. Connect.	1/2" NPT female
Warranty	5 years

A-Lok® is a registered trademark of Parker Hannifin Corporation
Hastelloy® is a registered trademark of Haynes International, Inc.

Hypalon® is a registered trademark of DuPont Performance Elastomers
Monel® is a registered trademark of Inco Alloys International

*  **WARNING:** This product can expose you to chemicals including lead, which is known to the State of California to cause cancer and birth defects or other reproductive harm. For more information go to www.P65Warnings.ca.gov.

WINTERS INSTRUMENTS

MANUFACTURER OF INDUSTRIAL INSTRUMENTATION



Winters Instruments is a global manufacturer of premium quality pressure and temperature instrumentation, with distribution partners in over 90 countries. Please contact us for your nearest Regional Manager.

Corporate - Canada

Winters Instruments
121 Rainside Road
Toronto, Ontario
M3A 1B2
Tel: 416-444-2345
1-800-WINTERS
Fax: 416-444-8979
sales@winters.com

Canada - Calgary

Winters Instruments
3125-16 Street NE
Calgary, Alberta
T2E 7K8
Tel: 403-723-6645
1-800-WINTERS
Fax: 403-723-6647
calgary@winters.com

USA - Houston

Winters Instruments
5400 W. Sam Houston Pkwy N.
Houston, Texas
77041
Tel: 281-880-8607
1-800-WINTERS
Fax: 281-880-8614
usasales@winters.com

USA - Buffalo

Winters Instruments
Airport Commerce Park
455 Cayuga Rd., Suite 650
Buffalo, New York
14225
Tel: 716-874-8700
1-800-WINTERS
Fax: 716-874-8800
usasales@winters.com

Asia - Shanghai

Winters Instruments
Shanghai WitHub Hi-Tech
Business Center Suite 308
No. 333 Hongqiao Road
Shanghai 200030 China
Tel: 86-21-6104-2610
Fax: 86-21-6104-2615
asiasales@winters.com
www.wintersasia.com

Latin America

Winters Instruments
Lamadrid 121
Los Troncos del Talar, B1608CEC
Buenos Aires, Argentina
Tel: 54-11-4715-3036
latinsales@winters.com
www.winters.com.ar

Europe - Middle East - Africa

Winters Instruments
Dubai Airport Free Zone
6WB G50
Dubai, United Arab Emirates
Tel: 971-4295-9177
Fax: 971-4295-9177
emeasales@winters.com



Distributed by: