

WINTERS



We're There.



WASTE WATER PRODUCTS



PPC Process Gauge

The PPC Series gauge is a durable gauge with a phenolic solid front and pressure relief back safety case. Use the PPC in situations where user safety is a must such as in the presence of contaminated media.

Dial Size	4.5"
Case	Black phenolic with pressure relief back, solid front, integral back flange
Accuracy	±0.5% ANSI/ASME Grade 2A
Range	Vac to 20,000 psi
Connection	1/4" or 1/2" NPT bottom or back, brass* or SS
Warranty	5 years



PPC-ZR StabilizR® Process Gauge

The PPC-ZR StabilizR® gauge dampens movement and minimizes the effects of pulsation and vibration without liquid filling. Ideal for processes where chemical compatibility and vibration are a concern.

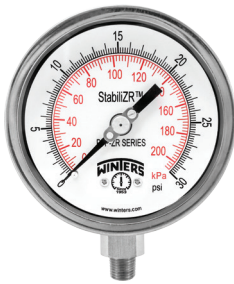
Dial Size	4.5"
Case	Black phenolic with pressure relief back, solid front, integral back flange
Accuracy	±0.5% ANSI/ASME Grade 2A
Range	Vac to 20,000 psi
Connection	1/4" or 1/2" NPT bottom or back, brass* or SS
Warranty	5 years



PFP Premium Stainless Steel Liquid Filled Gauge

This gauge features a pulsation resistant, liquid filled stainless steel case with either brass* or stainless steel internals. Ideal for use outdoors or in severe ambient and process conditions.

Dial Size	2.5", 4", 4.5" or 6", panel mount
Case	AISI 304 SS
Accuracy	2.5" ±1.5%, 4" to 6" ±1% ANSI/ASME Grade 1A
Range	Vac to 40,000 psi
Connection	1/4" and 1/2" NPT - bottom, centre and lower back, high pressure and 9/16"
Warranty	5 years



PFP-ZR Premium Stainless Steel StabilizR® Gauge

PFP-ZR utilizes a precision designed dampening mechanism to minimize the effects of pulsation and vibration. The gauge is suited for applications where corrosiveness and pulsation are a concern.

Dial Size	2.5", 4" or 6"
Case	AISI 304 SS
Accuracy	2.5" ±1.5% of full scale, 4" and 6" ±1% ANSI/ASME Grade 1A
Range	Vac to 20,000 psi
Connection	2.5": 1/4" NPT, 4" and 6": 1/4" or 1/2" NPT, SS
Warranty	5 years



PFQ Stainless Steel Liquid Filled Gauge

The PFQ Series gauge is a durable stainless steel gauge that can withstand pulsation and vibration, making it an ideal choice for pumps, compressors and motors operating in harsh environments.

Dial Size	1.5", 2", 2.5" or 4"
Case	AISI 304 SS
Accuracy	1.5" and 2" ±2.5% of full scale, 2.5" and 4" ±1.5% of full scale
Range	Vac to 15,000 psi
Connection	1/8", 1/4" and 1/2" NPT bottom or back or 7/16"-20 SAE bottom, brass* or SS
Warranty	5 years



PEC Premium Stainless Steel Gauge with Electrical Contacts

PEC is a premium gauge with independently adjustable electrical contacts rated up to 1 amp at 220-338 Vac. The gauge is installed in applications where electrical switching is required with local indication.

Dial Size	4"
Case	304 SS
Accuracy	±1%
Range	Vac to 10,000 psi
Connection	1/4" NPT bottom, SS
Warranty	5 years



PDT Differential Gauge

This gauge uses brass or stainless steel wetted parts and is available with conventional or balanced scales. The PDT is typically used to measure pressure drops across filters, pumps or other equipment.

Dial Size	4.5" or 6"
Case	Aluminum, painted black
Accuracy	±1% ANSI/ASME Grade 1A
Range	0 to 600 psi
Connection	1/4" NPT bottom or back, brass* or SS
Warranty	5 years



DPG Digital Pressure Gauge

DPG is a simple to use digital pressure gauge with stainless steel wetted parts including a 316L welded diaphragm. It is ideal for test measurement and general purpose commercial and industrial applications.

Dial Size	2.5"
Case	ABS (IP60) with a protective silicone rubber boot.
Accuracy	±1% (±0.5% optional for gauges up to 5,000 psi)
Range	Vac to 15,000 psi
Connection	1/4" NPT bottom, SS
Warranty	5 years



LE3 General Purpose Transmitter

LE3 is a compact general industry stainless steel transmitter suitable for outdoor use. Its wide variety of mechanical and electrical connections makes it ideal for pump and compressor monitoring.

Output	2-wire 4-20 mA
Housing	304 SS
Accuracy	±0.5% FSO
Range	Vac to 5,000 psi
Sensor	Ceramic
Warranty	5 years



LM1 Anti-Clogging Submersible Transmitter

LM1 is a submersible transmitter with a built-in anti-clogging device to resist damage from floating solids. It is internally protected against lightning and includes a dual seal for increased environmental durability.

Output	2-wire 4-20 mA
Housing	316L SS
Accuracy	±0.5% FSO (±0.25% FSO optional)
Range	5 to 25 psi (higher ranges also available)
Sensor	316L
Warranty	5 years



LM6 All Stainless Steel Submersible Transmitter

LM6 is designed for continuous level measurement in water or other liquids with low viscosity. Typical installations include ground or tank level monitoring of water and sewage treatment measurement.

Output	2-wire 4-20 mA
Housing	316L SS
Accuracy	±0.35% FSO
Range	50"H ₂ O to 300 psi
Sensor	Stainless steel
Warranty	5 years



WinSMART™ LY16 Pressure Transmitter

LY16 is a high-powered smart transmitter with hazardous approvals and broad accuracy classes, able to handle all pressure measurement requirements

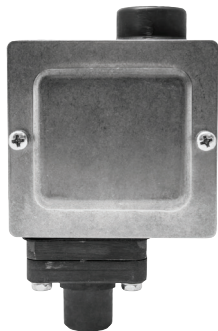
Output	4/20mA, 1/5VDC, Modbus RS485, HART®
Housing	Die-cast aluminum, painted blue
Accuracy	0.2%, 0.5%, 0.1%, 0.075%, 0.05%
Range	-14.5 psi up to 14,500 psi
Sensor	316 SS



WinSMART™ LY36 Differential Pressure Transmitter

LY36 smart differential pressure transmitter can handle low and high pressure requirements and is equipped with hazardous approvals. Differential pressure transmitters measure pressure drops across orifices and can also monitor flow and level

Output	4/20mA, 1/5VDC, Modbus RS485, HART®
Housing	Die-cast aluminum, painted blue
Accuracy	0.05%, 0.075%
Range	-24"H ₂ O up to 1,450 psi
Sensor	316 SS



2WPS General Purpose Pressure Switch

The 2WPS has a NEMA 4, IP65 enclosure rating with the option of a NEMA 4X rating. It is typically utilized for pump and compressor monitoring and general industrial applications.

Housing	Anodized aluminum
Wetted Parts	Aluminum and Buna-N (PTFE O-ring or FKM diaphragm optional)
Range	Vac to 500 psi
No. of Contacts	One, SPDT
Accuracy	±2% of the adjustable range
Warranty	5 years

4WPS Low Pressure Diaphragm Pressure Switch

4WPS has simple single or dual set point adjustment. With ±0.5% accuracy it's ideal for more sensitive industrial applications.



Housing	Anodized aluminum
Wetted Parts	304 SS process connection and 17-PH SS diaphragm
Range	"H ₂ O to 150 psi
No. of Contacts	One or two SPDT (hermetically sealed option for 1 x SPDT only)
Accuracy	±0.5% of the adjustable range
Warranty	5 years

D40 Diaphragm Seal

This compact lightweight diaphragm seal is ideally suited for applications where space limitations exist. This diaphragm seal is primarily utilized to protect gauges and transmitters from corrosive media.



Housing	AISI 316 SS
Diaphragm	AISI 316L SS, welded
Min. Pressure	15 psi
Max. Pressure	1,000 psi
Connection	1/4" and 1/2" NPT female or male
Warranty	5 years

D70 Diaphragm Seal

The D70 is found in applications where process fluids are corrosive or viscous and could damage instrumentation. An optional flushing connection is available to prevent clogging of the seal.



Housing	316L SS, Monel®, Hastelloy® C
Diaphragm	316L SS, Monel®, Hastelloy® C, FKM
Min. Pressure	30 psi
Max. Pressure	2,500 psi
Connection	1/4", 1/2", 3/4" and 1" NPT bottom, 1/4" and 1/2" top
Warranty	5 years

D81 Isolation Ring

D81 is an in-line diaphragm seal that is available in a variety of configurations to fit specific applications. The wafer style isolation ring makes the D81 ideal for measuring the pressure of viscous or solid media.



Housing	Carbon Steel, 316 SS, Acetal, others available
Diaphragm	EPDM, Neoprene, Nitrile or Hypalon®
Min. Pressure	Vacuum
Max. Pressure	1,000 psi
Connection	1/4" and 1/2" NPTF gauge ports, 1"-42" pipe sizes, (consult factory for larger sizes)
Warranty	5 years

*Tee fitting also available

NVA Needle Valve

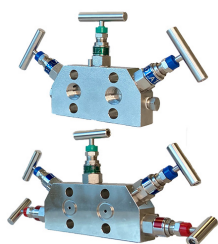
NVA Needle Valves come in straight, angle body, multiport or block & bleed, hard or soft seat, carbon or stainless steel with a NACE option. They provide excellent flow regulation and are leak tight.



Body	Carbon steel or stainless steel with or without NACE
Seat	Hard or soft seat
Max. Pressure	6,000 or 10,000 psi
Connection	1/4", 3/8", 1/2", 3/4" and 1" NPTF and NPTM connection options
Warranty	5 years

MVA 3 & 5 Handle Manifold

Manifold valves are designed to be perfectly installed with Winters LY36 Series differential transmitter and are critical in process and industrial environments for the enabling of shut-downs for the testing, repair and upgrading of instruments



Body	Stainless Steel
Connections	1/2" NPTF x 1/2" NPTF
Pressure	6,000 psi (41,368 kPa) (hard seat)
Needle / Needle Tip	Stainless Steel
Stem O-rings	PTFE/Graphite (Graphite is used for high temperature applications)



TBM Bi-Metal Thermometer

This industrial grade thermometer uses a bi-metallic sensing element for reliable temperature readings. All models are hermetically sealed and fully moisture and water proof.

Dial Size	1" to 6"
Case	AISI 304 SS
Accuracy	±1% of full scale
Range	-100°F to 1,000°F (-70°C to 550°C)
Connection	1/4" and 1/2" NPT bottom, back and adjustable angle
Warranty	5 years



TRR Remote Reading Thermometer

TRRs are heavy duty gas or vapour filled thermometers for remote reading installations. This product is available for immediate delivery off-the-shelf and non-standard configurations are made-to-order.

Dial Size	2.5", 3.5", 4", 4.5", 6" or 8.5"
Case	2.5": 316 SS, 3.5" and 4": steel painted black, others are aluminum painted black
Accuracy	Gas ±0.5% of full scale value, Vapour ±2% of full scale value
Range	-40°F to 1,000°F (-40°C to 537°C)
Connection	1/2" bulb diameter brass* or SS
Warranty	5 years



WinSMART™ TY52 Temperature Transmitter

Equipped with a PT100 RTD, TY52 can handle many different smart temperature reading applications from hazardous to general purpose areas

Output	4/20mA, 1/5VDC, Modbus RS485, HART®
Housing	Die-cast aluminum, painted blue
Accuracy	0.5%
Range	-50 up to 400°C / -58 up to 752°F
Stem	316 SS

TBR Bi-Metal Threaded Thermowell

The TBR is standard in a "stepped construction" and available in a variety of custom configurations. Use to protect TBM thermometers from media or to allow for maintenance without shutting down a system.



Material	Brass*, AISI 304 SS, AISI 316 SS, other materials available upon request
Bore	.260" standard
Length	2.5", 4", 6", 9", 12" or 15"
Process Connect.	3/4", 1/2" or 1" standard, other thread sizes available upon request
Therm. Connect.	1/2" NPT female, other thread sizes available upon request
Warranty	5 years

TWF Bi-Metal Thermowell

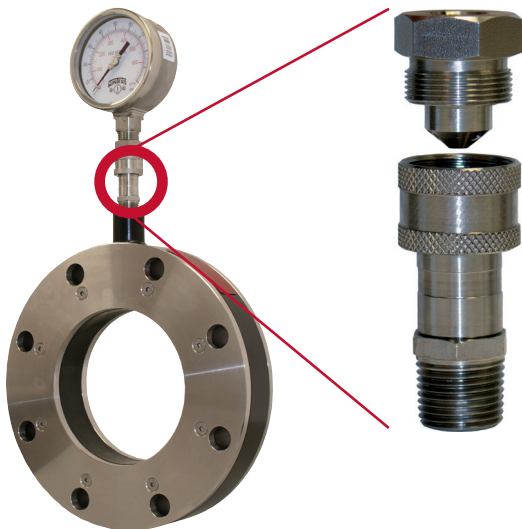
The TWF thermowell is designed for use on a closed system. It is used to protect thermometers from process media and to allow for thermometer replacement without requiring shut-down of the system.



Material	304 SS or 316 SS
Bore	.260"
Length	4", 6", 9", 12" or 15"
Process Connect.	1", 1.5" or 2" flange
Therm. Connect.	1/2" NPT female
Warranty	5 years

Winters Isolation Ring

Winters' Isolation Ring provides a clog-free method of measuring the pressure of media containing solids. The flanged pipe connection provides accurate measurement while minimizing the amount of weight added to the system. A unique WinCONNECT fitting provides quick replacement of instrumentation, minimizing system down-time.




Description and Features:

- ✓ Pressure measurement with no clogging
- ✓ WinCONNECT fitting allows pressure instruments to be shipped separately preventing damage in transit
- ✓ Quick field replacement without tools eliminates system down-time and leakage
- ✓ Tee fittings can be used so multiple instruments can be installed on the same ring
- ✓ Isolation ring works with 150# and 300# flanges

Carpenter® 20 is a registered trademark of Carpenter Technologies
Hastelloy® is a registered trademark of Haynes International, Inc.
Hypalon® is a registered trademark of DuPont Performance Elastomers
Kynar® is a registered trademark of Elf Atochem North America

Nordel® is a registered trademark of DuPont Dow Elastomers
Viton® is a registered trademark of DuPont Performance Elastomers

*  **WARNING:** This product can expose you to chemicals including lead, which is known to the State of California to cause cancer and birth defects or other reproductive harm. For more information go to www.P65Warnings.ca.gov.

WINTERS INSTRUMENTS

MANUFACTURER OF INDUSTRIAL INSTRUMENTATION



Winters Instruments is a global manufacturer of premium quality pressure and temperature instrumentation, with distribution partners in over 90 countries. Please contact us for your nearest Regional Manager.

Corporate - Canada
Winters Instruments
121 Railside Road
Toronto, Ontario
M3A 1B2
Tel: 416-444-2345
1-800-WINTERS
Fax: 416-444-8979
sales@winters.com

Canada - Calgary
Winters Instruments
2410D 2nd Avenue SE
Calgary, Alberta
T2E 6J9
Tel: 403-723-6645
1-800-WINTERS
Fax: 403-723-6647
calgary@winters.com

USA - Houston
Winters Instruments
5400 W. Sam Houston Pkwy N.
Houston, Texas
77041
Tel: 281-880-8607
1-800-WINTERS
Fax: 281-880-8614
usasales@winters.com

USA - Buffalo
Winters Instruments
Airport Commerce Park
455 Cayuga Rd., Suite 650
Buffalo, New York
14225
Tel: 716-874-8700
1-800-WINTERS
Fax: 716-874-8800
usasales@winters.com

Asia - Shanghai
Winters Instruments
Shanghai WitHub Hi-Tech
Business Center Suite 308
No. 333 Hongqiao Road
Shanghai 200030 China
Tel: 86-21-6104-2610
Fax: 86-21-6104-2615
asiasales@winters.com
www.wintersasia.com

Latin America
Winters Instruments
Lamadrid 121
Los Troncos del Talar, B1608CEC
Buenos Aires, Argentina
Tel: 54-11-4715-3036
latinsales@winters.com
www.winters.com.ar

United Kingdom - Northampton
Winters Instruments
Unit, 4B Kingsfield Cl,
Northampton,
NN5 7QS
Tel: 44-0-1604-434826
emeasales@winters.com
www.winters.com

Europe - Middle East - Africa
Winters Instruments
Dubai Airport Free Zone
6WB G50
Dubai, United Arab Emirates
Tel: 971-4295-9177
Fax: 971-4295-9177
emeasales@winters.com



Distributed by: