

PORE FILTRATION

SUREPORE PES MEMBRANE FILTER CARTRIDGE

PES Membrane - Sterile Liquid Filter

SurePore PES Filter Cartridges are specially designed to provide a reliable sterilizing solution at an economical cost. Hydrophilic PES membrane cartridges require no pre-wetting and are ready to use. In addition, these filters provide excellent performance in pharmaceutical applications.



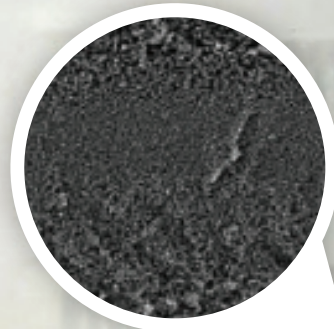
FEATURES AND BENEFITS

- Low diffusion flow
- Inherently hydrophilic PES membrane
- High surface area provides excellent flow rates and extended service life while maintaining high bacteria removal efficiency
- Low protein binding



QUALITY STANDARDS

- Bacterial quantitative retention of 10⁷ CFU/cm² *Brevundimonas Diminuta* (ATCC 19146) according to ASTM F838 methodology.
- 100% Integrity testing in manufacturing.
- Each filter is fully traceable with unique serial number.
- Manufactured in a facility which adheres to ISO 9001:2015 Practices.
- Full Regulatory Compliance with followign:
 - Bacterial Endotoxin: Aqueous extraction of autoclaved filter contains <0.25 EU/ml as determined by Limulus Amebocyte Lysate (LAL), USP <85>.
 - Non-fiber Releasing: Component materials meet the criteria for a "Non-fiber-releasing filter" as defined in 21 CFR 210.3(b)(6).
 - Component Material Toxicity:
 - Meet the requirement of USP <87> In Vitro Cytotoxicity Test;
 - Meet the Criteria of USP <88> Biological Reactivity Test for Class VI-121°C plastics.
 - TOC/Conductivity at 25°C: Autoclaved filter effluent meet the USP <643> for Total Organic Carbon and USP <645> for Water Conductivity per WFI requirements after a UPW flush of specified volume.
 - Particle Shedding: Autoclaved filter effluent meet the USP <788> for large volume injections.
 - Indirect Food Additive: All component materials meet the FDA indirect Food Additive requirements cited in 21 CFR 177-182, and EU framework regulation [1935/2004/EC]

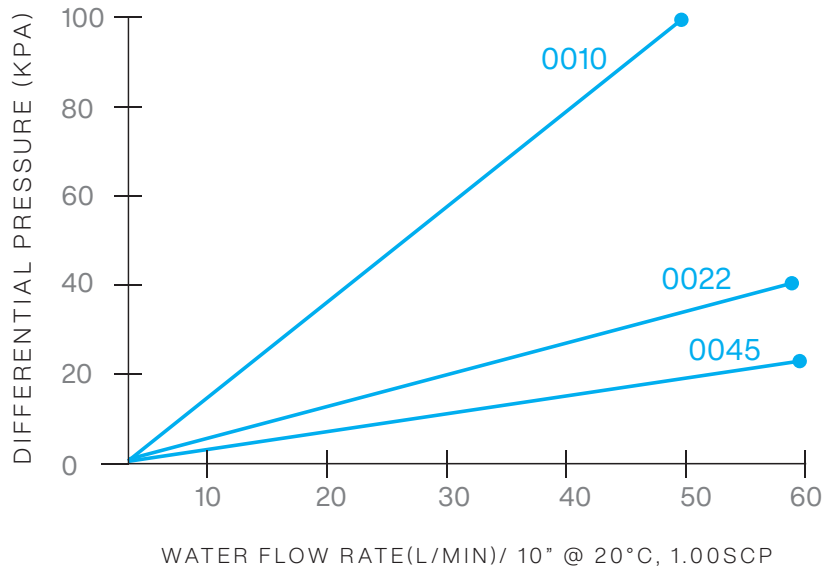


TYPICAL APPLICATIONS

ANTIBIOTCS
LVP & SVP
LARGE BATCH SOLUTIONS
CLEANING &
DISINFECTING LIQUIDS



FLOW RATE CHARACTERISTICS



MATERIALS OF CONSTRUCTION

Filter Media	PES Membrane
Cage/Support	Polypropoylene
Core/End Caps	Polypropoylene

STERILIZATION

Inline Steam Sterilization	up to 100 cycles (135°C for 30min < 0.3 bar per cycle)
Autoclave	up to 200 cycles (130°C for 30min per cycle)

INTEGRITY TEST DATA

Bubble Point	BP: ≥ 0.32 MPa (water), 0.22 μm BP: ≥ 0.20 MPa (water), 0.45 μm
Diffusion Flow	DF: ≤ 25 ml/min/10" @ 0.275 Mpa, 0.22 μm DF: ≤ 25 ml/min/10" @ 0.15 Mpa, 0.45 μm

OPERATING CONDITIONS

Max. Operating Pressure		6.9 bar (100 psi) at 25°C
		4.0 bar (58 psi) at 60°C
		2.4 bar (35 psi) at 80°C
Max. Differential Pressure	Forward	6.9 bar (100 psi) at 25°C
		4.0 bar (58 psi) at 60°C
		2.4 bar (35 psi) at 80°C
	Reverse	3.0 bar (44 psi) at 25°C
		1.0 bar (15 psi) at 80°C
Effective Filtration Area		0.58m ² / φ 69-10inch

ORDERING INFORMATION

PFSHR	Removal Ratings	End Cap	Minimal Length	Seal Material	-P
	0010 =0.10μm	HSF = 226/Fin (PBT Insert)	05 = 5"	S = Silicone	
	0022 =0.22μm	HSC = 226/Flat (PBT Insert)	10 = 10"	E =EPDM	
	0045 =0.45μm	HTF = 222/Fin (PST Insert)	20 = 20"	V = Viton	
		HTC = 222/Flat (PBT Insert)	30 = 20"	P = PFA/Viton	
		DOE = Double Open End	40 = 20"		

MORE FROM PORE FILTRATION:

Depth Filters – Pleated Depth Filters – Membrane filters – Carbon filters – Bag Filters – St.St. Filters – Basket Filters – Strainers – Hygienic & Industrial liquid housings – Gas housings

CONTACT PORE FILTRATION:

www.porefiltration.co.uk • enquires@porefiltration.co.uk
Unit 26 • Oak Business Centre • 79-93 Ratcliffe Road
Sileby • Loughborough • LE12 7PU