

250 LOHM 187 LEE CHEK®

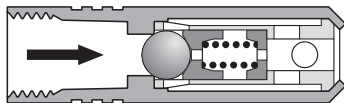
The Lee Company's new 250 Lohm 187 Lee Chek provides 60% more flow in the same compact package as Lee's field-proven Axial Flow 187 Chek.

Available in forward and reverse flow configurations, the new Lee Chek is constructed entirely of stainless steel, and features a hard, metal to metal seat for durability and long life. Each Lee Chek is 100% tested and inspected to ensure reliable, consistent performance. Maximum working pressure is 3,000 psid and nominal weight is only 1.5 grams.

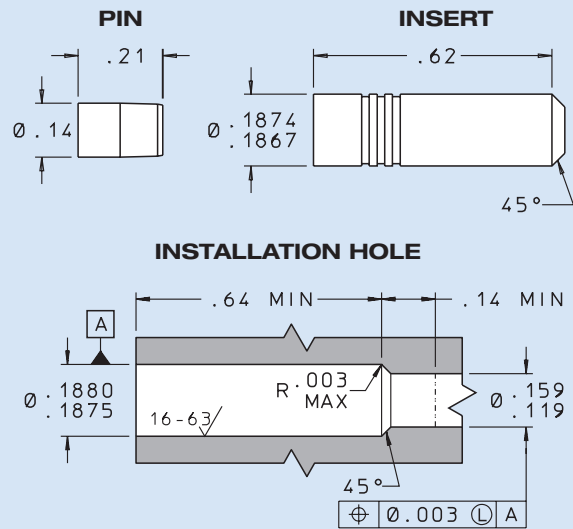
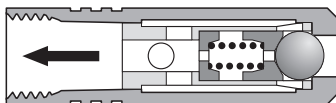
- 60% Higher Flow Capacity
- Small Size: 0.187" dia.
- Weighs only 1.5 grams
- 100% Tested and Inspected
- Maximum Working Pressure: 3,000 psid



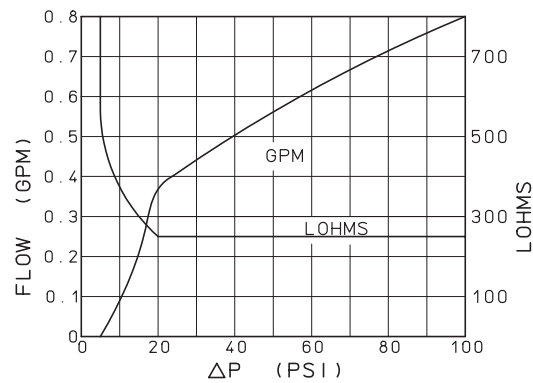
FREE FLOW FORWARD



FREE FLOW REVERSE



Valve performance on MIL-PRF-83282 at 85°F.



MATERIALS		
PART	MATERIAL	SPECIFICATION
Body	303 CRES	QQ-S-763C
Pin	17-4PH CRES	AMS 5643
Spring	17-7PH CRES	AMS 5678
Ball	440C CRES	AMS 5630
Ball Follower	303 CRES	QQ-S-763C
Spring Seat	303 CRES	QQ-S-763C
Cage	303 CRES	QQ-S-763C

LEE Part Number	Cracking Pressure (psid)	Lohm Rate	Flow Direction
CKFA1876105A	5 ± 3	250	FORWARD
CKFA1876101A	1 ± 0.5	250	FORWARD
CKRA1876105A	5 ± 3	250	REVERSE
CKRA1876101A	1 ± 0.5	250	REVERSE

Finish: All Cres Parts Passivated per AMS-QQ-P-35. Pins are prewaxed. Do not degrease. Do not lubricate.