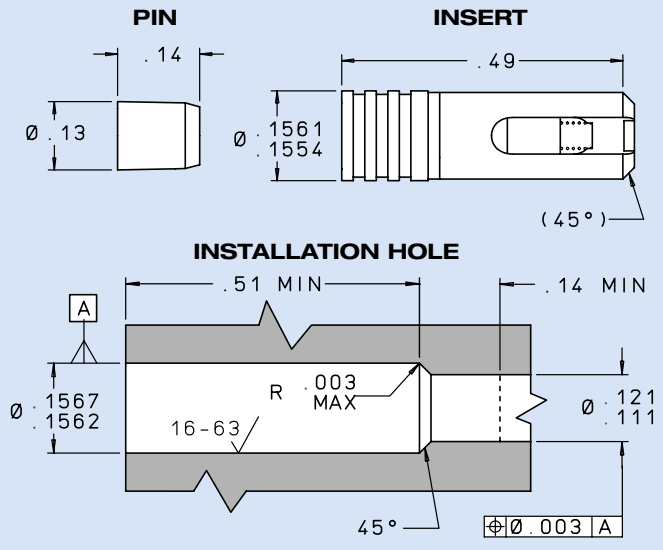


High Pressure 156 LEE CHEK®

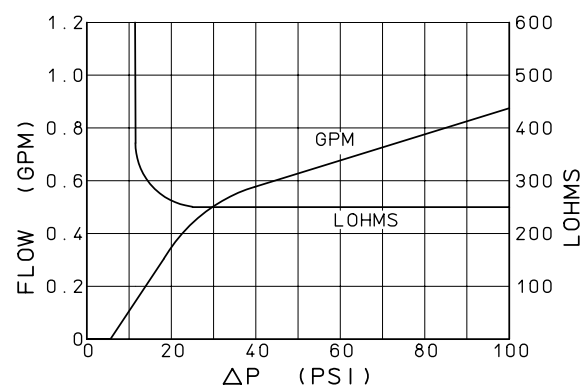
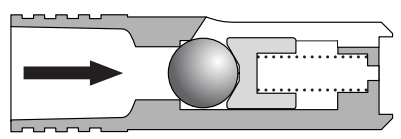
The Lee Company's new High Pressure 156 Lee Chek is the latest addition to our field-proven, miniature check valve family. Weighing only 0.7 grams nominal, the 0.156" diameter valve is nearly 2.5 times more efficient than other high pressure check valves of similar size. The installed envelope is less than half that of a 0.187" diameter high pressure check valve.

Available in a forward flow configuration, the new Lee Chek is constructed entirely of stainless steel, and features a hard, metal to metal seat for durability and long life. Each Lee Chek is 100% tested and inspected to ensure reliable, consistent performance. Maximum working pressure is 5,000 psid.

- 5,000 psid maximum working pressure
- Small size: 0.156" diameter
- Weighs only 0.7 grams
- 100% tested and inspected
- All stainless steel



FREE FLOW FORWARD



MATERIALS		
PART	MATERIAL	SPECIFICATION
Body	15-5PH CRES	AMS 5659
Pin	13-8MO	AMS 5629
Spring	302 CRES	AMS 5688
Ball	440C CRES	AMS 5630
Ball Follower	15-5PH CRES	AMS 5659

LEE Part Number	Cracking Pressure (psid)	Lohm Rate	Flow Direction
CHFA1566505A	5 ± 3	250 Max	FORWARD
CHFA1566501A	1 ± 0.5	250 Max	FORWARD

Finish: All Cres Parts Passivated per AMS 2700. Pins are prewaxed. Do not degrease. Do not lubricate.