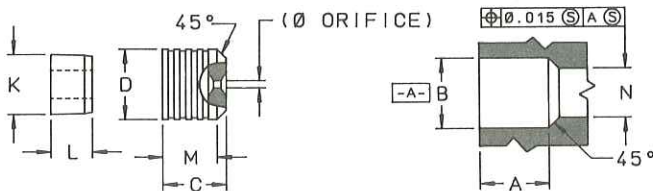


LEE PRODUCT DATA SHEET

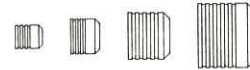
LUBRICATION NOZZLE - JELA

The Lee Company now offers an expanded, more versatile line of lubrication nozzles. These new lube nozzles are available in four body sizes and two materials to accommodate a wide variety of installation requirements. Accuracy and repeatability are guaranteed by our targeting and Lohm rate tests, while bi-directionality provides design flexibility.

LUBE NOZZLE INSTALLATION HOLE ²



- Four standard body sizes (.125, .187, .250, and .343) with .010 oversize versions available.
- Materials: 15-5 PH CRES / AMS 5659
7075-T6 Alum. / QQ-A-225
- 90% of the flow to hit a Ø .25 inch target at a distance of 2 inches. ²
- Maximum Working Pressure Differential:
Stainless Steel: 1500 psi continuous
Aluminum: 200 psi continuous
1500 psi intermittent



ACTUAL SIZES

STAINLESS STEEL LUBRICATION NOZZLES

Nominal Body Dia.	A Min. Depth	B Diameter	C Max. Lgth.	D Diameter	K Nom Dia.	L Nom. Lgth.	M Nom. Lgth.	N Max. Dia.	Nom. Wt. (gram)
.125	.15	.1250 - .1275	.15	.1241 - .1250	.10	.09	.124	.099	.18
.187	.16	.1875 - .1900	.16	.1866 - .1875	.15	.09	.130	.161	.45
.250	.23	.2500 - .2525	.23	.2491 - .2500	.21	.15	.190	.224	1.2
.343	.31	.3437 - .3462	.31	.3428 - .3437	.30	.22	.262	.318	3.1

LEE PART NUMBERS

BODY DIAMETERS				LOHM RATE ±15% ¹	Ø ORIFICE (REFERENCE)
.125	.187	.250	.343		
		JELA2510200L	JELA3410200L	200	.070
		JELA2510250L	JELA3410250L	250	.060
		JELA2510350L	JELA3410350L	350	.051
	JELA1810450L	JELA2510450L	JELA3410450L	450	.045
	JELA1810600L	JELA2510600L	JELA3410600L	600	.039
	JELA1810800L	JELA2510800L	JELA3410800L	800	.034
JELA1210105D	JELA1810105D	JELA2510105D	JELA3410105D	1050	.029
JELA1210135D	JELA1810135D	JELA2510135D	JELA3410135D	1350	.025
JELA1210175D	JELA1810175D	JELA2510175D	JELA3410175D	1750	.022
JELA1210225D	JELA1810225D	JELA2510225D	JELA3410225D	2250	.019
JELA1210295D	JELA1810295D	JELA2510295D	JELA3410295D	2950	.017
JELA1210385D	JELA1810385D	JELA2510385D	JELA3410385D	3850	.015
JELA1210500D	JELA1810500D	JELA2510500D	JELA3410500D	5000	.013
JELA1210650D	JELA1810650D	JELA2510650D	JELA3410650D	6500	.011
JELA1210790D	JELA1810790D	JELA2510790D	JELA3410790D	7900	.010

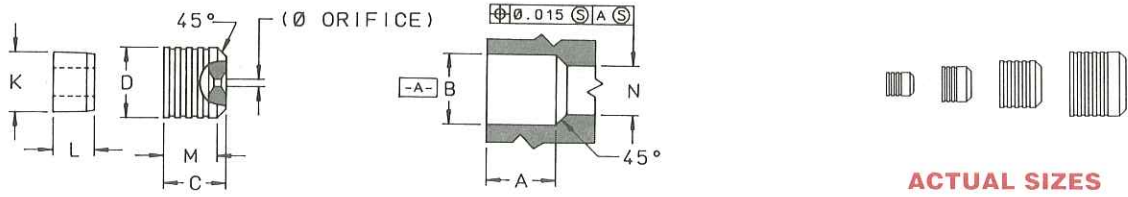
¹ Lohm Rate when discharging to air at atmospheric pressure. The Lohm has been selected so that a 1 Lohm restriction will permit a flow of 100 gallons per minute of water with a pressure drop of 25 psi at a temperature of 80°F. For more information, see the Engineering Section (M) of the Lee Technical Hydraulic Handbook.

² See the appropriate inspection drawing for more detailed information.

Note: All dimensions are in inches unless otherwise specified.

LUBE NOZZLE

INSTALLATION HOLE ²



ALUMINUM LUBRICATION NOZZLES									
Nominal Body Dia.	A Min. Depth	B Diameter	C Max. Lgth.	D Diameter	K Nom Dia.	L Nom. Lgth.	M Nom. Lgth.	N Max. Dia.	Nom. Wt. (gram)
.125	.15	.1250 - .1275	.15	.1241 - .1250	.10	.09	.124	.099	.07
.187	.16	.1875 - .1900	.16	.1866 - .1875	.15	.09	.130	.161	.16
.250	.23	.2500 - .2525	.23	.2491 - .2500	.21	.15	.190	.224	.42
.343	.31	.3437 - .3462	.31	.3428 - .3437	.30	.22	.262	.318	1.2

LEE PART NUMBERS					
BODY DIAMETERS				LOHM RATE ±15% ¹	Ø ORIFICE (REFERENCE)
.125	.187	.250	.343		
		JELA2520200L	JELA3420200L	200	.070
		JELA2520250L	JELA3420250L	250	.060
		JELA2520350L	JELA3420350L	350	.051
	JELA1820450L	JELA2520450L	JELA3420450L	450	.045
	JELA1820600L	JELA2520600L	JELA3420600L	600	.039
	JELA1820800L	JELA2520800L	JELA3420800L	800	.034
JELA1220105D	JELA1820105D	JELA2520105D	JELA3420105D	1050	.029
JELA1220135D	JELA1820135D	JELA2520135D	JELA3420135D	1350	.025
JELA1220175D	JELA1820175D	JELA2520175D	JELA3420175D	1750	.022
JELA1220225D	JELA1820225D	JELA2520225D	JELA3420225D	2250	.019
JELA1220295D	JELA1820295D	JELA2520295D	JELA3420295D	2950	.017
JELA1220385D	JELA1820385D	JELA2520385D	JELA3420385D	3850	.015
JELA1220500D	JELA1820500D	JELA2520500D	JELA3420500D	5000	.013
JELA1220650D	JELA1820650D	JELA2520650D	JELA3420650D	6500	.011
JELA1220790D	JELA1820790D	JELA2520790D	JELA3420790D	7900	.010

¹ Lohm Rate when discharging to air at atmospheric pressure. The Lohm has been selected so that a 1 Lohm restriction will permit a flow of 100 gallons per minute of water with a pressure drop of 25 psi at a temperature of 80°F. For more information, see the Engineering Section (M) of the Lee Technical Hydraulic Handbook.

² See the appropriate inspection drawing for more detailed information.

Note: All dimensions are in inches unless otherwise specified.

PDS 22 5M 10/91