

## NACE COMPLIANT PRESSURE RELIEF VALVES

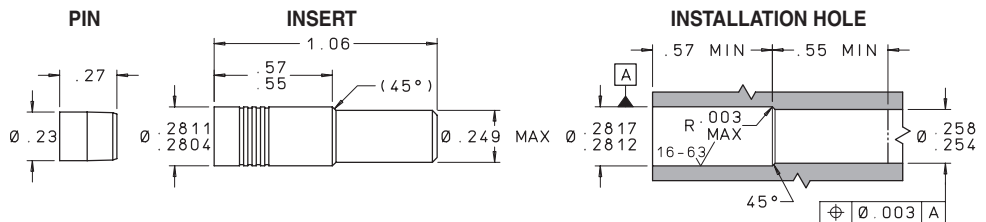
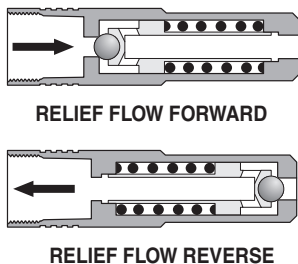
The Lee Company's new field proven .281 inch diameter Pressure Relief Valves are made with materials specifically chosen for optimal performance in harsh duty applications, such as those in the oil tool industry. These new high speed, direct acting valves are constructed entirely of corrosion-resistant materials that are compliant with NACE specification MR0175/ISO 15156.

Standard valves are available in forward and reverse flow directions with cracking pressures from 80 to 5900 psid. Custom models are also available with cracking pressures as high as 12,000 psid. Each Lee pressure relief valve is 100% tested and inspected to ensure reliable consistent performance. Contact your local Lee Sales Engineer for additional information and technical assistance.

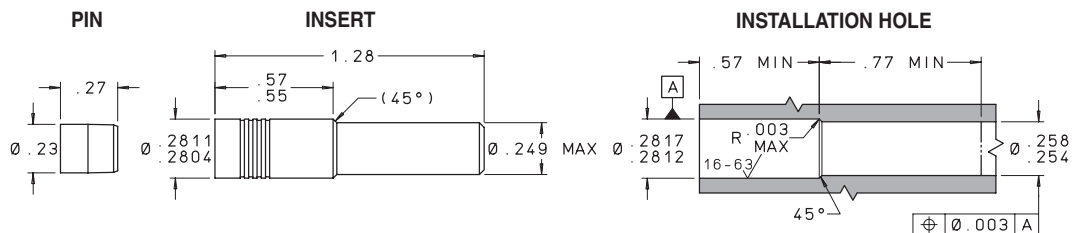
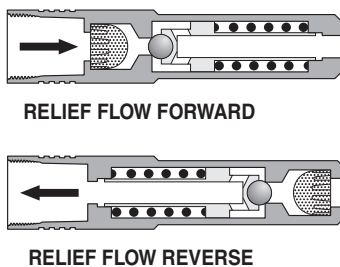
- All Valve Materials Compliant with NACE MR0175/ISO 15156
- Materials Used:
  - MP35N
  - 316L
  - Elgiloy
- Standard Cracking Pressures from 80 to 5900 psid



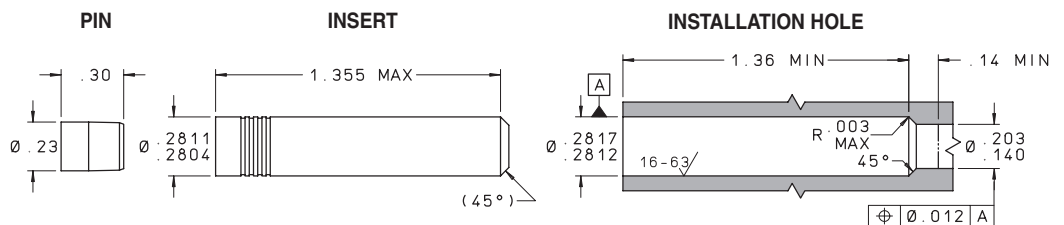
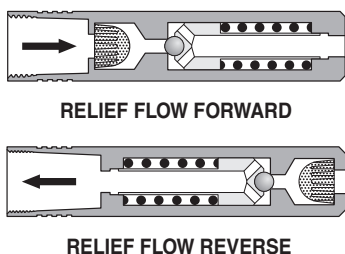
### .281 PRI® (up to 3000 psi system pressure)



### Screened .281 PRI® (up to 3000 psi system pressure)



### High Pressure Screened .281 PRI® (up to 5000 psi system pressure)



3K .281 PRI	LEE PART NUMBER		MINIMUM CRACKING PRESSURE (psid)*	FLOW POINT (MIL-PRF-83282) †			MINIMUM SHUTOFF PRESSURE (psid)*
	FORWARD	REVERSE		MAX. LOHM RATE**	MIN. GPM	AT (psid)	
	PRFA2819080L	PRRA2819080L	80	245	0.9	100	68
PRFA2819120L	PRRA2819120L	120	245	1.1	150	100	
PRFA2819200L	PRRA2819200L	200	235	1.5	250	170	
PRFA2819300L	PRRA2819300L	300	235	1.8	375	255	
PRFA2819400L	PRRA2819400L	400	235	2.1	500	340	
PRFA2819500L	PRRA2819500L	500	235	2.4	625	425	
PRFA2819600L	PRRA2819600L	600	235	2.6	750	510	
PRFA2819700L	PRRA2819700L	700	235	2.8	875	595	
PRFA2819800L	PRRA2819800L	800	235	3.0	1000	680	
PRFA2819900L	PRRA2819900L	900	235	3.2	1125	765	
PRFA2819100D	PRRA2819100D	1000	235	3.4	1250	850	
PRFA2819110D	PRRA2819110D	1100	235	3.5	1375	935	
PRFA2819120D	PRRA2819120D	1200	235	3.7	1500	1020	
PRFA2819140D	PRRA2819140D	1400	235	4.0	1750	1190	
PRFA2819160D	PRRA2819160D	1600	235	4.3	2000	1360	
PRFA2819180D	PRRA2819180D	1800	235	4.5	2250	1530	
PRFA2819200D	PRRA2819200D	2000	235	4.8	2500	1700	
PRFA2819220D	PRRA2819220D	2200	235	5.0	2750	1870	
PRFA2819240D	PRRA2819240D	2400	235	5.2	3000	2040	
PRFA2819250D	PRRA2819250D	2500	235	5.4	3125	2125	
PRFA2819260D	PRRA2819260D	2600	235	5.5	3250	2210	
PRFA2819280D	PRRA2819280D	2800	235	5.7	3500	2380	
PRFA2819300D	PRRA2819300D	3000	235	5.9	3750	2550	
PRFA2819310D	PRRA2819310D	3100	290	4.7	3875	2635	
PRFA2819320D	PRRA2819320D	3200	290	4.8	4000	2720	
PRFA2819330D	PRRA2819330D	3300	290	4.9	4125	2805	
PRFA2819340D	PRRA2819340D	3400	290	5.0	4250	2890	
PRFA2819350D	PRRA2819350D	3500	290	5.0	4375	2975	
PRFA2819360D	PRRA2819360D	3600	290	5.1	4500	3060	

3K SCREENED .281 PRI	LEE PART NUMBER		MINIMUM CRACKING PRESSURE (psid)*	FLOW POINT (MIL-PRF-83282)			MINIMUM SHUTOFF PRESSURE (psid)*
	FORWARD	REVERSE		MAX. LOHM RATE**	MIN. GPM	AT (psid)	
	PRFA2817080L	PRRA2817080L	80	300	0.7	100	68
PRFA2817120L	PRRA2817120L	120	300	0.8	150	100	
PRFA2817200L	PRRA2817200L	200	300	1.1	250	170	
PRFA2817300L	PRRA2817300L	300	300	1.3	375	255	
PRFA2817400L	PRRA2817400L	400	300	1.6	500	340	
PRFA2817500L	PRRA2817500L	500	300	1.7	625	425	
PRFA2817600L	PRRA2817600L	600	300	1.9	750	510	
PRFA2817700L	PRRA2817700L	700	300	2.1	875	595	
PRFA2817800L	PRRA2817800L	800	300	2.2	1000	680	
PRFA2817900L	PRRA2817900L	900	300	2.4	1125	765	
PRFA2817100D	PRRA2817100D	1000	300	2.5	1250	850	
PRFA2817110D	PRRA2817110D	1100	300	2.6	1375	935	
PRFA2817120D	PRRA2817120D	1200	300	2.7	1500	1020	
PRFA2817140D	PRRA2817140D	1400	300	2.9	1750	1190	
PRFA2817160D	PRRA2817160D	1600	300	3.2	2000	1360	
PRFA2817180D	PRRA2817180D	1800	300	3.4	2250	1530	
PRFA2817200D	PRRA2817200D	2000	300	3.5	2500	1700	
PRFA2817220D	PRRA2817220D	2200	300	3.7	2750	1870	
PRFA2817240D	PRRA2817240D	2400	300	3.9	3000	2040	
PRFA2817250D	PRRA2817250D	2500	300	4.0	3125	2125	
PRFA2817260D	PRRA2817260D	2600	300	4.0	3250	2210	
PRFA2817280D	PRRA2817280D	2800	300	4.2	3500	2380	
PRFA2817300D	PRRA2817300D	3000	300	4.3	3750	2550	
PRFA2817310D	PRRA2817310D	3100	350	3.8	3875	2635	
PRFA2817320D	PRRA2817320D	3200	350	3.8	4000	2720	
PRFA2817330D	PRRA2817330D	3300	350	3.9	4125	2805	
PRFA2817340D	PRRA2817340D	3400	350	4.0	4250	2890	
PRFA2817350D	PRRA2817350D	3500	350	4.0	4375	2975	
PRFA2817360D	PRRA2817360D	3600	350	4.1	4500	3060	

5K SCREENED .281 PRI	LEE PART NUMBER		MINIMUM CRACKING PRESSURE (psid)*	FLOW POINT (MIL-PRF-83282)			MINIMUM SHUTOFF PRESSURE (psid)*
	FORWARD	REVERSE		MAX. LOHM RATE**	MIN. GPM	AT (psid)	
	PRFA2817300D	PRRA2817300D	3000	1500	0.90	3600	2850
PRFA2817320D	PRRA2817320D	3200	1500	0.90	3850	3000	
PRFA2817340D	PRRA2817340D	3400	1500	0.95	4050	3200	
PRFA2817420D	PRRA2817420D	4200	1500	1.0	4750	3700	
PRFA2817450D	PRRA2817450D	4500	1500	1.0	5100	4000	
PRFA2817470D	PRRA2817470D	4700	1500	1.1	5300	4200	
PRFA2817520D	PRRA2817520D	5200	1500	1.1	5800	4550	
PRFA2817570D	PRRA2817570D	5700	1500	1.2	6350	5000	
PRFA2817590D	PRRA2817590D	5900	1500	1.2	6600	5200	

\* Leakage at Minimum Cracking Pressure & Minimum Shutoff Pressure: 1 mL/Minute Maximum.

\*\* The Lohm is a measure of flow resistance. Example: One Lohm will permit a flow of 100 GPM of water at 25 psid at 80° F. Additional information can be found at [www.TheLeeCo.com](http://www.TheLeeCo.com).

† All valves thoroughly cleaned to remove Lee test fluid.