

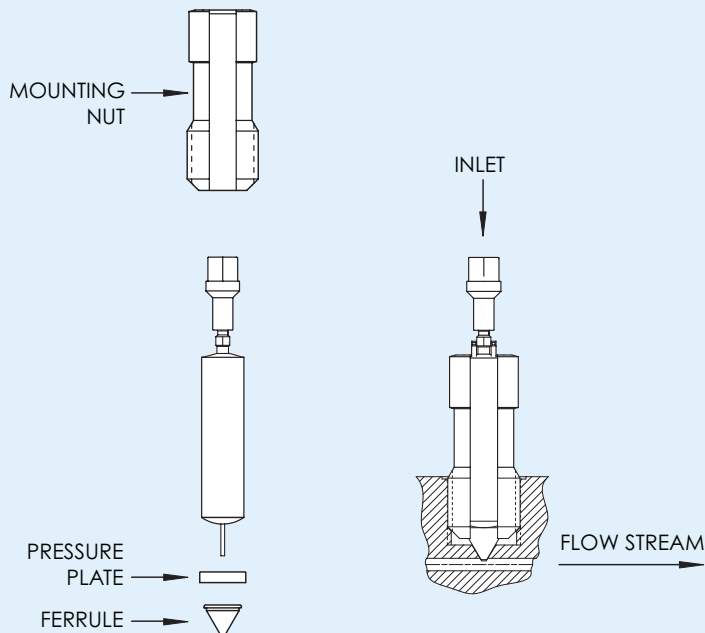
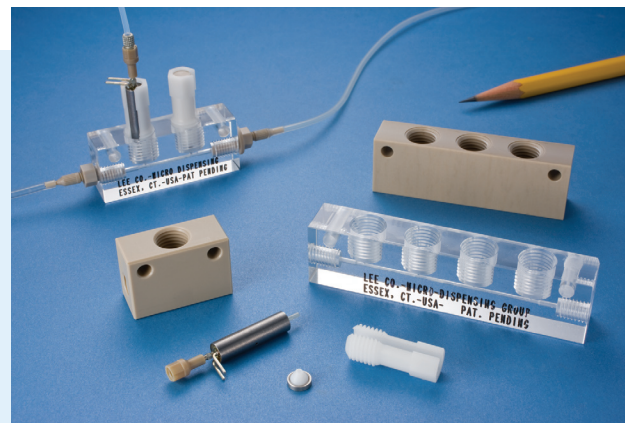
VHS INJECTION MANIFOLD MOUNT SYSTEM

The Lee VHS Injection Manifold Mount System allows for the precise injection of fluid into a flow stream. Using this system, any ported Lee VHS micro-dispense valve can be mounted so that the outlet port is in close proximity to the flow stream, thus minimizing captive capillary volume and increasing injected volume repeatability. Lee VHS valves are high-speed, two-way solenoid valves that have set the standard in applications requiring microliter and nanoliter dispense volumes.

One, two, three and four-place standard manifolds are available. For greater design flexibility, and to allow for future expansion, boss plugs are available to seal any unused valve ports in the manifold. Valves and plugs can be installed and removed repeatedly.

Custom manifold designs and materials are also available. Contact your local Lee Sales Engineer for additional technical assistance and application information.

- Captive capillary volume is 0.5 μ L
- Injection Kits are available in standard and small port configurations
- Teflon[®] (ferrule) is the only additional wetted material – mounting nut and pressure plate do not contact the fluid
- Valve may be rotated after installation without compromising seal
- Pressures up to 120 psi
- Simple boss preparation and installation



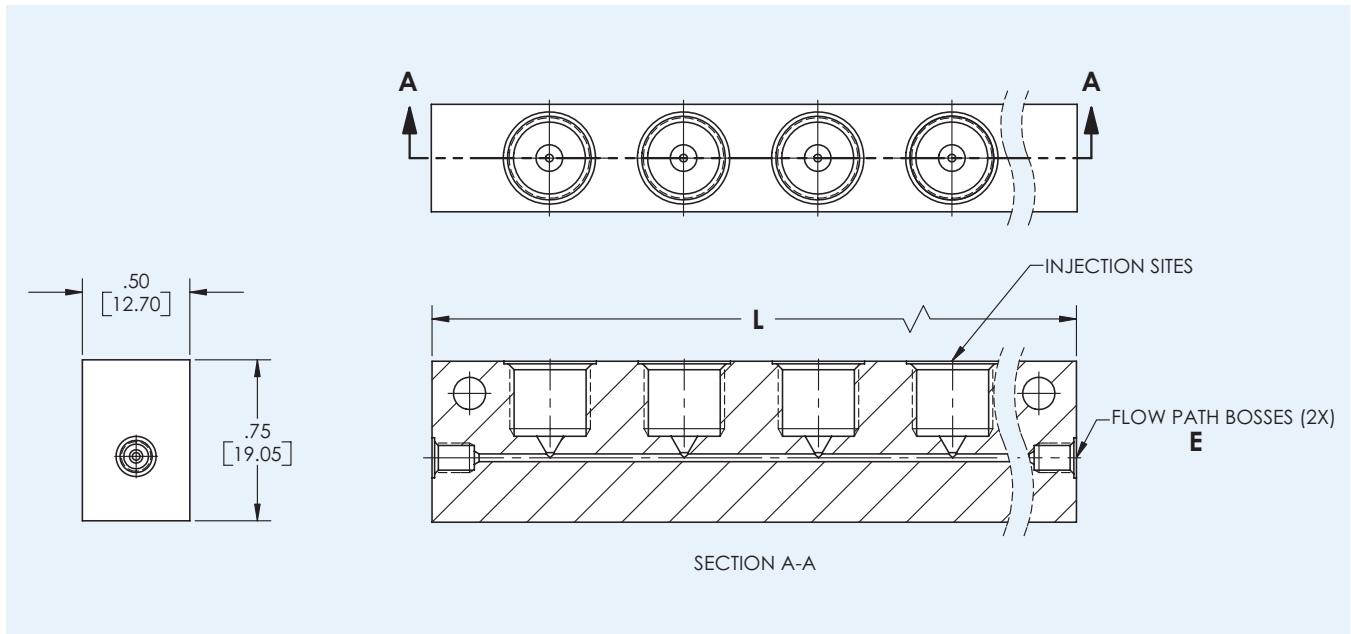
ACTUAL SIZE

KIT	KIT PART NUMBER	REPLACEMENT FERRULE
Standard Port (0.050" dia)	IKTX0322170A	IHWX0306020A
Small Port (0.020" dia)	IKTX0322200A	IHWX0306040A
Manifold Plug	IKTX0322190A	IHWX0306260A

Patent Pending

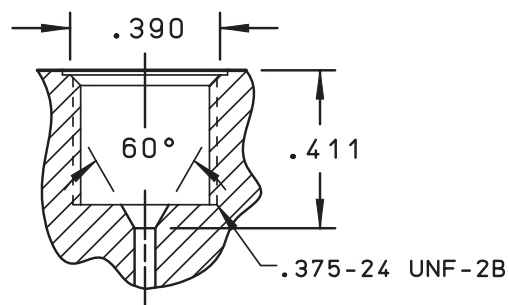
Teflon[®] is a registered trademark of E.I. du Pont de Nemours and Company.

LEE MANIFOLD CONFIGURATIONS



Material	Flow Path Boss (E)	1 valve L = 1.10 inch	2 valve L = 1.73 inch	3 valve L = 2.35 inch	4 valve L = 2.98 inch
PEEK	062 MINSTAC	INMA0602310B	INMA0602320B	INMA0602330B	INMA0602340B
PMMA	062 MINSTAC	INMA0601310B	INMA0601320B	INMA0601330B	INMA0601340B
PEEK	1/4 - 28	INMA0602410B	INMA0602420B	INMA0602430B	INMA0602440B
PMMA	1/4 - 28	INMA0601410B	INMA0601420B	INMA0601430B	INMA0601440B

INSTALLATION HOLE



A detailed machining drawing for the valve boss (INIX0500050A) is available to assist in the manufacturing of custom manifolds or in-house drawings.