



The **SIGN** Catalogue

Your comprehensive signage directory

Legislation and Guidance

The Health and Safety (Safety Signs and Signals) Regulations 1996 require employers to provide and maintain safety signs where there is significant risk to health and safety that has not been avoided or controlled by other means (e.g. safe systems of work) provided that the use of a sign can help reduce the risk.

Throughout this catalogue you will find guidance about;

- ▶ Risk assessment
- ▶ Use of pictorial symbols
- ▶ General health and safety signs
- ▶ Fire/emergency escape signs
- ▶ Positioning of signs
- ▶ Marking of hazardous storage areas and obstacles
- ▶ Dangerous locations
- ▶ Identification of pipelines

ISO 7010 is the International standard for safety signs.

ISO 7010 was developed to provide consistency in design across the EU. Stocksigns has incorporated the new designs and you may notice some design changes to the symbols whereas others are virtually unchanged.

The majority of British Standard symbols have been adopted by ISO and as such have now been encompassed into UK safety legislation.

Use of Symbols and Graphical Images

The use of symbols and graphical images is a simple safety system used to convey safety messages at a glance. Colours and symbols, appropriately used, provide information and warnings of hazards which are essential to personal safety.

Prohibition



A red circular band with diagonal cross bar on a white background, the symbol within the circle to be black denoting a safety sign that indicates that a certain behaviour is prohibited.

Hazard



A yellow triangle with black border and symbol within the yellow area denoting a safety sign that gives warning of a hazard.

Mandatory



A blue circle with white symbol denoting a sign that indicates that a specific course of action must be taken.

Fire Equipment



A red rectangle or square with symbol in white denoting a safety sign that indicates the location of fire fighting equipment.

Safe Condition



A green rectangle or square with symbol or text in white denoting a safety sign providing information about safe conditions.

LOOK OUT FOR



Best Sellers
The best selling signs and products.



New
Signs and ranges new to this catalogue.



Updated
Signs updated to the latest ISO 2018 symbols.



Great Value
Products that represent excellent value for money.



Stocksigns Accreditations and Associations



Material Choices



Aluminium

Aluminium is a long-lasting durable coated metal that can be used for both interior and exterior signs.

Series code - 10



Reflective Signs

Class 1 or Class 2 reflective material is adhered to aluminium composite as standard, but can be supplied as a vinyl or applied to any rigid substrate. Generally used for traffic signs that can be post or wall mounted.

Series codes - Traffic 70, Safety 75



Rigid PVC Plastic

Our best-selling material choice, 1mm semi-rigid plastic PVC is suitable for interior and exterior use. Signs are supplied with square corners, no holes as standard.

Series code - 20



Correx

A durable yet lightweight corrugated PVC material particularly suited to temporary signs. Available in 4mm and 10mm thicknesses.

Bespoke material on request



Photoluminescent

(Rigid Plastic and SA Vinyl)

Photoluminescent signs provide temporary visibility in the dark making it ideal for fire signage. In line with the PSPA, standard signs are produced on Class B, with Class C material available on request.

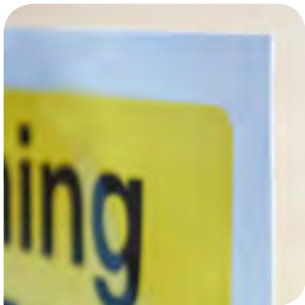
Series codes - RP 21 / SAV 31



Foamex

A versatile PVC foam sheet with a smooth matt finish. This material is often used for temporary signs requiring a superior look. Available in 1, 3 and 5mm thicknesses.

Bespoke material on request



Self-Adhesive Vinyl

A cost effective high gloss PVC with a peel off backing, self-adhesive vinyl is ideal for interior signage. This material adheres to most smooth, clean surfaces including curves.

Series code - 30



Acrylic

Acrylic is a versatile material that is both lightweight and shatterproof. Best suited to internal signs. This offers a cost effective and safe alternative to using glass. Available in 3, 5 and 10mm thicknesses.

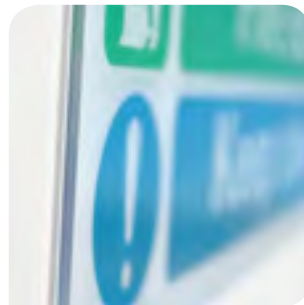
Bespoke material on request



Aluminium Composite

A rigid yet lightweight composite panel which offers a cost effective alternative to standard aluminium. With minimal scrap value, its use can help deter signage theft. This material is ideal for internal and external use.

Series code - 11



Polycarbonate

Polycarbonate is a clear material used as an alternative to acrylic. A very versatile material with a gloss finish. Compared to acrylic it has a higher impact resistance, is more UV stable and temperature resistant.

Bespoke material on request



Brushed Stainless Steel

Brushed Stainless Steel is available in two grades. 304 grade material provides a prestigious look ideally suited for internal signs. 316 marine grade available on request for external signs.

Series code - 60



Special Effect

Aluminium Composite

Available in both mirrored gold and brushed silver finish. These special effect finishes create a contemporary look when used on internal signage.

Bespoke material on request

Installation Guide

Prior to buying your sign it is important to consider where the sign will be used and from what distance it needs to be viewed.

The diagram below is intended to be used as a guide only.

For further advice speak to our sales team on 01737 774077.

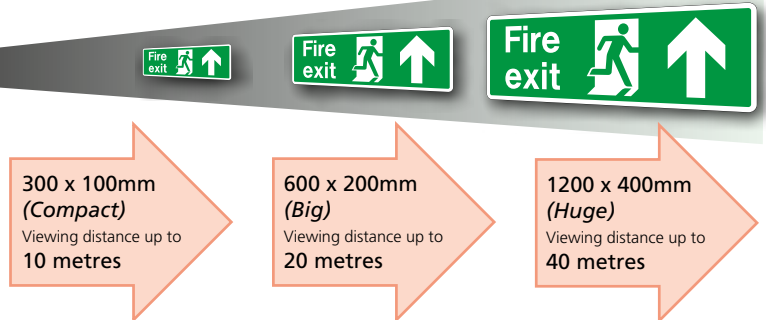
Recommended installation heights:

Above doors:

2m - 2.5m
from floor level to base of sign.

Directional wall fixed signs:

1.4m - 2.0m
from floor level to base of sign.



Easy Ordering

Understanding the Code

All of our standard products featured in this catalogue are identified by a unique five or six figure product code, followed in most cases by a size code consisting of two letters. e.g. **20 11090 RG**



10 20 30 11090 KD | RG

MATERIAL CODES

This tells you the materials the sign is available in.

e.g: **10** = Aluminium
20 = Rigid Plastic
30 = Self-Adhesive Vinyl

SIZE CODES

These are the sizes that the sign is available in. (See price grids for size identification)

PRODUCT CODE

This is the unique product code for that design.

How to Order



STEP 1

- ▶ Find the sign design you require.
- ▶ Note the product code.



STEP 2

- ▶ Choose the material you require.
- ▶ Use our material guide on the left to select the most suitable material for the job.



STEP 3

- ▶ Look at the sizes your sign is available in.
- ▶ Use the price grids for size codes.
- ▶ Choose the most appropriate size using the installation guide above.

To order this sign in Rigid Plastic size 600 x 200mm

use the code: **20 11090 RG**

Prices can be found by using the grids at the bottom of the pages or in the price list enclosed. (Except where items are separately priced).

Payment

- ▶ Choose your payment method: Credit Card - We accept Mastercard, Visa and American Express.
- ▶ Cheques should be made payable to Stocksigns Ltd.
- ▶ Accounts - We will be happy to open a credit account for you (subject to a standard credit check). All such sales are payable no later than 30 days from invoice date.
- ▶ BACS Payment welcome. Our account is: The Royal Bank of Scotland plc.
Account No. 23111244 Sort code 16-00-15
All prices are exclusive of Value Added Tax
- ▶ Phone, post or e-mail (sales@stocksigns.co.uk) your order.

By submitting your order, you confirm that you have read and understood our terms and conditions and agree to be bound by them (please see our T&C's online at www.stocksigns.co.uk or call 01737 774077 for a copy).

All rights reserved. All of this catalogue is protected by the Laws of Copyright. No part of this publication may be reproduced, stored in a retrieval system or transmitted in any form or by any means, electronic, mechanical, photocopying, recording or otherwise.

RETURNING A PRODUCT

We expect our products to meet your expectations. However, if you do need to make a return, you MUST use our Returns Procedure.

Please contact our Customer Services Team on 01737 774077, or at info@stocksigns.co.uk, to obtain a returns reference, and subsequently making sure that the packaging is robust enough to avoid damage in transit. On certain returns a re-stocking charge may be applicable.

Our Services



Professional Site Survey

At Stocksigns we pride ourselves on our experience across many industries. We've successfully managed projects from airports and quarries, to schools and commercial premises.

We have experience with an extensive range of materials from vinyl graphics, through to large illuminated monoliths and everything in between.

If you are embarking on a project and need professional help and support, our site survey specialists are available to help. They can offer advice and expertise to ensure the wayfinding, health and safety and corporate branding in your workplace are legislation compliant and reflective of your company and brand.

Installation

Alongside our professional surveyors, Stocksigns have a dedicated team of fitters and installation experts.

The team operate throughout the UK and over our long history we have experience of installing everything from single signs to managing large scale installation projects.

We recognise the importance of working safely on-site and Stocksigns are proud to be accredited members of the SafeContractor scheme. This accreditation demonstrates that we operate under recognised high health and safety standards.

In addition, all our installation crews are CSCS (Construction Skills Certification Scheme) certified, Asbestos Trained in line with UKATA, certified by UPAF standards to operate Mobile Evaluating Work Platforms and hold current First Aid certificates.



Delivery Services



Orders for stocked standard signs will be despatched next day and will take between 2-3 days for delivery. Custom made orders will be despatched within 5 working days from receipt of order.

If you require these signs urgently, you may wish to use our premium service, where your signs will be despatched as priority. Please speak to the sales team regarding this service.

Export

Worldwide despatch is no problem. Our Export Sales Team is happy to provide quotations for any quantity of signs for any country.

Collection

At our Trade Counter in Redhill, signs can be purchased and/or collected between 8.30am and 5.00pm Monday - Friday.

Delivery Costs

The charge for packing, delivery and insurance to most UK mainland postcodes is FREE for standard orders over £50.

Standard Product Delivery Charges

- ▶ Orders under £20 (Depending on size and weight) - **£1.95**
- ▶ Orders up to £49.00 (Depending on size and weight) - **£6.75**
- ▶ Orders over £50.00 - **FREE**

Custom-made Signs Delivery Charges

- ▶ Orders less than 10kgs - **£7.50**
- ▶ Orders 10 - 20 kgs - **£13.50**
- ▶ Orders 20 - 50 kgs - **£25.00**
- ▶ Orders over 50kgs - **POA**

For **Premium Service** delivery rates, export, Scottish Highlands and off-shore locations, please contact our Sales Team on 01737 774077 for prices.

Mirrors and Fixings

Safety and Security Mirrors



These lightweight convex mirrors have a unique maconite backing with a chrome trim making the mirror completely weatherproof.

- ▶ Available in Acrylic
- ▶ General purpose, safety / security.
Ideal for internal or external use
- ▶ Suitable for all locations where accidental damage is a possibility

67 26333	450mm for wall mounting	£117.42
67 26334	660mm for wall mounting	£151.33
67 06822	450mm for post mounting	£117.42
67 06823	660mm for post mounting	£151.33

Traffic Mirrors

These heavy-duty Stainless Steel convex traffic mirrors are designed to assist road safety and can help eliminate blind spots at corners, concealed entrances and exits, car parks and junctions.

- ▶ Eliminate blind spots and ensure maximum visibility
- ▶ Manufactured from stainless steel with red/white reflective ABS frame
- ▶ Complete with heavy duty pole brackets (a wall bracket can be ordered separately if required, see below)
- ▶ Low maintenance
- ▶ Engineered to withstand extreme weather conditions



67 21095	600mm x 450mm with red and white border	£280.84
67 06820	600mm x 450mm with orange hood	£247.08
67 06825	600mm dia with orange hood	£202.57
67 06821	wall bracket	£25.00

Satin Chrome Supports for Panels and Signs with Holes



Holds signs away from the wall
Enhances sign appearance
Easy to keep clean

Also available in other standard finishes (please state when ordering):

- Black
- Polished chrome
- Polished brass



Prices available on application.

Top cable fitting and panel clamp

2 metre long cable with top fitting and panel clamp. Takes up to 7mm or 10mm thick panels.



Code	Description	Panel hole size	Panel thickness	Requires screw size	Price (each)
67 00411	12mm diameter supports/ 20mm length	9mm	up to 12mm	No.6	£4.20
67 00412	15mm diameter supports/ flush cap	6mm	-	No.8	£4.27
67 00413	16mm diameter supports/ 18mm length	12mm	up to 13mm	No.10	£9.29
67 00414	16mm diameter supports/ 40mm length	12mm	up to 20mm	-	£10.28
67 00417	25mm diameter supports/ 25mm length	13mm	2-18mm	-	£12.15
67 00418	25mm diameter supports/ 50mm length	13mm	up to 25mm	-	£12.95
67 00419	25mm diameter supports/ 75mm length	13mm	up to 25mm	-	£14.49
67 606735	2m long cable with top fitting and panel clamp	-	up to 8mm	-	£7.00
67 00410	Wall mounted clamp 15mm diameter/ 15mm length	-	up to 8mm	-	£4.05

* For use with glass and acrylic. Can hold 2 x 16mm thick glass. Prices for Satin Chrome only, other prices available on request.

enhanced /// CONTEMPORARY DESIGN

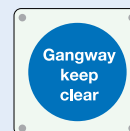
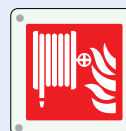
enhanced /// is a contemporary way of presenting your health and safety signs. This sign solution will complement modern surroundings whilst ensuring you comply with Health and Safety regulations.

enhanced /// utilises radius corners on strong 5mm clear acrylic with satin chrome panel supports. Any standard sign can be reverse printed improving the life of the sign.

enhanced /// is an interchangeable system. If you wish to swap signs of the same dimensions simply unscrew the satin chrome caps and replace the sign. This is especially useful for room location or room name signs.



Choose any NF sized sign in the catalogue to be produced in clear acrylic with four 8mm satin chrome panel supports.
450mm x 150mm POA



Choose any FF sized sign in the catalogue to be produced in clear acrylic with four 8mm satin chrome panel supports.
150mm x 150mm POA

Set apart from the rest



Satin chrome panel supports set the sign away from the wall create a 3-D effect. The sign's colour creates a subtle tint in the clear acrylic.



PROFESSIONAL ADVICE

We recommend that self-adhesive signs be applied to smooth, clean and dry surfaces, away from a direct heat source. Standard aluminium and rigid plastic signs can be supplied with all over self-adhesive backing.

We are also able to supply rear fixing bars for any 1 1/2 inch aluminium sign.

If you have a fixing requirement that is not featured on these pages, or for more details of the products shown, please call our Sales Team on 01737 774077.

Posts



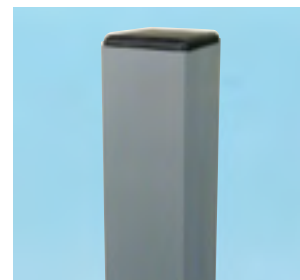
Aluminium post

- 67 27050 | £103.56 | 3.5m x 76mm
- 67 27055 | £58.55 | 1.75m x 76mm
- 67 27053 | £1.36 | Grey plastic cap



Galvanised Steel post: Grey powder coated

- 67 27026 | £99.64 | 3.5m x 76mm
- 67 27027 | £58.41 | 1.75m x 76mm
- 67 27053 | £1.36 | Grey plastic cap



Square post: Aluminium Grey powder coated

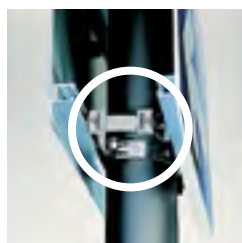
- 67 27060 | £126.89 | 3.5m x 50mm
- 67 23511 | £83.25 | 1.75m x 50mm
- 67 17061 | £1.67 | Grey plastic cap

Fittings



Stainless Steel Clip (76mm post)

- 67 27049 | £3.51 | (2 required per standard sign)
- Channel With 19mm VHB
- SP 17 | £13.18 | Per metre



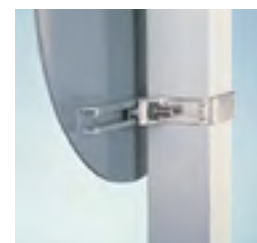
Stainless Steel Back to Back Clips (76mm post)

- 67 27057 | £9.26 | (2 required per pair of signs)
- Must be used in conjunction with other clips as shown.



Mild Steel Base Plates

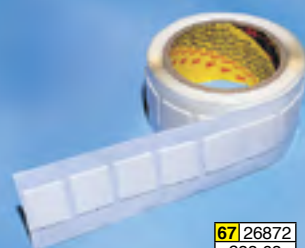
- 67 27054 | £5.69 | Mild steel post baseplate for stabilising sign erection.



Stainless Steel Clip for 50mm Square Posts

- 67 27063 | £5.60 | Note: Square posts and fittings are not for use with Traffic Signs.

Self-adhesive Pads



67 26872 | £33.63

Label Size: 25mm x 25mm.
140 labels per roll.



S/Steel Buckle Straps

- SP 15 | 24 inches | £6.33
- SP 16 | 36 inches | £8.11



Universal Clamp

- SP 20 | £3.14 | Two buckle straps and two Universal clamps are required to fix each individual sign



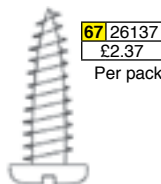
Cantilever double-sided sign system with directional sign fixings. Call 01737 774077 now for a quote.

Screws (sold in packs of 12)



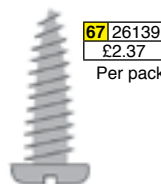
67 26134 | £2.37 | Per pack

S/steel yellow
For use with rigid plastic luminous signs



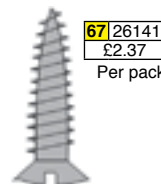
67 26137 | £2.37 | Per pack

S/steel white
For use with rigid plastic signs which have 4.7mm diameter holes.



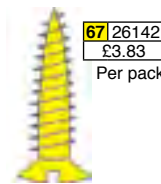
67 26139 | £2.37 | Per pack

S/steel natural
For external use with rigid plastic and aluminium signs which have 4.7mm diameter holes



67 26141 | £2.37 | Per pack

S/steel c/sunk
For use with our Prestige sign range



67 26142 | £3.83 | Per pack

Brass c/sunk
For use with our Prestige sign range

Our standard aluminium (10 Series) signs larger than DD (100x100mm) size are supplied with radius corners and 4.7mm diameter corner holes. All of the above screws would be suitable for use with these signs.

Rigid plastic signs do not come with holes or radius corners as standard, however these can be requested by the sales team at the time of order.

All signs DD (100x100mm) size or smaller now have square corners and all over self-adhesive backing on both aluminium and rigid plastic versions.

Also available for our Prestige range of signs are stainless steel screws (No.6 5/8") 66141 and brass screws (No.6 5/8") 66142, both radius head countersunk in packs of 12.

PROTECT YOUR SIGNS...USE P.O.F

P.O.F. can be overlaminated on any aluminium or plastic sign. Together with Seldon Graffiti Remover it allows:

- ▶ Easier removal of graffiti.
- ▶ Resistance to scuffs.
- ▶ UV protection - anti fade.
- ▶ Easier to clean
- ▶ Extends life of sign



Call our Sales Team on 01737 774077

Graffiti Remover
69 28072 | £30.13

Frames and Fixings

Suspended Frames Clips and Hanging Wires

Directional Fire Exit and other types of signs from our stock range size **RG** (600x200mm), **RF** (600x150mm), **KD** (300x100mm), **LD** (350x100mm) and **NF** (450x150mm) can be fitted into our anodised aluminium suspended frames for viewing from either one or both sides. Frames come complete with ceiling clips and improved suspension wires (signs are not included).

Additional suspension wires and clips can be bought separately, as shown.

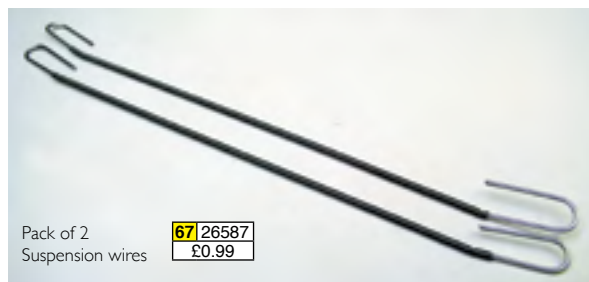
67 26149 Suspended Sign Frame **RG** size **£43.86**

67 26912 Suspended Sign Frame **RF** size **£40.41**

67 26923 Suspended Sign Frame **KD** size **£35.92**

67 23522 Suspended Sign Frame **LD** size **£36.56**

67 23523 Suspended Sign Frame **NF** size **£38.28**



Pack of 2
Suspension wires **67 26587**
£0.99



Pack of 2
Ceiling clips **67 26588**
£0.81

Wall Fixing Frames

Wall fixing frames with top entry for signs. For use with **JK** size, **KD** size, **MG** size, and **RG** size signs. Supplied complete with fixing screws. (Signs are not included).



Frame for **JK** size (250x300mm) signs. **67 21057**
£48.63



Frame for **KD** size (300x100mm) signs. **67 26022**
£39.01



Frame for **MG** size (400x200mm) signs. **67 26023**
£44.58



Frame for **RG** size (600x200mm) signs. **67 26024**
£46.90

VisionMX Frames



The single bar suspended frame is supplied with 2x suspension cables.

The 5mm thick signs can be printed both single or double-sided.

The bar comes standard in white, but can be sprayed over.

Both standard and custom-made signs are available in this range.

HOW TO ORDER YOUR VisionMX FRAMES

Step 1.

To order a Single Bar, prefix the desired sign code from our catalogue:



11007

with the material code for rigid plastic, **20**.

Step 2.

Add to this the desired size for the sign **KD** and then add the correct suffix code from the options in the price grid at the bottom of the page. **SBS1**

The resulting code should appear as follows:

20 11007 KD SBS1



			size in mm	250x300	300x100	400x200	400x300	450x150	450x600	600x150	600x200
VisionMX	Bar style	Print style	Suffix code	JK	KD	MG	MK	NF	NR	RF	RG
	Suspended	Single sided	SBS1	£41.56	£36.06	£42.70	£46.30	£44.98	£54.97	£45.62	£47.60
	Suspended	Double sided	SBS2	£53.59	£42.36	£55.60	£62.66	£59.17	£77.81	£59.95	£63.95

Poster Snap Frames

- ▶ Front opening snap frame
- ▶ Extruded aluminium
- ▶ Anti-reflective front face
- ▶ Lockable option
- ▶ Colour prices available

Silver Anodised
Snap Frame: (32mm frame)

67	00494	1524mm x 1016mm	£89.45
67	00479	1188mm x 840mm (A0)	£65.43
67	00480	1016mm x 762mm	£55.02
67	00481	840mm x 594mm (A1)	£35.05
67	00482	762mm x 508mm	£33.59
67	00483	594mm x 420mm (A2)	£29.45
67	00484	420mm x 297mm (A3)	£17.50
67	00485	297mm x 210mm (A4)	£12.86

Tamper Resistant Frame
(32mm frame)

No colour available

Opening Key required with this frame

67	05936	210mm x 297mm (A4)	£21.96
67	05937	297mm x 420mm (A3)	£29.84
67	05938	420mm x 594mm (A2)	£42.78
67	05939	594mm x 840mm (A1)	£61.92
67	05940	840mm x 1188mm (A0)	£74.31
67	06269	Opening key	£1.12



Snap Frame corner detail

Silver Anodised
Snap Frame: (25mm frame)

67	00490	762mm x 508mm	£31.64
67	00491	594mm x 420mm (A2)	£20.25
67	00492	420mm x 297mm (A3)	£11.24
67	00493	297mm x 210mm (A4)	£7.57



Silver Anodised



Snap frames provide a simple interchangeable signage solution.

NEXT DAY DELIVERY



Call: **01737 774077**

“ We are really pleased with the signs and would not hesitate to recommend and use again.

Jenny Adamthwaite
Cayman Auto Services ”

SITE SURVEY SPECIALISTS



Call: **01737 774077**

Key Lockable Frames



Key Lockable Poster Frame

67	05941	210mm x 297mm (A4)	£74.31
67	05942	297mm x 420mm (A3)	£88.95
67	05943	420mm x 594mm (A2)	£95.70
67	05944	594mm x 840mm (A1)	£113.72
67	05945	840mm x 1188mm (A0)	£149.74
67	05946	1524mm x 1016mm	£180.14

Key Lockable Pin Board Frame

67	05947	210mm x 297mm (A4)	£78.25
67	05948	297mm x 420mm (A3)	£84.44
67	05949	420mm x 594mm (A2)	£94.01
67	05950	594mm x 840mm (A1)	£111.46
67	05951	840mm x 1188mm (A0)	£154.25
67	05952	1524mm x 1016mm	£201.54

ASK US ABOUT

Magnetic lockable frames are also available.

Call our Sales Team on **01737 774077** for more information and pricing.

DON'T FORGET THE PINS!



67 06243 Pin board pins £1.72

Call: **01737 774077**

FIND MORE - ▶▶▶
For low ceiling mounting options
- see page 12

Display Options

Swinger Signs



Sign and finished graphics from as low as **£152.00!**

Swinger pavement signs can be supplied blank or printed with your graphics. Heavy duty rubber base and strong metal frame. This is one of our most popular pavement signs. Send us print ready artwork or ask our team to design this for you. These are stock items.

- ▶ Heavy duty rubber base
- ▶ 15Kgs total weight
- ▶ Blank face or printed with your graphics
- ▶ Ideal for outdoor use
- ▶ Finish - White/Black

67|06158 625mm x 430mm **£111.46** Blank sign price

67|06159 750mm x 500mm **£152.00** Blank sign price

'A' Boards



Quick poster change system, strong aluminium and steel construction and easy fold mechanism for night time storage.

- ▶ 32mm extruded aluminium frame
- ▶ Easy snap open poster change system
- ▶ Steel back panel
- ▶ Anti reflective front face
- ▶ Locking leg stays
- ▶ Available in a range of colours



Silver Anodised

67|06162 594mm x 420mm (A2) **£81.06**

67|06163 840mm x 594mm (A1) **£102.46**

67|06164 1016mm x 762mm **£199.28**

67|06165 762mm x 508mm **£154.25**

Colour

67|06166 594mm x 420mm (A2) **£157.63**

67|06167 840mm x 594mm (A1) **£162.13**

When ordering please add chosen colour after reference number. e.g 6_06166/Traffic red

Water Base Pavement Sign



Sign and finished graphics from as low as **£210.54!**

The ultimate pavement sign. The large capacity water fill base means this pavement sign will withstand very high winds. Transporting is easy as the base incorporates wheels for this purpose.

- ▶ Double-sided extruded aluminium frame
- ▶ Capable of withstanding high winds
- ▶ Easy snap open and close poster change system
- ▶ Wheels on base for easy transportation
- ▶ Finish - Silver anodised
- ▶ A1 base holds 26Kgs of water, A0 base holds 48Kgs of water

67|06160 840mm x 594mm (A1) **£171.14** Blank sign price

67|06161 1188mm x 840mm (A0) **£262.33** Blank sign price

Pin Boards



High quality felt pin boards with a silver anodised aluminium frame and a softboard back panel. Choose from grey or blue felt finishes. These fantastic pin boards are great value for money.

67|06173 900mm x 600mm (Blue) **£52.92**

67|06174 1200mm x 900mm (Blue) **£99.08**

67|06175 1800mm x 1200mm (Blue) **£140.74**

67|06176 900mm x 600mm (Grey) **£52.92**

67|06177 1200mm x 900mm (Grey) **£99.08**

67|06178 1800mm x 1200mm (Grey) **£140.74**

67|06243 Pin board pins **£1.72**

- ▶ Flame resistant fabric
- ▶ 8mm softboard back
- ▶ Aluminium frame
- ▶ Available with grey or blue felt