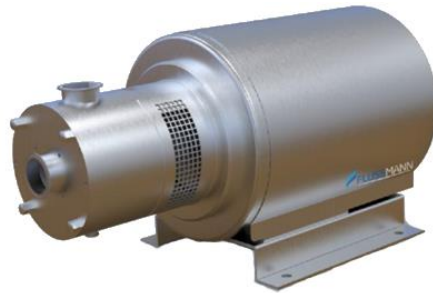


FIM Inline Mixer



Application

- The FIM series of the inline high shear mixers offers a possibility to pump, disperse, homogenise and emulsify products with one and the same equipment
- These mixers are especially useful in already existing plants
- They can work with a recirculation tank reaching the best efficiency after several passes of the product through the mixer
- Milk, Beer, Chocolate, Syrup, Cosmetics, Fragrance, Toothpaste, Detergents, Shampoo, Shoe Polish, Soaps, Emulsifier, Medicines, Paint, Dyes, Oil agents and much more

Materials

Parts in contact with the product:	AISI316L
Other Stainless-Steel Parts:	AISI304
Mechanical Seal:	C/ SiC/ EPDM
Gaskets:	EPDM
Surface finish Ra:	≤0.8µm

Design and Features

High shear, particle size reduction to less than 100 microns

Hygienic single mechanical seal

Various easily interchangeable working heads

Easy to clean

Standard connections: Clamp ISO-2852

Motor shroud

Options

Cooled or pressurised mechanical seal

Baseplate with antivibration legs

Trolley with/without control panel

Mirror polish Ra <0.5µm for the pharmaceutical applications

Other motor protections



Slotted Head
High shear and flow rate efficiency

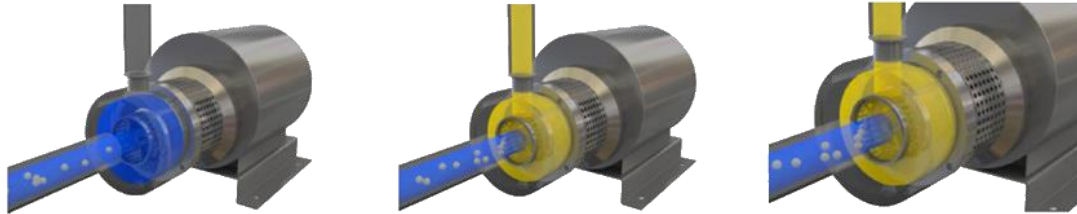


Disintegrating Head
Higher viscosity products



- It is characterised by a high shear due to an adjusted tolerance between the rotor and the stator and the high speed of the rotor
- This product is suctioned through the inlet and the rotor pushes it to the stator
- Passing through the slots of the stator the product is mechanically sheared, the particles are sheared by the rotor at the speed of more than 20 m/s
- Finally, the flow is hydraulically sheared leaving the stator through the slots at a high speed
- If the viscosity of the product is higher than 200cP, it is recommended to put an auxiliary pump at the inlet of the mixer, and if a high discharge pressure is required, it is necessary to assemble another auxiliary pump





DIMENSIONS

TYPE	Ø DNI	Ø DNt	Z	B	D	E	F	G	H	I	ØJ	ØK	L	M
FIM 30-011	1 1/2"	1 1/2"	70	595	114	175	190	230	325	355	290	15	245	285
FIM 30-040	2"	2"	86	700	140	232	256	300	400	445	350	19	355	410
FIM 30-075	2 1/2"	2 1/2"	86	850	140	252	253	350	450	490	400	19	355	410
FIM 30-185	3"	2 1/2"	98	1080	175	310	227	600	700	615	500	19	465	520
FIM 15-220	4"	3"	109	1115	204	310	269	600	700	615	500	19	465	520

CAPACITY

Flow (m ³ /h)	Power (kw)	Speed (rpm)
10	1,1	3000
20	4	3000
30	7,5	3000
35	18,5	3000
45	22	1500

