

MATERIALS

PRINT & MATERIALS

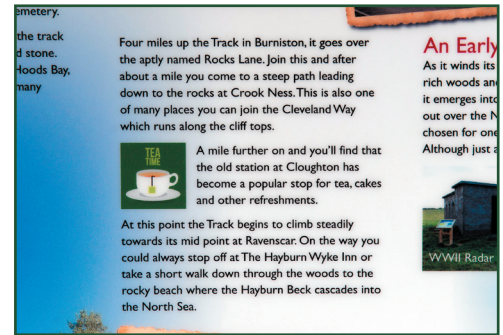
We undertake all printing in-house which gives us complete control over the process and print quality. Our state of the art Mimaki printer offers exceptional quality with clear text and bright vibrant colours. You will receive a paper proof for approval and can speak direct to our print & design team should anything need tweaking—you remain in control and will only sign off the proof when you are happy.



In-house printing



Vibrant colours



High quality text



Gauge boards after 9 years

DURABILITY

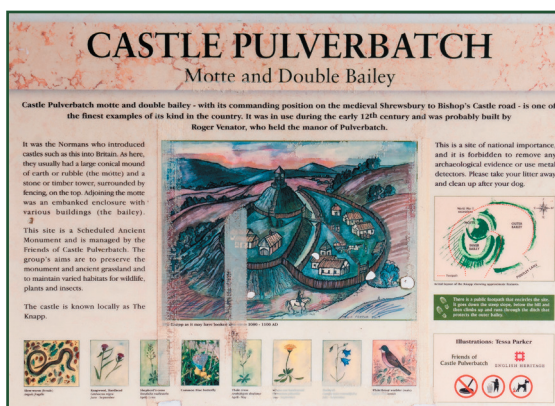
Shelley Signs specialise in producing robust and durable signs and graphics for public open spaces. Our print and finishing techniques have been developed to meet the weathering and anti vandal properties required in these environments as well as providing long term colour fastness.

Encapsulated Glass Reinforced Plastic (GRP) is our recommended material for durable signs. This page gives examples of products that have been on site for about 10 years, produced by Shelley using earlier printers but evidence of the durability we offer.

We produce water depth gauge boards using the same print and finishing techniques. This example has been in Pwllhelli Marina for 9 years. Continually exposed to tide and weathering this is the most demanding of applications and an excellent demonstration of how robust our GRP material is.

COLOUR FASTNESS

On the GRP option a 10 year warranty is offered against fading. This Castle Pulverbach sign was on site, South facing, for 11 years—the sign was replaced with an updated design but colours had showed almost no change over that period.

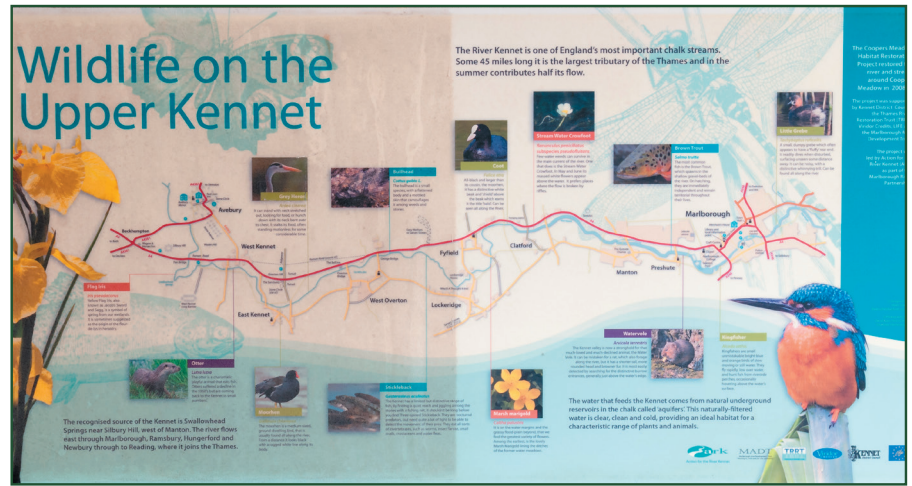


Interpretation panel after 10 years on site



CLEANING

A regular clean will help prolong the life of your signs and set off the display to best advantage. This Upper Kennet sign was on site for 8 years—one half has been given a good clean by ourselves to show how well the GRP material will clean and how colourfast the inks are.



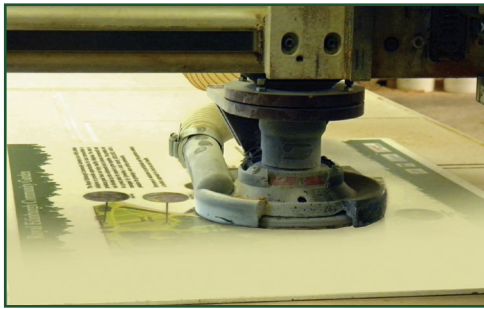
8 year old sign—one half cleaned



Cleaning graffiti

GRAFFITI

Graffiti can be easily cleaned off the surface of encapsulated GRP signs and is one of the reasons why the material is ideal for interpretation panels. We supply 'Antivan' which is an aerosol based product and very effective at cleaning graffiti and spray paint.



Recycling GRP

RECYCLING

At the end of their life please return old GRP signs to us. We can recycle by either a) Stripping them down, reprinting & re-encapsulating or b) By using as backers in new commissions.



GRP sign in situ

MATERIALS

Our Encapsulated Glass Reinforced Plastic (GRP) process is the recommended material for long term outdoor graphics—as explained on this page it offers excellent print quality, high durability & colour fastness. Lower specification materials including aluminium, Dibond, Polycarbonate and vinyl can also be quoted.



Part of our workshop

ENVIRONMENTAL

This is a complex area but we print direct to material with minimum material wastage, cure inks with cold LED lights, use no solvents and emit almost zero VOC's in the printing process. All materials are produced to the highest environmental standards.

A Testimonial

The removal of the earlier panel (supplied by you in 2006) proved to be very straightforward. The metal lectern frame is still as good as new and the information board we have replaced today is still in excellent condition. The only reason we replaced it is that site ownership has changed. We were very pleased with the durability of your products and will be placing several more orders with you over the coming months now we have acquired new sites.

Chiltern Society, (2016)
Roger Newman

Please request a sample of our robust Glass Reinforced Plastic material