

-LINE

DECORATIVE INTERIOR CLADDING FOR WALLS & CEILING

EASY FIT



EASY CLEAN



NO GROUTING



MAINTENANCE

FREE



ACCESSORIES



WIDE COLOUR

RANGE



COST

EFFECTIVE

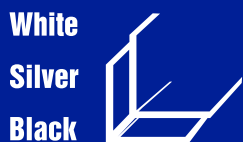


ACCESSORIES

Internal Corner



External Corner



Starter Trim



Coving



H-Trim



Clad Seal



Infill Trim



Marbles

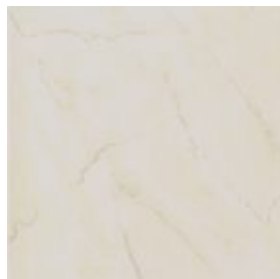
A CLASSIC MARBLE EFFECT
AVAILABLE IN 6 SHADES



GREY



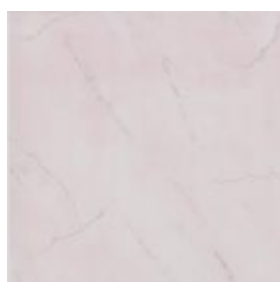
BLUE



BEIGE



ROSE



PINK

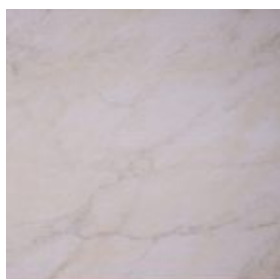


GREEN

ALL PANELS ARE 10mm THICK, 250mm WIDE AND 2.7m LONG. AVAILABLE IN PACKS OF 5.
*ALSO AVAILABLE IN 5.8m LENGTH

Granites

A VARIETY OF COLOURS
AND FINISHES FOR ALL TASTES



BEIGE



BLUE



GREY



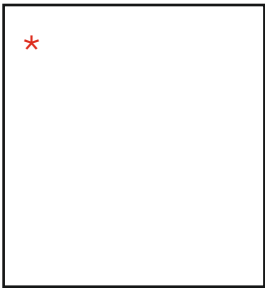
PINK



GREEN



STORM



SHINY WHITE



WHITE ASH

Black & White



SILVER BLACK



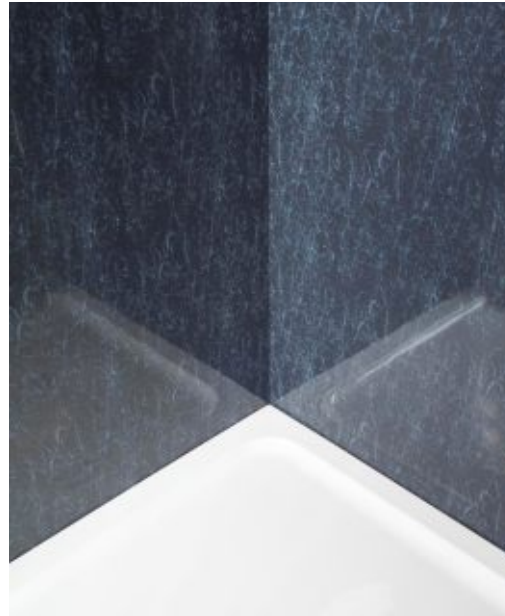
BLACK ASH



RANDOM BLACK



BLACK PEARL



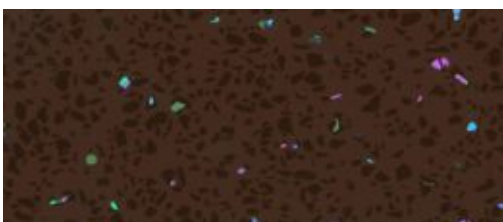
**ALL PANELS ARE 10mm THICK, 250mm WIDE AND 2.7m LONG. AVAILABLE IN PACKS OF 5.
*ALSO AVAILABLE IN 5.8m LENGTH**



WHITE



BLACK

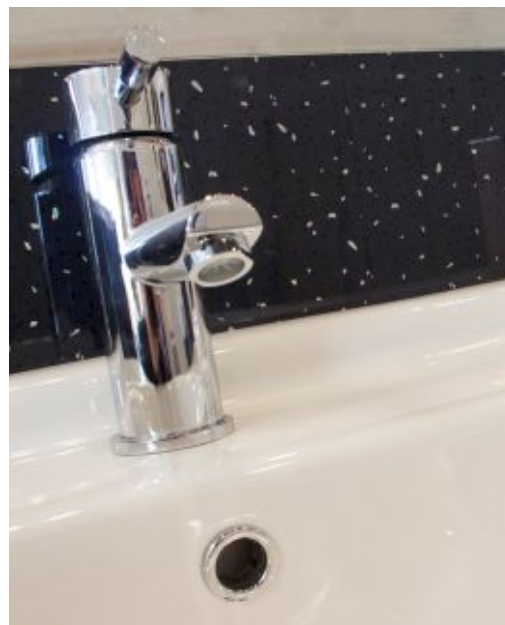


BROWN



BEIGE

Sparkle Range



ACCESSORIES

Internal Corner

- White
- Silver
- Black



External Corner

- White
- Silver
- Black



Starter Trim

- White
- Silver
- Black



Coving

- White
- Silver



H-Trim

- White
- Silver
- Black



Clad Seal

- White



Infill Trim

- Silver
- Gold



ACCESSORIES

Internal Corner

White
Silver



External Corner

White
Silver



Starter Trim

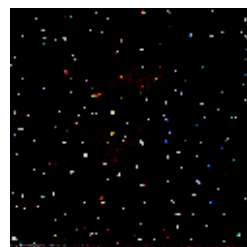
White
Silver



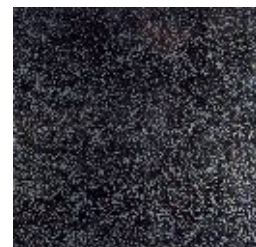
E LINE

E-LINE UPVC WALL PANELS

E-LINE - AN ECONOMIC RANGE OF 5mm THICK, 2.6m LONG PANELS



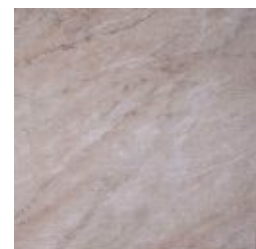
DIAMOND BLACK



BLACK NIGHT



DIAMOND WHITE



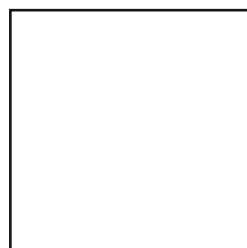
BEIGE STONE



GREY STONE



PINK STONE



BRIGHT WHITE

Wall Panels

COVERAGE

Each pack contains 10 panels

MAINTENANCE

Use hot soapy water and a soft cloth or sponge NOT SOLVENTS or ABRASIVES

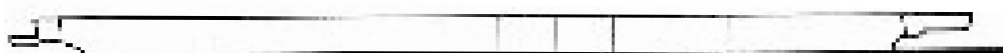
USAGE

Our panels are for internal use only

PREPARATION

All panels should be inspected before fitting. Colours may vary slightly from batch to batch

Ceiling plank with no Silver Highlights and all wall panels 250mm x 5mm thick



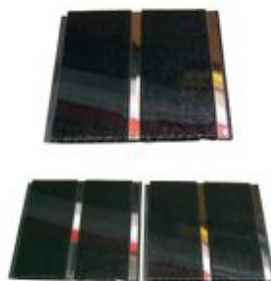
C-LINE

C-LINE - INCORPORATING AN INTEGRAL SILVER STRIP

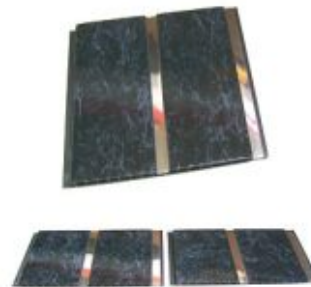
**DECORATIVE
INTERIOR
CLADDING FOR
WALLS & CEILING**



C-LINE WHITE



C-LINE BLACK PEARL



C-LINE RANDOM BLACK



C-LINE WHITE ASH

ALL PANELS ARE 10mm THICK, 250mm WIDE AND 2.7m LONG.

AVAILABLE IN PACKS OF 5.

***ALSO AVAILABLE IN 5.8m LENGTH**

Ceiling Panels

Tongue and groove jointing system makes fitting simple. For ceiling mounting, screws should be fitted every 30 - 50cm to existing ceiling or pre fitted battens.

Down lighters can also be fitted as long as panels are not heated beyond 60°C and it is recommended that L.E.D. lights are used due to overheating.

Ceiling plank with Silver Highlights 250mm wide x 10mm thick



ACCESSORIES

Internal Corner

White
Only



External Corner

White



Starter Trim

White



Infill Trim

Silver
Only



ACCESSORIES

Internal Corner



External Corner



Starter Trim



Clad Seal



Aqua-Clad

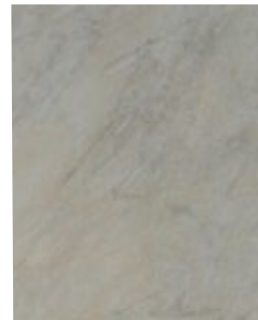
1000mm WIDE PANEL • 10mm THICK • 2400mm LONG • 2000mm limited range



GREY MARBLE



GREY SLATE



NATURAL STONE

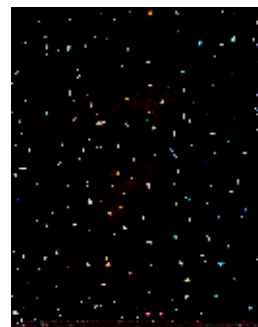
**WATERPROOF,
READY TO FIT
PANELS, IDEAL
FOR SHOWER
ENCLOSURE AND
ALSO BATHROOM
WALLS**



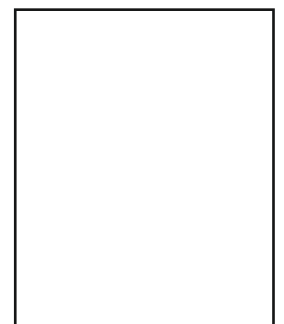
BLACK PEARL



WHITE SPARKLE



BLACK SPARKLE



GLOSS WHITE





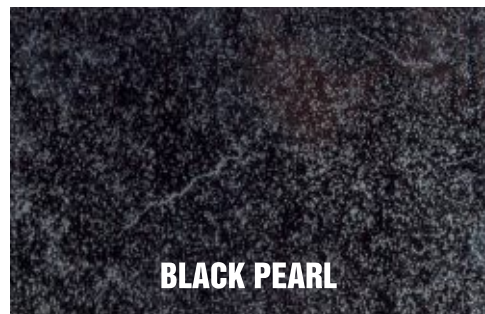
GREY MARBLE



GREY SLATE



NATURAL STONE



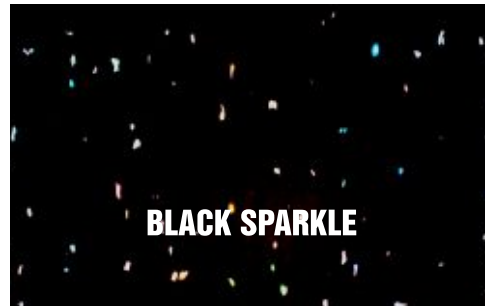
BLACK PEARL



WHITE SPARKLE



GLOSS WHITE



BLACK SPARKLE

Installation

The panels can be glued to the wall if the wall offers a flat surface. The background should be dry and in good condition. The panels can also be fixed using wooden battens.

It is recommended that in rooms with humid conditions treated timber and stainless fixings be used. Screws, pins or staples can be used.

Battens should be fitted approximately 30cm apart. For horizontal panelling, battens should be fitted vertically, and for vertical panelling, battens should be fitted horizontally.

The panels are interlocking. Start by cutting to the height required the initial edging or corner profile and then fix this to the wall (or ceiling). The first wall panel is also cut to height and fixed into place leaving the trailing edge to be fixed to the batten, ready for the next panel. The final panel will need to be cut with approximately 3mm of play to enable it to be fixed and fitted to the penultimate panel. We recommend checking the vertical as you progress with either a spirit level or plumb line. If using battens then insulation can be further improved by installing extra insulation material between the wall and the panel.

DO NOT USE

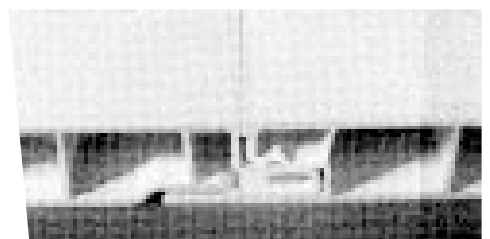
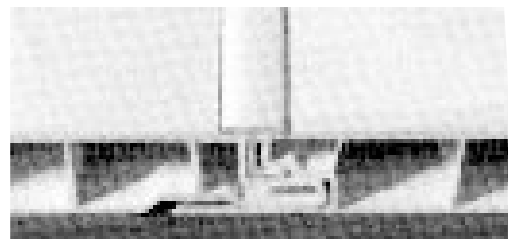
Abrasive solutions - Abrasive cloths or sponges - Cleaners containing bleach

DO NOT

Expose to direct sunlight - Expose to temperature in excess of 60°C



For full installation, search: **CELPLAS**



AN INFILL IS USED

A FLUSH EFFECT

Normal cleaning products and a soft cloth or sponge should be used.

Never use abrasive products for cleaning.

We advise that all panels should be visually inspected prior to fitting.

Colours may vary slightly from batch to batch.



CELPLAS PVC LTD

PVC-U MAINTENANCE FREE BUILDING PRODUCTS

Unit 1, Fox Industrial Estate, Holyoake Avenue, Blackpool FY2 0QX

Telephone: 01253 591717 Fax: 01253 591516 Email: info@celplas.co.uk

www.celplas.co.uk