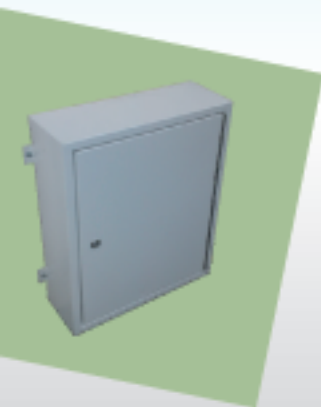
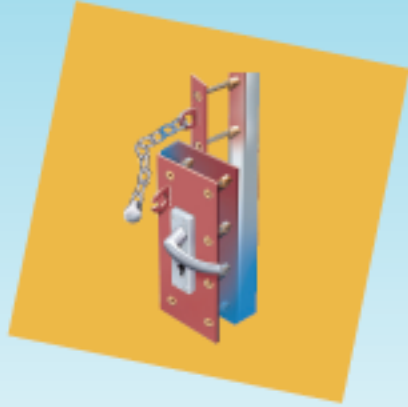
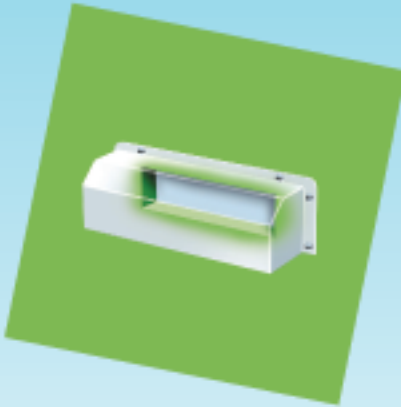


JML HARDWARE

INNOVATIVE PROTECTION



FABRICATION & ENCLOSURE SPECIALISTS

GAS AND ELECTRIC METER REPAIR BOXES



OB1 universal overbox

Our range of aluminium overboxes have been specifically designed as new covers for broken or vandalised gas and electric meter boxes.

OB1 UNIVERSAL OVERBOX

- Designed to fit over most meter boxes.

- Reinforced door
- Two quarter turn budget locks
- Fixed internally to the brickwork for added security
- Full length 316 stainless steel piano hinge
- To fit over maximum size 700 high x 550 wide x 100 deep
- Specials can be made on request
- Powder coated aluminium



Architrave overboxes

ARCHITRAVE OVERBOXES

- Different sizes to fit most meter boxes.

See enclosed specification sheet

- Fixes to inside of existing meter box
- Two quarter turn budget locks
- Full length 316 stainless steel piano hinge
- Complete with fixings
- Ideal for use when space is limited
- Specials can be made on request
- Powder coated aluminium

GAS AND ELECTRIC METER REPAIR BOXES

OB3 OVERBOXES

- Designed to fit over most meter boxes, when the architrave is damaged or is recessed because of exterior cladding.

- Front fitting design
- Two quarter turn budget locks
- Fixed externally to the brickwork for added security
- Full length 316 stainless steel piano hinge
- Available in five sizes 600h x 480w x 80d, 650h x 450w x 50d, 700h x 500w x 50d, 800h x 580w x 50d, 800h x 580w x 100d
- Complete with fixings
- Specials can be made on request
- Powder coated aluminium

OB2 HOOK ON OVERBOX

- Used to replace surface mounted gas and electric boxes.

- Hooks on to existing back plate and fixed to the wall with screws provided
- Two quarter turn budget locks
- Full length 316 stainless steel piano hinge
- To fit over maximum size backplate 520 high x 450 wide
- Specials can be made on request
- Powder coated aluminium



OB3 overboxes



OB2 hook on overbox

GAS AND ELECTRIC METER REPAIR BOXES



OB10 semi submersible lids



OB20 Electric overbox



OB22 Water Meter Overbox

OB10 SEMI SUBMERSIBLE GAS METER REPLACEMENT LID

- 2mm thick aluminium lid
- Full length 316 stainless steel hinge
- Quarter turn budget lock
- Complete with fixings
- Available in two sizes 480w x 360h & 410w x 460h
- Specials can be made on request

OB20 EXTERNALLY FITTED ELECTRIC OVERBOX

- Large electric overbox with external fixing lugs
- Fitted over existing surface mounted electric box which cannot be removed
- Size: 670 high x 540 wide x 250 deep
- Full length 316 stainless steel piano hinge
- Powder coated aluminium
- Two quarter turn budget locks and key

OB22 WATER METER OVERBOX

- Made from powder coated aluminium
- Full length 316 stainless steel piano hinge
- One quarter turn lock with triangular key
- Front fixing design for securer fixing
- Dimensions 250h x 350w x 35d
- Complete with all fixings



NEW BUILD PLASTIC GAS & ELECTRIC BOXES

THE SEMI RECESSED ELECTRIC AND GAS BOX

Electric

The most popular electric meter box, the standard flush fitted electric meter box houses any domestic electric meter and is designed to mirror the standard built-in gas meter box. With customer choice of cable entry positions this universal version can be used in any area of the UK.

- Overall size: 595 high x 409 wide x 210 deep
- Brickwork opening: 535 x 365 x 150
- Hockey stick available
- Complete with chipboard back plate

Gas

The built-in gas meter box houses all domestic U6 and G4 meters and is designed to mirror to standard flush fitted electric meter box. This box is fully approved to National Grid Gas (Transco) specifications.

- Overall size: 595 high x 409 wide x 210 deep
- Brickwork opening 530 x 370 x 150
- Hockey stick available
- Complete with holding bracket for meter

THE MK2 SURFACE MOUNTED ELECTRIC METER BOX

The Mk2 version has been introduced due to demand for a smaller version of the surface mounted electric meter box and matches the Mk2 surface mounted gas meter box. Unlike the Mk1 versions, the cover can be removed in order to facilitate easy fitting and maintenance of the box and the meter installation.

- No requirement for a wall cavity, installed on the face of the brickwork/stonework
- Now features a detachable cover and door for ease of installation and damage replacement
- Fire retardant to E.S.I. Standard 12-3
- Manufactured in glass reinforced plastic
- Size: 503 high x 408 wide x 224 deep



Semi Recessed Gas Box



MK2



NEW BUILD PLASTIC GAS & ELECTRIC BOX



Semi Submersible
Gas Meter Box

THE SEMI SUBMERSIBLE GAS METER BOX

An unobtrusive brown meter box that is designed to be partially buried in the ground. Developed to house the lower cost metal cased U6 and G4 meters when used with a water resistant seal (sold separately), this meter box is fully approved by Sensus Metering, Krom Schroeder, GTC, IPL, Core Utilities and British Gas Connections.

Our design and research department are looking at different products.

We will look at any idea whether large or small and pride ourselves on getting quotes and prices to our customers within 72 hours.

Our list of customers is expansive and includes:

- **Councils**
Wolverhampton MBC, Dudley MBC, Manchester City Council, Trafford Council, Sandwell MBC, Hull City Council, Edinburgh Council, Leeds City Council, Doncaster Council and many more.
- **Housing Associations**
North British HA, Sanctuary HA, William Sutton Trust, The Guinness Trust, Maritime HA, Riverside HA, Arena HA and many more.
- **Contractors**
Wolseley Centres, Travis Perkins, Jewsons, Mears and many more.



KITCHEN CARCASS HINGE AND DOOR HINGE REPAIR KITS

AHSB1 KITCHEN CARCASS REPAIR KIT

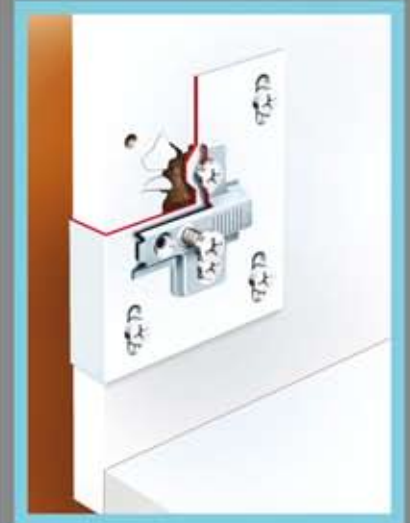
- Neatly covers the damaged carcass area
- Adjustable for ease of fitting
- Complete with new base plate and all fixings
- Saves the expensive replacement of carcasses
- Eliminates costly repairs
- Ideal for 90% of kitchen units or bedroom doors
- Powder coated mild steel

AHSB2 & AHSB3 LIFT OFF HINGES

- Kitchen repair kits are also available for lift off hinges
- These repair hinges are handed and come in boxes of 5 left hand and 5 right hand pairs
- Boxes can be split for your convenience
- Powder coated mild steel

AHSB4 KITCHEN DOOR REPAIR KIT

- Saves the need for a replacement door
- No need to match other doors if discontinued
- Eliminates costly repairs
- Saves 100's of pounds in costly replacements
- Powder coated mild steel

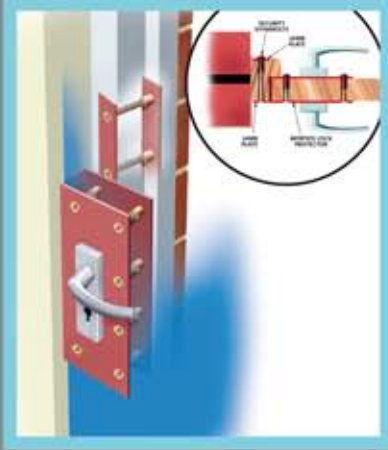


AHSB1



AHSB4

DOOR PROTECTION



Dri-guard mortice lock and jamb protector



EXTERNAL DOOR OPENING INWARDS

- Strengthens the door against forced entry
- Covers any damaged or spliced timber
- Available for 2 or 3 inch mortice locks
- Two plates are included to protect the jamb of the door
- Comes complete with anti tamper bolts
- Powder coated mild steel

EXTERNAL DOOR OPENING OUTWARDS

- Prevents doors from being jemmied open
- Covers the normally exposed locking mechanism
- Ideal for schools or external fire doors
- One plate is included to protect the jamb
- Available for 2 or 3 inch mortice locks
- Comes complete with anti tamper bolts
- Powder coated mild steel

NEW DOOR LOCK PROTECTOR

- Made to suit any locking mechanism
- Strengthens existing lock against forced entry
- Covers any damaged timber
- Designed to allow tenant to use lock as additional handle inside and out
- Comes complete with anti tamper bolts
- Powder coated mild steel



New door lock protector

LETTERBOX PROTECTION

DRI-BOX LETTERBOX COVER

- No more illegal access through letterbox
- Still allows mail to be delivered
- Made from high quality aluminium
- Available in white or brown
- Complete with fixings
- Dimensions 325w x 75h x 62.5d



Letterbox cover

ANTI VANDAL INTERIOR LETTER BOX HOLDER

- For internal use (covers the inside of your letterbox)
- Accommodates all normal post including newspapers
- Key lock - 2 keys provided
- Offers protection for homes, businesses, schools and places of worship, all of which are under increasing risk from arson attacks and mindless vandalism
- Simple to install and maintain
- Made from sheet steel
- Complete with 316 stainless steel piano hinge
- Powder coated in white
- Dimensions 550h x 320w x 100d
- Complete with fixings



CIGARETTE BINS



New Cigarette Bin

THE NEW JML HARDWARE CIGARETTE BIN

- Made from brushed aluminium
- Cylindrical design for good looks
- Cigarette extinguishes when dropped in box
- Stumps can be emptied from the bottom
- Securely fitted to wall with rag bolts supplied
- Key with brush for cleaning also supplied
- Dimensions: 490h x 75mm diameter
- Available with solar panel for nighttime illumination

THE BEST VALUE CIGARETTE BIN IN THE UK

- Stainless steel construction
- Weather resistant hood
- Lockable door with separate bin for ease of disposal
- Size: 300h x 300w x 100d Weight: 2.4kgs
- Fixings supplied for wall mounting
- 100's already supplied to major brewery groups
- Best value in the UK



Best Value Cigarette Bin



GENERAL MAINTENANCE PRODUCTS

DRI-COWL AIRBRICK COVER

- Prevents the full force of wind entering the dwelling
- Still allows adequate ventilation
- Designed so water cannot penetrate the property
- No need for tenant to internally block off airbrick negating it's function
- Also useful on bathroom and kitchen extracts allowing the fan to work properly against strong prevailing winds
- Made from high quality aluminium and powder coated in brown. Other colours available on request



Airbrick cover

PIPE PROTECTOR RANGE

- Protects the bottom section of pipes from damage or vandalism
- Prevents climbing for illegal access
- Can be made for covering ducting or cables
- Made from galvanised steel
- Optional powder coating if required
- Supplied in 2.4 metre lengths
- PIPEPRO dimensions 150h x 155w
- RAINPRO dimensions 125h x 130w
- DRAINPRO dimensions 75h x 75w
- COPPERPRO dimensions 50h x 50w
- Variations and lengths can be made on request



Drain pipe cover

JML Hardware – Innovative protection you can trust.

For over twenty-five years, JML Hardware has been supplying high quality maintenance hardware for local authorities and housing associations.

Based in Wigan, JML Hardware combines skill and expertise with years of experience to ensure that each and every product is produced to the highest standards, providing top quality solutions for a whole host of maintenance-related issues.

JML's product portfolio is extensive, and includes items such as repair kits for kitchen doors and carcasses, gas and electric meter box covers, cigarette bins, letterbox security covers, door lock protectors, dri-storm window protectors and air brick covers. This list is by no means exhaustive, with the entire range being available to view online at www.jmlhardware.com.

JML now stock a full range of Gas & Electric Meter Repair Boxes and lids. All boxes and lids are made from aluminium and come complete with two quarter turn budget locks and full length 316 stainless steel piano hinge.

A complete range of galvanised pipe protectors are now available from stock for next day delivery with four different sizes to protect copper pipe, drainpipe, rainwater pipe and soil pipe. We also can make special sizes for delivery within 5 working days from receipt of order.



If you require any additional information please contact us on:

Dri-Sil House : PO Box 109 : Wigan : WN4 9FY

T: **01942 715678** F: **01942 715679**

E: info@jmlhardware.com W: www.jmlhardware.com

JML HARDWARE
INNOVATIVE PROTECTION