

Toilet Cubicle Regulations: Approved Document T

Approved Document T comes into effect from 1st October 2024, read this article to understand the new toilet cubicle regulations and provisions which focuses on single-sex and superloo designs.

What is Approved Document T?

The new [Approved Document T](#), effective from 1st October 2024, is an addition to the Building Regulations 2010 to address toilet provisions in buildings other than dwellings. This update responds to the rise of gender-neutral washrooms and superloo designs being implemented across the UK. Concerns have been raised by women, the elderly and disabled individuals, who feel disadvantaged by the conversion of publicly accessible toilets into gender-neutral washrooms. Issues mentioned include increased wait times in shared queues, decreased choice, and reduced privacy and dignity. Approved Document T aims to [ensure that washroom provisions are inclusive](#) and considerate of all users, regardless of ability, age or sex.

This document does not apply to:

- [Washrooms for schools](#) – refer to the [Department for Education Regulations & Education Act 1996](#).
- Residential rooms in care homes – refer to the [Care Standards Act 2000](#).
- Premises used for early years – refer to section 20 of the [Childcare Act 2006](#).
- Cellular accommodation in custodial facilities.

Washroom Facility Requirements

Toilet accommodation in buildings must provide reasonable provisions for male and female single-sex toilets, intended for the exclusive use of persons of the same sex. Washbasins and hand-drying facilities should be either within the toilet cubicle or room or in a separate area intended for use only by persons of that sex.

If space constraints prevent the provision of two single-sex areas, universal toilets should be provided. Universal toilets are defined as fully enclosed rooms containing a WC, washbasin and hand-drying facilities, intended for individual use by persons of either sex. The available space will vary from building to building. Once reasonable provision has been made for single-sex washroom facilities, any remaining space can be considered for universal toilets.

There are four types of toilet accommodation suitable for meeting requirements of Approved Document T.

Type A – Fully enclosed self-contained ambulant universal toilet.

Type B – Fully enclosed self-contained universal toilet.

Type C – Ambulant single-sex toilet cubicles (not self-contained)

Type D – Single-sex toilet cubicle (not self-contained)

Type B – Universal Toilets

Universal toilets, also known in the washroom industry as **Superloos**, are fully enclosed rooms containing a WC, washbasin, mirror and hand-drying facilities for individual use. These washrooms are intended for everyone, regardless of sex, and should not be designated for a single sex. There should be no shared hand-washing facilities in circulation spaces outside the washrooms; all amenities should be contained within the room.

The room should offer complete privacy with full height doors and floor to ceiling partitions. Doors can open either inward or outward and should be accessible through primary circulation routes, avoiding passage through single-sex washrooms.

There are various design options for universal toilets, largely determined by the available space in the building. Superloo washrooms typically include a WC duct set and vanity unit running the depth of the room, with the potential for **mirrorbox units** to conceal accessories. Bushboard Superloos can be designed within partition walls or with **full height, privacy toilet cubicles**, both of which create an enclosed room compliant with Approved Document T guidance.

For some spaces, a CombiUnit might be best suited. This is a **basin and WC vanity unit** which is better suited to wider layouts. These can also be specified within partition walls or within a **full height toilet cubicle**.

It's important to note that universal toilets are not **designed to be wheelchair accessible**, so suitable provisions must be made for users requiring accessible facilities.

Key Dimensions for Universal Toilets

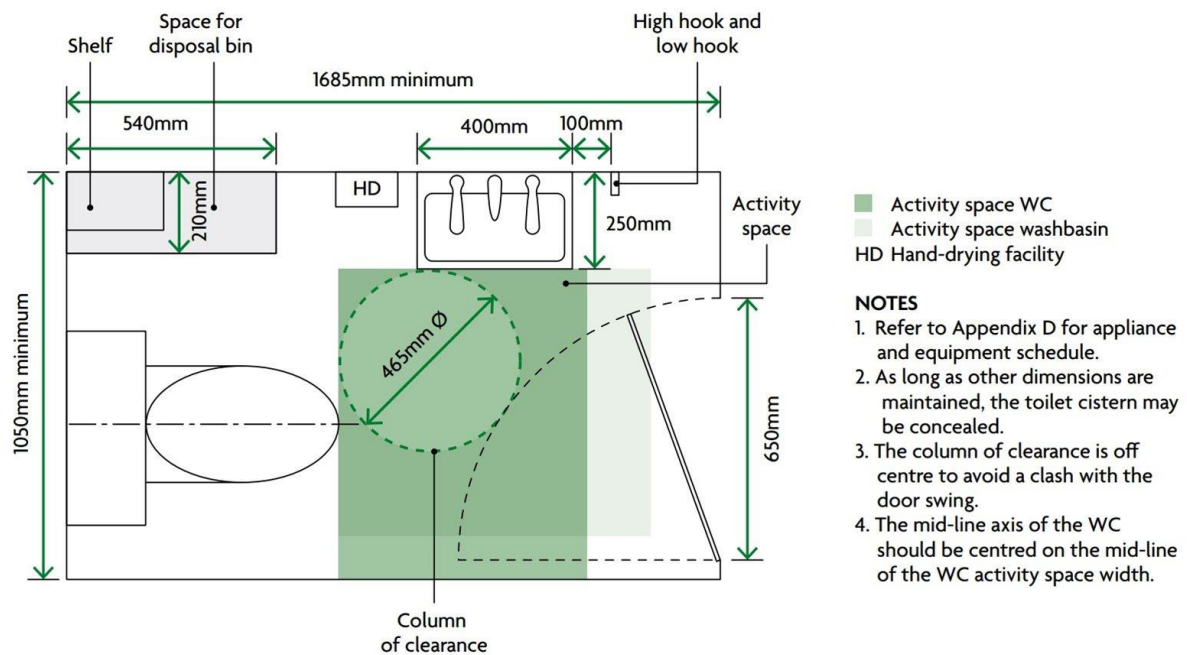
Minimum overall dimensions: 1050x1685mm

Minimum effective clear opening width: 650mm

Door Opening: Self-closing, outward preferable

Minimum turning circle: 465mm

Minimum activity space in front of WC: 600mm wide x 800mm deep



Type B - Universal Toilet Cubicle Dimensions

Type D - Single-Sex Toilet Cubicles

Single-sex toilet cubicles are intended for the exclusive use of persons of the same sex. Washbasin and hand drying facilities can be provided in a communal area which is designated for use by only persons of that sex. Although full height is not a requirement with single-sex toilet cubicles, **toilet cubicle heights should be considered** to offer maximum privacy to users.

Urinals should only be provided in male single-sex toilets and should be separated by modesty screens. If multiple urinals are provided, at least one urinal should be at a lower height to accommodate different user needs.

There is also the option to design **fully self-contained toilets** (universal toilets) instead of traditional toilet cubicles if desired. One benefit of Bushboard Superloos is their suitability within toilet cubicles, allowing a run of self-contained cubicles while maintaining a unified design. The layout of the washrooms, including entry, exit, and usage, always prioritise the safety, privacy and dignity of users.

Key Dimensions for Single-Sex Toilets

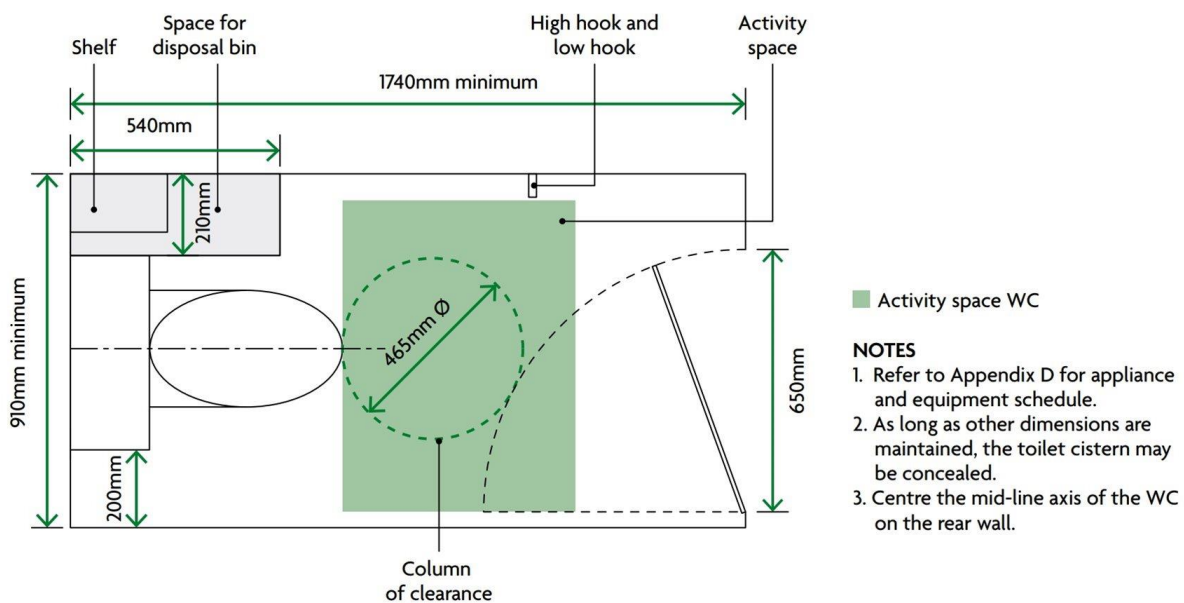
Minimum overall dimensions: 910x1740mm

Minimum effective clear opening width: 650mm

Door Opening: outward opening preferable as long as opening onto adequately sized shared hand wash facilities

Minimum turning circle: 465mm

Minimum activity space in front of WC: 600mm wide x 800mm deep



Type D - Single User Toilet Cubicle Dimensions

Type A & C – Ambulant WCs

Ambulant WCs are suitable for use by ambulant disabled individuals, people with reduced mobility, or those who would benefit from a larger toilet cubicle with grab rails, such as individuals with luggage, sports injuries or pregnant women. Where compliance with Part M does not impose a requirement, toilet provision can be either Type A or B for universal toilets or Type C or D for single-sex toilets.

Ambulant washrooms, whether universal or single-sex, should be equipped with a horizontal closing bar on the inside face of the door, preferably with an outward opening. The space within the room or cubicle should be increased to allow for easier movement. There should be a horizontal grab rail on both side walls of the toilet, each with a vertical grab rail set in an 'L' shape. Additionally, there should be a visual contrast between the toilet pan seat and sanitaryware to aid those with visual impairments.

In line with the guidance provided in Section 5 of [Approved Document M](#), a wheelchair-accessible unisex toilet should always be provided if space does not allow for anything else.

Single-sex toilets should then be the next suitable facility provided. Where space reasonably prevents single-sex toilets, then universal washrooms are the preferred.

Key Dimensions for Ambulant WCs

Minimum overall dimensions: Type A universal toilet: 985mm x 2125mm, Type C single-sex toilet: 920mm x 1465mm

Minimum effective clear opening width: 750mm

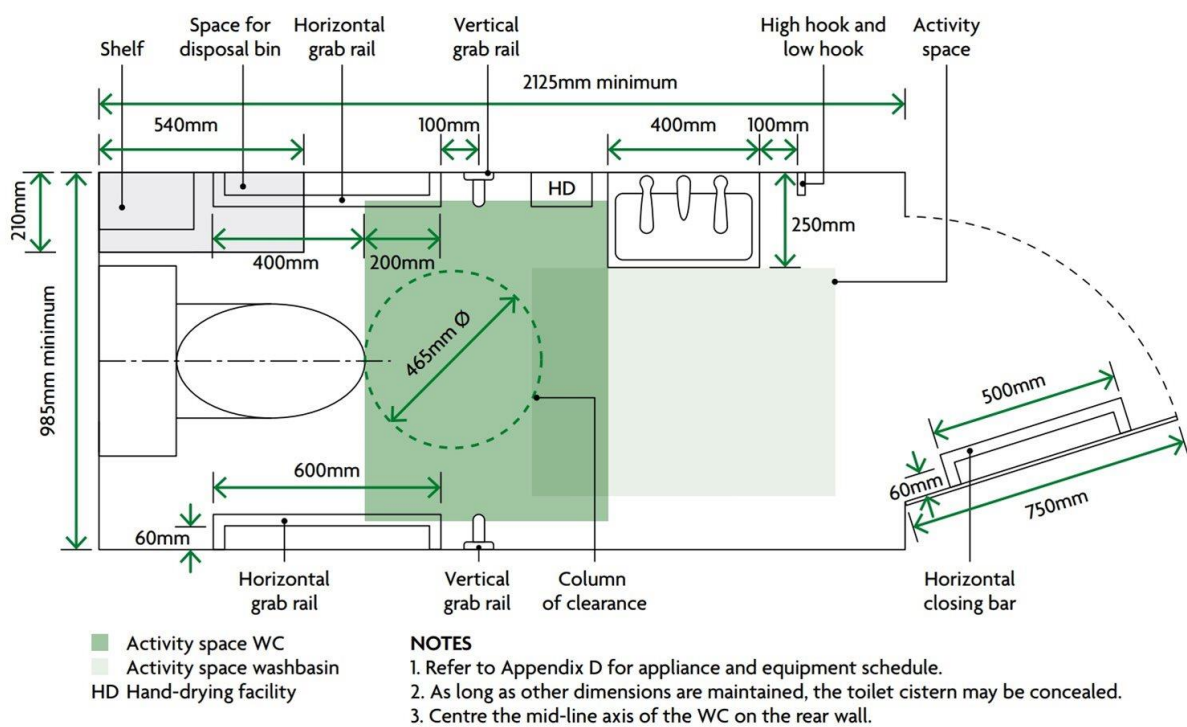
Door Opening: outward opening

Minimum turning circle: 465mm

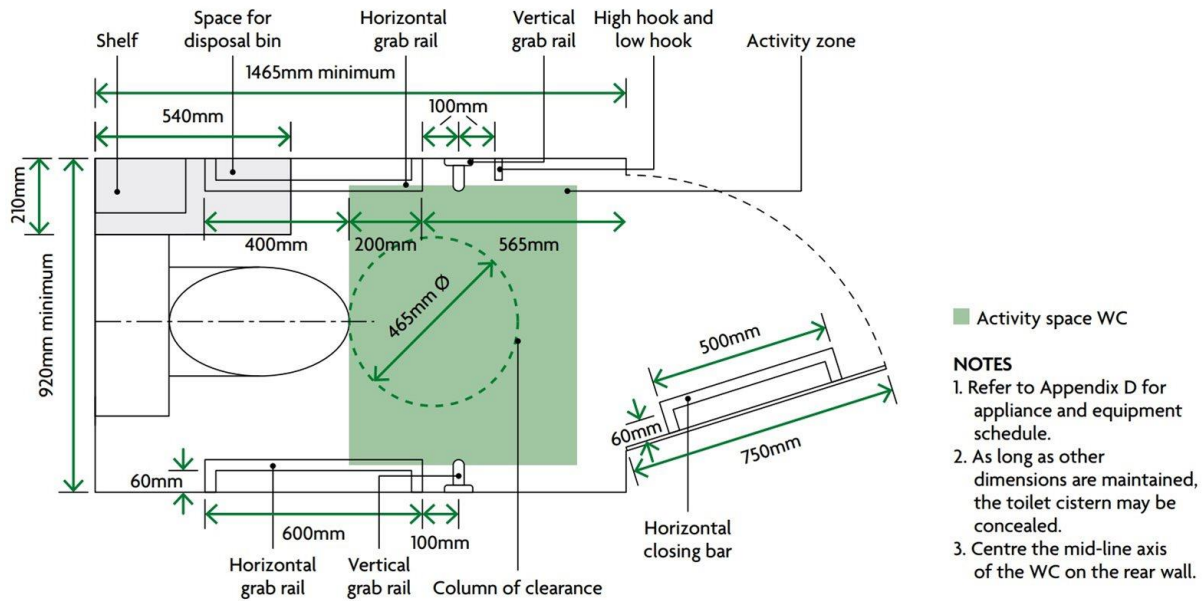
Minimum activity space in front of WC: 600mm deep x 800mm wide

Grab rails: 600mm length with 19-35mm diameter

Door closing bar: 500mm length with 19-35mm diameter



Type A - Ambulant Universal Toilet Cubicle Dimensions



Type C - Ambulant Single User Toilet Cubicle Dimensions

Common Design Provisions

Now you understand the 4 types of toilet accommodation in the Approved Document T and the differences between them we can now look at the common design features and accessories that should be provided in all 4 washroom designs.

Toilet Door Design and Locks

- Toilet doors should not obstruct any emergency escape routes or encroach on activity space within the cubicle.
- Toilet doors must be fitted with light action locks operable with a closed fist.
- Toilet doors must include an emergency release mechanism. **Bushboard toilet cubicles** are fitted with a grooved indicator which can be slid with a pen or screwdriver to open and hinges are able to be set to allow for doors to be lifted off in case of emergency.

Washroom Accessories

Each toilet cubicle or room should include:

- Toilet paper dispenser.
- Space for a disposal bin, minimum 540mm x 210mm.
- A high hook at 1685mm above finished floor level.
- A low hook at 1050mm above finished floor level.
- A small shelf, 250mm x 150mm at 780-800mm above finished floor level.

Wayfinding and Signage

- Clear and appropriate wayfinding signage should be provided.
- Standardised signage symbol should be used for universal toilets.

(insert image of universal toilets symbol)

Visual Contrast and Lighting

- Visual contrast should be maintained throughout the washroom:
 - Between floor and wall junctions.
 - Door and door openings.
 - Lock bodies and faceplates with surface of the door.
 - Furniture with surfaces.
- Good lighting should be ensured for visibility through circulation spaces and within washrooms.
- **Bushboard's standard colour range** provides LRVs (Light Reflectance Values) with a recommended 30-point difference for suitable visual contrast.

Additional Considerations

- If using **integrated panelling systems** or vanity units, internal space may need to be increased to maintain adequate activity space and turning circle, as well as space for disposal bins and door swing.
- **Baby change facilities** should not be located within any of the four types of toilets specified unless it is the only sanitary facility provided in the building. For guidance on baby change facilities, refer to section 5 of Approved Document M.

Conclusion

In conclusion, Approved Document T emphasises the avoidance of communal hand washing and drying facilities shared by different sexes. This approach aims to uphold privacy, dignity and security for all washroom users.

Bushboard Washrooms' products are designed to comply with Approved Document T while also prioritising innovative and visually appealing washroom designs. We maintain a commitment to style and overall aesthetic value, ensuring that our finished washrooms are both accessible and striking in appearance.

If you require help ensuring your next washroom project complies with Approved Document T, get in touch today washrooms@bushboard-washrooms.co.uk or **01536 533620**, alternatively **fill out the contact form**. Need an estimate? Email us the dimensions and product requirements and we will provide a quotation within 48 hours. Our specification manager is also available to talk through the project in more detail and recommend suitable products from our range.

-
-
-
-

 HM Government

The Building Regulations 2010

Toilet accommodation



APPROVED DOCUMENT

Requirement T1: Toilet accommodation