



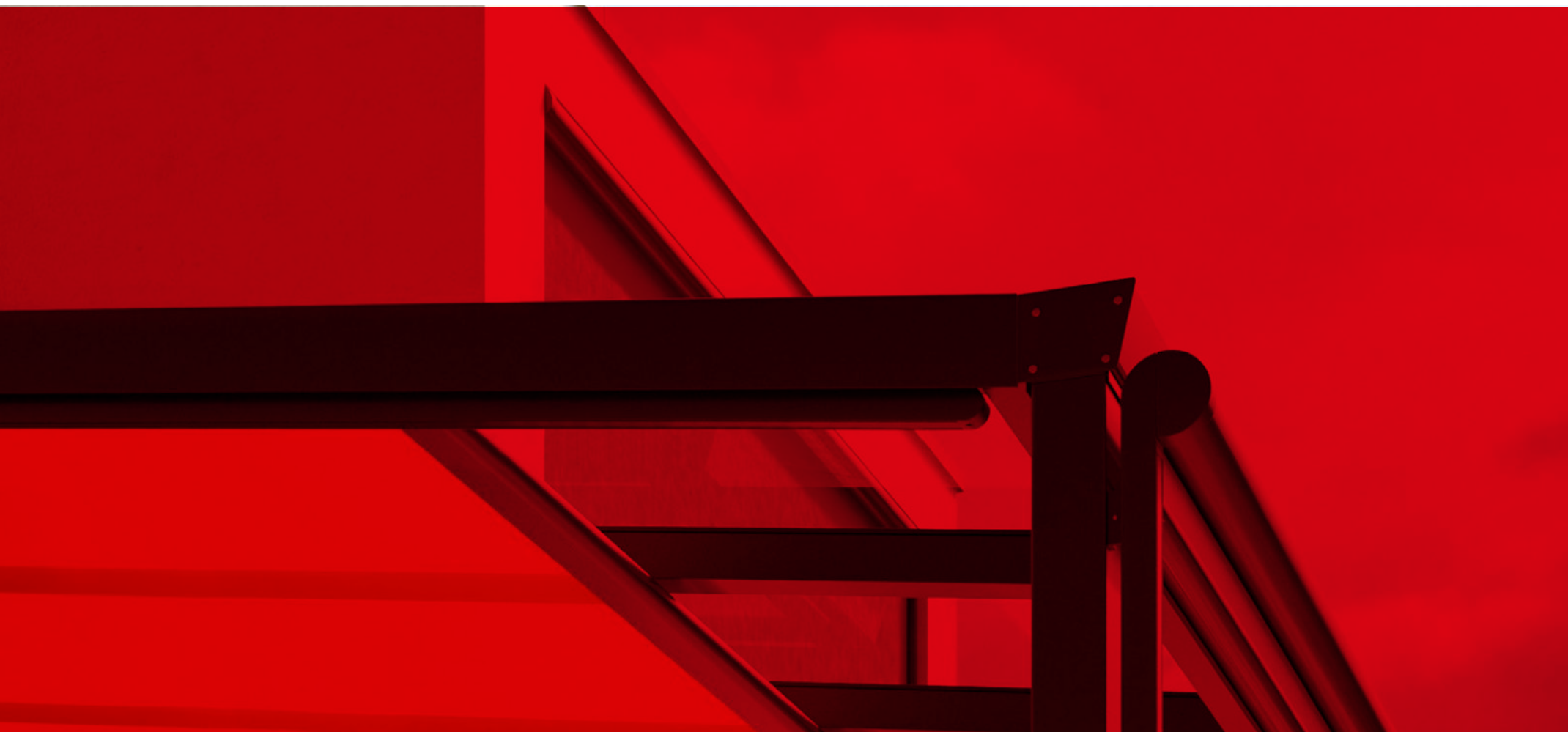
Harness pleasant natural light  
**and make those special places even more so.**

Designer Awnings for Conservatories, Glass Rooms and Glass Canopies

**markilux**  
The best under the sun



The best under the sun.  
Create the most alluring shade  
in the world.







There is always a clear line  
to our designs which  
**usually ends in a red dot.**

#### Enjoying feel-good temperatures

Unobstructed views into the garden in a protected environment: conservatories and covered patios offer the best of both indoors and outdoors. So that you can enjoy all those precious moments without distraction and discomfort, markilux designer awnings protect your conservatory and glass canopy from the powerful rays of the sun. Installed either above or below the glass, they ensure a comfortable living environment and reliable protection from glare. markilux textile shading systems are as aesthetically pleasing to the eye as they are sturdy. Right down the line. Award-winning. Good.

markilux designer awnings have received a multitude of awards:



| Brand



| Website



| e.g. the markilux 8800/870



reddot design award  
winner 2017

# Reduced to the essence: Free.Time.

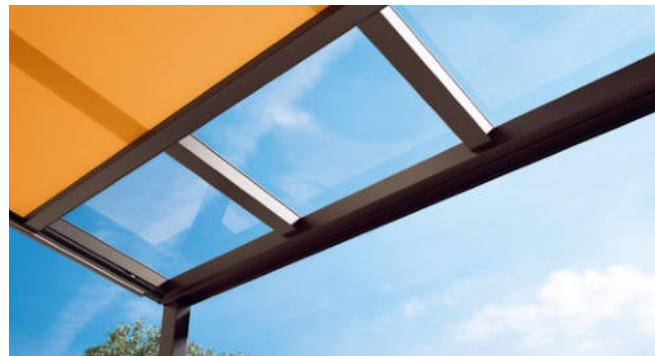
## Quality – Made in Germany.

For nearly 50 years, markilux has been developing and making top-quality solar protection solutions. markilux designer awnings are characterised by their first-rate, multi-award-winning design and innovative technology. The production of awning and cover under one roof – is the essence of what markilux “Made in Germany” represents, with the aim of making an al fresco lifestyle comfortable, convenient and enjoyable. With markilux, you can turn your favourite spot outdoors into something extra special. **The best under the sun. Create the most alluring shade in the world.**



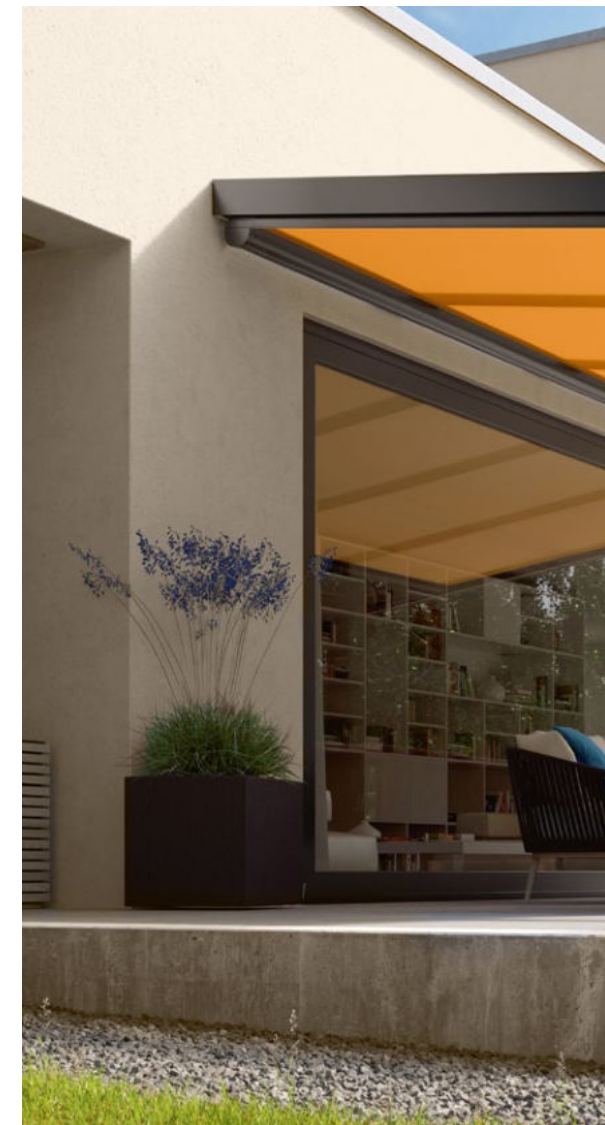
### markilux quality

The best possible materials and a comprehensive quality management system ensure that every designer awning has a long service life. As a company, markilux is certified according to DIN ISO 9001.



### markilux functionality

markilux combines innovative technologies and smart solutions to create high-end products. A multitude of accessories and operating options make it possible to individualise your markilux designer awning in line with your own personal wishes.



# markilux



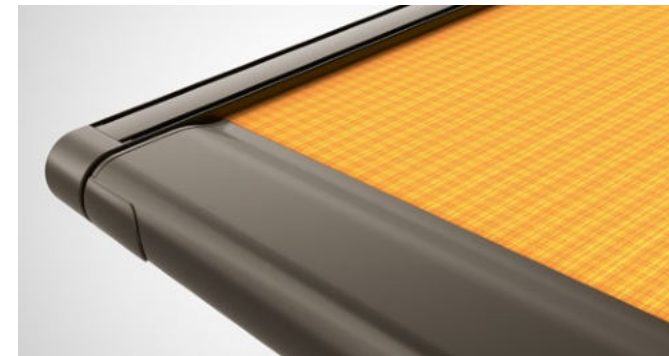
## markilux design

It is the perfect combination of form and function that turns an awning into a markilux designer awning. In this respect, markilux relies on its long-standing experience in R&D and design.

Member of



**Rat für Formgebung**  
German Design Council



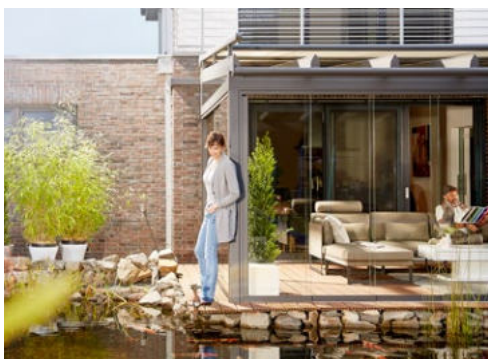
## markilux service

The combination of a brand product, expert advice and professional installation makes your solution perfect. Qualified markilux specialist dealers provide a comprehensive service and a personal point of contact in your area.



#### Textile ambience

markilux offers more than 250 timeless beautiful patterns in the highest quality – the decision is yours.



#### Excellent design

markilux has the awning that matches your home both from the outside and the inside.





## Create your own customised space to relax in.

### Your home. Your markilux.

Would you like to shade your conservatory in a stylish manner? Are you looking for an awning for your glass canopy which unites impressive functionality and attractive design? Then choose your favourite cover from more than 250 timelessly attractive patterns and create the markilux model that perfectly meets your requirements from numerous combination possibilities. And add further highlights from the broad range of markilux extras. With lighting modules and infrared heaters, as well as smart control technology, you can create comfortable, pleasant surroundings which you can enjoy all year round.



### Perfect solutions

Not possible? Of course it is. Together, you and your markilux specialist dealer will find the perfect solution for every situation.

Crystal clear:  
the perfect protection  
against sun and heat.



Above-glass Conservatory Awnings and Underglass Awnings for Glass Canopies



**mx\_8800**

Excellent solar protection for up to 36 m<sup>2</sup> with only one cover.  
Even larger glass surfaces can easily be shaded with a coupled awning.

## Above-glass conservatory awnings. Once on top. Always on top.

### Enjoy life in your conservatory even on the hottest of days

A markilux awning fitted above the glass reflects glaring sunlight, ultraviolet light as well as a considerable proportion of heat radiation and at the same time immerses your conservatory in diffuse natural daylight. Heat remains outside while you can properly enjoy being inside. Whether small or large glass areas, classic or hipped roofs – enjoy pleasant temperatures and create your very own dream conservatory.



### Excellent design

Elegant and functional. The fully closed cassettes of the markilux 8800 and 8850 protect the cover in wind and weather.

### mx\_8850

Perfect for hipped roof conservatories:  
the lateral guide tracks can be indented by up to 100 cm.





#### MX\_770

Exceptionally compact at only 125 × 125 mm, the square full cassette completely protects the awning cover.



#### MX\_870

With a diameter of just 130 mm, the round cassette harmoniously nestles against the conservatory and provides all-round protection to the retracted cover.



#### Square. Practical. Unobtrusive.

Both the square markilux 770 awning for installation on top of a glass surface and its round counterpart are very quiet. Noise-reducing closing guides ensure the awning retracts with the minimum of noise.

MX\_770 | 870

## Above-glass conservatory awnings. Small format. Big impact.



reddot design award  
winner 2017

### A round matter

Using the markilux 770 or 870 you can shade up to 450 × 400 cm in a stylish manner and enjoy the comfort and quality of markilux for many years to come.



**MX\_779**

Compact square full cassette for those who prefer clean lines in their designs.



**MX\_879**

Attractive round full cassette for those who love flowing curves.





MX\_779 | 879

## Underglass awnings for glass canopies. Cosy and intimate. Under glass. A brilliant solution.

### In people's minds and above their heads

Spend the day outside in your own garden below a protective canopy. markilux designer awnings promise the best protection from too much sun and help create your very own cosy outdoor area. The cover extends under the glass canopy and is protected against dirt, wind and weather. All markilux underglass awnings impress with their compact, enclosed cassettes that blend harmoniously into the structure. Numerous lighting options are available to allow you to perfect the ambience in the evening.



### A shadeplus complements your markilux underglass awning

The ideal addition to the markilux shading solution for glass canopies – completely in line with the clear design approach of markilux “Made in Germany”, it is integrated into the front profile of the underglass awning.



reddot design award  
winner 2017



#### LED Line attached to the guide tracks

Energy efficient, stylish and, like all markilux lighting modules, conveniently dimmable by means of remote control. If desired, also available in the light bar.



#### LED Spots

Put your favourite spot skilfully in the limelight and enjoy the evening in a pleasantly lit atmosphere. They can be dimmed and pivoted. With the markilux 779, they can also be mounted under the cassette.





markilux 779 with LED Line in the cassette  
Pleasant, ambient lighting in intricate markilux design.

Evening is the time for those little highlights  
Discover all the options in the showroom of your local  
markilux specialist dealer and at [markilux.com](https://www.markilux.com)



Exquisite fabrics  
in the most beautiful of shades.



## Awning Covers | Frame Colours



**markilux visutex collection 50/4/me**

Inspiration drawn from fashion, architecture, colour and naturally occurring special effects. 50 innovative fabrics conjure up your very own awning heaven in the tried and tested qualities sunsilk and sunvas – available exclusively from markilux.

## The most beautiful fabric between heaven and earth.

### markilux awning covers

The colour and quality of the awning fabric are what help make the ambience on your patio something special. Colour nuances, patterns and textures succeed in creating that uniquely special effect by virtue of their brightness and hue. As a leading manufacturer of high-grade awning fabrics with almost 100 years of experience in the manufacture of textiles, markilux offers an unparalleled variety. The markilux textile design team is constantly developing new patterns in line with the latest trends, which are nevertheless characterised by their timeless appeal. Among the more than 250 patterns in thematically coordinated colour families, you are certain to find your very own and most beautiful fabric between heaven and earth.



visutex

smartart

Art. Full.  
Visual highlights for your patio.  
Art, pure and simple.



| markilux visutex



| markilux perfortex



### Functionality can be so beautiful

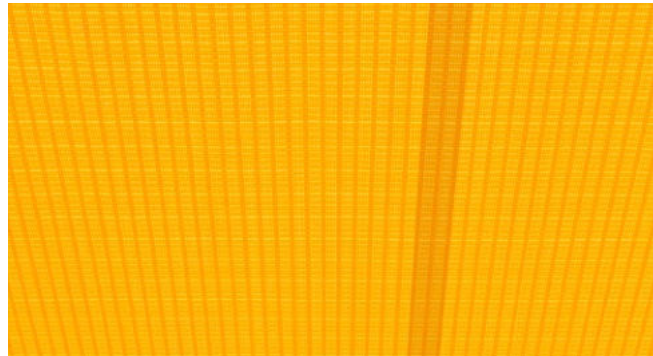
During the production of our awning fabrics, we leave nothing to chance. We add a final finishing flourish to the fabric with a special formula developed in house. This finish gives our awning covers incredible longevity and resistance to rain, light and fluctuations in temperature. Certified in accordance with Oeko-Tex standard 100, markilux awning covers are guaranteed free from harmful dyes and chemicals.

With an Ultraviolet Protection Factor (UPF) of 50+, all solid markilux awning covers made from sunsilk or sunvas offer the highest possible degree of UV protection offered by fabrics. Your skin's own protection factor is enhanced by a factor of more than 50. This allows you to enjoy sunny days for longer, without putting your health at risk.



#### Self-cleaning effect

Water droplets pick up dirt particles and run off the awning cover taking the dirt with them (the awning must be set at a pitch of at least 14 degrees), ensuring you can enjoy your beautiful fabric for a long time to come.



#### Bonded awning covers

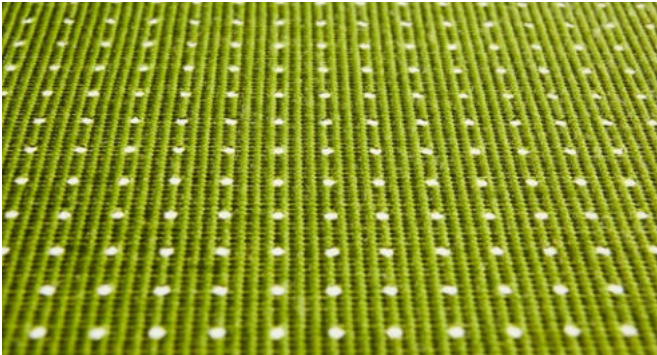
Panel joints bonded together ultrasonically ensure a consistent, unobtrusive appearance. The excellent resistance to water, light and fluctuations in temperature ensures that the service life of the cover is extended substantially.



#### Light and weather resistance and resistance to fading

High-tech yarns dyed right to the core and a high-grade finish developed in house guarantee the most stunning shade in which to relax.





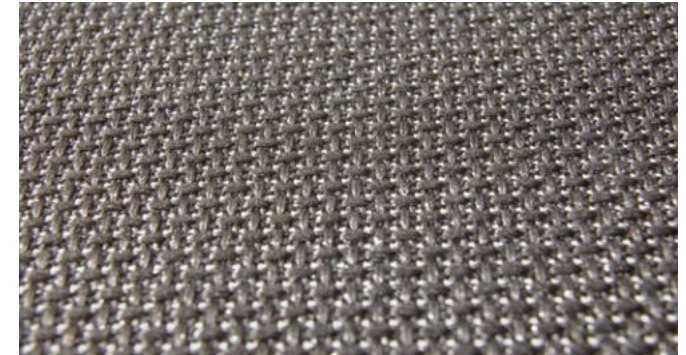
## transolair

This sunvas fabric with special perforation technique stands for impressive transparency as well as good light and air permeability. It guarantees an exchange of air between the cover and the glass, thus effectively reducing the build-up of heat.



## perfortex

Ideal for conservatories: Gaps in the weft, woven into the fabric, make this sunsilk fabric permeable to both air and water.



## vuscreen ALU

Solar protection with added functionality. The aluminium particles coating the high-tech fibres ensure a better climate in the room yet the material still allows a good view outside.



## sunsilk

Brilliant vividness. Silky smooth surface. Unique luminosity.



## sunvas

Soft glow. Textile-like to the touch. Textile character and natural appearance.



## perla FR

This highly flame-retardant and waterproof (for purpose) sunvas material meets extremely exacting fire safety regulations.



## markilux 3D App and Fabric Finder

markilux develops, manufactures and tests its awning cover fabrics in its own facility in Germany. Your own personal favourite can be discovered amongst the more than 250 fabric patterns in the showroom of your markilux specialist dealer, in the markilux 3D App and in the Fabric Finder at [markilux.com](https://www.markilux.com)

# markilux



Traffic white

RAL 9016



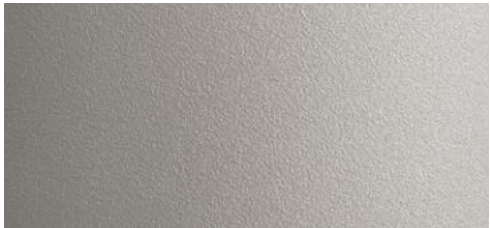
Off-white textured finish

5233



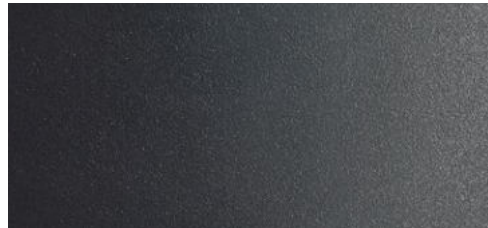
Metallic aluminium

RAL 9006



Stone grey metallic

5215



Anthracite metallic

5204



Grey brown

similar to RAL 8019



Havana brown textured finish

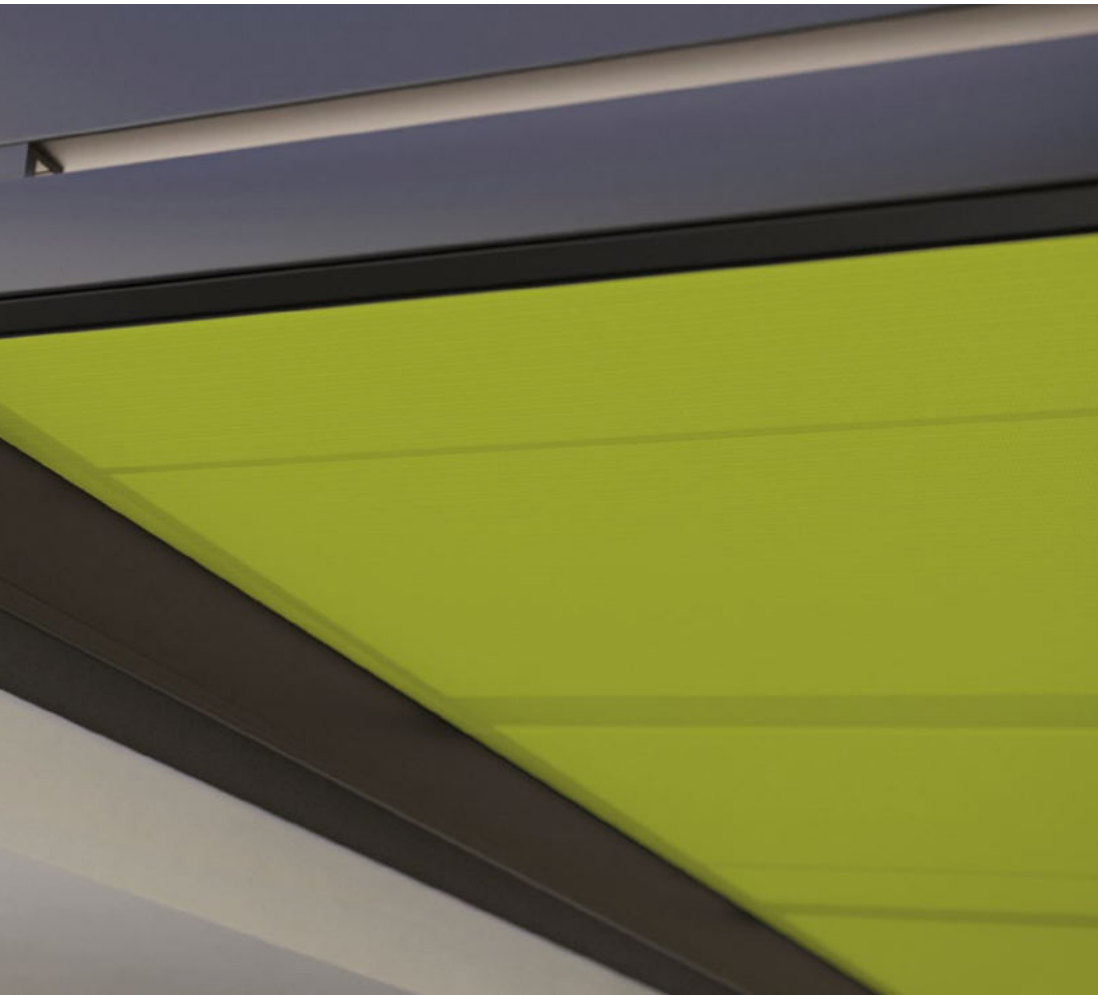
5229



RAL colour of your choice

© RAL Bonn 2021





## Sounds perfect. Tone in tone.

### **marklux frame colours**

The awning frame colour complements and enhances the colour of the fabric and creates a perfect link to the architectural surroundings. From a variety of shades of white through to the timelessly elegant anthracite, a broad range of colours is available to you. And if you want to create your own particular colour scheme? No problem! We will gladly manufacture your dream awning in your own personal shade.

Our high-grade powder coating finish is guaranteed for any awning colour you choose.

### **Matching every architectural style and customer demand**

All marklux frame colours are available without surcharge.  
Non-standard colours can be selected on request.

Beauty lies not in size,  
but in attention to detail.

markilux



Operation | Options | Accessories

# Make it easy on yourself. And comfortable.

## **markilux operation**

Fulfills the highest expectations and can be used in any weather conditions. The choice is yours: manual operation (optionally spring assisted ), switch-operated or remote-controlled motor are all possible on most models. And if you wish, light, wind and rain sensors will control your markilux designer awning according to the prevailing weather conditions. Alternatively, you simply operate it at home yourself and this can even be done when you're out and about via your smartphone or tablet.

Your markilux specialist dealer is at your disposal should you have any queries and will provide you with details on how you can connect several individual units together and operate them with the touch of a button.



# markilux



### You too will be impressed

markilux offers a broad range of stylish and intelligent solutions that show your house in the best of lights. Get detailed information and competent advice from your markilux specialist dealer or go to [markilux.com](https://www.markilux.com)



### Home automation

Easily control your designer awning by smartphone or tablet – even when on the move. The smart control function with io technology via the app makes it possible.



### Automatic weather controls

With light, wind and rain sensors, your markilux system will react to any change in the weather. In sunny conditions the awnings will extend automatically, and in wind and rain they will retract.



### markilux remote control

Perfect protection from the sun, inquisitive glances and glare comfortably at the touch of a button.

# More markilux. Fewer compromises.

markilux Options and Accessories



## markilux shadeplus

The ideal addition to the shading solution for your glass canopy, integrated into the front profile of the markilux 779 / 879.



## Side screen markilux 790

Protects against low-lying sun and wind from the side, as well as stopping prying eyes. Maximum height 250 cm. Maximum extension 450 cm.



## Vertical designer roller blinds

Simply shield yourself from inquisitive glances and low-lying sun. Sit protected from the wind and rain. Enjoy the warmth of the day for longer. Adding vertical designer roller blinds from markilux makes your outdoor room perfect – and more private.





**silentec motor**

Deafeningly quiet. In the markilux 8800, this special motor ensures particularly quiet operation.



**markilux infrared heater**

Feel the warmth in an instant and enjoy the evening outside for even longer. Either as stand-alone unit (1400 Watt) or installed under your awning (2500 Watt, the latter optionally dimmable in three stages).



**markilux LED Spotline**

Turn night into day. The elegant light bar in a powder-coated aluminium housing, that can be fitted almost anywhere. The LED Spots can be swivelled and dimmed. Available in two sizes: 180 cm with 3 spotlights and 300 cm with 5 spotlights.



**Coupled awnings**

An extensive range of brackets allows several units to be installed next to one another – creating XXL shading solutions.



**Flush front profile**

Completely extended it finishes flush with the guide tracks.



**Decorative covers for guide track brackets**

Improve the appearance.

Availability depends on the model

# More freedom. More free space.

markilux Options and Accessories

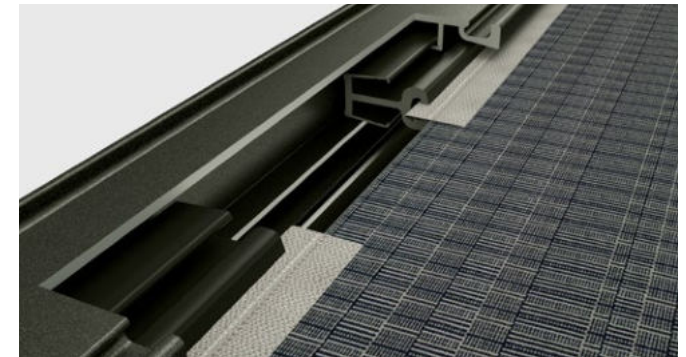


## Perfect cover fit

High cover tension is achieved by virtue of two concealed special gas-pistons operating independently of one another in the front profile.



markilux



**markilux tracfix**

One of the many sophisticated features offered by markilux: the lateral cover guidance system without a gap between the awning / blind cover and the guide track. Gives an overall better appearance and improves wind stability.

**markilux panorama window**

Wouldn't you like to be able to sit outside below your patio roof, protected from wind and weather, and still be able to enjoy an unobstructed view? For the markilux 776/876 with tracfix, we offer you the markilux panoramic window.

Maximum dimensions 600 × 300 cm.

Maximum height of the panoramic window approx. 135 cm.

Availability depends on the model

The background is a vibrant red with several dark red diagonal lines crossing each other, creating a sense of depth and movement. The text is positioned in the upper left quadrant of this red area.

A clear overview.  
Opening up exciting prospects.



Technical Specification

# Above-glass Conservatory Awnings

markilux 8800  
Page 12



markilux 8850  
Page 13



markilux 770  
Page 14



markilux 870  
Page 14



Max. width × projection	700 × 450 cm / 500 × 700 cm 600 × 450 cm / 500 × 600 cm (tracfix)	650 × 400 cm 500 × 500 cm	450 × 400 cm	450 × 400 cm
Cassette dimensions	Ø 187 mm	Ø 187 mm	125 × 125 mm	Ø 130 mm
Operation optional	Switch-operated motor + remote-controlled motor* + silentec motor	Switch-operated motor + remote controlled motor*	Switch-operated motor + remote controlled motor*	Switch-operated motor + remote controlled motor*
Cover guidance optional	Guide tracks + tracfix	Guide tracks	Guide tracks (tracfix)	Guide tracks (tracfix)
Cover tension	Gas pistons	Gas pistons	Gas pistons	Gas pistons
Wind resistance class equivalent of Beaufort force → wind speed	3 6 → 38 – 48 km/h 6 → 24 – 30 mph	2 5 → 28 – 37 km/h 5 → 17 – 23 mph	3 6 → 38 – 48 km/h 6 → 24 – 30 mph	3 6 → 38 – 48 km/h 6 → 24 – 30 mph
Options**	+ coupled awning			

\* Remote control, smart (app) or automatic controls possible

\*\* Some options cannot be combined

# Underglass Awnings for Glass Canopies

markilux 779

Page 16



600 × 450 cm / 400 × 600 cm  
600 × 400 cm (tracfix)

125 × 125 mm

#### Manual operation

- + switch-operated motor
- + remote controlled motor\*

#### Guide tracks

- + tracfix

#### Gas pistons

2 – 3 depending on size / 3 with tracfix

5 – 6 → 28 – 48 km/h

5 – 6 → 17 – 30 mph

- + LED Spots attached to the cassette and/or to the light bar
- + LED Line in the cassette, fitted to the guide tracks and/or in the light bar
- + shadeplus

markilux 879

Page 16



600 × 450 cm / 400 × 600 cm  
600 × 400 cm (tracfix)

Ø 130 mm

#### Manual operation

- + switch-operated motor
- + remote controlled motor\*

#### Guide tracks

- + tracfix

#### Gas pistons

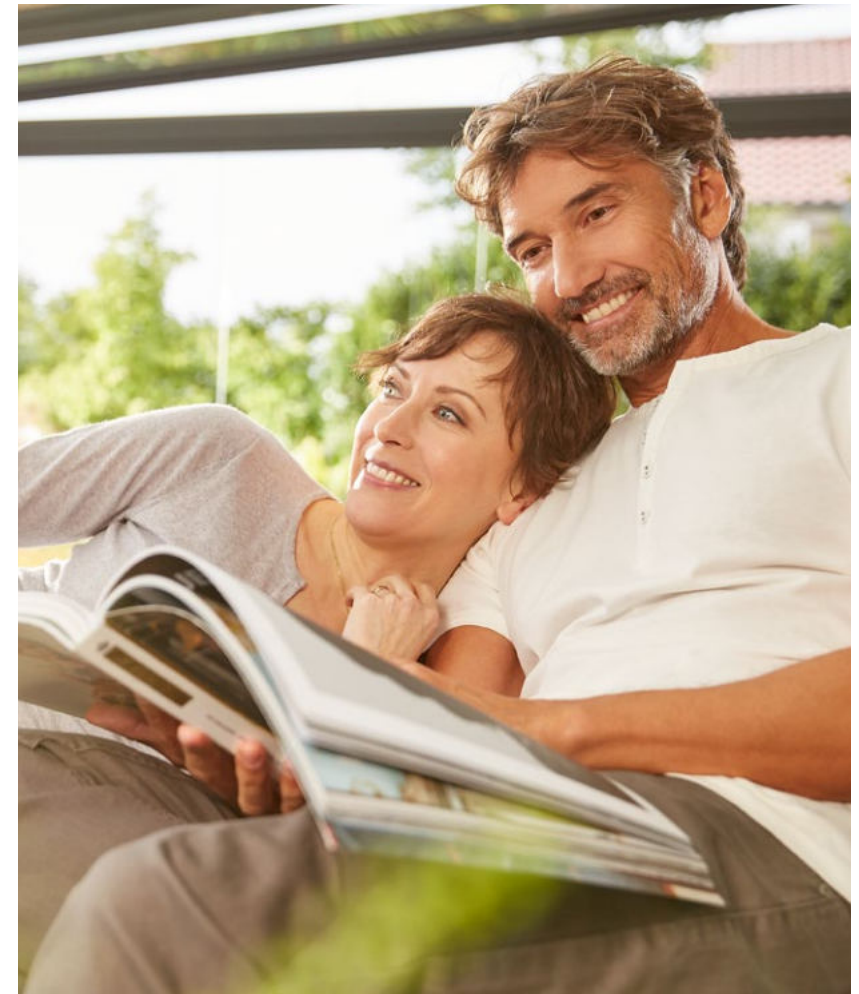
2 – 3 depending on size / 3 with tracfix

5 – 6 → 28 – 48 km/h

5 – 6 → 17 – 30 mph

- + LED Spots attached to the light bar
- + LED Line fitted to the guide tracks and/or in the light bar
- + shadeplus

markilux



Allow yourself to be inspired, impressed, advised ...

Detailed information is available from your local markilux specialist dealer and at [markilux.com](http://markilux.com)

**The best under the sun. Create the most alluring shade in the world.**

Innovative technology and the best quality imaginable, with a multitude of accolades and awards to its name.

Ideas, detailed information, competent advice and the most delightful of awning fabrics can be found in the showroom of your markilux specialist dealer and at [markilux.com](https://www.markilux.com)