



Make your house **stand out.**

Designer Blinds and Awnings for Windows

markilux
The best under the sun



The best under the sun.
Create the most alluring shade
in the world.

markilux







There is always a clear line
to our designs which
usually ends in a reddot.

Make your house stand out

Natural light and the sun's rays enrich your life in a way that little else can. No artificial light source comes close. But, depending on the sun's elevation and the season, sometimes we can have too much of a good thing. markilux offers various means to use natural light from outside to influence the atmosphere in a room. Allow yourself to be inspired by our ideas and discover the ways you can create an ambience of wonderfully natural light and maximum living comfort in your own home, protected from the prying eyes of those outside. Experience innovative technology "Made in Germany" and all the multi-award-winning markilux designs.

markilux designer awnings have received a multitude of awards:



| Brand



| Website



| e.g. the markilux 776/876

Reduced to the essence: Free.Time.

Quality – Made in Germany.

For nearly 50 years, markilux has been developing and making top-quality solar protection solutions. markilux designer awnings are characterised by their first-rate, multi-award-winning design and innovative technology. The production of awning and cover under one roof – is the essence of what markilux “Made in Germany” represents, with the aim of making an al fresco lifestyle comfortable, convenient and enjoyable. With markilux, you can turn your favourite spot outdoors into something extra special. **The best under the sun. Create the most alluring shade in the world.**



markilux quality

The best possible materials and a comprehensive quality management system ensure that every designer awning has a long service life. As a company, markilux is certified according to EN ISO 9001.



markilux functionality

markilux combines innovative technologies and smart solutions to create high-end products. A multitude of accessories and operating options make it possible to individualise your markilux designer awning in line with your own personal wishes.



markilux



markilux design

It is the perfect combination of form and function that turns an awning into a markilux designer awning. In this respect, markilux relies on its long-standing experience in R&D and design.

Member of



Rat für Formgebung
German Design Council



markilux service

The combination of a brand product, expert advice and professional installation makes your solution perfect. Qualified markilux specialist dealers provide a comprehensive service and a personal point of contact in your area.



Diversity in textiles

Whether opaque or transparent, discreetly patterned or garishly bright: in our markilux collection you will find just the right awning fabric to create your own personal sunshine.

Your own personal sunshine. Three good reasons. Countless possibilities.

Textile shading provides improved living comfort

markilux designer blinds and awnings for windows offer numerous advantages in comparison with standard shading systems. They offer effective protection against the often blinding rays of the sun and prevent the room from heating up, thus maintaining a pleasant living environment. markilux designer awnings immerse your room in softly diffused daylight without blocking out the sun entirely. Transparent awning fabrics allow a clear view outside whilst shielding you from prying eyes. Ease of operation or integration into a home automation system is a given at markilux.



Effective solar protection

markilux window blinds provide optimum UV protection and convert the sun's sometimes blinding rays into soft ambient lighting.



Optimum protection from prying eyes

markilux awning covers give you an unobstructed view outside yet maintain the privacy of your own four walls.



Models and options

As individual as your desires: choose the markilux with the style and accessories that matches your home.



marklux

However you look at it:
Trendsetting.



Awning Models



markilux 620 sundrive

The integrated solar module with powerful rechargeable battery which drives the remote-controlled motor is available as an optional extra.



Perfect cover tension

Depending on the model, markilux vertical cassette roller blinds are equipped with special gas pistons. This gives the cover perfect tension even in larger units and under greater wind loads.



MX_620 | 625 | 710 | 720 | 750 | 776
MX_810 | 820 | 850 | 876

markilux vertical cassette roller blinds. My house. My style. My markilux.

As individual as your home

Those who value stylish furnishings, will definitely not enter into any compromise as far as their view outside is concerned. A markilux vertical cassette roller blind is the perfect symbiosis of functionality and design. When extended, the perfectly tensioned cover offers ideal protection from the sun, glare and inquisitive glances. When retracted, it is protected both from the weather and dirt in the fully enclosed cassette.



markilux tracfix

This lateral cover guidance system without a gap between the awning / blind cover and the guide track: guarantees a more attractive overall appearance and better wind stability.



| markilux 776/876

Models



MX_710
95 × 95 mm, cover guidance
by way of stainless steel cables



MX_720
95 × 95 mm, cover guidance
by way of angled guide rails



MX_750
95 × 95 mm, cover guidance
by way of stainless steel rods



MX_776
125 × 125 mm, cover guidance
by way of guide tracks



MX_810
Ø 115 mm, cover guidance
by way of stainless steel cables



MX_820
Ø 115 mm, cover guidance
by way of angled guide rails



MX_850
Ø 115 mm, cover guidance
by way of stainless steel rods



MX_876
Ø 130 mm, cover guidance
by way of guide tracks

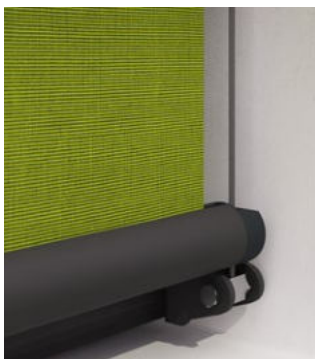


MX_620
95 × 110 mm, cover guidance by way of guide tracks,
optionally with markilux sundrive, the integrated solar
module for operating the remote-controlled motor.



MX_625
125 × 135 mm, cover guidance
by way of guide tracks

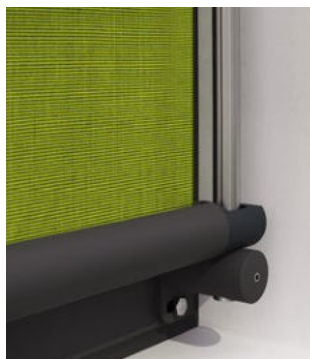
Cover guidance



Stainless steel cables
coated with plastic, barely visible, for a discreet appearance.



Guide tracks
Sturdy and robust, on request with the markilux tracfix system (depending on the model).



Stainless steel rods
Elegant, a visual highlight giving a stylish appearance.

Fixture type



Face fixture
The frame shape that matches your windows.



Stand-off fixture
Brackets and decorative covers give a perfect overall appearance (depending on the model).



Reveal fixture
Discreet and unobtrusive.

markilux vertical cassette blinds

| Model | 710 / 810 | 720 / 820 | 750 / 850 | 776 / 876 | 620 / 625 |
|------------------------------|------------------------|--------------------|----------------------|--|--|
| Maximum dimensions optional | 500 × 350 cm | 300 × 350 cm | 500 × 350 cm | 600 × 350 cm 400 × 600 cm | 600 × 350 / 550 × 400 cm (625) 400 × 300 / 300 × 400 cm (620) |
| Cover guidance optional | Stainless steel cables | Angled guide rails | Stainless steel rods | Guide tracks tracfix | Guide tracks (tracfix) |
| Cover tension | Gravity fed | Gravity fed | Gravity fed | Gas pistons | Gravity fed |
| Fixture type | Face / top / reveal | Face / reveal | Face / top / reveal | Face / reveal / stand-off | Face / reveal |
| Options | | | | + Panoramic window only possible with tracfix | + sundrive up to max. 250 × 300 cm |
| Wind resistance class | 2 | 2 | 2 | 2 – 3* | 2 – 3* |
| equivalent of Beaufort force | 5 → 28 – 37 km/h | 5 → 28 – 37 km/h | 5 → 28 – 37 km/h | 5 – 6 → 28 – 48 km/h | 5 – 6 → 28 – 48 km/h |
| wind speed | 5 → 17 – 23 mph | 5 → 17 – 23 mph | 5 → 17 – 23 mph | 5 – 6 → 17 – 30 mph (depends on the dimensions) | 5 – 6 → 17 – 30 mph (depends on the dimensions) |

markilux
drop-arm cassette awning
max. 700 × 250 cm

Cover guidance
drop arm (80/100/120/150 cm)

Cover tension
stainless steel gas piston

Fixture type
face/top/reveal
optionally with telescopic
accro bars

Wind resistance class 2
Beaufort force 5 → wind speed
28 – 37 km/h; 17 – 23 mph



Classic awning. Compact cassette.

A classic when extended, an eye-catcher and gem on a building. When retracted, the compact cassette protects the cover and the awning merges discreetly with the architecture.

MX_730 | 830



markilux drop-arm cassette awning. Exceptional. Eye-catching.

Great solar protection and great visibility

A cassette awning with classic appearance that protects against the sun and still permits a clear view outside. The drop arms with gas pistons tension the cover in an angle of up to 140 degrees to the window. The front profile with spring-loaded closing mechanism ensures the profile finishes tight against the underside of the cassette. Telescopic accro bars are optionally available for installation on a balcony.



MX_730
Square cassette, 95 × 95 mm



MX_830
Round cassette, Ø 115 mm

mx_740 | 840

The markilux Marquisolette. The most successful combination of light and shade.

The ideal combination of vertical blind and drop-arm cassette awning

In the upper section, the solar and visual protection runs vertically, in the lower section the amount of incoming light can be determined in a flexible manner depending on the position of the drop arms. The height of the area to be shaded vertically can be set to fulfil your individual requirements in terms of maximum shade and a perfect view outside.



mx_740

Square cassette, 95 × 95 mm, as standard with a cover profile:
looks tidy and protects the cover when retracted.



mx_840

Round cassette, Ø 115 mm,
protects the cover when the awning is retracted.





markilux Marquisolette
max. 300 × 300 cm

Cover guidance
angled guide rail with drop arm
(60 cm) attached

Cover tension
stainless steel gas piston

Fixture type
face/reveal

Wind resistance class 2
Beaufort force 5 → wind speed
28 – 37 km/h; 17 – 23 mph

Smart looks and effective technology in elegant combination

Angled guide rail with high-grade slide mechanism.

Drop arms with gas piston technology and markilux windlock mechanism.

The markilux triangular blind
max. 400 × 500 cm

Cover guidance
guide tracks
plus tensioning cords

Cover tension
gas pistons in the track

Fixture type
stand-off

Wind resistance class 2
Beaufort force 5 → wind speed
28 – 37 km/h; 17 – 23 mph



You know what you want

We bring your vision to life. Talk to your markilux specialist dealer
and allow yourself to be inspired at [markilux.com](https://www.markilux.com)

MX_893

The markilux triangular blind. The pinnacle of efficiency.

The solar protection and privacy solution for unconventional windows

Triangular windows or skylights are fitted with made-to-measure solar protection from markilux. The sturdy full cassette protects the cover from soiling. The tensioning system which uses highly tear-resistant tensioning cords and integrated gas pistons ensures optimum cover stability at every stage of extension.



MX_893
Round cover cassette, Ø 115 mm,
with brush seal at cover exit point.

The clever system offering bespoke solutions

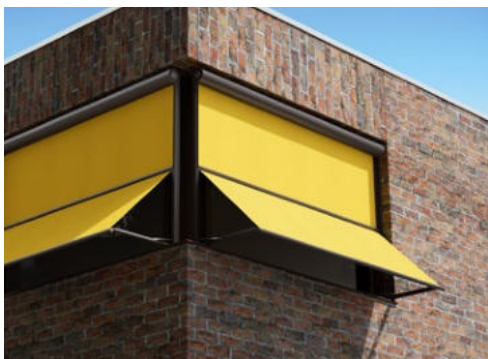
Patented clip-on fixture of the guide tracks to the brackets and the wide range of fixture options permit interior, exterior, vertical, horizontal or diagonal installation.



Exquisite fabrics
in the most beautiful of shades.



Awning Covers | Frame Colours



sunsilk

Brilliant vividness. Silky smooth surface.
Unique luminosity.



sunvas

Soft glow. Textile-like to the touch.
Textile character and natural appearance.



specials

Semi-transparent, heat-reflecting, air permeable,
highly water resistant and flame-retardant materials.



transolair

This sunvas fabric with special perforation technique
stands for impressive transparency as well as good
light and air permeability. It guarantees an exchange
of air between the cover and the glass, thus effectively
reducing the build-up of heat.



markilux visutex collection 50/4/me

Inspiration drawn from fashion, architecture, colour and naturally occurring special effects.
50 innovative fabrics conjure up your very own awning heaven in the tried and tested qualities
sunsilk and sunvas – available exclusively from markilux.



The most beautiful fabric between heaven and earth.

markilux awning covers

The colour and quality of the awning fabric are what help make the ambience on your patio something special. Colour nuances, patterns and textures succeed in creating that uniquely special effect by virtue of their brightness and hue. As a leading manufacturer of high-grade awning fabrics with almost 100 years of experience in the manufacture of textiles, markilux offers an unparalleled variety. The markilux textile design team is constantly developing new patterns in line with the latest trends, which are nevertheless characterised by their timeless appeal. Among the more than 250 patterns in thematically coordinated colour families, you are certain to find your very own and most beautiful fabric between heaven and earth.



GERMAN
DESIGN
AWARD
SPECIAL
2019

| markilux visutex



ICO 2
NICO
AWA 1
RDS 8

INNOVATIVE
MATERIAL
best of best

| markilux perfortex

visutex

smartart

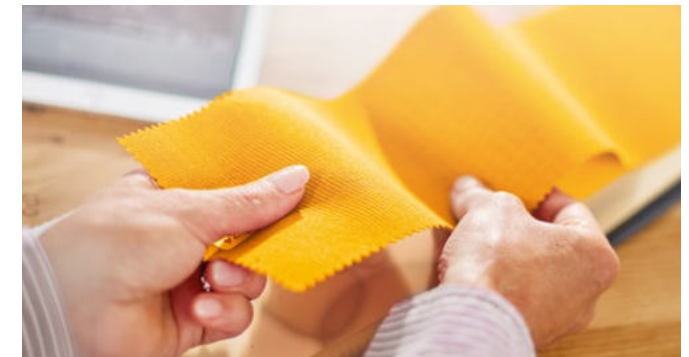
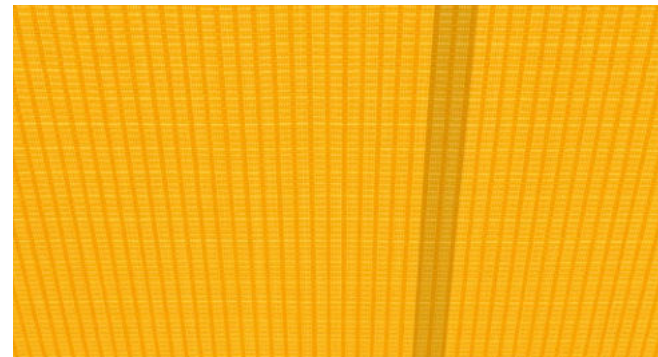
Art. Full.
Visual highlights for your patio.
Art, pure and simple.



Functionality can be so beautiful

During the production of our awning fabrics, we leave nothing to chance. We add a final finishing flourish to the fabric with a special formula developed in house. This finish gives our awning covers incredible longevity and resistance to rain, light and fluctuations in temperature. Certified in accordance with Oeko-Tex standard 100, markilux awning covers are guaranteed free from harmful dyes and chemicals.

With an Ultraviolet Protection Factor (UPF) of 50+, all solid markilux awning covers made from sunsilk or sunvas offer the highest possible degree of UV protection offered by fabrics. Your skin's own protection factor is enhanced by a factor of more than 50. This allows you to enjoy sunny days for longer, without putting your health at risk.



Self-cleaning effect

Water droplets pick up dirt particles and run off the awning cover taking the dirt with them (the awning must be set at a pitch of at least 14 degrees), ensuring you can enjoy your beautiful fabric for a long time to come.

Bonded awning covers

Panel joints bonded together ultrasonically ensure a consistent, unobtrusive appearance. The excellent resistance to water, light and fluctuations in temperature ensures that the service life of the cover is extended substantially.

Light and weather resistance and resistance to fading

High-tech yarns dyed right to the core and a high-grade finish developed in house guarantee the most stunning shade in which to relax.



markilux 3D App and Fabric Finder

markilux develops, manufactures and tests its awning cover fabrics in its own facility in Germany. Your own personal favourite can be discovered amongst the more than 250 fabric patterns in the showroom of your markilux specialist dealer, in the markilux 3D App and in the Fabric Finder at [markilux.com](https://www.markilux.com)



Traffic white

RAL 9016



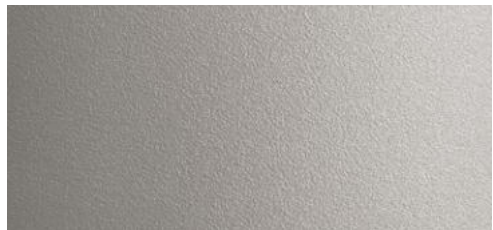
Off-white textured finish

5233



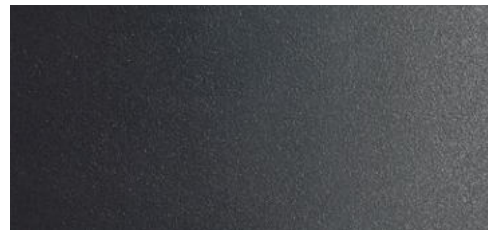
Metallic aluminium

RAL 9006



Stone grey metallic

5215



Anthracite metallic

5204



Grey brown

similar to RAL 8019



Havana brown textured finish

5229



RAL colour of your choice

© RAL Ebnm 2021





Sounds perfect. Tone in tone.

markilux frame colours

The awning frame colour complements and enhances the colour of the fabric and creates a perfect link to the architectural surroundings. From a variety of shades of white through to the timelessly elegant anthracite, a broad range of colours is available to you. And if you want to create your own particular colour scheme? No problem! We will gladly manufacture your dream awning in your own personal shade.

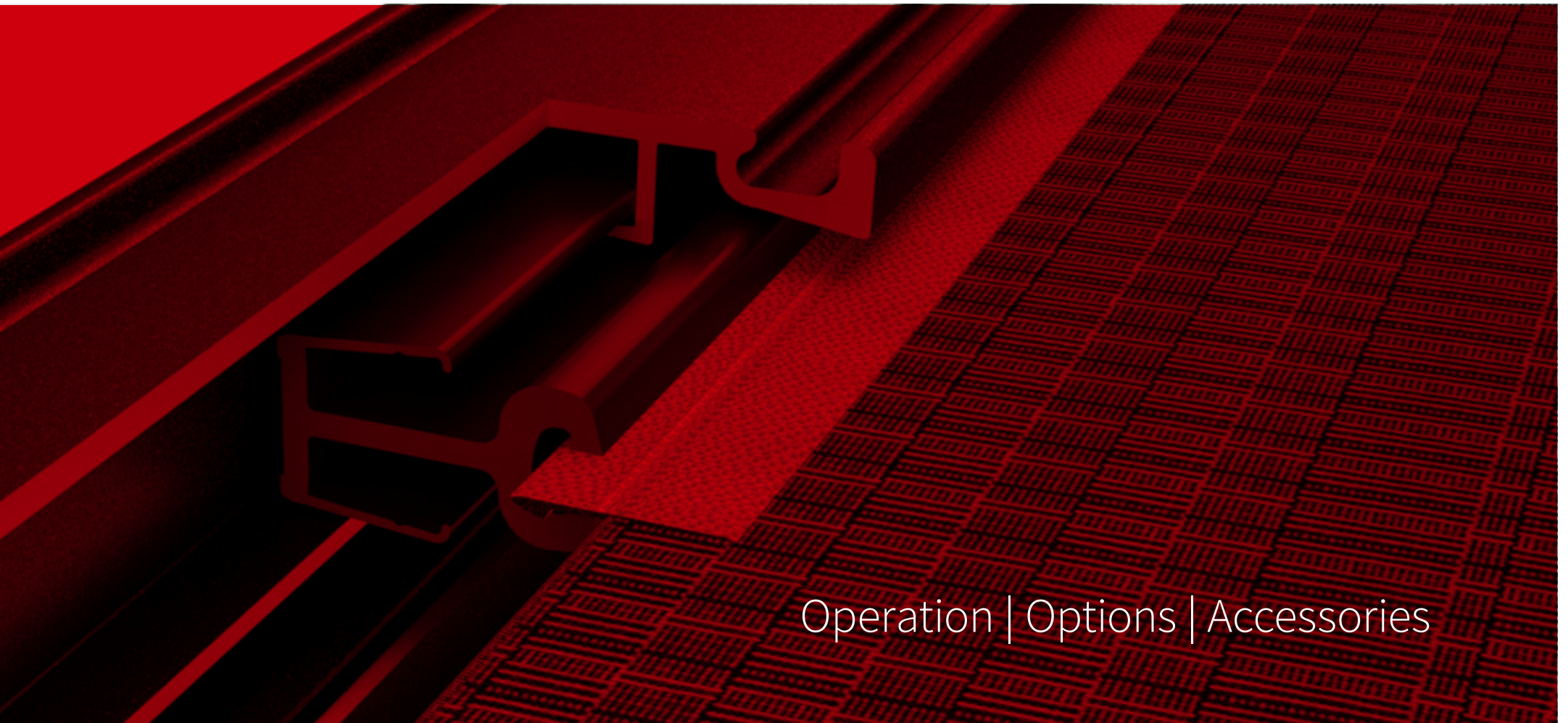
Our high-grade powder coating finish is guaranteed for any awning colour you choose.

Matching every architectural style and customer demand

All markilux frame colours are available without surcharge.
Non-standard colours can be selected on request.

Beauty lies not in size,
but in attention to detail.

markilux



Operation | Options | Accessories

Make it easy on yourself. **And comfortable.**

markilux operation

Fulfills the highest expectations and can be used in any weather conditions. The choice is yours: manual operation (optionally spring assisted), switch-operated or remote-controlled motor are all possible on most models. And if you wish, light, wind and rain sensors will control your markilux designer awning according to the prevailing weather conditions. Alternatively, you simply operate it at home yourself and this can even be done when you're out and about via your smartphone or tablet. Your markilux specialist dealer is at your disposal should you have any queries and will provide you with details on how you can connect several individual units together and operate them with the touch of a button.



Home automation

Easily control your designer blind by smartphone or tablet – even when on the move. The smart control function with io technology via the app makes it possible.



Automatic weather controls

With light, wind and rain sensors, your markilux system will react to any change in the weather. In sunny conditions your blinds will extend automatically, and in wind and rain they will retract.



markilux remote control

Perfect protection from the sun, inquisitive glances and glare comfortably at the touch of a button.



markilux

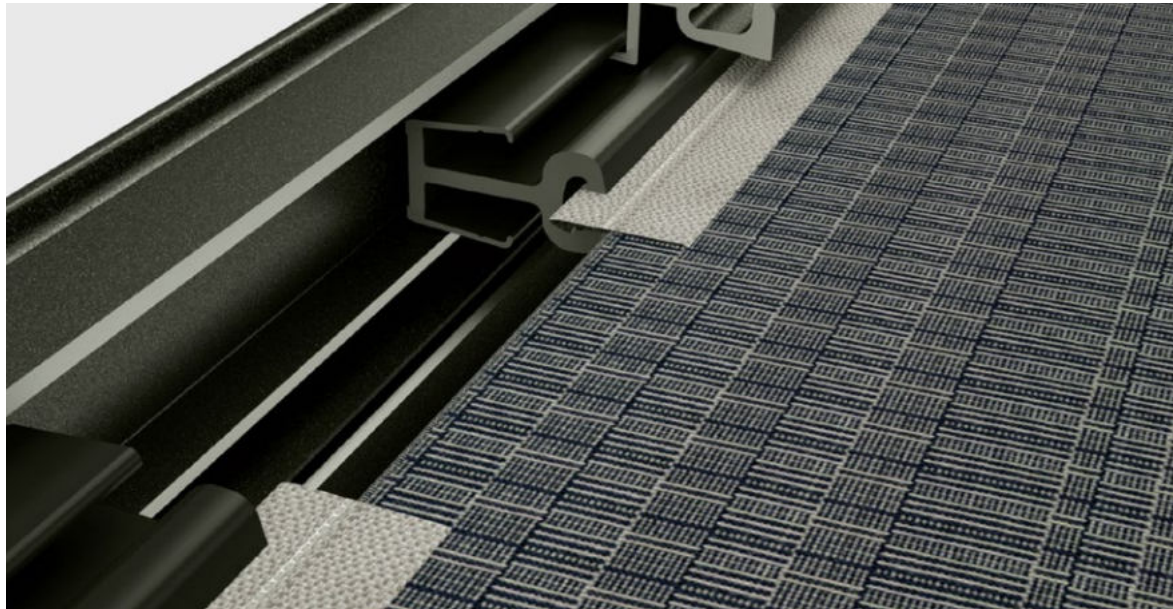


You too will be impressed

markilux offers a broad range of stylish and intelligent solutions, that show your house in the best of lights. Get detailed information and competent advice from your markilux specialist dealer or go to [markilux.com](https://www.markilux.com)

More freedom. More free space.

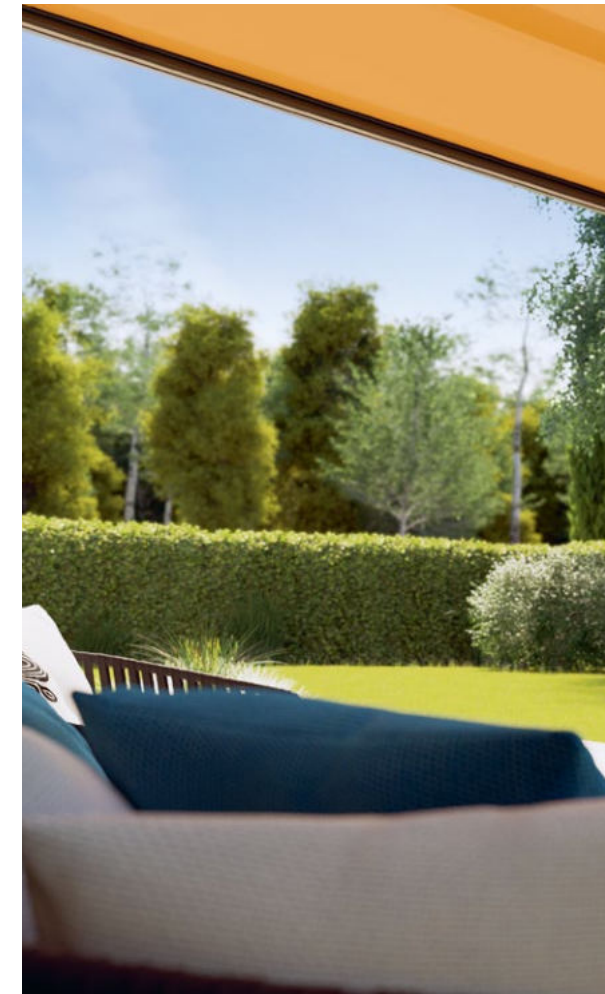
markilux Options and Accessories



markilux tracfix

One of the many markilux refinements: the lateral cover guidance system without gap between awning / blind cover and guide track. Gives an overall better appearance and improves wind stability.

Availability depends on the model



markilux



Decorative covers for the track brackets

Bolt and nut heads disappear. A perfect overall appearance.

markilux panorama window

Wouldn't you like to be able to sit outside below your patio roof, protected from wind and weather, and still be able to enjoy an unobstructed view? For the markilux 776/876 with tracfix, we offer you the markilux panoramic window.

Maximum dimensions 600 × 300 cm.

Maximum height of the panoramic window approx. 135 cm.

The best under the sun. Create the most alluring shade in the world.

Innovative technology and the best quality imaginable, with a multitude of accolades and awards to its name.

Ideas, detailed information, competent advice and the most delightful of awning fabrics can be found in the showroom of your markilux specialist dealer and at [markilux.com](https://www.markilux.com)