

cell® | cubicle system



cell® | at a glance

KEMMLIT – for discerning customers	page 3
cell – designed	Seite 4
cell – bionic story	Seite 5
alucell cubicle system	Seite 6
softcell cubicle system	Seite 8
hardcell cubicle system	Seite 12
classiccell cubicle system	Seite 16
vario cell cubicle system	Seite 22
cell – handles and knobs	Seite 26
cell – hinges and legs	Seite 27
cell – grab bar with LED indicator	Seite 28
cell – washroom accessories	Seite 29
cell – digital print	Seite 30
cell – material	Seite 32
cell – colours and structures	Seite 33
KEMMLIT – consulting and planning	Seite 34
KEMMLIT – Our promise	Seite 35



www.kemmlit.de



KEMMLIT® | for discerning customers

KEMMLIT's philosophy is based on the unwavering belief in achieving the highest standards in production, logistics and service. This is what has made us the market leader.

For several decades, we have been providing our customers with consistently outstanding customised solutions. The key to our success is the way we combine state of the art production methods with uncompromising quality and innovative design.

Stringent quality control and a keen sense for balanced and aesthetic proportions ensure washroom facilities of the very highest standard.

Regardless of which KEMMLIT products you choose, you are assured of the highest production and design standards. The TÜV also confirmed and certified the quality of the construction with the GS sign (tested safety).



2012



reddot design award winner 2011



DESIGNPREIS 2008
NOMINIERT





cell® | designed



For the architects Regine Leibinger and Frank Barkow the attraction of working with KEMMLIT to develop the cell cubicle system is twofold:

On the one hand, it is an experiment with materials and surfaces, a theme which has been of particular interest to this architectural practice for many years.

And on the other hand this assignment touches on a core skill of architects; namely, creating spatial quality – in this case in the very place where it has been most neglected in the past.

In the design process, experiences from the world of architecture were applied to that of product design. Both principles of creative design and various techniques of metal surface processing found their application in this case.

The cell cubicle products grew out of the desire to break away from the principle of smooth, flat interior surfaces, and instead create space and atmosphere using basic materials.

The German-American office Barkow Leibinger Architects was founded in 1993 in Berlin. The range of projects it handles varies from industrial construction to public buildings, although archetypal details have frequently been applied in all areas of their work.

cell cubicle system
designed by barkow leibinger





cell® | bionic story

In the beginning was nature!

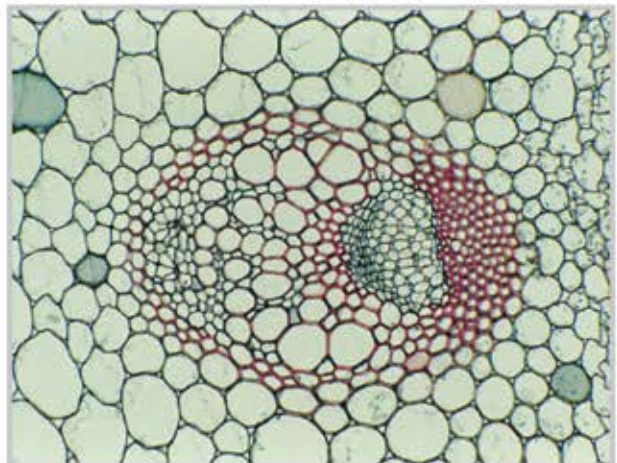
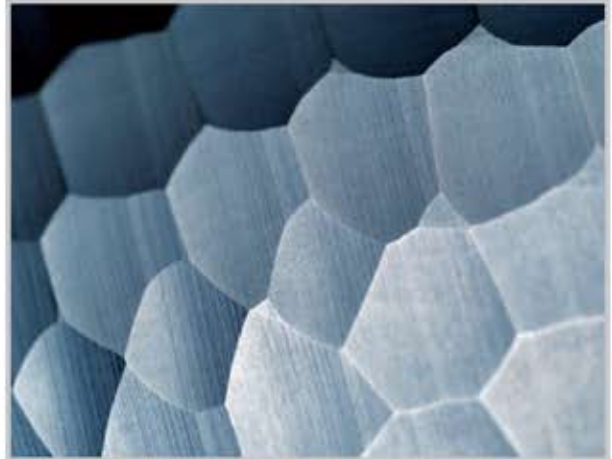
For the design of the cell cubicle system the architects Regine Leibinger and Frank Barkow adopted bionic principles.

The model that inspired them to create this new cubicle system for KEMMLIT were soft and honeycomb-like cell structures.

The optical appeal of cell lies in the play of round forms and corners in combination with a clear concentration on essentials. In addition to its clear design it also exhibits an impressive utility value.

A classic example of the versatility of cell, with its softcell, hardcell, classiccell and variocell models, constitutes a quality system solution for modern cubicle design that is welcome wherever architecture, design and individuality are appreciated. Whether low-key or exciting, minimalist or extravagant.

“Bionics – applying the lessons of nature to technology and design.”





alucell® designed by Barkow and Leibinger.
Exclusively on request. Talk to us!



alucell®





softcell®



softcell® | natural curves

Pure aesthetics! Thanks to its design inspired by natural models softcell produces a soft spatial quality in public washroom facilities. As a result, these spaces where one's gaze normally tends to get lost between uniformly smooth walls become designed locations.

The technical elements of the system such as the supporting legs or head rails, are deliberately obscured and thereby conform to the idea of a new visual landscape.

softcell's appearance can be further individualised through a selection of metal surfaces. The alternatives available to clients and architects range from aluminium to coated steel, or various structured stainless steel surfaces.



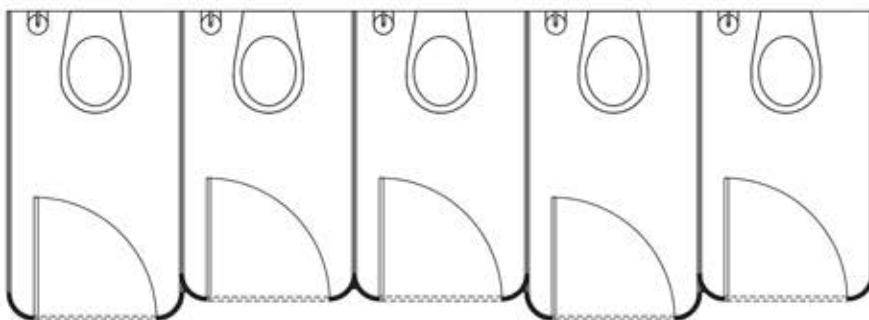
reddot design award
winner 2007

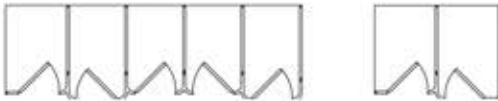
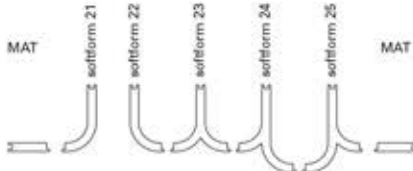


DESIGNPREIS
2007
NOMINIERT



product
design
award
2008 gold

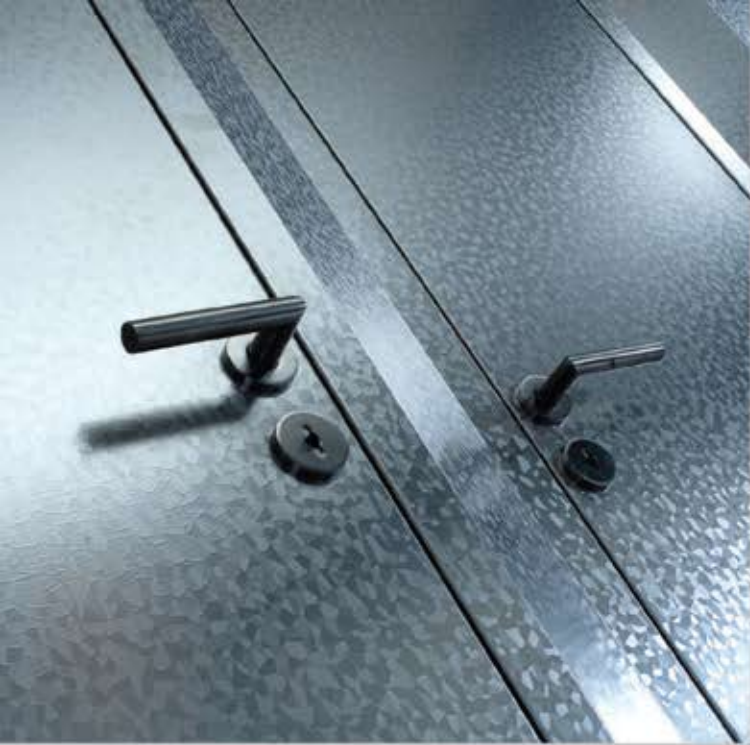


Cubicle system:	softcell
Test mark:	TÜV certified, GS safety approved ("proven safety")
Layouts:	rows of cubicles for any kind of room layout
	
Cubicle depth:	up to 1600 mm with a shadow gap joint; 1600 mm joint with a shadow gap joint plus additional leg
Cubicle width:	flexible, minimum front pilaster size 180 mm, joints with shadow gap
Cubicle height:	2000 mm, option 2135 mm, special heights on request
Panels:	42 mm thick composite construction, options available are aluminium, steel or stainless steel all with a foam core inlay
Pilasters:	pilasters include frames to aid noise reduction
	
Wall connection:	shadow gap 10 mm with anodised aluminium profiles
Cut-outs in partitions:	cut-outs in the partitions with u-profiles are available together with infills
Doors:	42 mm thick composite construction with foam inlay, opening inwards as a standard, as an option opening outwards (having both inward and outward opening doors in one row is not possible)
Door widths:	von 570 – 980 mm (Nennmaße); variabel
Door stop:	weltd door and pilaster
Door hinges:	as a standard aluminium anodised 3-roller hinge or 3-roller sprung loaded edge hinge for self-closing door, as an option in polished aluminium or in stainless steel, 6 fixings per hinge
Double latch lock, door lever handle:	as a standard aluminium door handle and indicator; options available in nylon and stainless steel
Single latch lock, door knob:	with aluminium, nylon or stainless steel fittings
Single turning knob:	available as an option
Head rail:	recessed; aluminium square profile 40 x 30 mm, as an option in stainless steel
Supporting legs:	supporting legs screwed to the floor made of stainless steel with stainless steel cover sleeve, as an option in anodised aluminium
Under panel clearance:	standard 150 mm, 80 – 200 mm possible
„Levitating“ system:	as a standard with recessed head rail and legs integrated in the partition (wall connection pilaster max. 250 mm), fastening to wall with angles, in case of plaster board walls without inlays a supporting leg is always required in the front
Modesty and sight screens:	30 mm thick composite construction elements, as an option made of toughened safety glass TSG





hardcell®



hardcell® | strong structure, folded design

Unique! The design of the innovative hardcell cubicle system was inspired by nature and the honeycomb structure of cells. The independent design of hardcell is particularly expressed in the asymmetrically folded front elements.

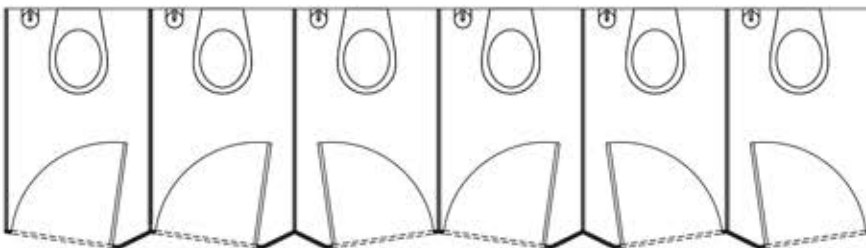
The unmistakable impression produced by this cubicle system results from the alternately broad and narrow front panels. The use of lines in the design of hardcell introduces a strict yet striking aesthetic quality to public washrooms. The unique 42 mm thick panels made of stainless steel, aluminium or steel strengthen the visual impact.



reddot design award
winner 2007



DESIGNPREIS
2008
NOMINIERT



Cubicle system	hardcell
Test mark:	TÜV certified, GS safety approved ("proven safety")
Layouts:	rows of cubicles for any kind of room layout
Cubicle depth:	up to 1600 mm with a shadow gap joint; > 1600 mm joint with a shadow gap joint plus additional leg
Cubicle width:	flexible, minimum front pilaster size 180 mm, joints with shadow gap
Cubicle height:	2000 mm, option 2135 mm, special heights on request
Panels:	42 mm thick composite construction, options available in aluminium, steel or stainless steel all with a foam core inlay
Pilasters:	<p>pilasters include frames to aid noise reduction</p>
Wall connection:	shadow gap 10 mm with anodised aluminium profiles
Cut-outs in partitions:	cut-outs in the partitions with u-profiles are available together with infills
Doors:	rebated; 42 mm thick composite construction with foam inlay, opening inwards as a standard, as an option opening outwards (having both inward and outward opening doors in one row is not possible)
Door widths:	from 570 mm up to 980 mm (nominal size), flexible
Door stop:	weltd door and pilaster
Door hinges:	as a standard aluminium anodised 3-roller hinge or 3-roller sprung loaded edge hinge for self-closing door, as an option in polished aluminium or in stainless steel, 6 fixings per hinge
Double latch lock, door lever handle:	as a standard aluminium door handle and indicator; options available in nylon and stainless steel
Single latch lock, door knob:	with aluminium, nylon or stainless steel fittings
Single turning knob:	available as an option
Head rail:	recessed; aluminium square profile 40 x 30 mm, as an option in stainless steel
Supporting legs:	supporting legs screwed to the floor made of stainless steel with stainless steel cover sleeve, as an option in anodised aluminium
Under panel clearance:	standard 150 mm, 80 – 200 mm possible
"Levitating" system:	as a standard with recessed head rail and legs integrated in the partition (wall connection pilaster max. 250 mm), fastening to wall with angles, in case of plaster board walls without inlays a supporting leg is always required in the front
Modesty and sight screens:	30 mm thick composite construction elements, as an option made of toughened safety glass ESG





classiccell®



classiccell – purity of form and clarity of design. Already a design classic! Timelessly elegant and straight-lined.

The smooth-surfaced front with welded doors can either be with supporting legs in the front pilasters or with legs recessed in the partitions, as the support-optimised version.

An especially graceful design that appears to float. This is achieved by having a recessed head rail and recessed legs.



Exclusively available from KEMMLIT – pilasters incorporate the head rail which allows a reduced gap between floor and partition/ceiling and partition. This can be a minimum of 80 mm which offers optimal ventilation and privacy.

The head rail is integrated invisibly into the pilasters – state of the art construction and design!



classiccell – privacy! The doors and pilasters are perfectly integrated into the washroom thanks to a shadow gap connection to the ceiling, walls and the floor. The wall connection is also available with u-profiles.

The floor-to-ceiling partition walls are 42 mm thick composite elements with special inlays which guarantee a high degree of privacy and noise reduction. The doors are designed with narrow gaps between the ceiling and the floor. Classiccell floor-to-ceiling is also available where there is either a blockwork or stud partition.

Cubicle system	classiccell
Test mark:	TÜV certified, GS safety approved ("proven safety")
Layouts:	rows of cubicles for any kind of room layout, special solutions on request
Cubicle depth:	up to 1600 mm hairline joint without leg; > 1600 mm joint with H-profile or shadow gap and additional leg, refer to technical details
Cubicle width:	flexible, minimum front pilaster size 180 mm, hairline joints or joints with shadow gap as an option
Cubicle height:	2000 mm, option 2135 mm, special heights on request, max. height of elements 2740 mm
Panels:	42 mm thick composite construction, options available are aluminium, steel or stainless steel all with a foam core inlay; pilasters and doors rebated creating a flush front which aids in noise reduction
Wall connection:	as a standard with anodised aluminium u-profiles, as an option shadow gap 10 mm with anodised aluminium profiles
Angular wall connection:	with special profiles possible
Angular pilasters:	with special profiles possible
Cut-outs in partitions:	cut-outs in the partitions with u-profiles are available together with infills
Doors:	rebated; welded door and pilaster, 42 mm thick composite construction with foam inlay, opening inwards as a standard, as an option opening outwards
Door widths:	570 mm / 620 mm / 750 mm / 980 mm (nominal size), special widths possible
Door hinges:	standard aluminium anodised 3-roller hinge or 3-roller sprung loaded edge hinge for self-closing door, as an option in polished aluminium or in stainless steel, 6 fixings per hinges
Double latch lock, door lever handle:	as a standard aluminium door handle and indicator, options available in nylon and stainless steel
Single latch lock, door knob:	aluminium door knob, options available in nylon and stainless steel; or construction as a single turning knob
Grab bar:	aluminium grab bar in three lengths S, M, L with LED-closing mechanism and integrated fl at battery 4,5 V, as an option without LED-closing mechanism
Head rail:	aluminium square profile 54 x 43 mm above the door front, as an option for cubicles in a row recessed aluminium or stainless steel profile 40 x 30 mm
Supporting legs:	aluminium supporting legs screwed to the floor with aluminium cover sleeve, as an option in stainless steel with brushed stainless steel cover sleeve; supporting legs glued to the floor are possible in the door front
Under panel clearance:	as a standard legs in the door front, 150mm; 80 – 200 mm possible
Without u.p.c.:	connection to the floor with shadow gap and 30 mm gap underneath the door for ventilation
Standoptimiert:	legs integrated in the partition, middle pilaster max. 500 mm and max. 250 mm from partition; fastening to the wall with angles; where there are plasterboard walls without inlays, a leg is always required in the front; for single cubicles without partition the leg is always required
"Levitating" system:	with recessed head rail and legs integrated in the partition (please refer to "support-optimised")
Designed gap system:	min. 80 mm distance to the ceiling; with head rail invisibly integrated in the pilasters
Floor-to-ceiling:	room-height pilasters, partitions and doors, max. room height 2800 mm; suitable ceiling structure must be guaranteed
Modesty and sight screens:	30 mm thick composite construction elements, as an option toughened safety glass TSG





variocell®



variozell – with a proven record of success.

Corner and joint elements, door stop and wall connection are all part of the tried and tested, **flexible profilesystem** from KEMMLIT.

The horizontally mounted **head rail** is available in oval, angular and smooth-surfaced models; in satin anodised or powder-coated aluminium, as well as in stainless steel. To ensure exact fitting joints the stabilizer is fitted with a fine end collar. With the support optimised variozell solution both the head rail and supporting legs are fitted along the partition panels of the cubicles, thus out of sight.

The **wall** connection at the front can be constructed using shadow gaps or U-profiles. Angular wall connections are also possible.

The aluminium **door stop profiles** are fitted with rubber cushions to avoid loud door slamming. The walls and doors are made of 30 mm composite panels with a foam inlay for sound absorption. If particularly stringent fire safety is required it is possible to include specially developed canted metal inlays.

variozell can be installed with a variety of different locks and fittings. The KEMMLIT sales representatives will be happy to explain the advantages of variozell in detail.

Separating the washroom. Room-high or supported partitions – individually and space-optimized.

Changing cubicles. Suspended changing cubicles with central locking and an integrated bench are often found in swimming pools or the wellness and leisure sectors. variozell in aluminium is ideally suited to these particular requirements and climatic conditions.

Suspended cubicles. Solid aluminium suspended head rail – no need for ground supports. This technically refined solution is excellently suited to protecting insulation layers and underfloor heating.

Shower partitions. Wall elements and panels are manufactured in sea-water-resistant aluminium. Ideally suited for use in all wet spaces.

Special solutions. Floor-to-ceiling cubicles, cubicles for the disabled, changing cubicles, upper glass panels, upper panels, space saving doors, swing doors, sliding doors, urinal screens, modesty screens, angular wall connections, angular pilasters, finger protection, combination with lockers, shelving and benches.

Cubicle system	variocell
Test mark:	TÜV certified, GS safety approved ("proven safety")
Layouts:	rows of cubicles for any kind of room layout, special solutions on request 
Cubicle depth:	up to 1600 mm with hairline joint; > 1600 mm joint with H-profile with additional supporting leg
Cubicle width:	flexible, minimum front pilaster size 40 mm, joints with H-profile
Cubicle height:	2000 mm, option 2135 mm, special heights on request 
Panels:	30 mm thick composite construction with a foam core inlay
Wall connection:	u-profiles and as an option shadow gap 10 mm with anodised aluminium profilest
Angular wall connection:	with special profiles possible – no shadow gaps
Angular pilasters:	with special profiles possible – no shadow gaps
Cut-outs in partitions:	cut-outs in the partitions with u-profiles are available together with infills
Doors:	door edges not rebated, composite construction with foam inlay
Change of door opening::	having both inward and outward opening doors in one row is possible
Door widths:	570 mm / 620 mm (steel) or 650 mm (aluminium) / 750 mm / 980 mm (nominal size), special widths possible
Door closing:	aluminium profiles
Door hinges:	standard aluminium 2-roller rising and falling hinge, options include 2-roller edge hinge in stainless steel or aluminium, and finger protection with pivot hinge)
Double latch lock with door lever handle:	nylon door handle and turn lock, and as an option with aluminium or stainless steel handle
Single latch lock, door knob:	standard with nylon door knob, options in aluminium and stainless steel
Single turning knob:	made of satin anodised aluminium
Central locking:	central locking system situated underneath bench seating or as an overhead system
Saloon doors:	single and double leafed
Sliding doors:	available
Head rail:	running above the door front 1.) special square aluminium profile 42 x 43 mm, as an option recessed 2.) special oval aluminium profile 55 x 43 mm 3.) stainless steel profile 40 x 30 mm as an option recessed
Supporting legs:	aluminium supporting legs screwed to the floor with nylon cover sleeves, options include floor at anodised aluminium cover sleeve, or stainless steel leg with flat stainless steel cover sleeve
Legs glued to floor:	available for constructions with supporting legs in the door front (except for free-standing cubicles)
Under panel clearance:	as a standard with legs in the door front, 150mm; adjustable heights 80 – 200 mm
Without u.p.c.:	pilasters and partitions sit on a 40 mm aluminium profile; doors with 0 to 40 mm under panel clearance (ventilation)
Support-optimised:	legs integrated in the partition, middle pilaster max. 500 mm and max. 250 mm from partition; fastening to the wall with angles; where there are plaster board walls, without inlays, a leg is always required in the front; for single cubicles without partition the leg is always required
Suspended system:	with suspended beam; 50 x 150 mm or 50 x 200 mm
Floor-to-ceiling with connection to ceiling:	with u-profiles and upper panels placed on top of the head rail
Upper panels:	same material as partitions; up to 650x1800 mm without joint
Upper glass panel:	made of toughened safety glass 6 mm or of plexiglass 5 mm, enclosed in aluminium profile frame
Curtain rails:	integrated in the head rail, made of anodised aluminium
Climb over protection (anti peep rails):	solid tube profiles made of anodised aluminium
Modesty and sight screens:	30 mm thick composite construction elements (aluminium or steel), as an option made of toughened safety glass



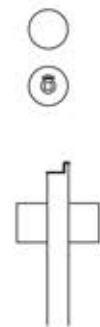
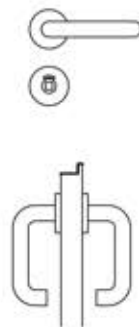
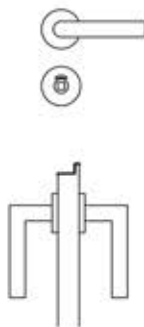
cell® | handles and knobs

Designed aluminium or stainless steel handles, which include an indicator and emergency release. In classic L-shape or as safety handle in U-shape.

Ergonomic aluminium or stainless steel door knobs, which include an indicator and emergency release in metal. Anodised aluminium single turning knob is an option.

Handles and knobs are also available in coloured nylon to give the clients more flexibility.

All handles and knobs are of outstanding quality, easy to clean and durable, making them especially suitable for highly frequented public washrooms.





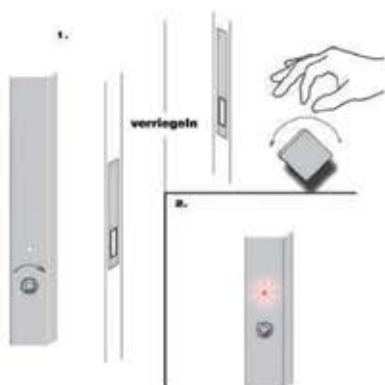
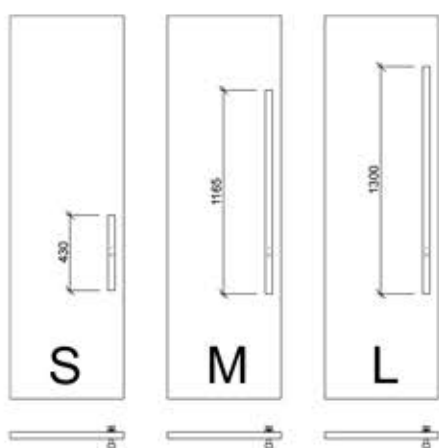
cell® | hinges and legs

The legs are integral elements for the stability and durability of the cubicle system. KEMMLIT equips all cubicle systems with solid and elegant legs, either placed in the front pilasters or for support-optimised systems, in the partition. The legs are always in a fixed connection with the system elements, they come with a stainless steel core and M12 nut/ bolt which allows height adjustment, either in aluminium or stainless steel with a solid cover sleeve. System variocell offers an option with coloured nylon cover sleeves.

The hinges used for classiccell, softcell and hardcell are extremely durable, maintenance free, and have 6 fixings per hinge. The solid aluminium or stainless steel edge hinges can be equipped with an integrated spring for self-closing doors.

For variocell there is a choice between two-roller rising and falling hinges in aluminium, or two-roller edge hinges in stainless steel or aluminium. On request with integrated finger protection with pivot hinges.





cell® | grab bar with LED indicator

Apart from the classical door closing with door knob or handle with red-/white indicator there is an option available with grab bar, turn lock and integrated LED indicator – especially for classiccell.

The innovative grab bar is made of anodised aluminium and is available in three lengths: Small with a total length of 430 mm, Middle 1165 mm and Large 1300 mm – ideal for extremely high doors.

The door lock is the same as a standard turn lock with a metal square as emergency release on the outside.

The electronic LED indicator is elegantly and smoothly integrated in the grab bar and fully replaces the conventional red-/white indicator.

When turning the square knob on the inside, the door is closed and the red LED lights up on the outside. When the door is open, the LED indicator remains unlit.

The power supply is a flat battery that is integrated in the top inside of the door. When used normally the battery needs replacing only once a year. The battery is easily replaced.



cell® | washroom accessories

Cubicles and accessories are part of a single system. Please bear this in mind when designing your washroom facilities. KEMMLIT offers an almost unlimited range of options with its exclusive stainless steel, aluminium or nylon accessories.

The range of accessories is grouped into three product lines Alu Line, INOX Line and Value Line. In terms of material, form, colour and design, all of these accessories are suitable for top-class washroom facilities.

Special wall reinforcements and inlays are integrated into the high-quality cell cubicle systems in order to ensure lasting and vandal-proof use of the accessories.

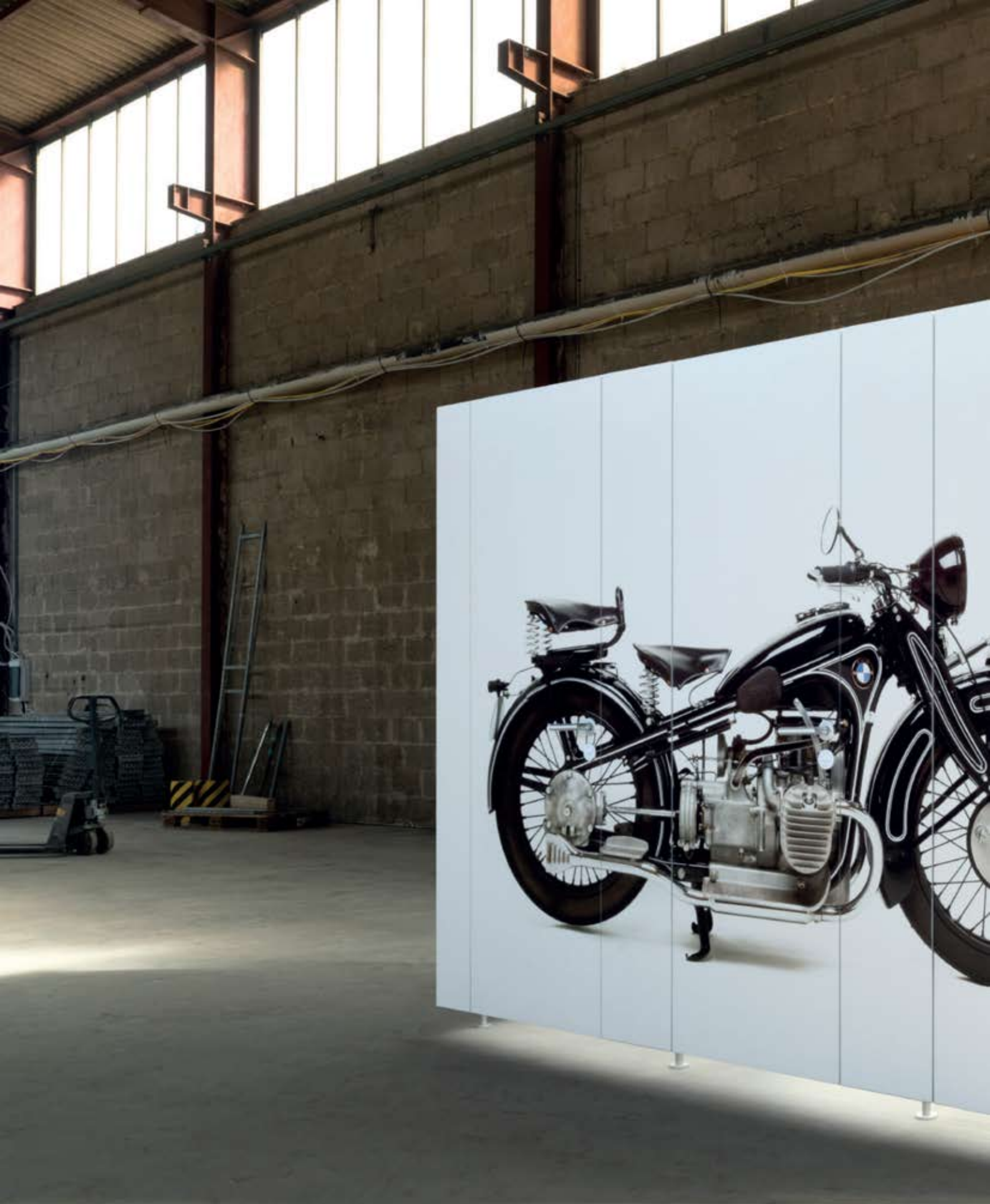
They are fastened in one site visit by professionally trained and experienced KEMMLIT installers.

We are also happy to discuss special solutions for your requirements. Talk to your personal KEMMLIT advisor to explore all design and technical options.

Technical details for the accessory range can be found in our accessories brochure.

Order your copy now: www.kemmlit.com



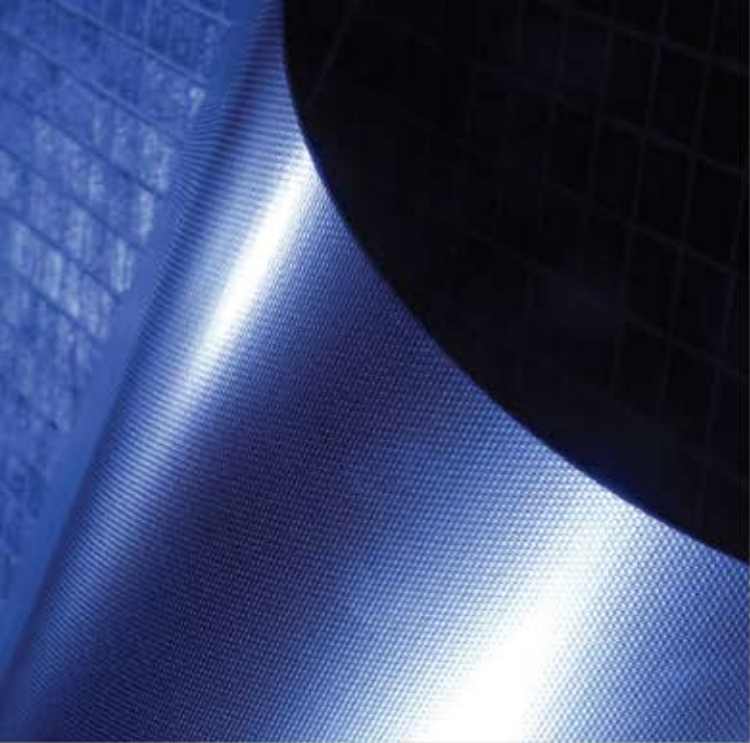


Digital print. Cubicle system classiccell with individual motives – nearly endless possibilities!



cell[®]





cell® | material

Stainless steel

The stainless steel can be individually applied in a variety of different surfaces and structures. This material is anti-corrosive, easy to clean and maintains its elegant look for many years.

Steel

The zinc-dipped steel has a visible colour-coating. The colours also have a reinforced polyester coating with a portion of embedded perspex. This increases its resistance to scratching and UV light. On the inside, there is also a protective varnish coating to ensure durability.

Aluminium

Aluminium, which is widely used in ship-building is resistant to corrosion at its cut edges. It is also excellently suited to recycling. The special 'crystal coat' surface is environmentally friendly and easy to clean. Thanks to its UV-resistance, it is also suitable for outdoor locations.

Differences in the original colours and metal materials are common and underline the special characteristics of the cubicle system. Especially for stainless-steel surfaces where special effects in colour and structure are possible, due to exposure to light and reflection.

stainless steel:



Natural 4113



Bronze 4213



Platinum 4313



Linnen L



Brushed G



Patterned A
(Austenit)

aluminium:



Traffic white 9317
similar to RAL 9016



Agate grey 7317
similar to RAL 7038



Anthracite 7603
similar to RAL 7005



Dark blue 5603
similar to RAL 5008



Dark red 3603
similar to RAL 3004



Deep black 7613
similar to RAL 9005

steel:



Traffic white 9317
similar to RAL 9016



Light grey 7208
similar to RAL 7035



Silver grey 7303
similar to RAL 9006
(metallic)



Metal grey 7507
similar to 9007



Copper brown 8307
similar to NCS S 4030-Y30R
(metallic)



Brilliant black 7907
similar to RAL 9017



Digital print



BiColor **

Profiles, hinges, supporting legs and furniture:



White 02*
similar to RAL 9016



Manhattan 05*
similar to NCS 2801-Y36R



Anthracite 03*
similar to RAL 7043



Dark blue 04*
similar to RAL 5003



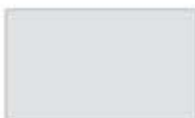
Red 11*
similar to RAL 3003



Dark red 01*
similar to RAL 3005



Yellow 10*
similar to RAL 1023



Satin anodised 08
similar to E6/EV1

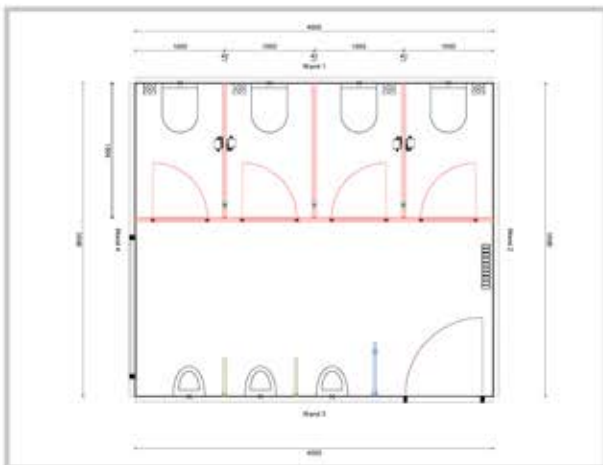


Stainless steel V2A 12

**Colour concept
valid from 07/2017**

* for variocell coloured profiles, hinges and legs are possible

** The composite construction of the cell elements allows for different colours on the inside and the outside of the panels and doors – cell BiColor! Special colours and individual digital prints are available on request. A surcharge and longer delivery time might be necessary. Due to typographic reasons, the colours shown may differ slightly from the original colours.



KEMMLIT® | consulting and planning

As an ideal complement to personal advice provided on site, Kemmlit also offers a rapid, true-to-scale two- and three-dimensional planning service for rooms and products, which highlights specific product details and in doing so ensures reliable planning.

By consulting an expert advisor from KEMMLIT, washroom facilities can be designed to meet customer's precise requests and requirements. KEMMLIT products such as cubicles, locker systems, vanity units, baby changing stations, grooming shelves, benches, doors and door frames can be integrated in the drawing. The room situation can be adjusted virtually according to the requested constructions, dimensions and colours.

For schools, public facilities or industrial buildings – the realistic detailed drawing integrates also the customer's light and colour concept, making it easy to experience one's vision. Thanks to the professional and customised planning service, an amazingly realistic impression of the client's design is gained in advance.

KEMMLIT supports your project from the initial idea through to the completed installation on site – irrespective of project scope.



ON-TIME INSTALLATION

98% of all requested delivery
dates can be fulfilled



FASTEST PRODUCTION & INSTALLATION

Prompt and on-schedule
delivery



IMMEDIATE REPAIR

Immediate repair
when you need it



HIGHEST PRODUCT QUALITY

Top quality in terms of material and
processing



WE ARE IN YOUR VICINITY

Individual consulting service by
professional sales representatives

**Individual
sanitary fittings
by KEMMLIT®**

For example:

Changing cubicles
Toilet cubicles
Locker systems
Shower cubicles
Vanity units
Shelving
Bench seating
Baby changing stations
Doors and frames
Accessories

KEMMLIT UK

Bays Platt,
Skirmett,
Henley-on-Thames,
Oxfordshire
RG9 6TD
United Kingdom

Tel: +44(0)1491 638606
Fax: +44(0)1491 638072

www.kemmlituk.com
info@kemmlituk.com

