

Uniclass	L824	EPIC	Q24
CI/SfB	(74)	X	

QUALITY WASHROOM PRODUCTS

DISTRIBUTOR BROCHURE

2010



Tel: +44(0)1491 638606
Fax: +44(0)1491 638072



Skirmett
Washrooms

EH2-FR Safehands Horizontal Nappy Changing Unit



Durable and versatile, this easy to use changing unit is our most popular model. It folds away neatly when not in use to maximise floor space.

- Slimline and compact
- Double locking safety strap
- Warning labels and braille signage
- Dual liner dispenser (for liners over page)
- Bag hooks
- Load tested to 113kg with minimal deflection



CONFORMS TO BS:EN:2221 STANDARDS

Dimensions: 807mm (w) x 406mm (h) 102mm projection - *closed* 457mm projection - *open*
Colour: Neutral

Recommended fixing height for all Nappy Changing Units is between 790mm - 900mm

EZH EZ Mount™ Backer Plate



Options: EZH EZ Mount backer plate for EH2-FR
 EZV EZ Mount backer plate for EV2-FR

EZ Mount™ Backer Plate has been designed for the EH2-FR & EV2-FR units. It is an optional, but unique design which enables the unit to be installed easily, with only one person.



It also facilitates difficult and retrofit installations by eliminating the need for structural blocking and ensuring connection with two studs.

EV2-FR Safehands Vertical Nappy Changing Unit

- Slimline and compact
- Double locking safety strap
- Warning labels and braille signage
- Dual liner dispenser (for liners over page)
- Bag hooks

Dimensions: 490mm (w) x 810mm (h)
 102mm projection - *closed*
 820mm projection - *open*

Colour: Neutral



100-BM Safehands Bench Mounted Changing Unit



- Fixes onto standard 600mm work surface
- Safety strap

Dimensions: 960mm (w) x 550mm (d)

Colour: White

101-ES Titan Heavy Duty Changing Unit



- Extremely robust changing unit for heavy use applications
- Ideal for vandal prone areas
- Supports up to 300kg
- Optional liner dispenser - 101-PRH & lines 101-PLC

Dimensions: 955mm (w) x 782mm (h) x 115mm *closed*
 955mm (w) x 782mm (h) x 626mm *open*

Colour: White/stainless mountings



103-SNB Safehands 50L Nappy Bin



- 50 litre capacity
- Unique attractive design
- Chute lid for maximum hygiene
- Takes clinical waste sacks 056-CWR

Dimensions: 400mm (w) x 530mm (h) x 360mm (d)
Colour: Grey

103-NLB Safehands 65L Nappy Bin



- 65 litre capacity
- Robust polyethylene
- Chute lid for maximum hygiene
- Takes clinical waste sacks 056-CWR

Dimensions: 410mm (w) x 710mm (h)
Colour: White, Grey or Yellow

103-BQS Safehands Child Safety Seat



- Keeps child safely off the floor
- 3 point harness for extra safety
- Wall mounted

Dimensions: 305mm (w) x 387mm (h)
 76mm projection - *closed*
 343mm projection - *open*
Colour: Neutral

**NEW S/S NAPPY BIN
 ON PAGE 14**



106-SSB Safehands Changing Liner Dispenser



- Holds 036-LCR & 136-LCR liners
- Stainless steel
- Wall mounted

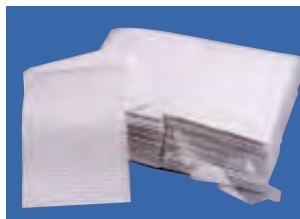
Dimensions: 137mm (w)
 223mm (h)
 112 mm (d)
Colour: Stainless steel

056-CWR Clinical Waste Sacks



- Strong yellow waste sack
- Fits 103-SNB and 103-NLB Nappy Bins

036-LCR Safehands Changing Liners



- Absorbent liners for changing unit surface
- Pack 500
- Includes plastic lining for extra protection

104-NCS Sign - Baby Change



- 76mm diameter
- Circular stainless steel

Option

136-LCR Changing liners without plastic lining

100-SSC-SM Clad Stainless Nappy Changing Unit



- EH2 polyethylene unit - clad in brushed stainless steel
- Attractive design
- Surface mounted or wall recessed

Wall recessed option 100-SSC-R



Dimensions: 950mm (w) x 548mm (h) x 100mm *closed*
950mm (w) x 548mm (h) x 445mm *open*

Dimensions: 950mm (w) x 548mm (h) x 5mm *closed*
950mm (w) x 548mm (h) x 345mm *open*

100-SS-SM Full Stainless Nappy Changing Unit



- Brushed stainless steel construction
- Attractive and stylish design
- Surface mounted or wall recessed

Wall recessed option 100-SS-R



Dimensions: 900mm (w) x 590mm (h) x 102mm *closed*
900mm (w) x 590mm (h) x 545mm *open*

Dimensions: 900mm (w) x 590mm (h) x 12mm *closed*
900mm (w) x 590mm (h) x 445mm *open*

100-SSV-SM Full Stainless Vertical Nappy Changing Unit



- Brushed stainless steel construction: vertical configuration
- Attractive and stylish design
- Surface mounted or wall recessed

Wall recessed option 100-SSV-R



Dimensions: 590mm (w) x 903mm (h) x 120mm *closed*
590mm (w) x 903mm (h) x 876mm *open*

Dimensions: 590mm (w) x 903mm (h) x 28mm *closed*
590mm (w) x 903mm (h) x 786mm *open*

100-SSE-SM Special Needs Changing Unit



- Designed for changing adults or children with special needs
- Brushed stainless steel construction
- Can be surface mounted or wall recessed
- Weight capacity up to 181kg

100-SSE-R Wall Recessed Option

Dimensions: 1645mm(w) x 595mm(h) x 102mm *closed*
1645mm(w) x 595mm(h) x 545mm *open*

Dimensions: 1645mm (w) x 595mm (h) x 12mm *closed*
1645mm (w) x 595mm (h) x 455mm *open*

100-HAC Height Adjustable Changing Unit

- Ideal for changing disabled people
- Hydraulic or electric options
- Strong - able to lift 160kg
- Colour options for changing surface



Dimensions: 1200mm or 1500mm (w) option
x from 460mm to 950mm (h)
x 650mm (d)

Options: 100-HAC Hydraulic (Pedal operated)
100-HAE Electric

100-FC Wall Mounted Folding Couch



- Wall mounted
- Folds down against the wall when not in use
- Sturdy design
- Colour options for mattress

Dimensions: 1810mm (L) 610mm (w) 720mm (h)

104-CBU Combination Unit



- Quality stainless unit comprising hand towel dispenser, hand dryer and optional waste bin all in one
- High performance automatic 2.2kw hand dryer
- Wall mounted or cavity recessed options

Dryer

348mm (w) x 644mm (h) x 173mm (d)

Bin

348mm (w) x 710mm (h) x 145mm (d)

Combination

348mm (w) x 1355mm (h) x 173mm (d)

104-EMC Automatic Hand Towel Dispenser & Bin Combination Unit (Recessed)



- Unique automatic hand towel dispenser & bin wall recessed for attractive streamline finish
- Battery powered or mains operated
- Dispenser only can be surface mounted
- Takes 111-EMS paper rolls



- Options:**
- 104-EMC Dispenser & Bin Combi Unit
437mm (w) x 1422mm (h) x 197mm (d)
 - 104-EMD Dispenser Only
338mm (w) x 417mm (h) x 210mm (d)

104-AWS Automatic Wash Station



- Complete hand washing facility combines soap, water and hot air
- Brushed stainless steel
- Wall recessed
- Connects to single-phase 220/240v 50Hz
- Waste valve supplied for connection to standard 32mm plastic waste pipe
- The unit requires no hot water supply as an integral boiler heats water to the required temperature

Dimensions: 422mm (w) x 815mm (h) x 25mm (d) plus recess



109-ECO EcoDry Fast Hand Dryer



- Up to 85% energy reduction over traditional dryers
- Robust and strong
- Variable speed setting
- Dries hands in 10 seconds
- 3 year warranty



Dimensions: 205mm (w) x 287mm (h) x 180mm (d)
Colour: Brushed stainless steel

109-MSW Supreme Hand Dryer



- Power rating 2.1kw
- Hard steel casing
- 5 year warranty
- Excellent "all round" dryer

Dimensions: 320mm (w) x 210mm (h) x 175mm (d)
Options: 109-MSS Chrome steel
 109-MSW White steel

109-TWB Twister Hand Dryer



- Power rating 2.4kw
- Hand and face dryer
- 5 year warranty

Dimensions: 284mm (w) x 248mm (h) x 202mm (d)
Options: 109-TWC Chrome steel
 109-TWB Brushed steel
 109-TWP Push start chrome steel
 109-TWI Push start brushed steel

109-SAS Super Hand Dryer



- Power rating 2.0kw
- Steel housing
- Silent, speedy drying

Dimensions: 295mm (w) x 310mm (h) x 135mm (d)
Options: 109-SAS Brushed stainless
 109-SAP Polished stainless
 109-SAW White steel

104-VHD Veltia Air Stream Hand Dryer



- Fast effective hand drying
- No hand movement required
- Low energy consumption
- Microban antibac protection
- 3 year warranty



Dimensions: 300mm (w) x 617mm (h) x 195mm (d)
Colour: White, Silver Aluminium, Bordeaux, Deep Blue

109-ST5 Styler Hair Dryer



- Powerful 1800w
- 2 speed, 3 heat control settings
- Wall mounting bracket

Dimensions: 195mm (w) x 220mm (h)
Colour: Dark grey/black

109-SDC Styler Deluxe Hair Dryer



- Coin, token or button operated, incorporating the 109-ST5 handset
- Slimline stainless steel casing with mirrored front panel

Dimensions: 200mm (w) x 260mm (h) x 90mm (d) (plus dryer)
Options: 109-SDB Button operated
 109-SDC Coin operated
 109-SDT Token operated

109-BH5 Elegance Hair Dryer



- Wall mounted, 1200w
- Auto start/stop
- Suitable for wet areas

Dimensions: 200mm (w) x 570mm (h)
Colour: White

109-IHD Heavy Duty Wall Mounted Hair Dryer



- Heavy duty
- Ideal for public leisure centres
- 5500rpm motor

Dimensions: 292mm (w) x 580mm (h) x 235mm (d)
Colour: White/black hose

109-AFD Automatic Air Freshener Dispenser



- Programmable
- Battery operated
- Can be wall mounted

Dimensions: 95mm (w) x 274mm (h) x 120mm (d)
Colour: White

109-TWC Battery Free Air Freshener



- Innovative Air freshener powered by natural reaction
- Very effective odour control
- Environmentally sound
- Takes 109-TCR refills

Dimensions: 95mm (w) x 274mm (h) x 120mm (d)
Options: 109-TWC White 109-TCC Chrome

102-DSD Soap Dispenser



- 1L refillable
- Easy hand push operation
- Lockable
- Can be used for Sanitiser
- ABS Construction

Ideal for



Dimensions: 115mm (w) x 250mm (h) x 115mm (d)
Colour: White + viewing window

102-FSD Foam Soap Dispenser



- Holds 800ml cartridge
- Dispenses foam soap
- Lockable
- High impact material

Dimensions: 135mm (w) x 240mm (h) x 110mm (d)
Colour: White/light grey push lever

102-DJD Jumbo Toilet Roll Dispenser



- Holds Jumbo toilet rolls
- Lockable
- High impact material

Dimensions: 312mm (diam) x 120mm (d)
Colour: White + viewing window

102-DMJ Mini Jumbo Toilet Roll Dispenser



- Holds Mini Jumbo toilet rolls
- Lockable
- High impact material

Dimensions: 270mm (diam) x 120mm (d)
Colour: White + viewing window

102-DBP Toilet Tissue Dispenser



- Takes Bulk Pack or Multi Flat toilet tissue
- Lockable
- High impact material

Ideal for



Dimensions: 141mm (w) x 287mm (h) x 138mm (d)
Colour: White + viewing window

102-DHT Hand Towel Dispenser



- Dispenses Interleaved or C-fold towels
- Lockable
- High impact material

Ideal for



Dimensions: 275mm (w) x 365mm (h) x 120mm (d)
Colour: White + viewing window

102-DMC Mini Centrefeed Dispenser



- Takes Mini Centrefeed rolls
- Lockable
- High impact material

Dimensions: 141mm (w) x 287mm (h) x 139mm (d)
Colour: White

102-DCF Centrefeed Dispenser



- Takes Centrefeed rolls
- Lockable
- High impact material

Dimensions: 220mm (w) x 240mm (h) x 220mm (d)
Colour: White

107-CTS Counter Top Soap Dispenser



- Mounted on vanity top
- Refillable soap container

Dimensions: 60mm (above counter)
250mm (below counter)

Colour: Chrome plated brass

107-VSP Vertical Soap Dispenser



- Refillable 1.2L capacity
- Lockable

Dimensions: 121mm (w) x 206mm (h) x 72mm (d)

Options: 107 VSP Brushed stainless
107 VSPP Polished stainless

107-HDD Heavy Duty Soap Dispenser



- Refillable or cartridge .8L capacity
- Heavy duty & lockable
- Easy to use

Dimensions: 120mm (w) x 255mm (h) x 120mm (d)

Colour: Brushed stainless steel

107-ASD Automatic Soap Dispenser



- No touch, auto dispenser
- Battery operated
- Refillable .95L capacity

Dimensions: 110mm (w) x 265mm (h) x 115mm (d)

Colour: Brushed stainless steel

107-SFS Foam Soap Dispenser



- Holds 800ml cartridge
- Dispenses foam soap
- Lockable
- Easy to use

Dimensions: 135mm (w) x 240mm (h) x 110mm (d)

Colour: Brushed stainless steel

107-MXT Hand Towel Dispenser



- Holds C-fold or multifold towels
- Lockable

Dimensions: 280mm (w) x 370mm (h) x 102mm (d)

Options: 107-MXT Brushed stainless
107-MXTP Polished stainless
103-WHT White steel

New Hair and Body Dryer

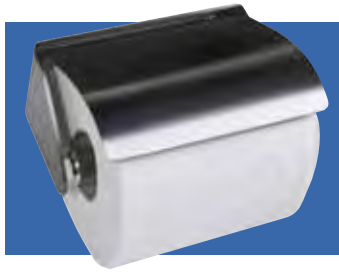
Available soon
please ask for
details



See Page 18 for
Hand Sanitiser
Dispenser



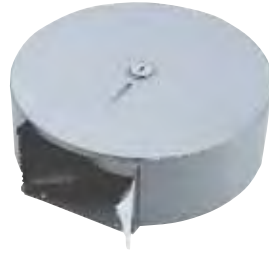
107-SRD Conventional Toilet Roll Holder



- Takes conventional toilet rolls
- Simple and stylish

Dimensions: 135mm (w) x 70mm (h) x 98mm (d)
Options: 107-SRD Brushed stainless
 107-SRDP Polished stainless

107-JJT Jumbo Roll Dispenser



- Takes jumbo toilet rolls
- Heavy duty - with solid back plate for high strength
- Lockable

Dimensions: 360mm (dia) x 120mm (d)
Options: 107-JJT Brushed stainless
 103-WJT White steel (open back)

103-BBP Toilet Tissue Dispenser



- Holds multi flat or bulk pack toilet tissue
- Steel construction with viewing strip
- Lockable

Dimensions: 137mm (w) x 223mm (h) x 112mm (d)
Options: 103-BBP Brushed stainless
 103-PBP Polished stainless
 103-WEP White steel

107-JMT Mini Roll Dispenser



- Takes mini Jumbo toilet rolls
- Lockable
- Full stainless back plate for high strength

Dimensions: 273mm (diam) x 120mm (d)
Options: 107-JMT Brushed stainless
 107-JMTP Polished stainless
 103-WMJ White steel (open back)

107-TTS Triple Toilet Roll Holder



- Takes 3 conventional toilet rolls
- Lockable
- Heavy duty
- Viewing window

Dimensions: 116mm (w) x 380mm (h) x 127mm (d)
Options: 107-TTS Brushed stainless
 107-TTW White steel

107-DTS Double Toilet Roll Holder



- Takes 2 conventional toilet rolls
- Lockable
- Heavy duty
- Viewing window

Dimensions: 116mm (w) x 288mm (h) x 127mm (d)
Options: 107-DTS Brushed stainless
 107-DTW White steel

Washroom Consumables

- See price list for washroom consumables to fit all dispensers in this brochure



Mirrors Acrylic and Polycarbonate



- A range of Acrylic and Polycarbonate mirrors are available which can be cut to any size required

Acrylic

3mm and 5mm thickness

Standard Size

105-ACM 600mm x 400mm

Polycarbonate Unbreakable - ideal for public areas
3mm and 5mm thickness

Standard Size

105-PCM 600mm x 400mm

105-WHM 'Wash Hands' Mirror



- Childrens mirror with graphics
- Encourages hand washing
- Designed to be stuck on wall behind taps

Dimensions: 400mm (w) x 600mm (h) x 20mm (d)
Colour: Brushed stainless frame

105-BML S/S Framed Mirror



- Stainless steel frame
- Strong laminate glass
- Easy to fit, and hard to remove

(Confirm lead times on this product)

Dimensions: 400mm (w) x 600mm (h) x 20mm (d)
Colour: Brushed stainless frame

107-AST Wall Mounted Ash Tray



- Designed for outdoor use
- Wall mounted
- Lockable
- Easy to use: removable inside liner
- Strong and robust

Dimensions: 152mm (w) x 255mm (h) x 64mm (d)
Colour: Grey and Dark Grey

107-SPB Sanitary Bio Pod Bin



- New unique sanitary waste bin
- Takes any sanitary waste including nappies
- No 'service' required
- Very user friendly: Plastic top and liner are replaced periodically
- Wall mounted or floor standing

Replacement code:

107-PLS Bio Pod Replacement 13L
107-PLL Bio Pod Replacement 26L

Options:

107-SPW 13L Pod White Plastic
107-SPL 26L Pod White Plastic
107-SPW 13L Stainless Steel
107-SPW 26L Stainless Steel

Dimensions: 13L 700mm (h) x 150mm (diam)
26L 800mm (h) x 200mm (diam)

103-BWL 50L Waste Bin



- Wall mounted or free standing
- Spring loaded push flap operation

Dimensions: 335mm (w) x 708mm (h) x 258mm (d)
Options: 103 BWL Brushed stainless
 103 WBL White steel

107-POB Pedal Operated Bin



- Polished stainless steel
- Plastic liner

Options & Dimensions: 107-POS 5L capacity
 320mm (h) x 210mm (dia)
 107-POM 12L capacity
 390mm (h) x 250mm (dia)
 107-POB 28L capacity
 530mm (h) x 300mm (dia)

103-BWM 30L Waste Bin



- Vandal resistant-anti vandal mountings
- Free standing or wall mounted
- Spring loaded push flap operation

Dimensions: 355mm (w) x 650mm (h) x 159mm (d)
Colour: Brushed stainless

107-PSB Push Bin



- Polished stainless steel
- Spring loaded push flap operation

Dimensions: 107-PSB 18L capacity
 480mm (h) x 250mm (dia)
 107-P35 35L capacity
 650mm (h) x 300mm (dia)

107-SNB Sanitary Waste Bin



- High quality stainless steel
- 20L capacity
- Vanity flap for maximum hygiene

Dimensions: 160mm (w) x 585mm (h) x 250mm (d)
Colour: Brushed stainless steel

103-SBP Plastic Sanitary Bin



- Pedal operated
- 15L slimline bin
- ABS plastic construction

Dimensions: 155mm (w) x 470mm (h) x 590mm (d)
Colour: White

DOC 'M' Grab Bar Pack



● Stainless steel

● White steel

Includes:

- 4 x 600mm Grab Bars
- 1 x 450mm Grab Bars
- 1 x Padded Backrest
- 1 x Hinged Support Rail

Options: 102-4PK White steel
102-DM4 Stainless steel



102-F Plastic Fluted Grab Bars



- Chose from 6 colours for colour contrasting
- Excellent grip for the less able
- No earthing required
- 3 fixing points and cover cap included

Colours as shown - must be specified when ordering

Options: 102-F30 300mm 102-F45 450mm
102-F60 600mm 102-F00 1000mm

Padded Back Rest



- Padded support
- Stainless frame

- Padded support
- White steel frame

Dimensions: 450mm (w) x 340mm (d)

Options: 102-X40 White steel
102-XBB Stainless steel



Straight Support Bar



- Brushed stainless steel
- 35mm diameter

Options: 102-G45 450mm
102-GS6 600mm
102-GS9 900mm

- White steel
- 35mm diameter

Options: 102-E30 300mm
102-E45 450mm
102-E60 600mm



Drop Down Support Bar

- Stainless steel

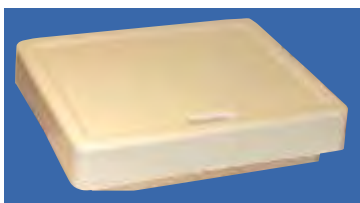
- White steel
- Includes toilet roll holder option

Options: 102-W29 White steel 785mm proj.
102-S47 Stainless steel 745mm proj.



If you require coloured steel grab bars, please call us for colour options and lead times - most colours available to order.

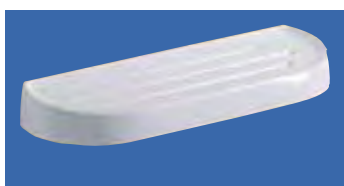
102-CLS Colostomy Bag Shelf



- Acrylic moulded detachable top for easy cleaning
- Stainless fixing bracket

Dimensions: 220mm (w) x 35mm (h) x 185mm (d)
Options: 102-CSL 525mm (w) x 35mm (h) x 230mm (d)

102-NCS Colostomy Bag Shelf



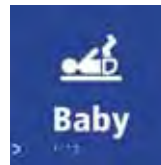
- Alternative design to 102-CLS
- Shelf slides onto fixings for easy removal

Dimensions: 300mm (w) x 30mm (h) x 110mm (d)
Colour: White



Mirrors
 See Page 14

102-BRB/BRT Braille Door Sign



- Braille signs which meet Government Legislation
- Made from fire rated plastic

Dimensions: 150mm x 150mm
Options: Various options - please confirm when ordering

102-RHK Clothes Hook



- High quality stainless steel
- Required in disabled toilets

Dimensions: 70mm (w) x 54mm (h) x 48mm (d)
Colour: Polished stainless frame

▶▶▶ see page 9 for dispensers for disabled toilets



102-EMA Toilet Alarm Pack



- Pack comprises:
 - Alarm controller/power supply
 - Ceiling pull switch
 - Disabled Toilet door sticker
- Overdoor light/sounder and reset point
- Requires standard fuse spur for fixing

102-S92 Fold up Shower Seat



- Foldable seat
- Height adjustable legs

Dimensions: 475mm (w) x 485-560mm (h) x 495mm (d)
Options: 102-S92 - Cut away seat
 102-S94 - Full seat

108-FAC First Aid Cabinet



- Metal lockable cabinet
- 1-20 person supply capacity
- Wall mounted

Dimensions: 300mm (w) x 460mm (h) x 140mm (d)

108-EWC Eye wash Cabinet



- Wall mounted
- Holds 2 x 500ml sterile eyewash bottles

Dimensions: 280mm (w) x 180mm (h) x 80mm (d)

108-MRC Medical Room Couch



- Ideal for first aid rooms
- Adjustable back

Dimensions: 1810mm (w) x 720mm (h) x 610mm (d)

Colour Options: Various Changing surface colours - confirm when ordering

108-RRC Rest Room Couch



- Low height for children or less able
- Ideal for schools

Dimensions: 1810mm (w) x 450mm (h) x 610mm (d)

Colour Options: Various Changing surface colours - confirm when ordering

108-CRD Medical Roll Dispenser



- Steel lockable dispenser
- Holds 20" medical rolls (see page 13)

Dimensions: 540mm (w) x 158mm (h) x 167mm (d)

108-HSD Hand Sanitiser Dispenser

- Strong plastic dispenser
- Hand push operation
- Takes 400ml hand sanitiser cartridge
- Lockable



Dimensions: 135mm (w) x 225mm (h) x 120mm (d)

108-EMD En Motion Automatic Hand Towel Dispenser



- Fully automatic operation for maximum hygiene
- Towel is presented when user passes hand across sensor
- Battery operated

Dimensions: 376mm (w) x 419mm (h) x 249mm (d)

Colour: Clear blue front/white



106-WMS Water Management Auto Flush System



- Automatic operation keeps urinals regularly flushed and clean
- Reduces water consumption, by up to 70%
- Avoids build up of scale
- Improves hygiene
- Easy to install (water pressure must be +5psi)

Dimensions: 147mm (w) x 104mm (h) x 97mm (d)

106-ASD Automatic Sanitiser Dispenser



- Automatically feeds sanitiser into water system
- Breaks down scale and uric salt build up
- Leaves a fresh smell
- Improves hygiene
- 106-BPR Bio Purinel 310ml refills digital dispenser

Dimensions: 130mm (w) x 202mm (h) x 80mm (d)



106-AMT Automatic Tap



- Cuts down on water consumption
- 'Surround sensor' technology guarantees activation and trouble free operation
- Touch free - for extra hygiene
- Battery powered - 4D batteries will last up to 3 years

Technical: Mounting hole - 222mm x 300mm
Operating water pressure - 7 - 175 psi
Operating temperature - 35 °f to 159 °f
Max running time - 30 seconds



2010



Skirmett Washrooms

PO Box 4709
Henely on Thames
Oxfordshire
RG9 9AJ
United Kingdom

Tel: +44(0)1491 638606
Fax: +44(0)1491 638072