

MINI JAWLOCK

ORIGINAL MOUSE TAIL, METAL INSERT, FLEXIBLE SEAL WITH THIN STRAP

The original Mini JawLock was developed to suit the security needs of a wide range of applications. It has a metal jaw locking mechanism which is highly resistant to tampering by heat to pull-back-release.



- Material**
- Seal Body - Polypropylene (PP)
 - Locking Jaw - Metal

Format Mat of 10s

Tensile Strength > 12kg-f/26.5lbs-f

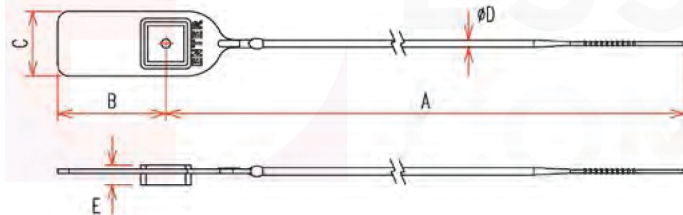
Temperature -20 to 60°C/-4 to 140°F

Features

- Variable loop reinforced with metal locking jaw
- Thin round smooth sealing strap (Ø2.0mm),
- Side tear-off options for 150mm, 200mm, 250mm

Benefits

- Enhanced tampering security and greater locking strength
- Designed to fit small apertures plus easy removal with tool



Product Dimension

Type	Product Code	Print				A mm [inch]	B mm [inch]	C mm [inch]	D mm [inch]	E mm [inch]	Removal	Tear off
		SN	L	SB	B							
Mini JawLock 150	MJ15NA	X	X	X		150 [5.90]	30 [1.18]	18 [0.71]	2 [0.08]	5.5 [0.22]	Tool	No
	MJ15SA	X	X	X							Hand	Yes
	MJ15NB	X	X		X	150 [5.90]	50 [1.97]	18 [0.71]	2 [0.08]	5.5 [0.22]	Tool	No
	MJ15SB	X	X		X						Hand	Yes
Mini JawLock 200	MJ20NA	X	X	X		200 [7.87]	30 [1.18]	18 [0.71]	2 [0.08]	5.5 [0.22]	Tool	No
	MJ20SA	X	X	X							Hand	Yes
	MJ20NB	X	X		X	200 [7.87]	50 [1.97]	18 [0.71]	2 [0.08]	5.5 [0.22]	Tool	No
	MJ20SB	X	X		X						Hand	Yes
Mini JawLock 250	MJ25NA	X	X	X		250 [5.90]	30 [1.18]	18 [0.71]	2 [0.08]	5.5 [0.22]	Tool	No
	NJ25SA	X	X	X							Hand	Yes
	MJ25NB	X	X		X	250 [5.90]	50 [1.97]	18 [0.71]	2 [0.08]	5.5 [0.22]	Tool	No
Mini JawLock 300	MJ30NC	X	X	X		300 [5.90]	30 [1.18]	18 [0.71]	2 [0.08]	5.5 [0.22]	Tool	No
	MJ30ND	X	X		X	300 [5.90]	50 [1.97]	18 [0.71]	2 [0.08]	5.5 [0.22]	Tool	No
Mini JawLock 400	MJ40NC	X	X	X		300 [5.90]	30 [1.18]	18 [0.71]	2 [0.08]	5.5 [0.22]	Tool	No
	MJ40ND	X	X	X		300 [5.90]	50 [1.97]	18 [0.71]	2 [0.08]	5.5 [0.22]	Tool	No

