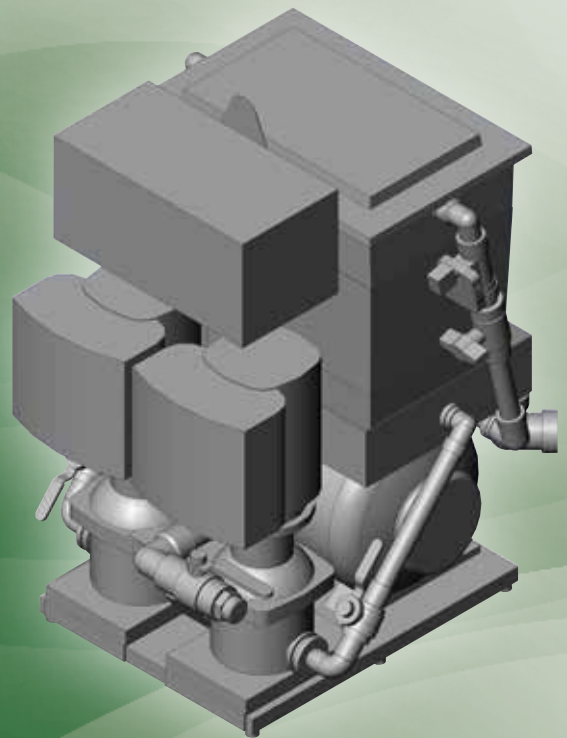
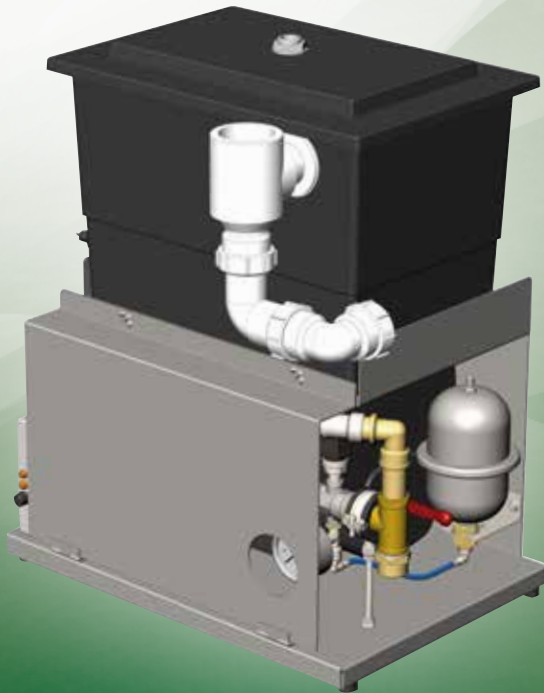




**The Water Regulations
Solutions Specialist**



Product Portfolio

Arrow Valves

Manufacture and distribute a wide range of innovative water associated products and services specifically designed to conform to the requirements of the latest Water Regulations helping contractors, architects and engineers protect, use and deliver water to the right place in the right way, keeping people safe.

Purpose

Protecting the public from illness and potential death via contaminated water through product innovation.

Arrow Academy

Always keen to share our expert knowledge and product innovation, we are offering technical CPD seminars on the subject of the Water Regulations. These will be held at our premises and delivered by Adrian Reeve, our technical director with over 10 years' experience in the water industry. Please visit our website for further details.



Contents

- P.3-5 Backflow Prevention Products
- P.6 Booster Pump Sets
- P.7 Pressure Regulating
- P.8 Heating Products
- P.9 Standpipes & Taps
- P.10 Isolating
- P.10 Temperature Control
- P.11 Expert Advice

Servicing & Commissioning

We are committed to ensuring that our customers get the most out of us and our products. Servicing & Commissioning ensures that our units remain in peak condition.

Our dedicated servicing department can offer:

- Annual Servicing
- On-Site Commissioning
- RPZ Testing

Board of Directors



Adrian Reeve
Director



Laura Ewers
Director



Mike McGuire
Director



Veronica Ewers
Director

Backflow Prevention Products

Boost-A-Break® - Model BTAB Break Tank and Booster Set

→ Model BTAB®

FLUID CATEGORY 5

Compact Break Tank assembly providing Fluid Category 5 protection via hygienic AB air gap.

Supplied on a stainless base plate, factory tested and ready for installation. Registered UK design 4036013

Fixed speed (models 700/900/1200/4-2/4-3/4-4) : 1 - 5 bar, fast filling cistern, up to 1.5 Lt/s output.

Variable speed (models 3-5/3-7/3-10/5-4/5-8/5-10/5-16) : variable speed inverter pump and a very fast filling cistern.

BMS outputs. Pump duties up to a remarkable 2.0 Lt/s output.

Duty Standby - one pump runs at a time or duty assist - allows the second pump to switch on as required - doubling output. Up to 2.4 Lt/s output.



BTAB DUTY STANDBY



BTAB5-8A



BTAB5-8A, Variable Speed Dual Pump

Duty Assist: Remarkably high duty (up to 3.7 Lt/s) whilst occupying a similar footprint to original units, ideal for installing in locations where floor space is of a premium. The skid mounted base occupies less than 0.5m² and allows the unit to be easily and securely transported. The integral 100 litre GRP Break Tank is rapidly filled via a triple solenoid valve arrangement.

Midi-Break® - Model BTMIDI Break Tank & Booster Sets

→ Model BTMIDI 1 / 2A / 3A

"Midi-Break" - Break Tank & Booster Set

Wall mounted Break Tank providing Fluid Category 5 protection via AB air gap.

Three available models offer progressively higher flow rates.

Supplied factory tested and ready for installation. Up to 0.30 Lt/s output.

FLUID CATEGORY 5



→ Model CSABATLF

Care Shower

Instantaneous hot water with Fluid Category 5 backflow protection via integral AB air gap. Consists of an electric shower and booster pump package.

Model CSABATLF meets BEAB Care Mark requirements as being safe for use by elderly, young or sick. Ideal for a special needs shower in schools etc.

FLUID CATEGORY 5



Backflow Prevention Products

Model BTHW

Ablution Plant

Delivers hot water at a safe temperature to a hose adjacent to a toilet or bidet, enabling users to clean themselves without the need for toilet paper and addressing the growing need for international toiletry facilities. Optional hose and trigger (model CSHT-1) and remote TMV (if >5m pipe run) - BTHW-OP3.

Fluid category 5 protection.

Size 15 mm

FLUID CATEGORY 5



Model AB18/T

Break Tank with AB Air Gap

Cistern with Type AB air gap providing Fluid Category 5 protection. Cistern to be elevated in order to supply by gravity. Inlet via float valve. Includes wall mounting bracket. Rainwater Header Break Tank (model AB18T) features 2nd float valve for mains water supply during electrical power failure or insufficient rainwater.

FLUID CATEGORY 5



Model AB2

Miniature Cistern with Type AB Air Gap

Miniature cistern with type AB air gap for Fluid Category 5 protection to nursing home baths. Intercepts existing hose. Gravity flow from ceiling height. Supplied with low resistance shower head and hose.

FLUID CATEGORY 5



Model DC257

DC Pipe Interrupter

Type DC Pipe Interrupter providing Fluid Category 5 backsiphonage prevention primarily for urinals - enabling flushing directly from the mains supply.

Sizes 15 mm compression outlet, DN20 female outlet for hose tap, DN20 male outlet, DN15 female outlet for lab tap

FLUID CATEGORY 5



Model DC257SOL

DC Filler - DC Pipe Interrupter Assembly

Type DC Pipe Interrupter assembly with Solenoid Filling Valve providing Fluid Category 5 backsiphonage protection primarily for swimming pool filling. Note - there must be no control valve or restriction downstream.

Sizes 20 & 25 MDPE outlet, 22 mm compression outlet

FLUID CATEGORY 5



Model BA3T

RPZ Valve Compact Backflow Preventer for Fluid Category 4.

Compact design with high flow performance. Normally supplied with servicing valves and fine strainer.

Sizes DN15 & DN20

FLUID CATEGORY 4



Model BA Options A-J

RPZ Valve Assemblies (BA)

Backflow Preventer for Fluid Category 4 protection supplied with servicing valves and fine strainer. Option F features large capacity strainer.

Sizes DN15 - 200

FLUID CATEGORY 4



Model BACAB2

RPZ Valve in small Cabinet

RPZ Valve (BA device) in 300 mm square cabinet. Complete package with internal servicing valves, serviceable strainer, flexible hoses with servicing valves.

Sizes 15 & 22 mm

FLUID CATEGORY 4



Model DB20IL15/DB20IL20

DB Pipe Interrupter

Type DB Pipe Interrupter backflow prevention device for fitting to external tap to provide Fluid Category 4 backsiphonage protection. Complete with interlock hose connector.

Size 3/4" female inlet

FLUID CATEGORY 4



Model CA297PRV

Filling Valve with CA Device

Filling valve assembly for filling and pressurising sealed house or non-house heating systems with an output of less than 45kW. CA device provides enhanced Fluid Category 3 protection.

Sizes 15 & 22mm

FLUID CATEGORY 3



Model ED132

Double Check Valve

Exceptionally low headloss Double Check Valve with DZR brass body. Flat-faced connectors allow reliable connection to many pipe systems - e.g. solder union.

Sizes 15 - 54 mm (15 & 22 mm Tectite)

FLUID CATEGORY 3



Backflow Prevention Products

Model AFS / AFP

"Autofill" Pressurisation Unit

New type of pressurisation unit that can legally fill and pressurise "non-house" sealed heating or chilled water systems. No filling loop required. High & low cut-out switches. Fluid Category 4.
Sizes 15 & 22 mm

FLUID CATEGORY 4



Model ED235/ED235WT

Double Check Valve

Chrome plated with female inlet and male outlet or male inlet and female outlet. Designed for shower hoses on bath mixer valves (no tools required) for Fluid Category 3 risks. Optional flow limiter (DN15 only).
Sizes DN15 & DN20

FLUID CATEGORY 3



Model ED316

Double Check Valve

Exceptionally low headloss Double Check Valve with 316 stainless body. Flat-faced connectors allow reliable connection to many pipe systems - e.g. Mapress press-fit.
Sizes DN20 - 32
 Manufactured to order

FLUID CATEGORY 3



Model ED440

Double Check Valve

Conventional Double Check Valve in DZR Brass with compression or female ends. (For low headloss applications use ED132).
Sizes 15 - 54 mm compression, DN15 - 50 female

FLUID CATEGORY 3



Model EC453

Double Check Valve - Flanged

Flanged (PN16) verifiable Double Check Valve with ductile iron body, epoxy coated. Stainless steel closing mechanism and four test cocks.
Sizes DN65 - 250

FLUID CATEGORY 3



Model EB235

Single Check Valve

Chrome plated with female inlet and male outlet or male inlet and female outlet. Primarily intended for backflow protection from flexible hoses - fitted between servicing valve (or tap) and hose (no tools required). Model EB20FM235 designed specifically for washing machine valves to prevent taste problems from hose.
Sizes DN15 & DN20

FLUID CATEGORY 2



Model EB420

Single Check Valve

DZR Single Check Valve with compression ends or female BSP. Fluid Category 2 protection - e.g. branches to steel pipes.
Sizes 15 - 28 mm compression, DN15 - 50 female

FLUID CATEGORY 2



Model EA453

Single Check Valve - Flanged

Flanged (PN16) verifiable Single Check Valve providing Fluid Category 2 protection - e.g. fire sprinklers and steel pipe branches. Ductile iron body, epoxy coated with stainless steel closing mechanism.
Sizes DN65 - 250

FLUID CATEGORY 2



Model NRV402

Non-Return Valve Flanged (PN10)

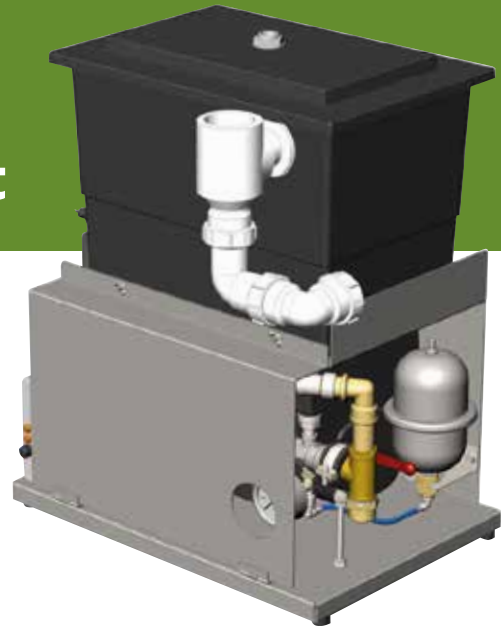
Non-Return Valve with cast iron body, epoxy coated for exceptional robustness.
Sizes DN50 - 150



WRAS Approved/compliant products. UK engineering

Booster Pump Sets

Arrow "Stealth" Booster – Compact Domestic Booster Set



→ Model BTSBBPV

Compact Domestic Booster Set

Ultra-compact Domestic Booster Set with integral Automatic Bypass Valve.

Designed to boost pressure for tall buildings where space is limited and mains supply is inadequate.

Supplied on a stainless base - able to be installed in a kitchen cupboard. 0.8 Lt/s output, 3.0 bar.

→ Model BTAF 700 / 900 / 1200

"Pent-A-Boost" – Fixed Speed Compact Domestic Booster Set

Compact booster set requiring minimal installation space e.g. kitchen cupboards and stairwells. For domestic (wholesome water) boosting. 2 - 5 bar, fast filling cistern, size (m) 0.7h x 0.57w x 0.5d, 1.2 Lt/s output.

FLUID CATEGORY 4



→ Model BPE LC1 / LC2 3-5 / 3-7 / 3-10 / 5-4 / 5-8 / 5-10 / 5-16

Booster Set

Inverter controlled pump on stainless base plate with 24 litre vessel and controls. BPELC1 supplied with electrodes for low level cut-out. BPELC2 has additional electrodes for controlling filling solenoid. Separate cistern and low level protection required. Dual pump range also available.



→ Model BTAF 3-5 / 3-7 / 3-10 / 5-4 / 5-8 / 5-10 / 5-16

"Pent-A-Boost" – Variable Speed Compact Domestic Booster Set

Similar to the above but with variable speed inverter pump and a very fast filling cistern. BMS outputs. Pump duties up to a remarkable 2.0 Lt/s output.

FLUID CATEGORY 4



→ Model BPE LC1 / LC2 3-5S / 3-7S / 3-10S / 5-4S / 5-8S / 3-5A / 3-7A / 3-10A / 5-4A / 5-8A

Booster Set – Variable Speed Dual Pump – Duty Standby or Duty Assist

Inverter controlled pumps on stainless base plate with 24 litre vessel and controls. Duty standby – one pump runs at a time or duty assist – allows second pump to switch on doubling output.



→ Model BTAF 3-7S / 3-10S / 5-4S / 5-8S / 3-5A / 3-7A / 3-10A

"Pent-A-Boost" – Variable Speed Dual Pump – Duty Standby or Duty Assist Compact Domestic Booster Set

Duty Standby – one pump runs at a time or Duty Assist – allows the second pump to switch on as required – doubling output. Up to 2.4 Lt/s output.

FLUID CATEGORY 4



→ Model BTAF 5-8A

"Pent-A-Boost" – Variable Speed Dual Pump – Duty Assist

Remarkably high duty (up to 3.7 Lt/s) whilst occupying a similar footprint to original units, ideal for installing in locations where floor space is of a premium – often the case in domestic premises. The skid mounted base occupies less than 0.5 m² and allows the unit to be easily and securely transported. The integral 100 litre GRP Break Tank is rapidly filled via a triple solenoid valve arrangement.

FLUID CATEGORY 4



Pressure Regulating

Model PRV535

Pressure Reducing Valve

PRV with dial up pressure setting. Adjustable outlet pressure 1 - 6 bar (factory set at 3 bar). Gauge supplied. Solder unions and servicing valves optional. Sizes DN15 - 50



Model PRV536

Pressure Reducing Valve

PRV with DZR brass body and stainless steel seat. Adjustable outlet pressure 0.5 - 6 bar (factory set at 3 bar). Gauge supplied. Solder unions and servicing valves optional (as illustrated). Sizes DN15 - 65



Model PRV1310 / PRV1320

Pressure Reducing Valve

PRV with gunmetal body and stainless steel seat. Adjustable outlet pressure 2 - 6 bar (model 1310). Low headloss, gauge supplied. Solder unions and servicing valves optional (as illustrated). Sizes DN15 - 65



Model PRVC101

Pressure Reducing Valve

Flanged (PN16), pilot operated PRV. Very low headloss due to large main orifice. Solenoid optional. Adjustable between 1.72 - 8.5 bar. Two gauges supplied. Sizes DN50 - 200



Water Saving / Flow Limiting & Monitoring

Model AFL

Automatic Flow Limiting Servicing Valves

Servicing valve with facility for flow limiting cartridge, which according to colour-coded selection automatically limits the flow of hot or cold water. Cartridge can be inserted after installation. No need to drain. Prevents splashing and saves water - especially important for self closing taps. Qualifies for Enhanced Capital Allowance (4 lt/min and 6 lt/min only). Sizes 15 & 22 mm, DN15 & 20



Model AFLPF

As AFL with push-fit connections facilitating installation and orientation.



Model AFLC 0.07 - 0.43 Lt/s

Automatic Flow Limiting Cartridges

Range of colour-coded Automatic Flow Limiting Cartridges for installation into AFL Valve. Provide constant maximum flow rate irrespective of supply pressure within range 1 - 10 bar. No need to drain. Also strainer cartridges. Cartridge common to all sizes of AFL valve.



Model AFLE

"Equi-Flow" Automatic Flow Limiter for Shower Hose

Chrome plated flow limiter suitable for all standard shower hoses. Fits to inlet of hose and ensures even network distribution. No tools required. Flow rate 0.07, 0.1, 0.13 & 0.17 Lt/s. Size DN15



- High Stock
- Fast Turnaround

Heating Products

Model MFD

FLUID CATEGORY 5

"Midi-Fill"® Digital - Pressurisation Unit

Pressurisation unit that can legally fill and pressurise "non-house" heating and chilled water systems. Self test monitoring system alerting of pressurisation fault before heating system is shut down. Electronic water meter with monthly excessive filling warning. Digital display and controls. No annual testing. Fluid category 5. Sizes 15 & 22 mm



Model AFS / AFP

FLUID CATEGORY 4

"Autofill"® Pressurisation Unit

New type of pressurisation unit that can legally fill and pressurise "non-house" sealed heating or chilled water systems. No filling loop required. High & low cut-out switches. Fluid Category 4. Sizes 15 & 22 mm



Model AFCA

FLUID CATEGORY 3

"Autofill"® Pressurisation Unit

New type of pressurisation unit for filling unvented domestic heating systems or non-house systems risk assessed to be Fluid Category 3. Size 15mm



Model DP

Dosing Pot

For adding inhibitors to sealed heating systems. Supplied with five Ball Valves, safety Non Return Valve and filling funnel. DN15 primary valves. Sizes 5 & 10 litre standard, others available



Model EVCP

Expansion Vessel for Heating

Range of Expansion Vessels for accommodating the thermal expansion of sealed heating systems. Rated at 6 bar (80+ Lt) and approved for primary circuit unvented heating applications. Sizes 4 - 700 litres



Model ADR

Air & Dirt Remover

Air and dirt eliminator with automatic air vent for heating systems. Rated at 10 bar, 120°C. Sizes 3/4" - 2" female BSP, 22 mm compression, DN50 - 150 PN16



Dose & Fill® ... More than just a dosing pot

Model DF

Dose & Fill - Pressurisation & Dosing Unit

New and revolutionary automatic filling and dosing unit. The top section features a "Midi-Fill" Digital Pressurisation Unit, whilst below is a dosing unit for adding inhibitor to a heating systems.

The dosing pump automatically adds chemical from the internal container according to the concentration set on the digital display.

Manual dosing facility removes need for dosing pot.

A correctly dosed system can save thousands of pounds of repairs.



Standpipes & Taps

“Conceal-A-Tap®”

Model HUC

Concealed Hose Union Tap

Telescopic Hose Union Tap, which is recessed into any thickness of wall and therefore within the thermal envelope of a building. Flush when closed minimising risk of injury, extends using special key. Tamperproof, frost resistant and discreet. Ideal for schools and public buildings. Optional installation kit

Size 15 mm



Hose Union Tap Box

Model HUTB/HUTBS/HUTBT

Hose Union Tap Box

An economical tamperproof and frost resistant Hose Tap housed in a secure polished stainless steel box. Model HUTB is rear entry, whilst HUTBS is for an external surface supply pipe. Model HUTBT is top entry. Optional padlock and hose shield (HUSHIELD).

Sizes 15 & 22 mm (HUTB only)



Also available with “Tap Guard” secure pipe cover Model HUTG

Model HUD

“Detach-A-Tap” – Removable Hose Union Tap

Removable wall mounted hose union tap with connection for universal garden components. A push-fit connection allows the tap outlet fitting to be removed when not in use, preventing any possible waste or misuse. Available rear entry using the HUD Wall Mounting Plate, or top or surface entry using the HUD Wall Plate Elbow.



Model SPHUD

FLUID CATEGORY 3

Pillar Standpipe Assembly

Tamperproof and inconspicuous Standpipe enclosure with removable Hose Union Tap for a hose pipe where the risk is Fluid Category 3. When closed, the Standpipe resembles a Pillar with all internal components including the tap outlet concealed.

Tap Size 15mm

Sizes 20 & 25 MDPE, 22mm Comp inlet



Model SPBA

FLUID CATEGORY 4

Standpipe – Commercial use

Tamperproof Standpipe with Hose Union outlet for commercial areas. Houses BA device for Fluid Category 4 protection. Quick drain facility and MDPE inlet.

Tap Sizes DN15 & 20

Sizes 20, 25 & 32 MDPE inlet



Model SPED

FLUID CATEGORY 3

Standpipe

Tamperproof Standpipe with Hose Union outlet for low risk applications. Double Check Valve (ED132) provides Fluid Category 3 protection. MDPE inlet.

Tap Sizes DN15 & 20

Sizes 20, 25 & 32 MDPE inlet
15 & 22 mm compression inlet

Model SPTG/SPTG2

FLUID CATEGORY 3

Standpipe – Flange Mounting

Low level tamperproof Standpipe designed to be bolted to a horizontal hard surface – such as flat roofs. Double Tap Guard Standpipe (SPTG2) with double outlet and two spherical type angled valves. Polished stainless steel enclosure. Incorporates a servicing valve and Double Check Valve for Fluid Category 3 protection.

Tap size DN15

Sizes 20 (SPTG only) & 25 MDPE

22 mm compression inlet (SPTG only)



Model SPWP

FLUID CATEGORY 3

“WaterPoint” – Standpipe with Bucket Shelf

Tamperproof Standpipe with Hose Union outlet. Double Check Valve (ED132) provides Fluid Category 3 protection. Bucket shelf provides rest for water vessels (e.g. buckets and watering cans) during filling. Bucket shelf retracts into top cap when closed minimising risk of injury.

Tap sizes DN15 & 20

Sizes 20 & 25 MDPE inlet

15 & 22 mm compression inlet

Also available with self-closing tap in place of Hose Union outlet (SPWPSC).



Model HUBG

Hose Union Tap Below Ground

Inconspicuous Hose Union Tap for use where a Standpipe is unsuitable. Telescopic and tilting enclosure enables the lockable lid to be flush with the ground surface. To be supplied via Break Tank e.g. “Boost-A-Break”.

Tap sizes DN15 & 20

Sizes 20, 25 & 32 MDPE



Model SPTB

FLUID CATEGORY 3

Standpipe – Miniature – Ground Mounting

Miniature tamperproof Standpipe. Polished stainless steel enclosure, spherical type angled valve and Hose connector. Incorporates a servicing valve and Double Check Valve for Fluid Category 3 protection. Only 250 mm high.

Tap size DN15

Sizes 20 & 25 MDPE inlet

22 mm compression inlet



Isolating

Model BPV

Bypass Valve Assembly

Automatic Bypass Valve assembly with four connections for "Pent-A-Boost" pump sets. Allows water (at mains pressure) to bypass the pump. Low loss Double Check Valve and no dead leg.

Sizes 22 - 54 mm compression, Yorkshire Tectite 22 & 28 mm, DN20 - 50 female Mixed connection sizes, including MDPE available



Model AWS20FM

Automatic Waterstop Valve

With chrome plated brass body, designed to protect domestic appliances from causing major leaks due to a ruptured hose. The device automatically shuts off the water supply to the appliance when it detects an excess flow of at least 0.3 litres per second. Suitable for use with washing machines, dishwashers and plumbed fridge freezers.

Sizes 22 mm, DN20



Model FB

Ball Valve with integral Strainer

Quarter turn isolating Ball Valve with removable strainer inside ball, enabling strainer to be removed in-situ without additional valves. Various coarseness of strainer available.

Sizes DN15 - 50



Model BRV

Branch Valve

Servicing valve and low head-loss Double Check Valve as required by the Water Regulations per floor. Solder unions facilitate installation and provide reliable joint.

Sizes 15 - 54 mm



Temperature Control

Model TMV5211

Thermostatic Mixing Valve (TMV)

Low headloss TMV for point of use blending. Normally supplied with AFL servicing valves (incorporating serviceable strainer). Tails have a Single Check Valve.

Outlet adjustable 30 - 50°C.

Sizes 15 & 22 mm



Model TMV5230

Thermostatic Mixing Valve (TMV)

Large TMV for group mixing. Normally supplied with Filterball servicing valves (incorporating serviceable strainer). Tails have a Single Check Valve.

Sizes 28 & 35 mm, DN25 & DN32



Model TMV5213

Thermostatic Mixing Valve (TMV3)

TMV3 for vulnerable users - healthcare. Tails have a Single Check Valve.

Sizes 15 & 22 mm



Model TMV5213AFL

Thermostatic Mixing Valve (TMV3) c/w AFL Servicing Valves

TMV3 for vulnerable users - healthcare. Supplied with two AFL servicing valves (incorporating serviceable strainer). Tails have a Single Check Valve.

Sizes 15 & 22 mm



For information on our complete range of various TMV Kits please call: **01442 823 123** or send us an email to: enquiries@arrowvalves.co.uk



Get in touch and enjoy our quick
24 hour quote turnaround and
90 day price lockdown!



Expert Advice

Our UK Water Regulations Qualified Team



Alex Ewers
Production
Supervisor



Amanda Sherrock
Office
Manager



David Miller
Service
Engineer



Jemma Jones
Senior Accounts
Administrator



Karen Sheehy
Sales and Credit
Coordinator



Louise Glover
Accounts
Assistant



Matthew Henley
Production
Assembler



Nathan Page
Production
Assembler



Paul Robinson
Production
Assistant



Richard Medicott
Quality and
Technical Manager



Richard Shepherd
Production
Assembler



Shadene Foster
Administrator



Sophie Holdrick
Marketing
Coordinator

What you can expect from us...

As a valued customer of ours you can expect the following from our team -

- ➔ If we offer you a solution it will be because it is the right one for you
- ➔ Going the extra mile to respond to you promptly because we understand that speed is a measure of respect
- ➔ We always do what we say
- ➔ Continual improvement of our products and procedures to exceed your expectations
- ➔ Relevant and helpful information relating to the Water Regulations
- ➔ Our commitment continues after fulfilment of your order backed up by a 5 year warranty
- ➔ We commit to keeping business fun and friendly



**Many other standard and special products
available – please enquire:**

T: 01442 823123

E: enquiries@arrowvalves.co.uk

F: 01442 823234

www.arrowvalves.co.uk

Arrow Valves Ltd
York House
Northbridge Road
Berkhamsted
Hertfordshire
HP4 1TA



Manufacturers and distributors of special commercial
heating and plumbing fittings

Products Water Regulations approved – KIWA UK or WRAS

See individual datasheets for technical information

For Water Regulations advice, the latest datasheets,
specification clauses and more go to www.arrowvalves.co.uk

© Arrow Valves Ltd 2018

Arrow Valves Ltd reserve the right to change specifications,
design and materials at any time without notice

All unitless dimensions is mm