

## GLOBAL SERVICE

Norbar is the only torque equipment manufacturer capable of offering tool and instrument calibration services to the original factory standard on four continents.

Accredited laboratories in Australia, USA, Singapore, China and India operate the same equipment and procedures as the UKAS accredited laboratory within our headquarters in the UK.



**NORBAR TORQUE TOOLS LTD**  
Wildmere Road, Banbury, Oxfordshire, OX16 3JU  
UNITED KINGDOM  
Tel + 44 (0)1295 753600  
Email sales@norbar.com



**NORBAR TORQUE TOOLS**  
45-47 Raglan Avenue, Edwardstown  
SA 5039  
AUSTRALIA  
Tel + 61 (0)8 8292 9777  
Email enquiry@norbar.com.au



**NORBAR TORQUE TOOLS INC**  
36400 Biltmore Place, Willoughby  
Ohio 44094  
USA  
Tel + 1 866 667 2272  
Email inquiry@norbar.us



**NORBAR TORQUE TOOLS PTE LTD**  
194 Pandan Loop, #07-20 Pantech Business Hub  
SINGAPORE 128383  
Tel + 65 6841 1371  
Email enquires@norbar.sg



**NORBAR TORQUE TOOLS (SHANGHAI) LTD**  
E Building- 5F, No. 1618 Yishan Road  
Minhang District, Shanghai  
CHINA 201103  
Tel + 86 21 6145 0368  
Email sales@norbar.com.cn



**NORBAR TORQUE TOOLS INDIA PVT. LTD**  
Plot No A – 168 Khairne Industrial Area  
Thane Belapur Road  
Mahape Navi Mumbai – 400 709  
INDIA  
Tel + 91 22 2778 8480  
Email enquiry@norbar.in

## NORBAR PRODUCT PORTFOLIO



Torque Screwdrivers



Torque Wrenches



Electronic Torque Wrenches



Manual Torque Multipliers



Pneumatic Torque Multipliers



Electronic Torque Multipliers



Torque Measurement Instruments



Torque Transducers



Ultrasonic Bolt Measurement



Calibration Services

# NEW



## NORTORQUE®

EFFICIENT, AFFORDABLE, PROFESSIONAL QUALITY



Distributed by

[www.norbar.com](http://www.norbar.com)



# THE NORBAR NORTORQUE® TORQUE WRENCH

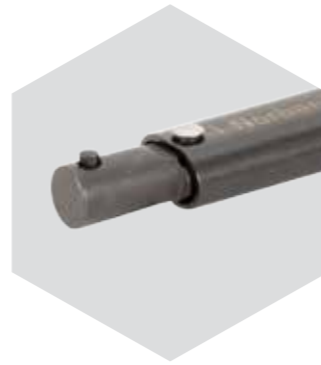
THE NORTORQUE® UTILISES NORBAR'S PROVEN MECHANISM AND INTERNAL COMPONENTS AND INCORPORATES THEM INTO A PURPOSEFUL AND ATTRACTIVE TORQUE WRENCH THAT WILL DELIGHT A WIDE RANGE OF USERS FROM PROFESSIONAL MECHANICS TO HOBBY ENTHUSIASTS

In developing NorTorque®, Norbar's objective was to deliver outstanding quality and performance in a value for money package. The wrench offers a comfortable, robust single material handle which also contains an easy to set scale. Fine engineering ensures that the wrench adjustment is both fast and fingertip light meaning that you can do your job more efficiently. The sleek body tube finish was chosen for its robustness and minimal process impact on the environment.

## ADJUSTABLE, DUAL SCALE TORQUE HANDLES

Part Number	Model Name	Torque Range		End Fitting	Length (mm)	Weight (kg)
		N·m	lbf·ft			
130141	NorTorque® 60	12 - 60	10 - 45	16mm Spigot	323	0.60
130142	NorTorque® 100	20 - 100	15 - 75	16mm Spigot	357	0.66
130143	NorTorque® 200	40 -200	30 - 150	16mm Spigot	440	0.78
130144	NorTorque® 300	60 - 300	45 -220	16mm Spigot	566	1.13

Torque handles with single scale in N·m only also available



## MICROMETER SCALE

Secondary scale applies to the primary torque units (N·m on a dual scale wrench) for simple and error free setting

## RAPID ADJUSTMENT

Just eight turns to cover the entire scale

## NEW HANGER

Convenient hanger feature for tool storage also aids wrench unlocking and adjustment

## ROBUST

Push through ratchets with a narrow engagement angle of 5° (models up to 200 N·m) for working in tight spaces

## ADJUSTABLE, DUAL SCALE RATCHET TORQUE WRENCHES

Part Number	Model Name	Torque Range		Square Drive	Length (mm)	Ratchet Diameter (mm)	Tool Weight (kg)	Ratchet Teeth
		N·m	lbf·ft					
130101	NorTorque® 60	12- 60	10- 45	3/8"	328	35	0.7	72
130103	NorTorque® 100	20- 100	15- 75	1/2"	375	42	0.8	72
130104	NorTorque® 200	40- 200	30- 150	1/2"	459	42	1.0	72
130105	NorTorque® 300	60- 300	45- 220	1/2"	588	49	1.4	60
130106	NorTorque® 340	60 - 340	50- 250	1/2"	679	49	1.55	60

NorTorque® 60 comes with a 1/2" square drive adaptor

NorTorque® 100 comes with a 3/8" square drive adaptor

## ADJUSTABLE, N·m ONLY RATCHET TORQUE WRENCHES

Part Number	Model Name	Torque Range (N·m)	Square Drive	Length (mm)	Ratchet Diameter (mm)	Tool Weight (kg)	Ratchet Teeth
130111	NorTorque® 60	12- 60	3/8"	328	35	0.7	72
130113	NorTorque® 100	20 - 100	1/2"	375	42	0.8	72
130114	NorTorque® 200	40 - 200	1/2"	459	42	1.0	72
130115	NorTorque® 300	60 - 300	1/2"	588	49	1.4	60
130116	NorTorque® 340	60 - 340	1/2"	679	49	1.55	60

NorTorque® 60 comes with a 1/2" square drive adaptor

NorTorque® 100 comes with a 3/8" square drive adaptor

