

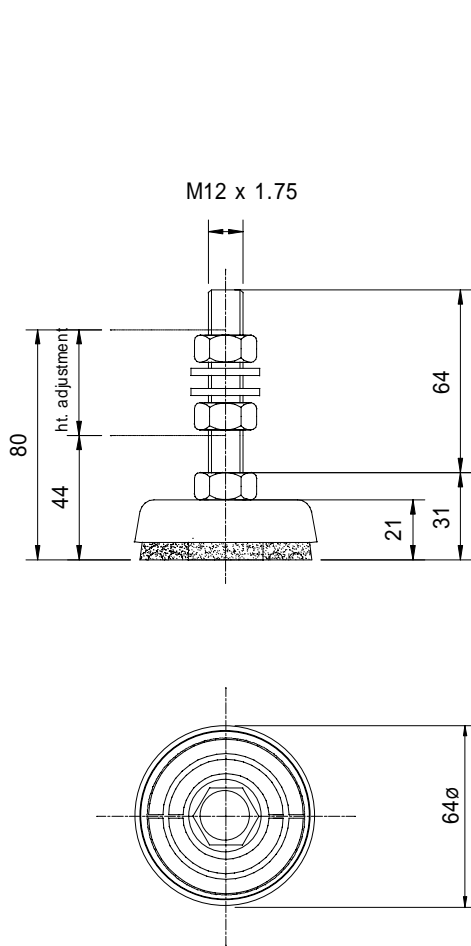
Technical data

Lightweight machinery mountings
223 series and 264 series

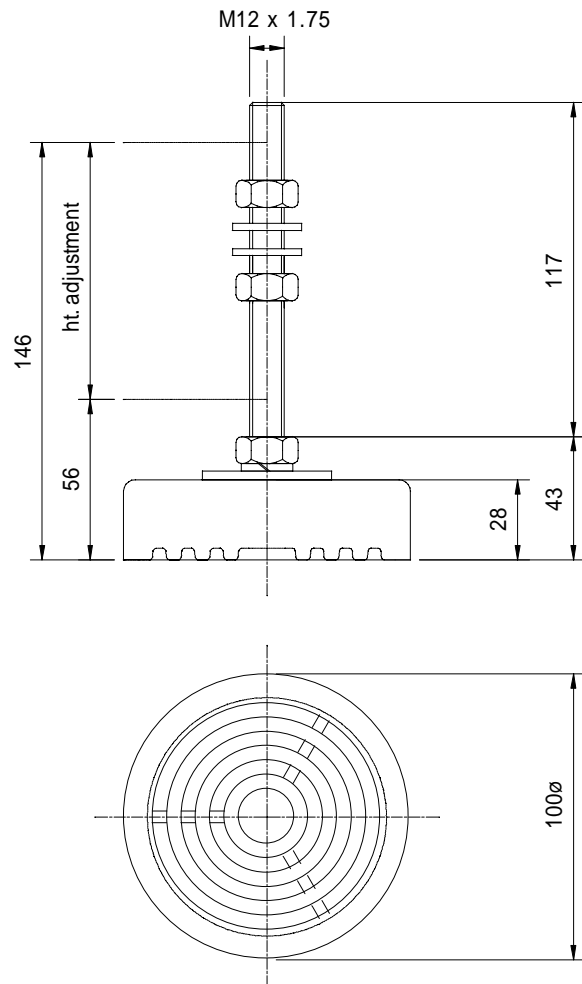


The 223 and 264 series mountings are designed to isolate vibration from lightweight workshop machinery, such as lathes, punches, grinding machines machine tools, vacuum equipment and ancilliary plant. They are easy to install and both ranges have a facility for height adjustment to allow levelling of the equipment. The rubber base of the foot locates the machine by friction and prevents it from travelling across the floor. Both ranges are manufactured in oil resistant rubber.

Note: The 223 and 264 series mountings are designed for industrial applications only. The rubber element may cause staining on decorative floorings. Advice for specific applications can be obtained from our technical department.



223 series



264 series

