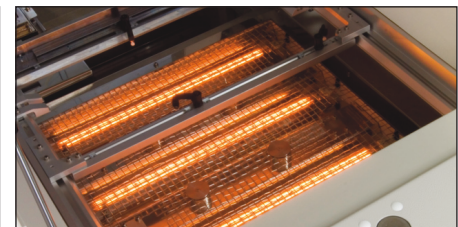
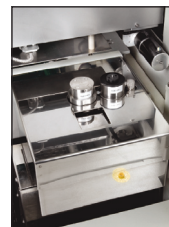
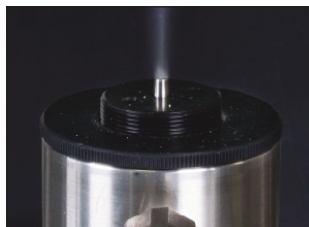
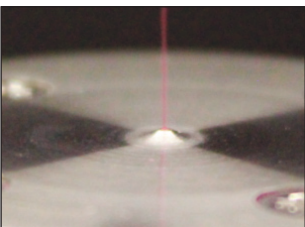


SYNCHRODEX COMBO

In-line or standalone fluxer/pre-heater

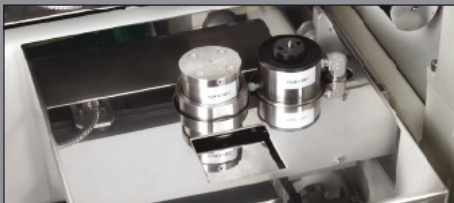


Pillarhouse
INTERNATIONAL



SYNCHRODEX COMBO

In-line or standalone fluxer/pre-heater



This compact, modular, in-line system utilises the same design concept as the new generation Synchrondex soldering cell, and offers the user significantly reduced process time when compared to using a single soldering unit with on-board fluxing and pre-heat functions. It also provides a reduced footprint and cost savings over the conventional three module, fluxing, pre-heat and selective soldering work cell.

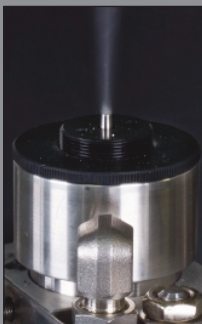
The fluxer/pre-heat combo operates in tandem with the selective soldering unit and can be configured with either Drop-Jet or ultrasonic flux heads and both top and bottom side IR pre-heat functions. Twin pitch flux heads are available for further cycle time reductions.

The machine utilises an XY positioning system to position the flux head as required. A Drop-Jet flux head is supplied as standard with an ultrasonic head being ordered as an alternative or in addition to the standard head. Both systems provide precise control of the flux being deposited on the board.

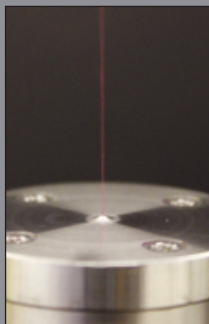
Programming and control of the machine is facilitated via a PC using the Windows® based PillarCOMMx software. Programs and machine configuration are protected by a customer selectable, multilevel password security system.

The machine is freely programmable to cater to different board layouts. Each flux joint is separately programmable to its own set of required parameters. The programming system employs a component data library enabling quantities of similar joints to use the same fluxing data outline.

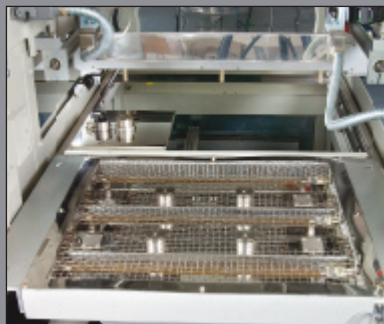
Visually assisted self-teach alignment allows for fast and accurate board programming.



ULTRASONIC
FLUX HEAD



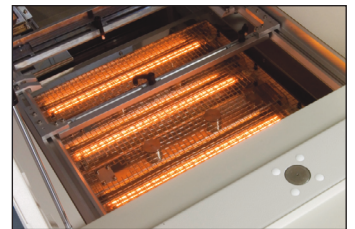
DROP-JET
FLUX HEAD



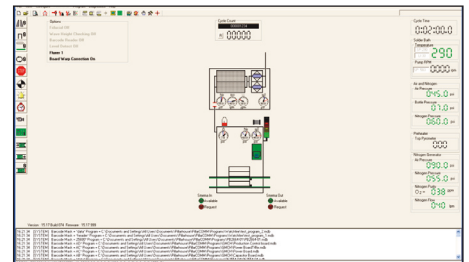
BOTTOM SIDE SLIDE IN/OUT
IR PRE-HEAT



Pillarhouse
INTERNATIONAL



SLIDE IN/OUT BOTTOM SIDE
IR PRE-HEAT



OPERATION

The Synchrondex Combo is controlled by a PC through PillarCOMMx, a Windows® based 'Point & Click' interface with PCB image display, as illustrated above.

Additionally, our PillarPAD offline package allows the operator to produce programs independently from the machine using Gerber data.



TWIN INDEPENDENT FLUX
BOTTLE ASSEMBLY



Pillarhouse
INTERNATIONAL

STANDARD FEATURES

- In-Line Motor Driven Auto Width Adjust Throughfeed Synchronous Movement Conveyor
- Conveyor Side Clamping
- Integral PC & Machine Mounted TFT Monitor
- Drop-Jet Fluxer
- Internal Fume Extraction
- Colour Programming Camera
- Windows® based PillarCOMM 'Point & Click' interface
- Light Stack Tower
- Flux Level Sensor
- SMEMA Compatible
- Multilevel Password Protection
- Day-To-Day Service Kit

MONITORING OPTIONS

- Flux Presence Sensor - Thermistor Style
- Flux Spray and/or Flow

OPTIONS

- Ultrasonic Fluxing
- Dual Drop-Jet/Ultrasonic Fluxing
- Top Side Instant IR Pre-Heat
- Closed-Loop Pyrometer Temperature Control
- Encoders on X, Y and Z Axis



FLUX/PRE-HEAT COMBO WITH
SYNCHRODEX SOLDERING MODULE



ADDITIONAL SYSTEM OPTION - PillarCARE
Pillarhouse's comprehensive after-sale
service and process programme, available
for all machines



Pillarhouse... Expect innovation
www.pillarhouse.co.uk

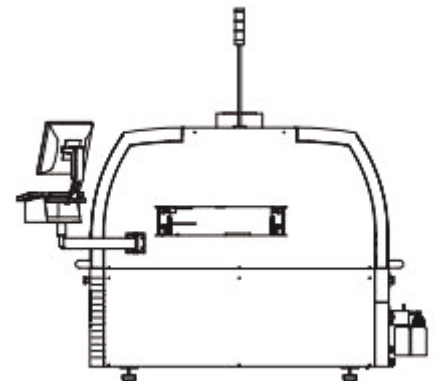
SYNCHRODEX COMBO



Pillarhouse
INTERNATIONAL

SPECIFICATIONS

Height:	1615mm / 63" - excluding light stack
Width:	813mm / 32"
Depth:	2024mm / 80"
Board size:	Max. - 457mm x 610mm / 18"x 24" Min. - 102mm x 102mm / 4"x 4"
Edge clearance:	Above / below 3mm
Height clearance:	Below 40mm - above 45mm 100mm - upon request
Extraction:	Fan: 276mm dia.
Rating:	1000m ³ /hr / 589 CFM
Flux:	Low maintenance Drop-Jet system. Low solids, no clean flux, pressurised and inerted system, optional water-soluble system available.
Flux tank capacity:	1 litre
Fluxer speed:	50 dots/second
Deposition size:	4.0-6.0mm / 0.16-0.24"
X, Y & Z axis resolution:	0.15mm
Repeatability:	+/- 0.05mm.
Nitrogen supply pressure:	5 bar / 72 psi
Nitrogen usage:	10-30 litres/min.
Air Supply Pressure:	5 bar / 72 psi
Air Usage:	10 litres/min. / 0.35CFM
Power Supplies:	Single-phase + PE.
Voltage:	230V
Frequency:	50/60 Hz.
Power:	13kVA max. - machine configuration dependent
Transport:	Conveyor
Programming:	PillarCOMM Windows® based 'Point & Click' interface



Pillarhouse International Ltd.

Rodney Way, Widford, Chelmsford, Essex CM1 3BY UK

Pillarhouse USA, Inc.

201 Lively Blvd, Elk Grove Village, IL 60007 USA

Pillarhouse (Suzhou) Soldering Systems Co., Ltd.

105 Weixi Road, Suzhou Industrial Park, China 215127

www.pillarhouse.co.uk

Tel: +44 (0) 1245 491333 Email: sales@pillarhouse.co.uk

www.pillarhouseusa.com

Tel: +1 847 593 9080 Email: sales@pillarhouseusa.com

www.pillarhouse.cn

Tel: +86 512 6586 0460 Email: sales@pillarhouse.cn