A long, modern moving walkway in a shopping mall. The walkway is made of metal grating and has glass railings on both sides. In the background, a woman in a white top and a man in a dark jacket are walking on the walkway. The ceiling is white with recessed lighting. The overall scene is bright and clean.

**Safely moving thousands
of people a day.
Without fuss.**

**Find out what our
escalators & moving walkways
can do for you.**

Stannah

Contents

- 4 Stannah customer support
- 6 A2 escalator range
- 8 A2 finishes and options
- 10 A2 engineering data
- 12 ST moving walkway range
- 14 ST finishes and options
- 16 ST engineering data
- 18 New bespoke installations
- 19 Removals
- 20 Maintenance and repairs
- 24 Refurbishment
- 26 Stannah – a family of lift expertise



“Our beautiful 73,000 sq.ft Ipswich showroom is laid out over a ground floor and a mezzanine. We wanted to find a stylish and practical way to encourage customers to visit the whole store, to access other departments and stop off at our table-service restaurant. Stannah’s escalator is both attractive and practical.”

Andrea Johnston, General Manager of Glasswells

What can our escalators & moving walkways do for you?

Features and benefits:

Smooth and quiet ride – designed on the principles of minimal friction, vibration and noise, Stannah escalators and moving walkways offer not only a superbly smooth and quiet ride, but also enjoy minimal wear and fatigue, high efficiency and offer exceptional durability and minimal maintenance requirements. Features include:

- Low vibration and low noise motor and gear drive
- Acoustically treated one piece die-cast aluminium steps/pallets
- Robust truss structure
- Rigid and precision guide rails

Energy efficiency – in addition to the standard efficient worm gear drive, numerous options are available to enhance the energy efficiency:

- High efficiency helical gear drive
- Motor energy control
- VVVF control
- Auto start/stop control

Advance control system – our products include an advanced ADV microprocessor control system designed specifically for escalator and moving walkway application. The ADV control system closely monitors and controls operation with the following control capability:

- Dot matrix LCD or LED display
- MP3 voice announcement
- Automatic start/stop control with passenger detection and time schedule operation
- RS485 communication link for interface to BMS or remote

All equipment fulfils the safety requirements of the EC Directive, carries the CE Mark and complies with BS EN 115-1:2008+A1:2010. Stannah is Quality Assured to ISO9001:2000 accredited. This guarantees you are dealing with a reputable company. Our escalators and moving walkways are manufactured using the highest quality materials and components to the most exacting standards.

Stannah escalators and moving walkways move lots of people safely, quietly and efficiently in and around a wide variety of buildings. We are beside you through your project and happily liaise with architects, contractors, clients and consulting engineers on your behalf. Our nationwide network of service branches and outstanding engineers means your installation is completed on time and within budget.

22,500

miles a month

42,000

journeys a week

52

weeks of the year

7

days a week

From consultation to completion – outstanding customer support from Stannah

From delivery through installation to completion, we are on site to ensure your project is completed on time and within budget, with meticulous attention to health and safety procedures reflected in our award of OHSAS 18001.

Our dedicated escalators and moving walkways team will become part of your team for the duration of your project. We will liaise with clients, developers, contractors, architects and consultants to ensure your installation is completed on time and within budget. Manufactured to your precise specifications, your unit/s will, in most cases, be delivered in just two or three sections to be assembled on site by our highly trained Stannah engineers.

For example, when five Stannah moving walkways were installed in a new supermarket superstore in Hampshire we became part of a

team of subcontractors who collaborated with main contractor, Dawnus Construction, to ensure the project went as smoothly as possible.

The build required three moving walkways to take shoppers from the car park to the first floor retail area. Two further units would provide access to an additional mezzanine shopping level. All walkways needed to carry shoppers and their shopping trolleys quickly and safely around the store.

The delivery of the first units on site marked a key point in the development. Each section of the two first floor walkways was carefully



Our dedicated escalator and moving walkway team will become part of your team for the duration of your project.



lifted and 'posted' through a purpose-built opening at retail level to be assembled alongside its permanent position. The process was repeated for the three remaining walkways but this time the assembly took place on the ground-floor car park level where the units were to provide fast access to the first retail floor.

Once assembled the units were fixed into place and wrapped to protect them from dust and dirt in a construction zone. The build construction and interior fit out went on around the units until it was time for the Stannah engineers to get

back on site and continue with the installation process. Each walkway is finished in brushed stainless steel and clear glass with matt black balustrades.

All five walkways contribute to an integrated vertical transport system that enhances the shopping experience and day-to-day store operation. Once the finishing work was completed around the lift an extensive testing period set in to ensure all the walkways would perform at optimum levels.

Stannah has a nationwide network of service branches providing local service for our own and other manufacturers' equipment. Highly trained Stannah engineers are available 24/7, 365 days a year.

“We built a good rapport with the construction company, Dawnus, helping ensure all five walkways were installed on schedule.”

Kevin Bell, Technical Manager, Stannah Lift Services





“Access to the JD Sports store was easy – we were able to install the escalators in one piece and handed over a fortnight ahead of schedule.”

David Saunders, Department Manager,
Stannah Escalators & Moving Walkways



A2 escalator range

The A2 family of escalators is designed and manufactured to cover all commercial, industrial and public transport applications. There's a wealth of finishes and materials available for each type. So every A2 escalator can be provided to fit perfectly within its environment.

A2C escalators

The A2C range of escalators offers a comprehensive choice of tread widths and unit widths and lengths. Each unit is finished with a glass balustrade, natural anodised aluminium handrail guide frame with optional lighting.

A2S escalators

The A2S range of escalators offers a wide range of options, including tread widths and unit widths and lengths. Each unit is finished with glass panel balustrades with extra slim handrail guide frames. This range is ideally suited to elegant environments such as shopping centres and commercial buildings.

A2T escalators

The A2T range of escalators offers options for tread widths, unit widths and lengths. Each unit is robust and finished with stainless steel panel balustrades. This model is ideally suited to demanding environments such as public transport systems.

4

step widths to choose from

9,000

millimetres maximum rise

25,885

millimetres maximum length



A2C



A2S



A2T



**Glass panel balustrade,
with extra slim handrail
guide frame, the A2S
perfectly matches elegant
environments such as
shopping malls and
commercial buildings.**

!
Escalator safety
Always follow the directions
of the sign.
A. Stand on the steps.
B. Hold onto the handrail.
C. Do not lean against the handrail.
D. Do not use the handrail as a support.
E. Do not use the handrail as a support.
F. Do not use the handrail as a support.

Finishes & options

Stannah escalators are supplied with finishes to complement the environment they serve. Choose between glass or steel balustrades. Create an individual look with a wide range of handrail colours and finishes.

Part	Standard material and finish	Options available
Step	Silver painted die-cast aluminium alloy, yellow synthetic resin demarcation line	Black painted grooves
Comb	Natural colour aluminium alloy	Yellow powder coated
Landing plate	Stainless steel with black etched grooves	Aluminium alloy with black grooves
		Stainless steel with customised etched pattern and logo
Skirting	Hairline stainless steel	Black or clear anti-friction coating
Decking	Hairline finished stainless steel	Choice of various combinations of stainless steel or brass with coloured, hairline or mirror finish
Cladding		Choice of various materials and finish e.g. stainless steel, glass, marble etc.
Balustrade panel	Clear, 10mm tempered safety glass	Choice of 4 other standard colours
Handrail	Black, synthetic rubber, continuous vulcanised, with steel cord reinforcement and nylon cord gliding surface	Choice of 11 other standard colours

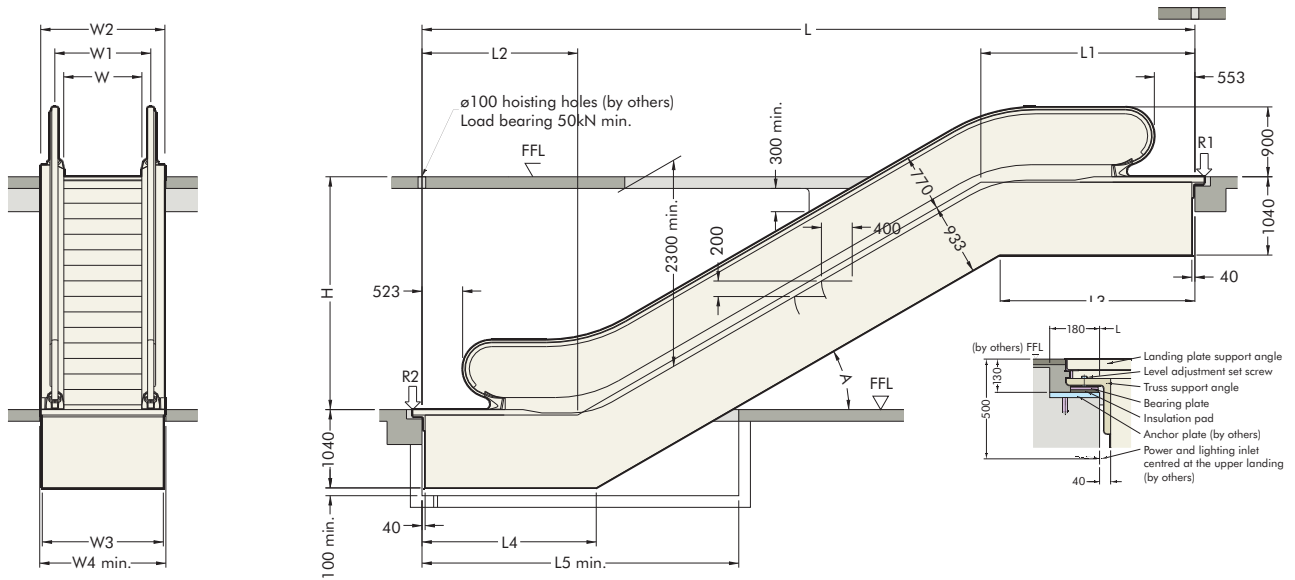


Our materials and finishes allow for the creation of bespoke solutions. We are here to help you achieve your vision.

Engineering data

The A2 family of escalators offers a wide range of tread sizes, inclines, widths and lengths. Every unit is quality engineered and finished to the highest specifications. Our products all carry a wealth of safety features as standard. Passenger safety is our first priority.

A2C & A2S



W	Model	A2C-30D	A2C-30T	A2C-35D	A2C-35T
1000	Weight (kN)	0.008H + 46	0.008H + 50	0.007H + 46	0.007H + 50
	R1 (kN)*2	0.0083H + 39	0.0083H + 43	0.0071H + 39	0.0071H + 43
	R2 (kN)*2	0.0083H + 31	0.0083H + 35	0.0071H + 31	0.0071H + 35
800	Weight (kN)	0.008H + 38	0.008H + 42	0.007H + 37	0.007H + 41
	R1 (kN)*2	0.0075H + 32	0.0075H + 36	0.0064H + 32	0.0064H + 36
	R2 (kN)*2	0.0075H + 24	0.0075H + 28	0.0064H + 24	0.0064H + 28
600	Weight (kN)	0.008H + 34	0.008H + 38	0.007H + 33	0.007H + 37
	R1 (kN)*2	0.0066H + 28	0.0066H + 31	0.0056H + 28	0.0056H + 31
	R2 (kN)*2	0.0066H + 20	0.0066H + 23	0.0056H + 20	0.0056H + 23

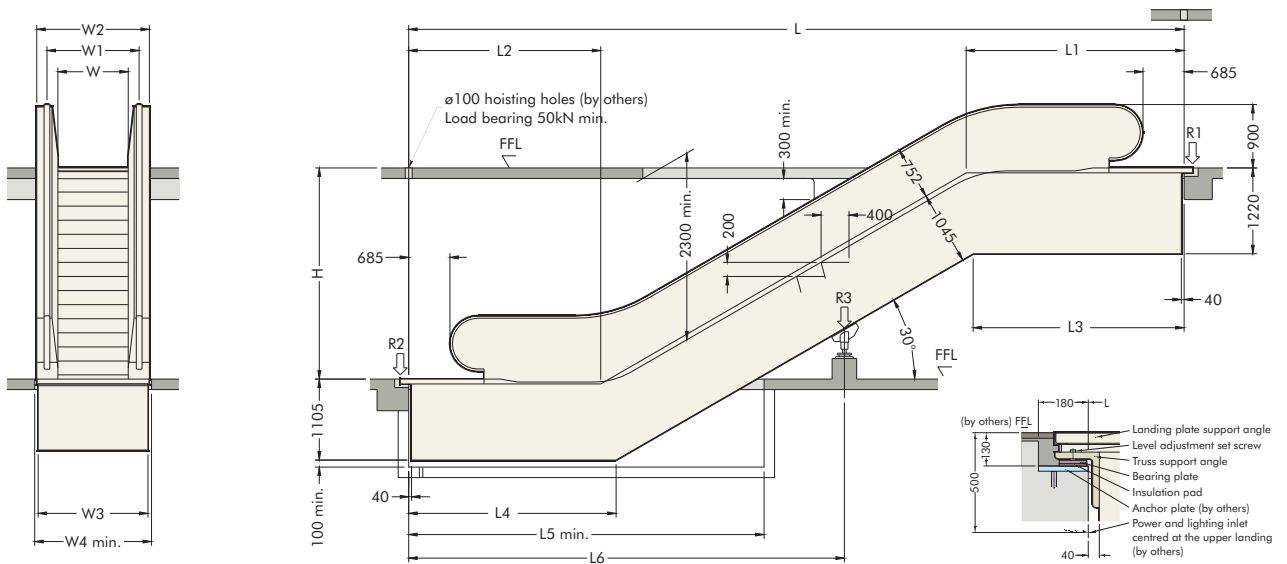
Step Width (W)	1000	800	600
W1	1235	1035	835
W2	1600	1400	1200
W3	1560	1360	1160
W4	1620	1420	1220

Note:

- 1) All dimensions in mm
- 2) For H < 6000, an intermediate support may be required – please consult Stannah

	A2C-30D	A2C-30T	A2C-35D	A2C-35T
Angle - A	30	30	35	35
Flat step	2	3	2	3
Rise - H	3000-7600	3000-7600	3000-6000	3000-6000
L	1.732H + 4765	1.732H + 5745	1.428H + 4905	1.428H + 5885
L1	2759	3249	2790	3280
L2	2006	2496	2115	2605
L3	2573	3063	2549	3039
L4	2192	2682	2356	2846
L5	4080	4570	3910	4400

A2T



W	Model	A2T-30T
1000	Weight (kN)	0.01H + 54
	R1 (kN)*2	0.0093H + 45
	R2 (kN)*2	0.0093H + 37
800	Weight (kN)	0.008H + 59
	R1 (kN)*2	0.0075H + 45
	R2 (kN)*2	0.0075H + 37
600	Weight (kN)	0.008H + 52
	R1 (kN)*2	0.0066H + 39
	R2 (kN)*2	0.0066H + 31

	A2T-30T
Angle - A	30
Flat step	3
Rise - H	3000-9000
L	1.732H + 5745
L1	3249
L2	2496
L3	3150
L4	2793
L5	4818

Step Width (W)	1000	800	600
W1	1260	1060	860
W2	1600	1400	1200
W3	1560	1360	1160
W4	1620	1420	1220

Note:

- 1) All dimensions in mm
- 2) For H < 6000, an intermediate support may be required – please consult Stannah





“Since opening in March 2008, this store sees an average footfall of about 42,000 customers a week. All five Stannah walkways are taking the strain and performing admirably, especially the three walkways that see the heaviest traffic.”

Les Clemo, General Store Manager,
ASDA in Andover



ST moving walkways range

The ST range of moving walkways moves people horizontally and vertically with ease. They are designed and manufactured for busy environments where the continuous movement of people is essential to the successful operation of the building. We offer a wide range of finishes and materials so your walkway can enhance any setting.

4

pallet widths to choose from

10,780

millimetres maximum rise

134,000

millimetres maximum length

STH horizontal

Our horizontal moving walkways feature glass panel balustrades with extra slim handrail guide frames. The STH models are ideal for transport system environments. They make easy work of moving people and luggage in airports and train stations.

STA inclined

Our horizontal moving walkways feature glass panel balustrades with extra slim handrail guide frames. The STH models are ideal for supermarkets as shopping trolleys travel too. Other applications include shopping malls, airports and train stations where people and bags can be moved easily.



STH horizontal



STA inclined

Finishes & options

Our moving walkways are supplied with finishes to complement the environment they serve. Choose from a range of materials and colours to create your individual style.

Part	Standard material and finish	Options available
Pallet	Silver painted die-cast aluminium alloy	Black painted grooves
Comb	Natural colour aluminium alloy	Yellow powder coated
Landing plate	Stainless steel with black etched grooves	Aluminium alloy with black grooves Stainless steel with customised etched pattern and logo
Skirting	Hairline stainless steel	Black or clear anti-friction coating
Decking	Hairline finished stainless steel	Choice of various combination of stainless steel or brass with coloured, hairline or mirror finish
Cladding		Choice of various materials and finish e.g. stainless steel, glass, marble etc.
Balustrade panel	Clear, 10mm tempered safety glass	Choice of 4 other standard colours
Handrail	Black, synthetic rubber, continuous vulcanised, with steel cord reinforcement and nylon cord gliding surface	Choice of 11 other standard colours

Our robust finishes provide solutions for many demanding environments.

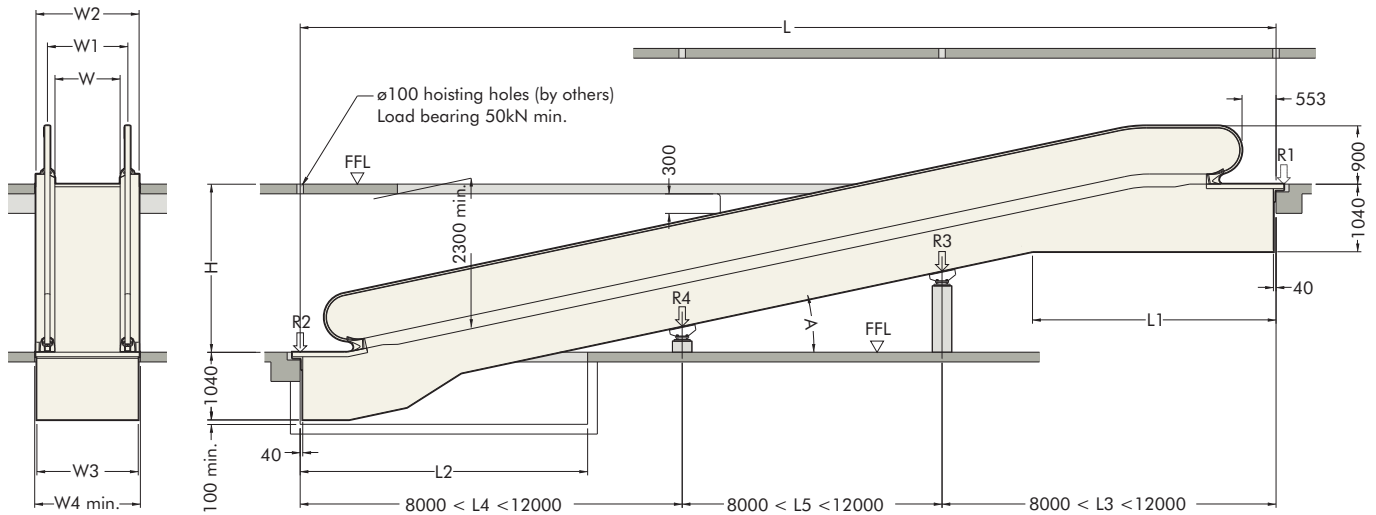




The smooth flow of people around the store is essential to shoppers and staff alike. The walkways simply make life easier for everyone.

Our motor energy controller continuously monitors motor loading conditions to regulate the power feed into the motor. Energy saving of up to 30% can be achieved during light or no load conditions.

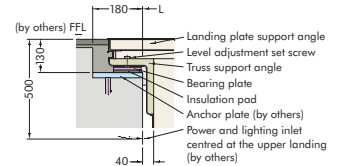
STA inclined



Pallet Width (W)	1000	800
W1	1235	1035
W2	1592	1392
W3	1560	1360
W4	1640	1440

Note:

- 1) All dimensions in mm
- 2) For H < 6000, an intermediate support may be required – please consult Stannah



	ST-1040	ST-1044	ST-1140	ST-1144	ST-1240	ST-1244
Angle - A	10	10	11	11	12	12
Rise - H	1500-10340	1500-10340	1500-10580	1500-10580	1500-10780	1500-10780
L	5.06713H + 2951	5.6713H + 4436	5.1446H + 2977	5.1446H + 4488	4.7046H + 3003	4.7046 + 4541
L1	3934	3034	3790	3789	3672	3672
L2	5750	7260	5300	6830	4900	6480





Removals

Our escalator and moving walkway service includes the removal and disposal of old equipment, all types from all manufacturers. This service is offered stand-alone or part of a replacement with new equipment contract.

We will complete a site survey to ascertain the impact the work will have and how it will affect users. We will then advise of approximate time to allow for the removal and steps that will need to be taken to make the site safe to the public and our engineers.

Removals of existing equipment can take from a few days to a week or more depending on the site. The access to site and equipment, the day to day use of the site and the health and safety considerations may slow the process. Our aim is to provide a safe, efficient removal service with as little disruption as possible.

Our experience includes removing old equipment across the rail network – in demanding environments.

“The moving walkways were removed under incredibly tight deadlines, with no leeway for the unexpected. With careful planning, everything went according to schedule and the client was delighted we’d achieved what seemed impossible.”

David Saunders, Department Manager, Stannah Escalators & Moving Walkways

**Removal, disposal,
all types, all makes**



Maintenance and Repair

We support our customers with regular service checks supplied through one of our standard maintenance contracts. We look after equipment we have installed and equipment by others. This may include lifts on site too.

A standard service visit would entail downtime of the equipment so our engineers can check all safety items, lubricate appropriate working parts and replace worn parts.

The frequency of service visits is dependent on the usage of the equipment together with the environment in which it operates. For example an escalator in a station will need more maintenance than similar equipment in a department store.

Our service engineers work from our network of local service branches right across the UK, so are never far away. They are highly trained on all lift, escalator and moving walkway equipment and are supported by our dedicated escalator/moving walkway technical support team for scheduled and emergency repair work. This means we will keep our promise 'always true to our word' and deliver outstanding service at all times.

We support moving walkways for leading supermarkets, escalators for high-street retailers and both within the rail network.



Refurbishment

The life expectancy of a busy, constantly-used escalator or moving walkway is approximately 10 years. However its life can be extended by refurbishments and upgrades of principal parts of the equipment in preference to complete replacement.

Operators may choose to refurbish for a number of reasons including:

- Improving energy efficiency and reducing emissions
- Reducing running costs
- Bringing equipment up to the latest industry standards to improve safety
- Improving the operational performance including noise reduction, smoother ride
- Renewing the aesthetic appearance of equipment – modernise
- Reducing breakdown incidents, so reducing downtime and loss of revenue, particularly in retail environments

Replacement of old equipment for new can incur large building work costs around the equipment. Refurbishment services can upgrade your equipment for a similar cost of the removal of old equipment, so can save budget, time and disruption to a business. We can provide the service that is best suited to your site, your users and your environment.



Stannah a family of lift expertise

Stannah helps people get on with their lives. Whether it's a lift at the station, a dumbwaiter at the coffee shop, a passenger lift at the office, a platform lift at the library, an escalator in the shopping centre, a moving walkway at the supermarket, a goods lift at the pub or a stairlift at home – we are there quietly helping life happen.

240,000

site visits per year

17,500

new installs per year

1867

the year Joseph Stannah
founded our company

365

days a year call-out

We design, manufacture, supply and install lifts to help life flow. We do this with the utmost care for our customers, our passengers and our staff. Our products are quality engineered, safe and reliable and supplied in the knowledge that we can maintain them 24/7 – efficiently via our service branches right across the UK.

By continually investing in new technologies, new products and our highly trained nationwide workforce we deliver value-for-money excellence. We are proud to be an independent family company whose specialist product and service divisions give our customers expert support right across our portfolio.



Meet the family



Passenger Lifts



Escalators and Moving Walkways



Platform Lifts



Service and Goods Lifts



Lift Refurbishment

More products in the Stannah range

Passenger lifts

We first engineered passenger lifts in the 1860s. Today we offer our customers an ever-growing choice and flexibility. Our lifts are hydraulic or traction, wall-mounted or structure-supported, travels to match any building, in models to carry from 6 - 64 people. This includes standard and bespoke lifts with a wealth of finishes to suit any interior.

Platform lifts

Our economical, space-saving platform lifts are designed to provide 'access for all'. Our vertical platform lift range provides cost-effective alternatives to traditional passenger lifts in buildings where people traffic is not constant. Choose from several designs, wall-mounted or structure-supported, to carry up to 4 people. Our inclined platforms provide over-the-stairs travel for single users.

Major lift refurbishment and bespoke lifts

Stannah undertakes special lift refurbishment and modernisation projects, often to maximise the use of new technology and save operating costs. We also supply and install bespoke lifts for unique places, working with our clients to their specifications.

Service and goods lifts

When it comes to moving anything from hot plates to heavy goods pallets, Stannah can provide the solution. The Microlift is Europe's best selling dumbwaiter for loads from 50-100kg. Our Trolleylift range can handle loads up to 300kg with floor-level loading when required. When loads up to 1500kg need to

be moved the Goodsmaster range, which includes an attendant controlled lift, is the answer. Our heavy duty solutions for loads up to 3000kg complete the range.

Lift service and repair

We provide local service, nationwide, from our network of branches across the UK. Our highly-trained engineers look after thousands of lifts 24/7, 365 days a year – our own products and most types of lifts from all other manufacturers.

And last but not least...

Stairlifts

Stannah stairlifts are as stylish as they are practical. Since 1975 over 500,000 units have been sold worldwide, making Stannah global market leaders in stairlifts.



Bespoke Lifts



Stairlifts



Lift Service and Repair

Stannah



Stannah Lift Services

Head Office and Major Projects Department:

Watt Close, East Portway, Andover, Hampshire SP10 3SD

HO Tel: 01264 364311 MP Tel: 01264 384790

National Sales and Network Rail Departments:

Unit 8, Swan Business Park, Sandpit Road, Dartford, Kent DA1 5ED

NS Tel: 01322 299800 NR Tel: 01322 299845

National Contracts and Escalators & Moving Walkways Departments:

No1 Ravensquay Business Centre, Cray Avenue, Orpington, Kent BR5 4BQ

NC Tel: 01689 883240 EMW Tel: 01689 883259

