

Protective Cover - Smart + Enviro



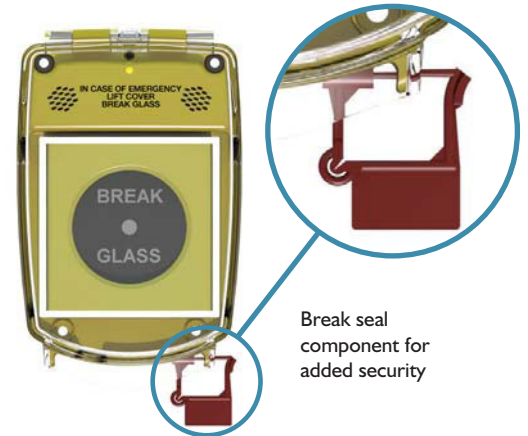
The Smart+Enviro is a tough polycarbonate hinged waterproof protective cover that can easily be installed over a range of call points, emergency switches and other devices to provide protection from vandalism, accidental damage or misuse. It has been designed and engineered to provide protection for devices exposed to hostile environments.

The Smart+Enviro can also be fitted with an integral battery powered alarm, that when lifted emits an ear piercing 90dB alarm, warning the user that the device is for emergency use only and should not be tampered with.

Applications include off-shore, the food and beverage industry, swimming pools and leisure centres, underground installations and any area where exposure to the environment is likely to cause damage to control equipment or switching devices.

Features

- Smart design and engineering resulting in an aesthetically pleasing but tough retrofittable protective cover
- Designed for ease of installation, the Smart+Enviro can be fitted and protecting devices in minutes
- An optional battery powered 90dB alarm can be fitted increasing the security and protection of the device it is covering
- The alarmed Smart+Enviro has a 3 year battery life and incorporates a low battery warning LED
- A break seal can also be fitted to increase the visible deterrence against misuse
- Available in 5 colours: red, green, yellow, blue and white
- Three surface mounting spacers are available 18mm, 32mm (standard) and 50mm

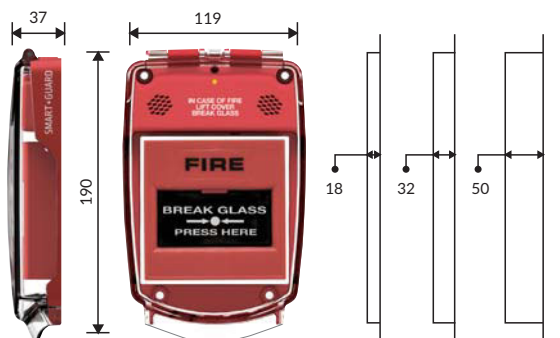


Break seal component for added security

Optional threaded insert provides various weatherproof installation options



Installation



Dimensions (mm)

Colours



Part Numbers

- SGE-F-x: Waterproof, No Sounder, Flush Mounting
 SGE-S-x: Waterproof, No Sounder, Surface Mounting
 SGE-FS-x: Waterproof, Integral Sounder, Flush Mounting
 SGE-SS-x: Waterproof, Integral Sounder, Surface Mounting
 SG-SMS18: Surface Mounting Spacer 18mm Deep
 SG-SMS32: Surface Mounting Spacer 32mm Deep
 (Supplied as standard with surface mount models)
 SG-SMS50: Surface Mounting Spacer 50mm Deep
 x = R for Red, Y for Yellow, G for Green,
 B for Blue, W for White.



Hoyles Electronic Developments Ltd

T. 01744 886600

F. 01744 886607

E. sales@hoyles.com

W. www.hoyles.com