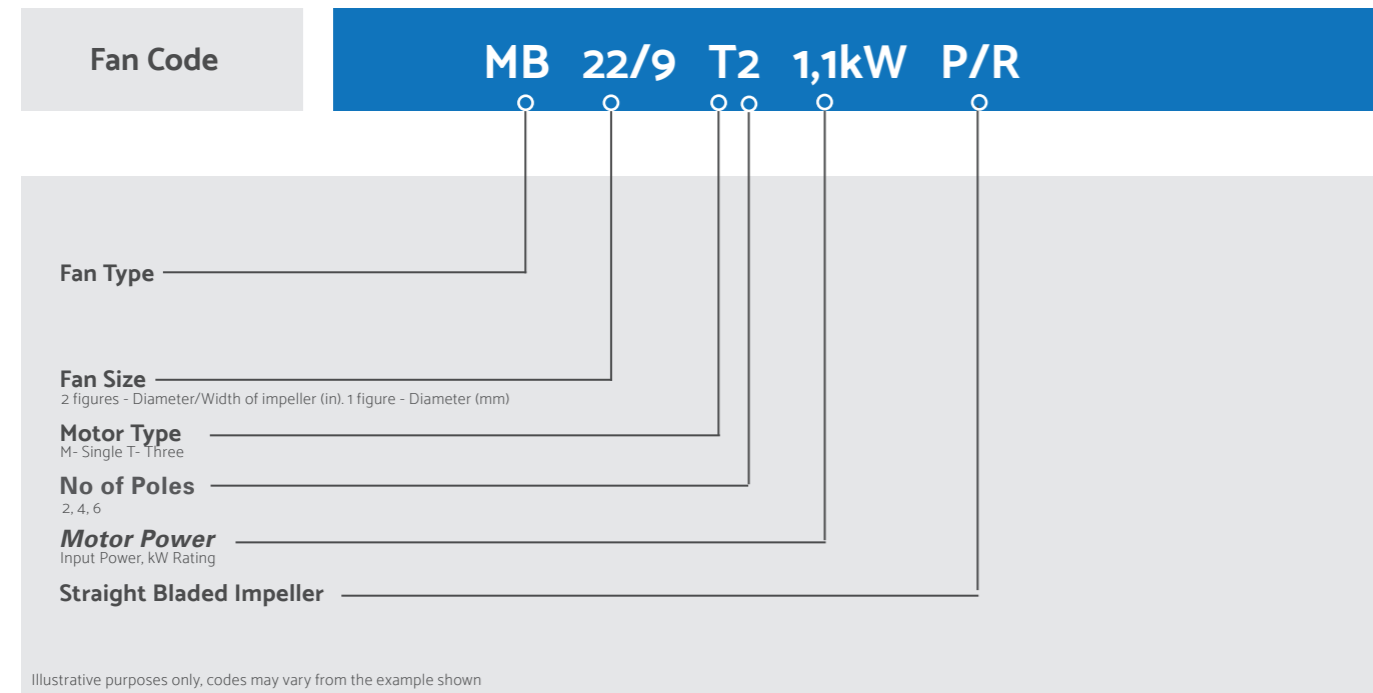


Medium Pressure Centrifugal Fans

Axair medium pressure centrifugal fans with high efficiency backward curved or high performance forward curved centrifugal impellers, are suitable for a wide range of applications including heavy duty, material handling, high temperature, dusty air and process industries. Many of our ranges are available with ATEX certification, making them suitable for use in hazardous environments. Contact us for more information on our capability, noting the hazardous zone of your application.

Axair have the capability to supply fans that provide the best possible benefit to customers while taking the design demands and the customer's application into consideration.



About Axair Fans

Axair Fans offer the widest range of industrial fans available from a single source, operating as the exclusive UK distributor for seven international fan manufacturers. It is our policy to supply fans, ventilation equipment and accessories to commercial and industrial clients. By continually monitoring, developing and improving our own procedures, resources and staff training, we will provide consistently high quality products, service and technical support to our clients. Many products ranges within the Axair portfolio are available from stock within our 12000m³ warehouse, or on short lead times.

Close working relationships with suppliers, to ensure:

- The latest technology & innovative designs from specialist manufacturers
- Product know how immediately available
- Continuous replenishment of UK stocks
- Competitive prices for standard and special products

Close working relationships with customers, to ensure:

- Security stock is quarantined & agreed and delivery schedules are honoured
- Technical product and application advice
- Stock modifications developed in the UK
- Ultimate customer care, from the design stage, through to the after sales service



MANUFACTURING FEATURES

- Rolling steel sheet housing.
- Cast aluminium impeller.
- Epoxy powder finishing coat.
- Standard asynchronous squirrel-cage motor with IP55 protection and Class F insulation.
- Manufactured with standard voltages: 230V 50Hz in single phase motors and 230/400V 50Hz in three phase motors.
- Default assembly orientation is LG270.

APPLICATIONS

Designed for inline installation, they are suitable for:

- Industrial applications, air extraction or injection.
- Cooling of machines and parts.
- Clean and slightly dusty air transport.
- Maximum working temperature: carried air 130°C, environment: 60°C.

UNDER REQUEST

- 60Hz fans and special voltages.
- Orientations: LG 0, LG 90, LG 180.

SINGLE PHASE RANGE

Code	Model	Rated R.P.M.	Rated Curr. (A) 230V	Rated Power kW	Air Flow m ³ /h	Sound dB (A)	Weight Kg
253180162	MA 18 M2 0,09kW	2800	0,75	0,09	180	53	6
253220162	MA 24 M2 0,09kW	2800	0,75	0,09	260	57	7
253270162	MA 25 M2 0,18kW	2800	1,42	0,18	480	59	11

THREE PHASE RANGE

Code	Model	Rated R.P.M.	Rated curr. (A)		Rated Power kW	Air flow m ³ /h	Sound dB (A)	Weight Kg
			230V	400V				
253180161	MA 18 T2 0,09kW	2800	0,55	0,32	0,1	180	53	6
253220161	MA 24 T2 0,09kW	2800	0,55	0,32	0,1	260	57	7
253270161	MA 25 T2 0,18kW	2800	0,87	0,51	0,18	480	59	11

Additional Information

For additional information on any of our medium pressure centrifugal fans including performance curves, wiring diagrams and dimensions, contact our technical department on 01782 349 430 or email us on sales@axair-fans.co.uk.

Visit our website www.axair-fans.co.uk or follow our social media accounts to stay up to date with the latest news from Axair Fans.



MANUFACTURING FEATURES

- Cast aluminium housing.
- Cast aluminium forward blades casing.
- Epoxy powder finishing coat.
- Standard asynchronous squirrel-cage motor with IP55 protection and Class F insulation.
- Manufactured with standard voltages: 230V 50Hz in single phase motors and 230/400V 50Hz in three phase motors.
- Default assembly orientation is LG270.

APPLICATIONS

Designed for inline installation, they are suitable for:

- Industrial applications, air extraction or injection.
- Cooling of machines and parts.
- Clean and slightly dusty air transport.
- Maximum working temperature: Carried air 130°C, Environment air: 60°C.

UNDER REQUEST

- 60Hz fans and special voltages.
- Orientations: LG 0, LG 45, LG 90, LG 135, LG 180, LG315.

SINGLE PHASE RANGE

Code	Model	Rated R.P.M.	Rated Curr. (A) 230V	Rated Power kW	Air Flow m³/h	Sound dB (A)	Weight Kg
253300104	MA 26 M2 0,37kW	2800	2,61	0,37	750	64	13

THREE PHASE RANGE

Code	Model	Rated R.P.M.	Rated Current (A)		Rated Power kW	Air Flow m³/h	Sound dB (A)	Weight Kg
			230V	400V				
253300106	MA 26 T2 0,37kW	2800	1,58	0,91	0,37	750	64	13
253330106	MA 27 T2 0,55kW	2800	2,23	1,29	0,55	860	66	14
253390106	MA 28 T2 1,1kW	2800	4,05	2,33	1,1	1.450	69	20
253430106	MA 31 T2 2,2kW	2800	7,97	4,58	2,2	2.170	72	30



MANUFACTURING FEATURES

- Cast aluminium housing.
- Straight blade made of cast aluminium.
- Epoxy powder finishing coat.
- Squirrel cage asynchronous standard motor, IP55 protection and rated class F insulation. Standard voltages 230/400V 50Hz.
- Default assembly orientation is LG270.

APPLICATIONS

Designed for inline installation, they are suitable for:

- Solid material transport (except for textile fibres).
- Maximum working temperature: Carried Air 130°C, Environment: 60°C.

UNDER REQUEST

- 60Hz fans and special voltages.
- 2 speed motors
- Orientations: LG 0, LG 45, LG 90, LG 135, LG 180, LG 315.

THREE PHASE RANGE

Code	Model	Rated R.P.M.	Rated Curr. (A)		Rated Power kW	Air Flow m³/h	Sound dB (A)	Weight Kg
			230V	400V				
253300160	MA 26 T2 0,37kW P/R	2800	1,58	0,91	0,37	700	52	14
300006000	MA 27 T2 0,55kW P/R	2800	2,23	1,29	0,55	850	54	16
300140600	MA 28 T2 0,75kW P/R	2800	2,75	1,58	0,75	1.400	56	21
300032600	MA 31 T2 1,5kW P/R	2800	5,46	3,14	1,5	1800	59	25



MB 12/5 - 20/8



MB 22/9 - 28/11



MB 31/12 - 45/18

MANUFACTURING FEATURES

- Rolling steel sheet housing.
- Completely joined or welded housing.
- Galvanised steel sheet and single inlet forward curved impeller.
- Epoxy powder finishing coat.
- Standard asynchronous squirrel-cage motor with IP55 protection and Class F insulation.

Manufactured with standard voltages: 230V 50Hz in single phase motors and 230/400V 50Hz in three phase motors.

- Default assembly orientation is LG270.

APPLICATIONS

- Designed for inline installation, MB fans are suitable for:
- Industrial applications, air extraction or injection.
 - Cooling of machines and parts.
 - Clean air transport.
 - Maximum working temperature: Carried air 130°C, Environment: single phase 50°C, three phase 60°C.

UNDER REQUEST

- 60 Hz fans and special voltages.
- 2 speed motors.
- Fans for air working temperatures up to 250°C.
- Positions: LG 0, LG 45, LG 90, LG 135, LG 180, LG 225, LG 315, RD 0, RD 45, RD 90, RD 135, RD 180, RD 225, RD 270, RD 315.

SINGLE PHASE RANGE

Code	Model	Rated R.P.M.	Rated Curr. (A) 230V	Rated Power kW	Air Flow m³/h	Sound dB (A)	Weight Kg
253100103	MB 14/5 M2 0,25kW	2800	1,87	0,25	830	58	7
25310103	MB 16/6 M2 0,37kW	2800	2,61	0,37	1340	61	9,5
253170103	MB 18/7 M2 0,75kW	2800	4,93	0,75	1940	63	15
253240103	MB 20/6 M2 0,37kW	2800	2,61	0,37	800	61	14
253190103	MB 20/8 M2 1,1kW	2820	7,45	1,1	2240	66	19
253080103	MB 12/5 M4 0,08kW	1370	0,9	0,08	240	47	5
253090103	MB 14/5 M4 0,08kW	1370	0,9	0,08	420	47	6
253150103	MB 16/6 M4 0,08kW	1370	0,9	0,08	710	54	7,5

THREE PHASE RANGE

Code	Model	Rated R.P.M.	Rated Current (A)		Rated Power kW	Air Flow m³/h	Sound dB (A)	Weight Kg
			230V	400V				
253100106	MB 14/5 T2 0,25kW	2800	1,12	0,65	0,25	830	58	7
25310106	MB 16/6 T2 0,37kW	2800	1,58	0,91	0,37	1340	61	9,5
253170106	MB 18/7 T2 0,75kW	2800	2,75	1,58	0,75	1940	63	15
253240106	MB 20/6 T2 0,37kW	2800	1,58	0,91	0,37	800	61	14
253190106	MB 20/8 T2 1,1kW	2800	4,05	2,33	1,1	2240	66	19
253080106	MB 12/5 T4 0,08kW	1400	0,035	0,2	0,08	250	47	5
253090106	MB 14/5 T4 0,08kW	1400	0,035	0,2	0,08	420	47	6
253150106	MB 16/6 T4 0,08kW	1400	0,035	0,2	0,08	710	54	7,5
253210120	MB 22/9 T2 1,1kW	2800	4,05	2,33	1,1	1.570	55	24
253200106	MB 22/9 T2 2,2kW	2800	7,97	4,58	2,2	2.750	65	30
253280106	MB 25/10 T2 2,2kW	2800	7,97	4,58	2,2	2.550	62	32
253290106	MB 25/10 T2 3kW	2870	10,3	5,92	3	3.700	66	38
253360106	MB 28/11 T2 4kW	2890	13,3	7,63	4	3.800	70	46
253260106	MB 22/9 T4 0,37kW	1400	1,86	1,07	0,37	1.930	59	21
253320106	MB 25/10 T4 0,75kW	1390	2,83	1,63	0,75	2.530	59	26
253410106	MB 28/11 T4 1,1kW	1400	4,33	2,49	1,1	3.490	65	32
253420106	MB 31/12 T4 2,2kW	1430	8,07	4,64	2,2	6.160	63	54
253480106	MB 35/14 T4 3kW	1430	10,7	6,17	3	6.500	65	63
253490106	MB 35/14 T4 4kW	1440	14,5	8,32	4	8.290	64	69
253510121	MB 40/16 T4 5,5kW	1440	-	10,5	5,5	9.000	68	101
253510106	MB 40/16 T4 7,5kW	1440	-	14,1	7,5	11.500	72	110
253530120	MB 45/18 T4 7,5kW	1440	-	14,1	7,5	9.500	75	119
253530121	MB 45/18 T4 11kW	1460	-	21,2	11	14.000	76	190
253500106	MB 35/14 T6 1,1kW	910	4,83	2,78	1,1	5.170	58	53
253520106	MB 40/16 T6 1,5kW	940	6,45	3,71	1,5	7.150	59	94
253560106	MB 45/18 T6 2,2kW	940	10,3	5,94	2,2	6.800	64	112



MANUFACTURING FEATURES

- Welded stainless steel AISI 304 housing.
- Stainless steel single inlet forward curved impeller.
- Standard asynchronous squirrel-cage motor with IP55 protection and Class F insulation. Manufactured with standard voltages: 230V 50Hz in single phase motors and 230/400V 50Hz in three phase motors.

APPLICATIONS

- Designed for inline installation, they are suitable for:
- Industrial applications, air extraction or injection.
 - Cooling of machines and parts.
 - Clean air transport.
 - Corrosive air transport.
 - Maximum working temperature: Carried air 130°C, Environment: single phase 50°C, three phase 60°C.

UNDER REQUEST

- 60Hz fans and special voltages.
- 2 speed motors.
- Fans provided with cooling disk for high temperatures.

SINGLE PHASE RANGE

Code	Model	Rated R.P.M.	Rated Curr. (A) 230V	Rated Power kW	Air Flow m³/h	Weight Kg
300716100	MDI 10/5 M2 0,12kW	2850	0,94	0,09	330	2,4
300716400	MDI 13/6 M2 0,18kW	2850	1,42	0,18	600	5,3
300716600	MDI 13/8 M2 0,25kW	2850	1,87	0,25	900	9,4
300716700	MDI 16/8 M2 0,37kW	2850	2,61	0,37	1.300	6,2
300716900	MDI 18/8 M2 0,55kW	2850	3,71	0,55	1.600	10,2
300717100	MDI 20/10 M2 1,1kW	2850	6,71	1,1	3.500	19
300717500	MDI 25/13 M2 2,2kW	2850	13,67	2,2	3.350	11
300716300	MDI 13/6 M4 0,12kW	1450	1,15	0,12	400	4,9
300716500	MDI 13/8 M4 0,12kW	1450	1,15	0,12	500	5,8
300716800	MDI 16/8 M4 0,12kW	1450	1,15	0,12	800	9
300717000	MDI 18/8 M4 0,25kW	1450	1,93	0,25	1.300	9,7
300717200	MDI 20/10 M4 0,25kW	1450	1,93	0,55	1.600	11
300717300	MDI 25/13 M4 0,37kW	1450	2,82	0,55	3.000	24

THREE PHASE RANGE

Code	Model	Rated R.P.M.	Rated Curr. (A)		Rated Power kW	Air Flow m³/h	Weight Kg
			230V	400V			
300717600	MDI 10/5 T2 0,12kW	2850	0,64	0,36	0,09	330	2,4
300717800	MDI 13/6 T2 0,18kW	2850	0,87	0,51	0,18	600	5,3
300718100	MDI 13/8 T2 0,25kW	2850	1,12	0,65	0,25	900	9,4
300718200	MDI 16/8 T2 0,37kW	2850	1,58	0,91	0,37	1.300	6,2
300718400	MDI 18/8 T2 0,55kW	2850	2,23	1,29	0,55	1.600	10,2
300718600	MDI 20/10 T2 1,1kW	2850	4,42	2,55	1,1	3.500	19
300718800	MDI 25/13 T2 2,2kW	2850	8,61	4,98	2,2	3.350	32
300717900	MDI 13/6 T4 0,12kW	1450	0,8	0,46	0,12	400	4,9
300718000	MDI 13/8 T4 0,12kW	1450	0,8	0,46	0,12	500	5,8
300718300	MDI 16/8 T4 0,12kW	1450	0,8	0,46	0,12	800	9
300718500	MDI 18/8 T4 0,25kW	1450	1,38	0,79	0,25	1.300	9,7
300718700	MDI 20/10 T4 0,25kW	1450	1,38	0,79	0,55	1.600	11
300718900	MDI 25/13 T4 0,37kW	1450	1,86	1,07	0,55	3.000	24



MANUFACTURING FEATURES

- Fan made of Fe360 sheet.
- The fan paint finish is a Qualicoat polyester powder coating stoved at 200°C, with an average film thickness of 70 microns.
- Average heat resistance of coating is 180°C with peaks of 200°C.
- Single inlet forward curved impeller made of Fe360 sheet statically and dynamically balanced.
- Impellers are painted with epoxy primer that resists temperatures up to 300°C.
- Squirrel cage asynchronous standard motor, IP55 protection and rated class F insulation.
- Standard voltages 230/400V 50Hz up to 4kW, and 400/690V 50Hz for higher powers.
- Standard orientation LG270.
- Allows for adjusting the orientation on models 180 to 630. Models sizes from 710 to 1000 size the orientation is fixed.

APPLICATIONS

Designed for inline installation, they are suitable for:

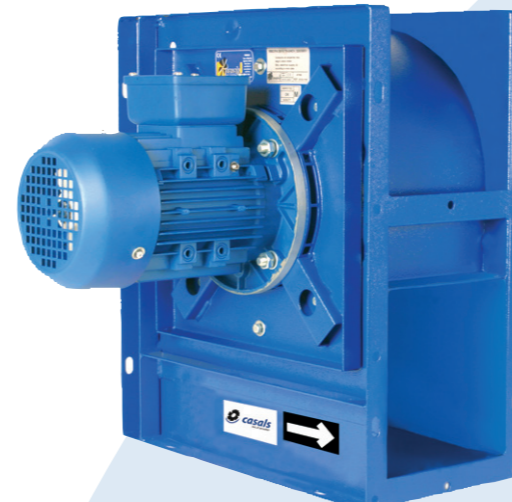
- Industrial applications, air extraction or injection.
- Cooling of machines and parts.
- Clean air transport.
- Aspiration of vapours in places where moving large volumes of air at low pressures.
- Maximum working temperature: Carried air 130°C, Environment 60°C.

UNDER REQUEST

- 60 Hz fans and special voltages.
- 2 speed motors.
- ATEX certified
- Fans for air working high temperatures (up to 250°C depending on the model).
- Hot-dipped galvanised or stainless steel fans.
- Orientations: RDO, RD45, RD90, RD135, RD180, RD225, RD270, RD315, LGO, LG45, LG90, LG135, LG180. LG225, LG315.

THREE PHASE RANGE

Code	Model	Rated R.P.M.	Rated Current (A)		Rated Power kW	Air Flow m³/h	Sound dB (A)	Weight Kg
			230V	400V				
501401816	MBCA 180 T2 0,55kW	2800	2,23	1,29	0,55	1,230	48	19
501401818	MBCA 180 T2 1,1kW	2800	4,05	2,33	1,1	1,800	52	25
501402018	MBCA 200 T2 1,1kW	2800	4,05	2,33	1,1	1,800	52	27
501402027	MBCA 200 T2 2,2kW	2800	7,97	4,58	2,2	2,880	57	33
501402219	MBCA 220 T2 1,5kW	2800	5,46	3,14	1,5	2,160	53	32
501402229	MBCA 220 T2 3kW	2870	10,3	5,92	3	3,960	59	41
501402529	MBCA 250 T2 3kW	2870	10,3	5,92	3	3,240	56	51
501402532	MBCA 250 T2 4kW	2890	13,3	7,63	-	4,680	60	60
501402834	MBCA 280 T2 5,5kW	2900	-	10,6	5,5	4,680	60	82
501402836	MBCA 280 T2 7,5kW	2900	-	14,1	7,5	6,120	63	90
501402240	MBCA 220 T4 0,18kW	1400	1,07	0,62	0,18	1,230	39	26
501402242	MBCA 220 T4 0,37kW	1400	1,86	1,07	0,37	1,800	41	28
501402542	MBCA 250 T4 0,37kW	1400	1,86	1,07	0,37	1,800	44	30
501402543	MBCA 250 T4 0,55kW	1400	2,57	1,49	0,55	2,520	47	33
501402844	MBCA 280 T4 0,75kW	1390	2,83	1,63	0,75	3,000	47	40
501402845	MBCA 280 T4 1,1kW	1400	4,33	2,49	1,1	3,800	51	42
501403146	MBCA 310 T4 1,5kW	1400	5,67	3,26	1,5	4,300	52	50
501403154	MBCA 310 T4 2,2kW	1430	8,07	4,64	2,2	5,400	56	58
501403554	MBCA 350 T4 2,2kW	1430	8,07	4,64	2,2	5,400	53	66
501403556	MBCA 350 T4 3kW	1430	10,7	6,17	3	7,200	56	66
501403559	MBCA 350 T4 4kW	1440	14,5	8,32	4	7,920	59	76
501404061	MBCA 400 T4 5,5kW	1440	-	10,5	5,5	7,920	58	100
501404063	MBCA 400 T4 7,5kW	1440	-	14,1	7,5	10,800	62	108
501404552	MBCA 450 T4 15kW	1460	-	29,8	15	18,000	66	170
501404563	MBCA 450 T4 7,5kW	1440	-	14,1	7,5	10,080	57	112
501405052	MBCA 500 T4 15kW	1460	-	29,8	15	16,200	61	200
501405055	MBCA 500 T4 22kW	1470	-	40,1	22	21,600	66	272
501405655	MBCA 560 T4 22kW	1470	-	40,1	22	21,600	61	313
501405658	MBCA 560 T4 37kW	1430	10,7	6,17	37	32,400	69	497
501403170	MBCA 310 T6 0,37kW	900	2,2	1,27	0,37	2,160	42	43
501403171	MBCA 310 T6 0,55kW	900	3	1,8	0,55	3,240	45	44
501403572	MBCA 350 T6 0,75kW	910	3,39	1,95	0,75	3,960	47	56
501403573	MBCA 350 T6 1,1kW	910	4,83	2,78	1,1	5,400	49	59
501404074	MBCA 400 T6 1,5kW	940	6,45	3,71	1,5	5,400	48	82
501404078	MBCA 400 T6 2,2kW	940	10,3	5,94	2,2	7,920	52	90
501404580	MBCA 450 T6 3kW	960	12,7	7,3	3	9,000	52	112
501405083	MBCA 500 T6 4kW	960	16,5	9,46	4	9,000	52	153
501405085	MBCA 500 T6 5,5kW	960	-	12,8	5,5	10,800	56	153
501405675	MBCA 560 T6 11kW	970	-	22,6	11	21,600	61	233
501405687	MBCA 560 T6 7,5kW	965	-	15,2	7,5	16,200	56	221
501406375	MBCA 630 T6 11kW	970	-	22,6	11	19,800	56	243
501406377	MBCA 630 T6 18,5kW	975	-	35,7	18,5	28,800	63	400



MANUFACTURING FEATURES

- Reinforced rolling steel sheet housing completely welded with epoxy powder finishing coat.
- Simple inlet forward curved reinforced impeller made of galvanised sheet.
- Standard asynchronous squirrel-cage motor with IP55 protection and Class F insulation.
- Manufactured with standard voltages: 230V 50Hz in single phase motors and 230/400V 50Hz in three phase motors up to 4kW, and 400/690V 50Hz for higher powers.
- Default assembly orientation is LG270.

APPLICATIONS

Designed for inline installation, they are suitable for:

- Hot air exhaust in ovens or facilities with high temperatures.
- Clean air transport.
- Maximum working temperature: Carried Air up to 250°C, Environment: single phase 50°C, three phase 60°C.

UNDER REQUEST

- 2 speed motors.
- Orientations: LGO, LG90, LG180.

SINGLE PHASE RANGE

Code	Model	Rated R.P.M.	Rated Current 230V (A)	Rated Power kW	Air Flow m³/h	Sound dB (A)	Weight Kg
253310143	MBC 25/10 M4 1,1kW	1400	7,45	1,1	2,530	61	63
253300143	MBC 25/10 M6 0,55kW	890	3,9	0,55	1,670	57	61
253380143	MBC 28/11 M6 0,75kW	900	4,9	0,75	2,300	58	67

THREE PHASE RANGE

Code	Model	Rated R.P.M.	Rated Current (A)		Rated Power kW	Air Flow m³/h	Sound dB (A)	Weight Kg
			230V	400V				
253280146	MBC 25/10 T2 2,2kW	2800	7,97	4,58	2,2	2,550	64	65
253290146	MBC 25/10 T2 3kW	2870	10,3	5,92	3	3,700	66	66
253360146	MBC 28/11 T2 4kW	2890	13,3	7,63	4	3,800	69	66
253310146	MBC 25/10 T4 1,1kW	1400	4,33	2,49	1,1	2,530	61	64
253370146	MBC 28/11 T4 2,2kW	1430	8,07	4,64	2,2	3,490	64	70
253460146	MBC 31/12 T4 3kW	1430	10,7	6,17	3	6,160	68	72
253480146	MBC 35/14 T4 3kW	1430	10,7	6,17	3	6,500	73	75
253490146	MBC 35/14 T4 5,5kW	1440	-	10,5	5,5	8,290	74	78
253510146	MBC 40/16 T4 5,5kW	1440	-	10,5	5,5	9,000	76	87
253520146	MBC 40/16 T4 7,5kW	1440	-	14,1	7,5	11,500	77	89
253530146	MBC 45/18 T4 5,5kW	1440	-	10,5	5,5	8,500	80	91
253540146	MBC 45/18 T4 7,5kW	1440	-	14,1	7,5	9,500	81	93
253300146	MBC 25/10 T6 0,55kW	900	3	1,8	0,55	1,670	57	63
253380146	MBC 28/11 T6 0,75kW	910	3,39	1,95	0,75	2,300	58	69
253430146	MBC 31/12 T6 1,5kW	940	6,45	3,71	1,5	4,060	64	71
253470146	MBC 35/14 T6 1,5kW	940	6,45	3,71	1,5	5,170	68	77
253500146	MBC 40/16 T6 2,2kW	940	10,3	5,94	2,2	7,150	71	86
253560146	MBC 45/18 T6 2,2kW	940	10,3	5,94	2,2	6,800	76	90



MANUFACTURING FEATURES

- Rolled steel sheet housing.
- Completely welded and reinforced housing.
- Single inlet straight blade impeller manufactured in steel sheet and with reinforced with a welded ring protected with epoxy powder finishing coat.
- Epoxy powder finishing coat.
- Standard asynchronous squirrel-cage motor with IP55 protection and rated class F insulation. Manufactured with standard voltages 230V 50Hz for single phase motors and 230/400V 50Hz in three phase motors up to 4kW, and 400/690V 50Hz for higher powers.
- Default assembly orientation is LG270.

APPLICATIONS

Designed for inline installation, they are suitable for:

- Solid material transport (except for textile fibres).
- Maximum working temperature: Carried Air 130°C, Environment: 60°C.

UNDER REQUEST

- 2 speed motors.
- Hot-dipped galvanised or stainless steel fans.
- Fans for air working temperatures up to 250°C.
- Orientations: LGO, LG 45, LG 90, LG 135, LG 180, LG225, LG315, RDo, RD45, RD90, RD135, RD180, RD225, RD 270, RD315.
- Fans provided with cooling disk for high temperatures.

THREE PHASE RANGE

Code	Model	Rated R.P.M.	Rated Curr. (A)		Rated Power kW	Air Flow m³/h	Sound dB (A)	Weight Kg
			230V	400V				
253210160	MB 22/9 T2 1,1kW P/R	2800	4,05	2,33	1,1	2.100	71	23
253280160	MB 25/10 T2 1,5kW P/R	2800	5,46	3,14	1,5	2.550	73	31
253360161	MB 28/11 T2 2,2kW P/R	2800	7,97	4,58	2,2	4.500	76	40
253450160	MB 31/12 T2 3kW P/R	2870	10,3	5,92	3	5.300	78	55
253480161	MB 35/14 T2 5,5kW P/R	2900	-	10,6	5,5	7.800	81	85
253510160	MB 40/16 T2 7,5kW P/R	2900	-	14,1	7,5	9.500	85	103
253530160	MB 45/18 T2 11kW P/R	2930	-	20,8	11	10.500	88	180
253530161	MB 45/18 T2 15kW P/R	2930	-	27,4	15	12.500	88	191



MANUFACTURING FEATURES

- Fan made of Fe360 sheet.
- Fully welded and reinforced housing.
- Single inlet straight blade impeller made of made of Fe360 sheet statically and dynamically balanced.
- The fan paint finish is a Qualicoat polyester powder coating stoved at 200°C, with an average film thickness of 70 microns.
- Average heat resistance of coating is 180°C with peaks of 200°C.
- Impellers are painted with epoxy primer that resists temperatures up to 300°C.
- Standard asynchronous squirrel-cage motor with IP55 protection and rated class F insulation. Standard voltages 230V 50Hz for single phase motors, 230/400V 50Hz for three phase, motors up to 4kW and 400/690V 50Hz for higher powers.
- Standard orientation LG270.
- It allows adjusting the orientation on models 220 to 630. Models sizes from 710 to 1000 size the orientation is fixed.

APPLICATIONS

Designed for inline installation, they are suitable for:

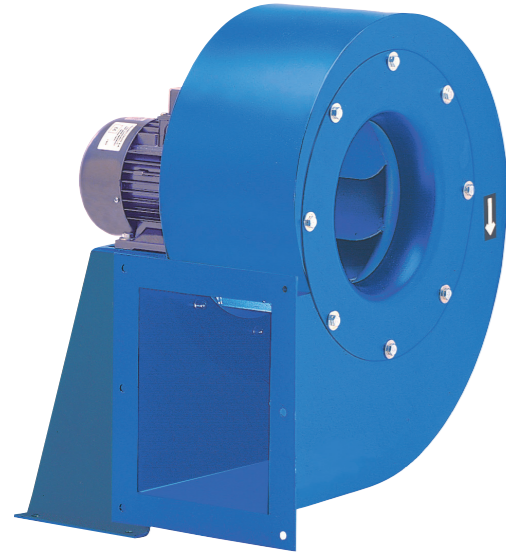
- For pneumatic transport of solid materials mixed with air, sawdust and wood chips, also filamentary materials.
- Maximum working temperature: Carried Air 130°C, Environment: 60°C.

UNDER REQUEST

- 2 speed motors.
- ATEX certified
- Fan for air working temperatures up to 250°C (depending on the model).
- Hot-dipped galvanised or stainless steel fans.
- Orientation: RDo, RD45, RD90, RD135, RD180, RD225, RD270, RD315, LGO, LG45, LG90, LG135, LG180. LG225, LG315.

THREE PHASE RANGE

Code	Model	Rated R.P.M.	Rated Curr. (A)		Rated Power kW	Air Flow m³/h	Sound dB (A)	Weight Kg
			230V	400V				
501502215	MBZM 220 T2 0,37kW P/R	2800	1,58	0,91	0,37	870	52	20
501502516	MBZM 251 T2 0,55kW P/R	2800	2,23	1,29	0,55	1.080	55	25
501502517	MBZM 252 T2 0,75kW P/R	2800	2,75	1,58	0,75	1.230	56	30
501502818	MBZM 281 T2 1,1kW P/R	2800	4,05	2,33	1,1	1.370	57	33
501502819	MBZM 282 T2 1,5kW P/R	2800	5,46	3,14	1,5	1.800	59	37
501503119	MBZM 311 T2 1,5kW P/R	2800	5,46	3,14	1,5	1.620	59	43
501503127	MBZM 312 T2 2,2kW P/R	2800	7,97	4,58	2,2	2.160	61	47
501503529	MBZM 351 T2 3kW P/R	2870	10,3	5,92	3	2.520	64	63
501503532	MBZM 352 T2 4kW P/R	2890	13,3	7,63	4	3.600	65	72
501504034	MBZM 401 T2 5,5kW P/R	2900	-	10,6	5,5	4.320	67	101
501504036	MBZM 402 T2 7,5kW P/R	2900	-	14,1	7,5	5.400	69	106
501504521	MBZM 452 T2 11kW P/R	2930	-	20,8	11	7.200	72	155
501505024	MBZM 501 T2 15kW P/R	2930	-	27,4	15	9.000	73	180
501505028	MBZM 502 T2 22kW P/R	2940	-	39,8	22	10.800	75	250
501504546	MBZM 454 T4 1,5kW P/R	1400	5,67	3,26	1,5	3.600	58	85
501505054	MBZM 503 T4 2,2kW P/R	1430	8,07	4,64	2,2	4.680	57	112
501505056	MBZM 504 T4 3kW P/R	1430	10,7	6,17	3	5.400	61	117
501505659	MBZM 561 T4 4kW P/R	1440	14,5	8,32	4	6.120	62	156
501505661	MBZM 562 T4 5,5kW P/R	1440	-	10,5	5,5	7.200	63	177
501506363	MBZM 631 T4 7,5kW P/R	1440	-	14,1	7,5	7.920	64	202
501506349	MBZM 632 T4 11kW P/R	1460	-	21,2	11	10.080	66	250
501507149	MBZM 711 T4 11kW P/R	1460	-	21,2	11	12.600	68	358
501507152	MBZM 712 T4 15kW P/R	1460	-	29,8	15	12.600	69	370
501508053	MBZM 801 T4 18,5kW P/R	1465	-	35,6	18,5	19.800	71	526
501508057	MBZM 802 T4 30kW P/R	1475	-	56,3	30	21.600	72	639
501509058	MBZM 901 T4 37kW P/R	1475	-	69,2	37	28.800	75	782
501509060	MBZM 902 T4 45kW P/R	1475	-	80,7	45	28.800	75	817
501510062	MBZM 1001 T4 55kW P/R	1480	-	97,1	55	36.000	76	1083
501510064	MBZM 1002 T4 75kW P/R	1480	-	133	75	42.120	78	1227



MANUFACTURING FEATURES

- Reinforced rolling steel sheet housings with epoxy powder finishing coat.
- Reinforced high efficiency backward curved impeller.
- Standard asynchronous squirrel-cage motor with IP55 protection and Class F insulation.
- Manufactured with standard voltages: 230/400V 50Hz in three phase motors up to 4kW, and 400/690V 50Hz for higher powers.
- Standard orientation LG270.

APPLICATIONS

Designed for inline installation, they are suitable for:

- Industrial applications, air extraction or injection.
- Cooling of machines and parts.
- Clean and slightly dusty air transport.
- Exhaust after filters, separators and cyclones.
- Pneumatic transport.
- Maximum working temperature: Carried Air 130°C, Environment: 60°C.

UNDER REQUEST

- 60Hz fans and special voltages.
- 2 speed motor.
- Fans for air working temperatures up to 250°C (depending on the model).
- Hot-dipped galvanised fans.
- Orientations: LGo, LG45, LG90, LG135, LG180, LG225, LG315, RDo, RD45, RD90, RD135, RD180, RD225, RD270, RD315.

THREE PHASE RANGE

Code	Model	Rated R.P.M.	Rated Curr. (A)		Rated Power kW	Air Flow m³/h	Sound dB (A)	Weight Kg
			230V	400V				
243310106	MBR 31/10 T2 1.1kW	2800	4,05	2,33	1,1	4.800	68	55
243350106	MBR 35/11 T2 2.2kW	2800	7,97	4,58	2,2	6.660	71	67
243410106	MBR 40/12 T2 3kW	2870	10,3	5,92	3	8.500	74	82
243400106	MBR 40/12 T4 0.75kW	1390	2,83	1,63	0,75	5.640	59	71
243450106	MBR 45/14 T4 1.1kW	1400	4,33	2,49	1,1	7.200	62	90
243510106	MBR 50/16 T4 1.5kW	1400	5,67	3,26	1,5	9.500	64	74
243570106	MBR 56/18 T4 3kW	1430	10,7	6,17	3	13.500	71	97
243650106	MBR 63/20 T4 5.5kW	1440	-	10,5	5,5	19.000	72	155
243730106	MBR 71/22 T4 7.5kW	1440	-	14,1	7,5	25.500	77	256
243500106	MBR 50/16 T6 0.75kW	910	3,39	1,95	0,75	7.100	54	69
243560106	MBR 56/18 T6 1.5kW	940	6,45	3,71	1,5	9.500	62	89
243640106	MBR 63/20 T6 1.5kW	940	6,45	3,71	1,5	12.000	62	113
243720106	MBR 71/22 T6 3kW	960	12,7	7,3	3	17.000	69	205
243630106	MBR 63/20 T8 1.1kW	710	5,93	3,41	1,1	8.940	57	102
243710106	MBR 71/22 T8 1.5kW	710	7,11	4,09	1,5	12.440	62	180



MANUFACTURING FEATURES

- Reinforced rolling steel sheet housings completely welded (internally and externally) with epoxy powder finishing coat.
- Reinforced high efficiency backward curved impeller.
- Standard asynchronous squirrel-cage motor with IP55 protection and Class F insulation.
- Manufactured with standard voltages: 230V 50Hz in single phase motors and 230/400V 50Hz in three phase motors up to 4kW, and 400/690V 50Hz for higher powers.
- Standard orientation LG270.

APPLICATIONS

Designed for inline installation, they are suitable for:

- Hot air exhaust in ovens or facilities with high temperatures.
- Clean and slightly dusty air transport.
- Maximum working temperature: Carried Air up to 250°C, Environment: single phase 50°C, three phase 60°C.

UNDER REQUEST

- 2 speed motors.
- Orientations: LGo, LG90, LG180.

SINGLE PHASE RANGE

Code	Model	Rated R.P.M.	Rated Current (A) 230V	Rated Power kW	Air Flow m³/h	Sound dB (A)	Weight Kg
243400143	MBRC 40/12 M4 0.75kW	1400	5,21	0,75	5.640	59	71
243450143	MBRC 45/14 M4 1.1kW	1400	7,45	1,1	7.000	62	90
243510143	MBRC 50/16 M4 1.5kW	1400	9,83	1,5	9.500	64	116
243500143	MBRC 50/16 M6 0.75kW	900	4,9	0,75	7.100	54	116

THREE PHASE RANGE

Code	Model	Rated R.P.M.	Rated Current (A)		Rated Power kW	Air Flow m³/h	Sound dB (A)	Weight Kg
			230V	400V				
243310146	MBRC 31/10 T2 1.1kW	2800	4,05	2,33	1,1	4.800	68	42
243350146	MBRC 35/11 T2 2.2kW	2800	7,97	4,58	2,2	6.660	71	55
243410146	MBRC 40/12 T2 3kW	2870	10,3	5,92	3	8.500	74	98
243400146	MBRC 40/12 T4 0.75kW	1390	2,83	1,63	0,75	5.640	59	71
243450146	MBRC 45/14 T4 1.1kW	1400	4,33	2,49	1,1	7.000	62	90
243510146	MBRC 50/16 T4 1.5kW	1400	5,67	3,26	1,5	9.500	64	116
243570146	MBRC 56/18 T4 3kW	1430	10,7	6,17	3	13.500	71	150
243650146	MBRC 63/20 T4 5.5kW	1440	-	10,5	5,5	19.000	72	220
243730146	MBRC 71/22 T4 7.5kW	1440	-	14,1	7,5	25.500	78	316
243500146	MBRC 50/16 T6 0.75kW	910	3,39	1,95	0,75	7.100	54	116
243560146	MBRC 56/18 T6 1.5kW	940	6,45	3,71	1,5	9.500	62	142
243640146	MBRC 63/20 T6 1.5kW	940	6,45	3,71	1,5	12.000	62	208
243720146	MBRC 71/22 T6 3kW	960	12,7	7,3	3	17.000	69	294



MANUFACTURING FEATURES

- Fan made of Fe360 sheet. Fully welded or joined housing.
- High efficiency single inlet backward curved impeller, made of Fe360 sheet statically and dynamically balanced.
- The fan paint finish is a Qualicoat polyester powder coating stoved at 200°C, with an average film thickness of 70 microns.
- Average heat resistance of coating is 180°C with peaks of 200°C.
- Impellers are painted with epoxy primer that resists temperatures up to 300°C.
- Standard asynchronous squirrel-cage motor with IP-55 protection and rated class F insulation.
- Standard voltages 230V 50Hz for single phase motors, 230/400V 50Hz for three phase, motors up to 4kW and 400/690V 50Hz for higher powers.
- Standard orientation LG270.
- Allows you to vary the orientation locally at models from 250 to 630.
- In sizes ranging from 710 to 1400, the orientation is fixed.

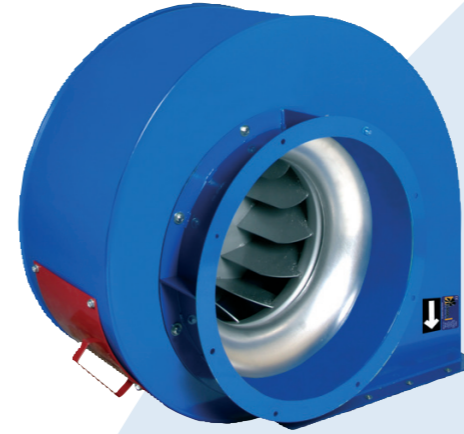
APPLICATIONS

Designed for inline installation, they are suitable for:

- Industrial applications, air extraction or injection.
- Cooling of machines and parts.
- Clean and slightly dusty air transport.
- Exhaust after filters, separators and cyclones.
- Pneumatic transport.
- Maximum working temperature: Carried Air 130°C, Environment: 60°C.

THREE PHASE RANGE

Code	Model	Rated R.P.M.	Rated Current (A)		Rated Power kW	Air Flow m³/h	Sound dB (A)	Weight Kg
			230V	400V				
501602516	MBRL 250 T2 0.55kW	2800	2,23	1,29	0,55	2,520	55	37
501602818	MBRL 280 T2 1.1kW	2800	4,05	2,33	1,1	3,600	60	45
501603127	MBRL 311 T2 2.2kW	2800	7,97	4,58	2,2	5,400	61	57
501603529	MBRL 351 T2 3kW	2870	10,3	5,92	3	7,200	65	80
501604032	MBRL 401 T2 4kW	2890	13,3	7,63	4	6,120	66	95
501604034	MBRL 402 T2 5.5kW	2900	-	10,6	5,5	10,080	68	116
501604536	MBRL 451 T2 7.5kW	2900	-	14,1	7,5	12,600	72	124
501604521	MBRL 452 T2 11kW	2930	-	20,8	11	16,200	73	161
501605024	MBRL 501 T2 15kW	2930	-	27,4	15	18,000	74	187
501605026	MBRL 502 T2 18.5kW	2935	-	34,4	18,5	21,600	76	196
501603140	MBRL 312 T4 0.18kW	1400	1,07	0,62	0,18	2,520	44	43
501603542	MBRL 352 T4 0.37kW	1400	1,86	1,07	0,37	3,600	48	65
501604044	MBRL 403 T4 0.75kW	1390	2,83	1,63	0,75	4,320	54	75
501604544	MBRL 453 T4 0.75kW	1390	2,83	1,63	0,75	4,680	54	89
501604545	MBRL 454 T4 1.1kW	1400	4,33	2,49	1,1	5,400	56	94
501605046	MBRL 503 T4 1.5kW	1400	5,67	3,26	1,5	9,000	58	123
501605054	MBRL 504 T4 2.2kW	1430	8,07	4,64	2,2	10,800	58	130
501605656	MBRL 561 T4 3kW	1430	10,7	6,17	3	12,600	56	153
501605659	MBRL 562 T4 4kW	1440	14,5	8,32	4	16,200	64	158
501606361	MBRL 631 T4 5.5kW	1440	-	10,5	5,5	19,800	65	202
501606363	MBRL 632 T4 7.5kW	1440	-	14,1	7,5	21,600	67	214
501607149	MBRL 711 T4 11kW	1460	-	21,2	11	25,200	69	315
501607152	MBRL 712 T4 15kW	1460	-	29,8	15	32,400	70	326
501608053	MBRL 801 T4 18.5kW	1465	-	35,6	18,5	39,600	72	465
501608055	MBRL 802 T4 22kW	1470	-	40,1	22	36,000	73	484
501609058	MBRL 901 T4 37kW	1475	-	69,2	37	54,000	75	840
501609060	MBRL 902 T4 45kW	1475	-	80,7	45	61,200	76	847
501610062	MBRL 1001 T4 55kW	1480	-	97,1	55	54,000	72	1105
501610064	MBRL 1002 T4 75kW	1480	-	133	75	86,400	79	1278
501605070	MBRL 505 T6 0.37kW	900	2,2	1,27	0,37	3,600	44	115
501605071	MBRL 506 T6 0.55kW	900	3	1,8	0,55	6,120	51	117
501605672	MBRL 563 T6 0.75kW	910	3,39	1,95	0,75	7,920	54	141
501605673	MBRL 564 T6 1.1kW	910	4,83	2,78	1,1	9,000	54	145
501606374	MBRL 633 T6 1.5kW	940	6,45	3,71	1,5	12,600	55	173
501606378	MBRL 634 T6 2.2kW	940	10,3	5,94	2,2	14,400	56	180
501607180	MBRL 713 T6 3kW	960	12,7	7,3	3	16,200	59	276
501607183	MBRL 714 T6 4kW	960	16,5	9,46	4	21,600	61	286
501608085	MBRL 803 T6 5.5kW	960	-	12,8	5,5	25,200	62	367
501608087	MBRL 804 T6 7.5kW	965	-	15,2	7,5	28,800	65	397
501609075	MBRL 903 T6 11kW	970	-	22,6	11	36,000	68	556
501609076	MBRL 904 T6 15kW	970	-	27,7	15	39,600	69	658
501610077	MBRL 1003 T6 18.5kW	975	-	35,7	18,5	46,800	69	879
501610079	MBRL 1004 T6 22kW	975	-	42,3	22	54,000	67	885
501611281	MBRL 1121 T6 30kW	980	-	54,4	30	68,400	71	1153
501611282	MBRL 1122 T6 37kW	980	-	66,8	37	75,600	67	1242
501612586	MBRL 1251 T6 55kW	980	-	102	55	97,200	74	1739
501612588	MBRL 1252 T6 75kW	985	-	138	75	108,000	76	1960
501614106	MBRL 1401 T6 90kW	985	-	164	90	122,400	78	2342
501614107	MBRL 1402 T6 110kW	990	-	199	110	140,000	78	2363



MANUFACTURING FEATURES

- Rolling steel sheet housing.
- Fully welded or joined housing.
- Flanged inlet to allow direct join in the paint shop outlet.
- Inspection door included.
- Cabin fans supplied, if requested, with sparkproof inlet.
- High efficiency backward curved impeller manufactured in rolled steel sheet with epoxy powder finishing coat.
- Epoxy powder finishing coat.
- Standard asynchronous squirrel-cage motor with IP55 protection and Class F insulation.
- Manufactured with standard voltages: 230/400V 50Hz.
- Sparkproof inlet flange.
- Standard orientation LG270.

APPLICATIONS

Designed to be fixed at the inlet double flange, with motor in vertical position.

- Industrial applications, air extraction or injection.
- Cooling of machines and parts.
- Clean and slightly dusty air transport.
- Exhaust after filters in paint booths.
- Exhaust after filters, separators and cyclones.
- Pneumatic transport.
- Maximum working temperature: Carried Air 130°C, Environment: 60°C.

UNDER REQUEST

- 2 speed motor.
- ATEX certified
- Hot-dipped galvanised or stainless steel fans.
- Orientations: RDo, RD45, RD90, RD135, RD180, RD225, RD270, RD315, LGo, LG45, LG90, LG135, LG180. LG225, LG315

THREE PHASE RANGE

Code	Model	Rated R.P.M.	Rated Current (A)		Rated Power kW	Air Flow m³/h	Sound dB (A)	Weight Kg
			230V	400V				
501704545	MBRLP 454 T4 1.1kW	1400	4,33	2,49	1,1	5,400	56	94
501705046	MBRLP 503 T4 1.5kW	1400	5,67	3,26	1,5	9,000	58	123
501705656	MBRLP 561 T4 3kW	1430	10,7	6,17	3	12,600	63	153
501705659	MBRLP 562 T4 4kW	1440	14,5	8,32	4	16,200	64	158
501706361	MBRLP 631 T4 5.5kW	1440	-	10,5	5,5	19,800	65	202
501706363	MBRLP 632 T4 7.5kW	1440	-	14,1	7,5	21,600	67	214
501706374	MBRLP 633 T6 1.5kW	940	6,45	3,71	1,5	12,600	55	173
501706378	MBRLP 634 T6 2.2kW	940	10,3	5,94	2,2	14,400	56	180
501707180	MBRLP 713 T6 3kW	960	12,7	7,3	3	16,200	59	276
501707183	MBRLP 714 T6 4kW	960	16,5	9,46	4	21,600	61	286



MANUFACTURING FEATURES

- Rolling steel sheet housing. Fully welded or joined housing.
- High efficiency backward curved impeller, made of Fe360 sheet statically and dynamically balanced.
- The fan paint finish is a Qualicoat polyester powder coating stoved at 200°C, with an average film thickness of 70 microns.
- Average heat resistance of coating is 180°C with peaks of 200°C.
- Impellers are painted with epoxy primer that resists temperatures up to 300°C.
- Standard asynchronous squirrel-cage motor with IP-55 protection and rated class F insulation.
- Manufactured with standard voltages: 230V 50Hz for single phase motors, 230/400V 50Hz for three phase, motors up to 4kW and 400/690V 50Hz for higher powers.
- Standard orientation LG270.
- Allows you to vary the orientation on models from 250 to 630.
- In sizes ranging from 710 to 1400, the orientation is fixed.

APPLICATIONS

Designed for inline installation, they are suitable for:

- Industrial applications, air extraction or injection.
- Cooling of machines and parts.
- Transport of dusty air and small loads of pellet materials.
- Exhaust after filters, separators and cyclones.
- Pneumatic transport.
- Maximum working temperature: Carried Air 130°C, Environment: 60°C.

UNDER REQUEST

- 60Hz fans and special voltages. & 2 speed motors.
- ATEX certified
- Fans for air working temperatures up to 250°C (depending on the model).
- Hot-dipped galvanised or stainless steel fans.
- Orientations: RDO, RD45, RD90, RD135, RD180, RD225, RD270, RD315, LGO, LG45, LG90, LG135, LG180. LG225, LG315.

THREE PHASE RANGE

Code	Model	Rated R.P.M.	Rated Current (A)		Rated Power kW	Air Flow m³/h	Sound dB (A)	Weight Kg
			230V	400V				
501802213	MBRM 220 T2 0,18kW	2800	0,87	0,51	0,18	790	47	18
501802514	MBRM 251 T2 0,25kW	2800	1,12	0,65	0,25	1.080	49	24
501802515	MBRM 252 T2 0,37kW	2800	1,58	0,91	0,37	1.370	51	26
501802816	MBRM 281 T2 0,55kW	2800	2,23	1,29	0,55	1.620	53	30
501802817	MBRM 282 T2 0,75kW	2800	2,75	1,58	0,75	1.800	54	35
501803118	MBRM 311 T2 1,1kW	2800	4,05	2,33	1,1	2.520	57	42
501803119	MBRM 312 T2 1,5kW	2800	5,46	3,14	1,5	2.520	57	45
501803519	MBRM 351 T2 1,5kW	2800	5,46	3,14	1,5	2.160	55	66
501803527	MBRM 352 T2 2,2kW	2800	7,97	4,58	2,2	3.960	59	70
501804029	MBRM 401 T2 3kW	2870	10,3	5,92	3	5.400	63	85
501804032	MBRM 402 T2 4kW	2890	13,3	7,63	4	6.120	64	93
501804534	MBRM 451 T2 5,5kW	2900	-	10,6	5,5	7.920	66	115
501804536	MBRM 452 T2 7,5kW	2900	-	14,1	7,5	7.920	66	118
501805021	MBRM 501 T2 11kW	2930	-	20,8	11	10.800	70	175
501805024	MBRM 502 T2 15kW	2930	-	27,4	15	10.800	71	180
501805626	MBRM 561 T2 18,5kW	2935	-	34,4	18,5	16.200	73	220
501805628	MBRM 562 T2 22kW	2940	-	39,8	22	16.200	73	276
501805045	MBRM 503 T4 1,1kW	1400	4,33	2,49	1,1	4.680	55	100
501805046	MBRM 504 T4 1,5kW	1400	5,67	3,26	1,5	5.400	56	106
501805654	MBRM 563 T4 2,2kW	1430	8,07	4,64	2,2	7.200	58	128
501805656	MBRM 564 T4 3kW	1430	10,7	6,17	3	7.920	59	136
501806359	MBRM 631 T4 4kW	1440	14,5	8,32	4	10.080	61	190
501806361	MBRM 632 T4 5,5kW	1440	-	10,5	5,5	10.080	64	205
501807163	MBRM 711 T4 7,5kW	1440	-	14,1	7,5	14.400	64	287
501807149	MBRM 712 T4 11kW	1460	-	21,2	11	18.000	66	338
501808052	MBRM 801 T4 15kW	1460	-	29,8	15	21.600	67	504
501808053	MBRM 802 T4 18,5kW	1465	-	35,6	18,5	25.200	68	512
501809057	MBRM 901 T4 30kW	1475	-	56,3	30	32.400	71	684
501809058	MBRM 902 T4 37kW	1475	-	69,2	37	32.400	72	767
501810060	MBRM 1001 T4 45kW	1475	-	80,7	45	43.200	72	963
501810062	MBRM 1002 T4 55kW	1480	-	97,1	55	46.800	74	1081
501811264	MBRM 1121 T4 75kW	1480	-	133	75	61.200	76	1445
501811266	MBRM 1122 T4 90kW	1485	-	158	90	68.400	77	1486
501808083	MBRM 803 T6 4kW	960	-	9,46	4	14.400	60	391
501808085	MBRM 804 T6 5,5kW	960	-	12,8	5,5	16.200	60	395
501809087	MBRM 903 T6 7,5kW	965	-	15,2	7,5	21.600	62	511
501809075	MBRM 904 T6 11kW	970	-	22,6	11	21.600	64	531
501810076	MBRM 1003 T6 15kW	970	-	27,7	15	28.800	66	743
501810077	MBRM 1004 T6 18,5kW	975	-	35,7	18,5	32.400	67	850
501811279	MBRM 1123 T6 22kW	975	-	42,3	22	39.600	67	955
501811281	MBRM 1124 T6 30kW	980	-	54,4	30	46.800	69	1156
501812582	MBRM 1251 T6 37kW	980	-	66,8	37	54.000	71	1430
501812584	MBRM 1252 T6 45kW	980	-	84,8	45	61.200	72	1915
501814086	MBRM 1401 T6 55kW	980	-	102	55	76.500	73	1850
501814088	MBRM 1402 T6 75kW	985	-	138	75	86.400	75	2346



MANUFACTURING FEATURES

- Fan made of Fe360 sheet. Fully welded or joined housing.
- High efficiency backward curved impeller made of Fe360 sheet statically and dynamically balanced.
- The fan paint finish is a Qualicoat polyester powder coating stoved at 200°C, with an average film thickness of 70 microns. Average heat resistance of coating is 180°C with peaks of 200°C.
- Impellers are painted with epoxy primer that resists temperatures up to 300°C.
- Standard asynchronous squirrel-cage motor with IP-55 protection and rated class F insulation.
- Manufactured with standard voltages: 230V 50Hz for single phase motors, 230/400V 50Hz for three phase motors up to 4kW, and 400/690V 50Hz for higher powers.
- Standard orientation LG270.
- Allows you to vary the orientation locally at models from 250 to 630.
- In sizes ranging from 710 to 1400, the orientation is fixed.

APPLICATIONS

Designed for inline installation, they are suitable for:

- Industrial applications, air extraction or injection.
- Cooling of machines and parts.
- Transport of dusty air and small loads of pellet materials.
- Exhaust after filters, separators and cyclones.
- Pneumatic transport.
- Maximum working temp: Carried Air 130°C, Environment: 60°C.

UNDER REQUEST

- 60Hz fans and special voltages. & 2 speed motors.
- ATEX certified
- Fans for air working temperatures up to 250°C (depending on the model).
- Hot-dipped galvanised or stainless steel fans.
- Special motors for frequency regulation (recommended for motor sizes IEC280 and larger).
- Orientations: RDO, RD45, RD90, RD135, RD180, RD225, RD270, RD315, LGO, LG45, LG90, LG135, LG180. LG225, LG315.

THREE PHASE RANGE

Code	Model	Rated R.P.M.	Rated Current (A)		Rated Power kW	Air Flow m³/h	Sound dB (A)	Weight Kg
			230V	400V				
501902515	MBRU 250 T2 0,37kW	2800	1,58	0,91	0,37	1.080	49	28
501902816	MBRU 280 T2 0,55kW	2800	2,23	1,29	0,55	1.440	51	30
501903118	MBRU 310 T2 1,1kW	2800	4,05	2,33	1,1	2.160	52	42
501903527	MBRU 350 T2 2,2kW	2800	7,97	4,58	2,2	2.880	55	62
501904032	MBRU 400 T2 4kW	2890	13,3	7,63	4	4.320	58	90
501904536	MBRU 450 T2 7,5kW	2900	-	14,1	7,5	7.920	63	115
501905021	MBRU 501 T2 11kW	2930	-	20,8	11	9.000	63	175
501905624	MBRU 561 T2 15kW	2930	-	27,4	15	12.600	66	217
501905626	MBRU 562 T2 18,5kW	2935	-	34,4	18,5	12.600	64	228
501906330	MBRU 631 T2 30kW	2950	-	56,6	30	21.600	71	438
501906331	MBRU 632 T2 37kW	2955	-	66,7	37	25.200	71	443
501907135	MBRU 711 T2 55kW	2965	-	95	55	28.800	71	625
501907137	MBRU 712 T2 75kW	2965	-	130	75	36.000	73	760
501908038	MBRU 801 T2 90kW	2970	-	156	90	28.800	72	904
501908022	MBRU 802 T2 110kW	2975	-	188	110	36.000	75	1046
501905045	MBRU 502 T4 1,1kW	1400	4,33	2,49	1,1	3.600	51	100
501905654	MBRU 563 T4 2,2kW	1430	8,07	4,64	2,2	6.120	53	143
501906359	MBRU 633 T4 4kW	1440	14,5	8,32	4	10.080	55	190
501907161	MBRU 713 T4 5,5kW	1440	-	10,5	5,5	10.080	56	275
501907163	MBRU 714 T4 7,5kW	1440	-	14,1	7,5	14.400	60	288
501908049	MBRU 803 T4 11kW	1460	-	21,2	11	16.200	58	418
501908052	MBRU 804 T4 15kW	1460	-	29,8	15	25.200	62	432
501909053	MBRU 901 T4 18,5kW	1465	-	35,6	18,5	18.000	59	590
501909057	MBRU 902 T4 30kW	1475	-	56,3	30	32.400	65	687
501910058	MBRU 1001 T4 37kW	1475	-	69,2	37	39.600	66	933
501910060	MBRU 1002 T4 45kW	1475	-	80,7	45	43.200	66	975
501911262	MBRU 1121 T4 55kW	1480	-	97,1	55	54.000	65	1210
501911264	MBRU 1122 T4 75kW	1480	-	133	75	61.200	67	1390
501912550	MBRU 1251 T4 110kW	1485	-	194	110	76.500	72	1840
501912551	MBRU 1252 T4 132kW	1485	-	230	132	85.000	73	1875
501914105	MBRU 1401 T4 200kW	1489	-	351	200	110.000	74	2336
501914108	MBRU 1402 T4 250kW	1490	-	428	250	110.000	75	2336
501908083	MBRU 805 T6 4kW	960	16,5	9,46	4	14.400	54	390
501909087	MBRU 903 T6 7,5kW	965	-	15,2	7,5	21.600	55	504
501910075	MBRU 1003 T6 11kW	970	-	22,6	11	25.200	59	684
501910076	MBRU 1004 T6 15kW	970	-	27,7	15	28.800	59	759
501911277	MBRU 1123 T6 18,5kW	975	-	35,7	18,5	32.400	62	935
501911279	MBRU 1124 T6 22kW	975	-	42,3	22	39.600	62	956
501912581	MBRU 1253 T6 30kW	980	-	54,4	30	46.800	62	1283
501912582	MBRU 1254 T6 37kW	980	-	66,8	37	54.000	64	1378
501914084	MBRU 1403 T6 45kW	980	-	84,8	45	61.200	61	2150
501914088	MBRU 1404 T6 75kW	985	-	138	75	76.500	66	2336



MANUFACTURING FEATURES

- Fan made of Fe360 sheet.
- The fan paint finish is a Qualicoat polyester powder coating stoved at 200°C, with an average film thickness of 70 microns.
- Average heat resistance of coating is 180°C with peaks of 200°C.
- Fully welded housing.
- High efficiency backward curved impeller made of Fe360 sheet statically and dynamically balanced.
- Impellers are painted with epoxy primer that resists temperatures up to 300°C.
- Standard asynchronous squirrel-cage motor with IP55 protection and class F insulation.
- Manufactured with standard voltages: 230V/400V 50Hz in single phase motors and 230/400V 50Hz in three phase motors up to 4kW and 400/690V 50Hz for higher powers.
- Standard orientation LG270.
- Allows adjustment to the orientation on models 400 to 630.
- Models sizes from 710 to 1400 size the orientation is fixed.

APPLICATIONS

- Designed for inline installation, they are suitable for:
- Industrial applications, extraction or injection of air.
 - Cooling of machines and parts.
 - Clean and slightly dusty air transport.
 - Exhaust after filters, separators and cyclones.
 - Pneumatic transport.
 - Maximum working temperature: carried air: 130°C, ambient: 60°C.

UNDER REQUEST

- 60Hz fans and special voltages.
- 2 speed motors.
- ATEX certified
- Fan for air working temperatures up to 250°C with R/R (cooling impeller).
- Hot dip galvanised or stainless steel fans.
- Orientation: RDO, RD45, RD90, RD135, RD180, RD225, RD270, RD315, LGO, LG45, LG90, LG135, LG180, LG225, LG315.

THREE PHASE RANGE

Code	Model	Rated R.P.M.	Rated Current (A)		Rated Power kW	Air Flow m³/h	Sound dB (A)	Weight Kg
			230V	400V				
502004027	MBGR 401 T2 2.2kW	2800	7,97	4,58	2,2	2.880	56	73
502004029	MBGR 402 T2 3kW	2870	10,3	5,92	3	3.600	60	81
502004532	MBGR 451 T2 4kW	2890	13,3	7,63	4	4.320	62	107
502004534	MBGR 452 T2 5,5kW	2900	-	10,6	5,5	5.400	67	136
502005036	MBGR 501 T2 7,5kW	2900	-	14,1	7,5	7.200	71	145
502005021	MBGR 502 T2 11kW	2930	-	20,8	11	8.640	73	210
502005621	MBGR 561 T2 11kW	2930	-	20,8	11	8.640	71	227
502005624	MBGR 562 T2 15kW	2930	-	27,4	15	12.600	75	240
502006328	MBGR 631 T2 22kW	2940	-	39,8	22	14.400	77	315
502006330	MBGR 632 T2 30kW	2950	-	56,6	30	18.000	78	400
502007131	MBGR 711 T2 37kW	2955	-	66,7	37	19.800	82	492
502007133	MBGR 712 T2 45kW	2960	-	78	45	21.600	83	602
502008037	MBGR 801 T2 75kW	2965	-	130	75	28.800	85	800
502008038	MBGR 802 T2 90kW	2970	-	156	90	36.000	86	860
502009023	MBGR 901 T2 132kW	2980	-	223	132	36.000	90	1065
502009025	MBGR 902 T2 160kW	2980	-	269	160	46.800	92	1090
502005646	MBGR 563 T4 1,5kW	1400	5,67	3,26	1,5	4.680	54	165
502005654	MBGR 564 T4 2,2kW	1430	8,07	4,64	2,2	5.400	56	169
502006356	MBGR 633 T4 3kW	1430	10,7	6,17	3	6.120	58	180
502006359	MBGR 634 T4 4kW	1440	14,5	8,32	4	7.920	60	190
502007159	MBGR 713 T4 4kW	1440	14,5	8,32	4	9.360	62	249
502007161	MBGR 714 T4 5,5kW	1440	-	10,5	5,5	10.800	65	272
502008063	MBGR 803 T4 7,5kW	1440	-	14,1	7,5	10.800	65	370
502008049	MBGR 804 T4 11kW	1460	-	21,2	11	18.000	69	415
502009052	MBGR 903 T4 15kW	1460	-	29,8	15	19.800	68	495
502009055	MBGR 904 T4 22kW	1470	-	40,1	22	25.200	74	576
502010057	MBGR 1001 T4 30kW	1475	-	56,3	30	28.800	76	794
502010058	MBGR 1002 T4 37kW	1475	-	69,2	37	36.000	77	893
502011260	MBGR 1121 T4 45kW	1475	-	80,7	45	36.000	79	1032
502011262	MBGR 1122 T4 55kW	1480	-	97,1	55	46.800	81	1132
502012564	MBGR 1251 T4 75kW	1480	-	133	75	54.000	83	1442
502012550	MBGR 1252 T4 110kW	1485	-	194	110	72.000	85	1770
502014051	MBGR 1401 T4 132kW	1485	-	230	132	72.000	87	2150
502014104	MBGR 1402 T4 160kW	1489	-	278	160	90.000	84	2170
502009083	MBGR 905 T6 4kW	960	16,5	9,46	4	10.800	55	441
502009085	MBGR 906 T6 5,5kW	960	-	12,8	5,5	14.400	57	450
502010087	MBGR 1003 T6 7,5kW	965	-	15,2	7,5	18.000	62	613
502010075	MBGR 1004 T6 11kW	970	-	22,6	11	21.600	68	626
502011276	MBGR 1123 T6 15kW	970	-	27,7	15	25.200	67	836
502011277	MBGR 1124 T6 18,5kW	975	-	35,7	18,5	32.400	69	861
502012579	MBGR 1253 T6 22kW	975	-	42,3	22	36.000	72	900
502012581	MBGR 1254 T6 30kW	980	-	54,4	30	46.800	74	1287
502014082	MBGR 1403 T6 37kW	980	-	66,8	37	46.800	77	1819
502014086	MBGR 1404 T6 55kW	980	-	102	55	61.000	77	2058

Additional Information

For additional information on any of our medium pressure centrifugal fans including performance curves, wiring diagrams and dimensions, contact our technical department on 01782 349 430 or email us on sales@axair-fans.co.uk.

Visit our website www.axair-fans.co.uk or follow our social media accounts to stay up to date with the latest news from Axair Fans.

AXAIR

FANS UK LIMITED



Lowfield Drive
Centre 500
Wolstanton
Newcastle-Under-Lyme
ST5 0UU



01782 349430



01782 349439



sales@axair-fans.co.uk



@axairfans



axair-fans-uk-limited



Axair Fans UK Ltd



+AxairfansUKLimited

WWW.AXAIR-FANS.CO.UK

