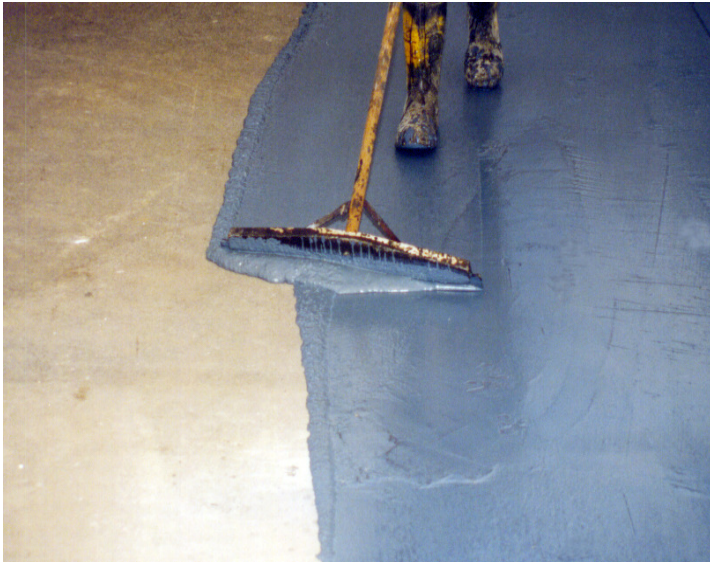


Monoprufe DPM

Surface damp proof membrane



FEATURES

- water based membrane system
- reduces water and water vapour permeability
- designed to accept thin bonded screeds
- compatible with most Ronacrete screed and topping systems
- easy to mix and apply
- quick drying two or three coat application
- non-hazardous, solvent free, low odour
- suitable for use prior to the application of tiles, soft flooring or wood flooring to screeds which are not fully dry

Description

Monoprufe DPM is a liquid applied surface damp proof membrane designed to reduce the passage of water vapour and allow the adhesion of thin bonded and fast drying screeds to concrete which is either not fully dry or does not have a functioning DPM. Monoprufe DPM is also suitable for use prior to the application of tiles, soft flooring or wood flooring to screeds which are not fully dry.

Supplied as a liquid and a powder Monoprufe DPM is applied as a two or three coat membrane

Tests including Moisture Vapour Permeability in accordance with BS3177 have been carried out and show a reduction in vapour transmission to less than 4g/m²/day.

Water Vapour Permeability

2 coats Monoprufe DPM

<4g/m²/day after 7 days

Instructions for Use

Preparation

In all cases the substrate must be sound and have sufficient tensile strength to sustain an adequate bond with the Monoprufe DPM, to prevent debonding caused by vapour pressure and in the case of overlaying with high strength screeds, topping or finishes, to prevent disruption of the substrate during curing or subsequent trafficking

When mechanically abrading surfaces, vacuum blasting is preferable. A heavy surface profile should be avoided in order to minimise the risk of the Monoprufe DPM ponding or not covering high points.

When overlaying with an unbonded screed, surface preparation requires the substrate to be clean, sound and free of contamination including oil and dirt.

Monoprufe DPM

Surface damp proof membrane

Instructions for Use (continued)

If an unbonded screed is being laid on top of Monoprufe DPM, install a separating layer between the Monoprufe DPM and screed to prevent partial adhesion.

Damping

Following surface preparation and before applying Monoprufe DPM the surface must be damped with clean water, allowing water to soak in to the surface and reduce porosity. Excess standing and ponding water must be removed and the surface left damp.

Application

Ensure the Monoprufe DPM is properly mixed and the powder evenly dispersed. Apply by brush or roller on to the damp surface at a minimum coverage rate of 0.7kg per m² per coat, this coverage rate takes no account of substrate texture or profile, usage will be greater on textured or uneven substrates. It is essential to ensure even coverage and to achieve a continuous pinhole free film. Do not overspread the material.

Apply the second (and third coats) as above. Allow the previous coat to dry for not less than 1 hour and not more than 24 hours before applying the second coat. The second coat is applied at 90° to the first. Do not damp between coats. If covering with a bonded screed, or if other finishes are to be applied more than 24 hours after application of the second coat, a third coat must be applied within 24 hours of the application of the second coat. Blind the third coat with kiln dried sand to provide a key. The membrane must be protected at all times against site traffic until it is covered.

Applying Ronacrete bonded screed

Note that when applying a thin bonded screed (eg. Ronafix or RonaScreed) a primer coat of Ronafix & cement or other Ronacrete primer compatible with the screed or topping, must be applied directly on to the dry Monoprufe DPM, before the screed or topping is laid.

Floor Coverings

In line with Codes of Practice subsequent floor coverings should have a vapour permeability of more than 4g/m²/day.

Cleaning Tools and Equipment

Monoprufe DPM is water based. Tools and equipment should be washed with water immediately after use.

Coverage and Estimating Guide

0.7kg of Monoprufe DPM is sufficient for applying 1 coat over an area of 1m². The application rate quoted makes no allowance for substrate texture, thickness variation or wastage.

Packaging


Monoprufe DPM is supplied as a two component material in 10kg packs.

Monoprufe DPM

Surface damp proof membrane

Site Attendance

When on site Ronacrete representatives are able, if asked, to give a general indication of the correct method of installing a Ronacrete product. It is important to bear in mind that Ronacrete Ltd is a manufacturer and not an application contractor and it is therefore the responsibility of the contractor and his employer to ensure he is aware of and implements the correct practices and procedures to ensure the correct installation of the product and that liability for its correct installation lies with the contractor and not with Ronacrete Ltd.


<p>Ronacrete Ltd, Flex Meadow, Harlow Essex, CM19 5TD, UK</p> <p>13 0836-CPR-13/F045</p>
<p>BS EN 1504-2</p> <p>Concrete Repair Surface Protection System</p>
<p>Product: Monoprufe DPM Capillary abs. & perm. to water: W < 0.1kg/m2 .h0.5 Reaction to Fire: Euroclass F Dangerous Substances: Refer to Safety Data Sheet</p>

The information detailed in this leaflet is liable to modification from time to time in the light of experience and of normal product application, and before using, customers are advised to check with Ronacrete Ltd, quoting the reference number, that they possess the latest issue. Any person or company using the product without first making further enquiries as to the suitability of the product for the intended use does so at his own risk, and Ronacrete Ltd can accept no responsibility for the performance of the product, or for any loss or damage arising out of such use.