

EZLink™ Armless Cam and Groove



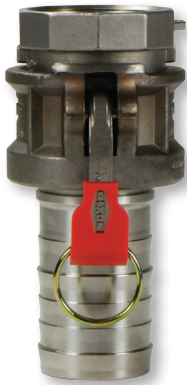
Features:

- automatic couplers push-to-connect providing a reliable connection
- coupler tabs cannot be pushed to disconnect when pressurized to 20 PSI or over
- low profile allows easy connection and disconnection in tight applications
- coupler push tabs can be locked with safety pins and/or zip tie

Specifications:

- maximum working pressure with King Crimp™ ferrules: **250 PSI** (2"), **150 PSI** (3" and 4")
- maximum working pressure with crimp sleeves: **110 PSI**
- maximum working pressure with band clamps: **100 PSI**
- gasket temperature range: **5°F to 180°F (-15°C to 82°C)**

Vent-Lock™ Safety Cam and Groove



Features:

- safety release cam and groove couplings permit the release of static pressure when disconnecting hose assemblies
- venting system protects operator from being sprayed with hazardous or non-hazardous fluids or solids

Specifications:

- rated to **250 PSI**, recommendation based on the use of mating Dixon™ L-style fittings at ambient temperature **70°F (21°C)** with standard Buna-N seal installed, for use at elevated temperature or other unusual operating conditions, consult Dixon™
 - 1", 1½" and 2" sizes have a maximum working pressure of **250 PSI**
 - 3" maximum working pressure **150 PSI** with King Crimp™ ferrules, crimp sleeves and bands at **125 PSI**
- does not interchange with standard cam & groove products use only with Vent-Lock™ L-style fittings



Dixon® Cam and Groove



Features:

- precision machined to rigid tolerances
- durable stainless steel cam arm pins will not rust or bind, providing greater strength and safety
- recess holds gasket firmly in place - ensures proper placement
- long shank design allows proper banding, thus eliminating the major cause of hose damage

Specifications:

- Specifications and pressure ratings differ depending on size and type, see Dixon website for more information.

Boss-Lock™ Cam and Groove

Features:

- Cast-in lugs allow safety clips to be attached once the lugs are passed through slots in the special cam lever arms providing a patented safety feature. The clips prevent the coupler from being unlocked until they are removed, providing a positive locking action.
- Boss-Lock™ investment stainless steel cam arms are guaranteed! Should you break a Boss-Lock™ investment stainless steel cam arm, return it to the nearest warehouse for a free replacement.
- The pull ring safety clip simplifies the locking action on Boss-Lock™ couplers. No more inserting clips or dangling lanyards, just a twist and it's locked.

Specifications:

- Specifications and pressure ratings differ depending on size and type, see Dixon website for more information.



EZ Boss-Lock™ Cam and Groove

Features:

- no more fumbling with clamps, wire, clips or pins, just close the handles and the locking mechanism is engaged
- ergonomic and extremely easy to open, the release lever is under your thumb when you want to open the fitting
- resistant to accidental disconnection when being dragged; the release lever opens in the direction opposite to the cam arm, so movements that can open the release lever also can close the cam arm
- if the rotating lever is not flush with the handle, it is not properly engaged
- no sliding pins to jam or pop open
- rotating action helps keep the locking device free of debris
- EZ Boss-Lock™ investment stainless steel cam arms are guaranteed! Should you break a EZ Boss-Lock™ investment stainless steel cam arm, return it to the nearest warehouse for a free replacement.
- can be supplied with custom shanks, also available with swaged and PF shanks for hard to couple chemical hoses
- small OD makes it easy to insert into the hose tubes on tank trucks and to use in restricted spaces
- assemblies can be retrofitted onto undamaged stainless steel Boss-Lock™ allowing you to protect your investment in stainless steel Boss-Lock™ couplings while you upgrade

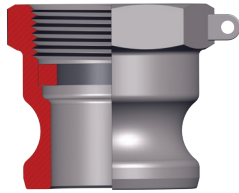
Specifications:

- Specifications and pressure ratings differ depending on size and type, see Dixon website for more information.

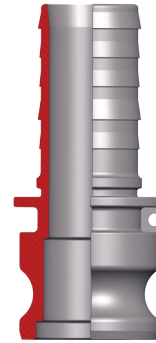


Cam and Groove Configurations

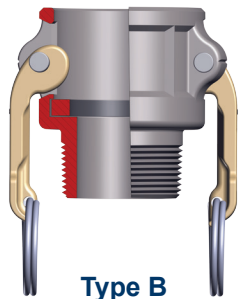
Configurations are representative of the Dixon® line of cam & groove.



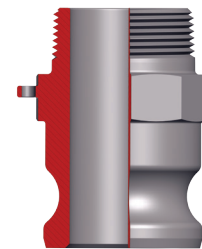
Type A
female NPT x male adapter



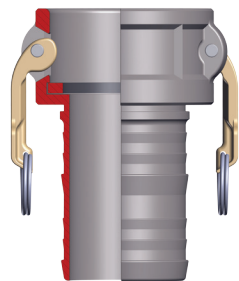
Type E
male adapter x hose shank



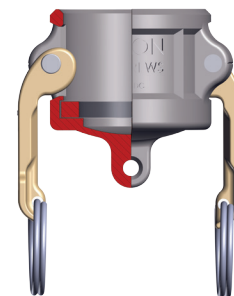
Type B
female coupler x male NPT



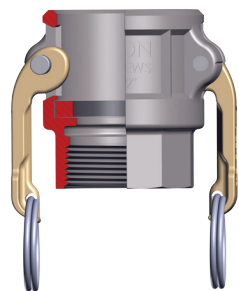
Type F
male NPT x male adapter



Type C
female coupler x hose shank



Type DC¹
dust cap



Type D
female coupler x female NPT



Type DP¹
dust plug

¹ Dust caps and dust plugs are **not** to be used in pressure applications for safety and environmental reasons.

Under no circumstances should cam & groove couplings be used for compressed air or steam service!

