

## INTELLIGENT LIVE MONITORING UNIT

*A PowerPak Accessory*



The Intelligent Live Monitoring Unit has been designed to accept power from a standard Revader PowerPak, or other 12-24V DC battery pack and provide live video streams from any standard PoE IP or ANPR Camera (30W max) via 4G

When powered from a power source, it can:

- ◆ Switch power to ON or OFF (sleep mode) with green/red LED indicator.
- ◆ Schedule the power ON and OFF times.
- ◆ Provide an indication of battery status via a web browser.
- ◆ Send warning emails prior to battery exhaustion.

Housed in an IP66 plastic enclosure, the intelligent interface unit continuously consumes approximately 8W/hr when on, about 2W/hr in sleep mode and zero consumption when disconnected.

**SIM Card :** Requires a fixed IP data (4G)+SMS SIM card.  
Can be provided by Revader.

**Connectivity:** IP68 3 pin power in; 0.3m PoE cable with IP67 inline RJ45 coupler;  
Wi-Fi/4G Antenna.

**Weight:** 1kg approx.

The unit can be attached directly to the side of the **PowerPak**, the **Revader EasyFit** bracket system (Part No. 60500) or other solid support.

This product is also available in a LITE version with a remote power on/off capability only at a reduced cost.

**Intelligent Live Monitoring Unit (ILMU)**

Part No. 62217

**IMLU LITE**

Part No. 62215

**E&OE**  
62217M-04

## INTELLIGENT POWER SWITCH

*A PowerPak Accessory*

The Intelligent Power Switch accepts power from a standard PowerPak or other 12-24V DC battery pack and provides power out at a predetermined factory-set voltage of 5 - 48V DC at 30W (max). Two output voltages can also be accommodated with a combined output of 30W (max).

When powered from a power source, it can:

- ◆ Switch power to ON or OFF (sleep mode) with green/red LED indicator.
- ◆ Schedule power ON and OFF times.
- ◆ Provide an indication of battery status via a web browser.
- ◆ Send warning emails prior to battery exhaustion.

Housed in an IP66 plastic enclosure, the switch continuously consumes approximately 8W/hr when on, approximately 2W/hr in sleep mode and zero consumption when disconnected.

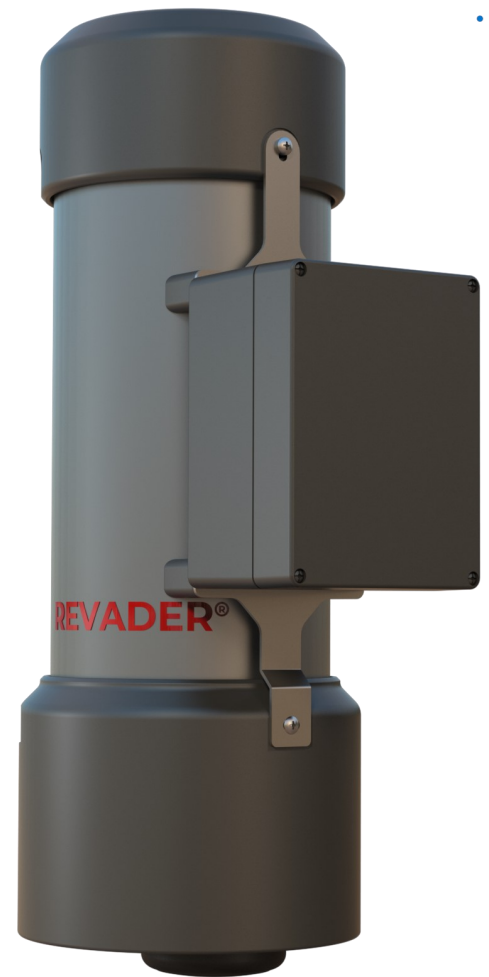
**SIM Card :** Requires a fixed IP data (4G)+SMS SIM card.  
Can be provided by Revader.

**Connectivity:** IP68 3 pin power in; IP68 4 pin power out; WiFi/4G antenna.

**Weight:** 1kg approx.

The unit can be attached directly to the side of the **PowerPak**, the **Revader EasyFit** bracket system (Part No. 60500) or other solid support.

This product is also available in a LITE version with a remote power on/off capability only at a reduced cost.



	<b>Intelligent Power Switch (IPS)</b>	<b>IPS LITE</b>
<b>5V DC - 6A max</b>	Part No. 62218	Part No. 62212
<b>12V DC - 1.5A max</b>	Part No. 62219	Part No. 62213
<b>24V DC - 1.2A max</b>	Part No. 62220	Part No. 62216
<b>48V DC - 0.6A max</b>	Part No. 62221	Part No. 62214

**E&OE**  
62218M-04