

PRODUCT CATALOGUE

Innovative, reliable LiftMaster solutions
give you the selling advantage.



GARAGE DOOR OPENERS
EFFECTIVE JANUARY 2019

LiftMaster

INDEX.

| | |
|---|---|
| LIFTMASTER THE BRAND FOR THE PROFESSIONAL | 3 |
| SMART CONNECTIONS - THE SMART SOLUTION FOR YOUR BUSINESS..... | 3 |
| DESIGN MEETS TECHNOLOGY | 4 |
| CONVINCING PRODUCT FEATURES | 4 |
| QUALITY PROMISE..... | 4 |
| GARAGE DOOR OPENERS WITH MYQ TECHNOLOGY | 5 |
| INNOVATIVE WI-FI TECHNOLOGY | 5 |
| LIFTMASTER WORKS WITH NEST | 5 |

GARAGE DOOR OPENERS

| | |
|--|--------|
| LM3800W..... | 6, 7 |
| LM130EVF..... | 8, 9 |
| LM100EVF..... | 10, 11 |
| LM80EVF..... | 12, 13 |
| LM60EVF..... | 14, 15 |
| LM55EVF..... | 16, 17 |
| EVOLUTION GARAGE DOOR OPENERS OVERVIEW | 18, 19 |
| LM750EVGB..... | 20, 21 |

ACCESSORIES

| | |
|--|------------|
| OVERVIEW C-RAILS | 22, 23 |
| C-RAIL | 24 |
| RAIL EXTENSIONS | 24 |
| REMOTE CONTROLS – CAR KIT CLIP HOLDER..... | 24, 25 |
| WALL CONTROLS | 25 |
| CONVENIENCE DEVICES..... | 26 |
| SAFETY DEVICES | 26, 27, 28 |
| QUICK RELEASES | 29 |
| KEY LOCK DEVICES..... | 29 |
| BATTERY BACK-UP | 29 |
| CANOPY DOOR ARM | 30 |
| RECEIVER..... | 30 |
| OTHERS | 30 |

| | |
|------------------------------------|----|
| SERVICE & CONTACT | 31 |
|------------------------------------|----|

LIFTMASTER.

The brand for the professional.



LiftMaster

LiftMaster is a brand by the Chamberlain Group. As a leading provider of convenience and security products for homes and businesses worldwide, Chamberlain's strong foundation emanates from the millions of products manufactured and sold since the early 1960s. Around the world, there are more Chamberlain openers installed than any other brand.

LiftMaster's residential products offer a broad selection in terms of performance, features, and durability. They are made to suit the expectation of a professional installer to provide excellent service to homeowners.

They are also proven to withstand even the harshest of elements and years of extended use and are available with innovative accessories designed to make home access even more convenient.

SMART CONNECTIONS.

The smart solution for your business.



SMART **CONNECTIVITY**



SMART **PRODUCTS**



SMART **PARTNERSHIPS**



SMART **BUSINESS**



SMART **IDENTITY**



SMART **IDEAS**

SMART CONNECTIVITY:

Our smart connectivity solution MyQ is intuitive, reliable, secure and independent.

SMART PRODUCTS:

Smart products such as our MyQ compatible garage door openers will make you more competitive.

SMART PARTNERSHIPS:

Smart strategic partnerships with Google Nest, Apple and many more deliver decisive competitive advantages.

SMART BUSINESS:

You benefit from smart business solutions that include our sales app and digital media portal.

SMART IDENTITY:

With the world's market leader LiftMaster, you can rely on a global player with a strong and smart identity.

SMART IDEAS:

Smart ideas such as the integration of MyQ technology in vehicles help you to prepare your business for the future.

SMART CONNECTIONS. | **LiftMaster**

DESIGN MEETS TECHNOLOGY.

The state-of-the-art design of the Evolution line is the winner of a consumer design study. 10 design concepts were presented to ~1,000 consumers in 5 different countries in Europe.

Sustainability, innovation and design are supported by an increased travel speed, a fine set of accessories and warranty periods up to 10 years. This combination is second to none and will provide the user with the great experience one can expect from a world market leader.



CONVINCING PRODUCT FEATURES.



MyQ provides revolutionary technology for sectional garage doors automation. MyQ will make life easier as it allows monitoring and controlling the garage door from anywhere in the world by smartphone, tablet or computer.

0,8W

Sustainability – the low standby power consumption corresponds to savings of €10,00 per year compared to the majority of garage door openers that are installed around the world.



The quiet and smooth operation is second to none, too – try it out!



Evolution Radio (Security+ 2.0) provides the most reliable frequency we ever offered. Evolution garage door openers are equipped with our best radio performance ever.



Saving up to 50% installation time. With only using one size tool, you can assemble the complete installation within seconds.



Long-lasting LEDs (up to 50,000 hours of service), no warm up phase, so the light is bright immediately.



We also increase the warranty period to a maximum of 10 year (LM130EVS) to demonstrate that LiftMaster provides premium quality products.



The LiftMaster LM80EVF and LM100EVF models have an opening speed of max. 200mm/s which puts them in pole position in our portfolio.

QUALITY PROMISE.

The quality mission of LiftMaster is to exceed the expectations of our customers by providing exceptional products and services. We put quality at the forefront of everything we do, understanding that each of us is accountable and committed to continually improving the effectiveness of our Quality Management System and achieving quality objectives.



GARAGE DOOR OPENERS WITH MYQ TECHNOLOGY.



Confidently know what's going on at home with MyQ technology.

We have a full range of products that helps the homeowner to monitor and control the garage door or gate by connecting with smartphone, tablet or computer.

Staying connected and in control has never been easier.



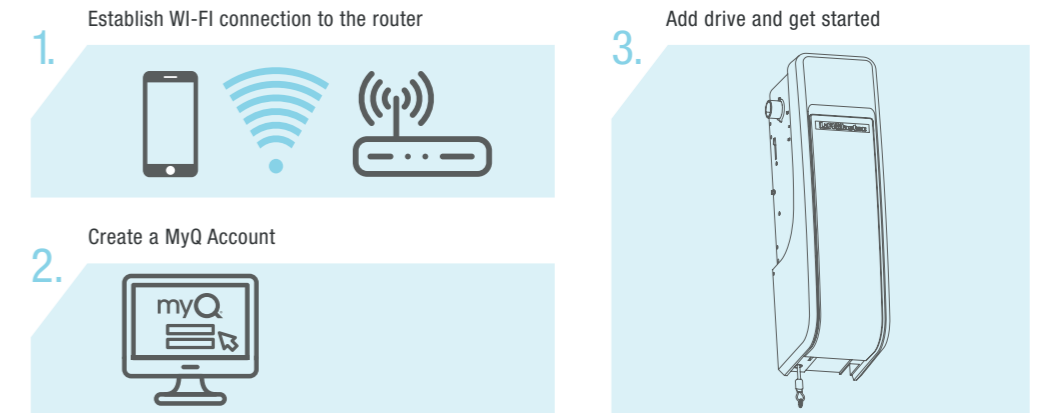
INNOVATIVE WI-FI TECHNOLOGY.

BENEFITS OF TECHNOLOGY:

- quick and easy setup directly on the drive via smartphone or tablet
- no separate gateway required



INTUITIVE AND FAST SETUP



* only LM3800W model

LIFTMASTER WORKS WITH NEST.



LiftMaster's MyQ technology is one of the Technology Partners that integrates with Nest Learning Thermostat and the Nest Cameras interact. LiftMaster MyQ users are able to set their Nest Learning Thermostat and Nest Cam using the MyQ app.

INNOVATION
HIGHLIGHT

LM3800W WI-FI MYQ DC PLUG-IN GARAGE DOOR OPENER

Maintenance-free plug-in garage door opener for sectional doors.



KEY FEATURES

WALL MOUNT RESIDENTIAL WI-FI GARAGE DOOR OPENER for quick and easy MyQ setup

SPACE-SAVING design allows versatile application

LIFTING POWER for doors up to 130 kg



SMART

INTEGRATED WIFI INTERFACE. ENABLES A SIMPLE AND QUICK SETUP VIA A SMARTPHONE. NO SEPARATE ACCESSORIES REQUIRED.

SPACE-SAVING DESIGN OFFERS SPACE FOR MORE.

SOFT-START AND SOFT-STOP FOR SMOOTH OPERATION.

INCLUDED E-LOCK MAKES UNAUTHORISED ACCESS TO THE GARAGE MORE DIFFICULT. UP TO TWO LOCKS CAN BE CONNECTED.

MYQ REMOTE-LED-LIGHT. LONG-LASTING AND BRIGHT LED LIGHT. MYQ-COMPATIBLE. MULTIPLE LIGHTS CAN BE CONNECTED. CAN BE OPERATED BY SMARTPHONE OR REMOTE CONTROL.

QUIET AND RELIABLE

QUIET DC MOTOR ELIMINATES NOISE AND VIBRATIONS THROUGH THE CEILING AND PROVIDES SMOOTH OPERATION.

HEAVY LIFTING POWER OPERATES DOORS UP TO 130 KG.

WARRANTY MOTOR: 5 YEARS, CONTROL BOARD: 5 YEARS ACCESSORIES: 2 YEARS.

SECURE & SAFE

AUTOMATIC GARAGE DOOR OPENERS IMPEDE UNAUTHORIZED ACCESS TO THE GARAGE.

TIMER-TO-CLOSE AUTOMATICALLY CLOSES THE DOOR AFTER A PRESET AMOUNT OF TIME.

EVOLUTION RADIO (SECURITY+ 2.0®) SENDS A NEW CODE WITH EVERY REMOTE CLICK.

AUTOMATIC FORCE SETTING & OBSTACLE DETECTION.

OPTIONAL BACK-UP BATTERY FOR POWER OUTAGES. TO BE INSTALLED IN THE INTEGRATED DRIVE'S BATTERY COMPARTMENT.

INCLUDED ACCESSORIES:

4-CHANNEL REMOTE CONTROL TX4EVF
Operates up to 4 openers. Compact to provide quick, easy garage access.

COUPLING 041-0003
Ensures a secure connection between the shaft and the drive.

E-LOCK 12V 841EU
Automatically locks the garage door every time you closed it.

MYQ REMOTE LED LIGHT 827EV
Long-lasting LED light with low power consumption for flexible positioning (1,500 lm).

POWERFUL ADD-ONS:

4-CHANNEL REMOTE CONTROL TX4EVS
The sliding cover prevents the consumer from unintended operation.

BACK-UP BATTERY 485EU
Battery status via LED Ready to plug in 12 V.

WIRELESS KEYPAD 747EV
Provides convenient, secure access from outside the garage with a 4-digit PIN, temporary PIN possible.

FAILSAFE SAFETY SENSOR 772E
Compatible with all LiftMaster garage and external door motors.

CABLE TENSION MONITOR 041A9264
Increases safety and prevents the door from crashing down. Cable included.

MASTERFUL ENGINEERING.

MOTOR

- Residential-Duty 12 V DC
- Automatic Thermal Protection
- Permanent Lubrication
- Operating Temperature: -30°C to 55°C

POWER

- 230-240 V AC
- 50 Hz
- 2.6 W Stand-by Power
- 170 cm Power Cord (Euro plug)¹

MECHANICS

- Improved cable routing through integrated cable duct
- High Quality Cover
- Battery compartment integrated in the drive unit
- Reliable and powerful plug-in garage door opener
- Automatic Force Setting
- Electronic Limits for Easy Setup
- Quick release

STANDARD SPECS.

EVOLUTION RADIO (Security+ 2.0®)

- High Range:
-
- 4-Button Remote Control (TX4EVF)
 - Remote Control: 868 MHz
 - Garage Door Opener: 433 and 868 MHz
 - Copy-Protected Coding

MYQ RADIO

- 868 / 433 MHZ
WI-FI 2.4 GHZ
- Provides 2-way communication from garage door opener and accessories.
 - Receiver with 64 memory registers.

HOMELINK® COMPATIBLE
(VERSION V OR SOFTWARE REV. 8)²

SHIPPING.

SHIPPING WEIGHT
(in kg)



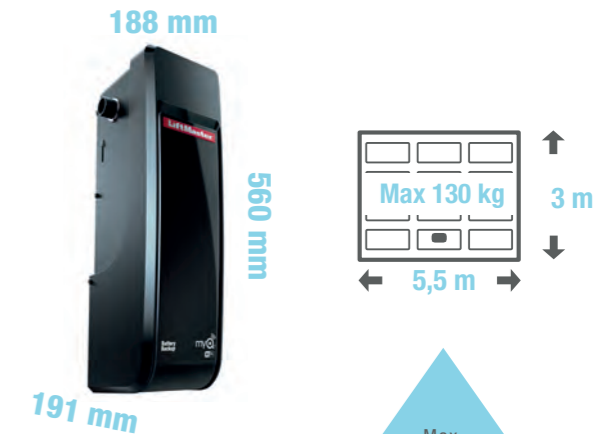
- CARTON: 39.5 cm x 24.3 cm x 23.5 cm
- Plug-in garage door opener (36Nm)
 - Two 4-Button Remote Control (TX4EVF)
 - Coupling, E-Lock
 - MyQ Remote LED Light

¹ UK adapter available.

² May require an external adapter depending on the model and year of your vehicle. Visit HomeLink.com for additional information.

WI-FI MYQ DC PLUG-IN GARAGE DOOR OPENER
FOR DOORS UP TO 130 KG

36 Nm



Max. 36 U/min.

Rounds per minute for door to move upward

Max. 20 U/min.

Rounds per minute for door to move downward

ELECTRICAL LIGHTING LED LIGHT

- LED turns on with activation
- Turns off 2.5 minutes after operation
- 0.8 W Stand-by Power

SICHERHEIT.

- Down Safety Reverse
- 2. Lock can be connected (optional 841EU)
- Up Safety Stop
- Soft-start and Soft-stop
- Timer to Close (automatic close) Programming (when safety sensors connected)
- Up to 2 cable tension monitor switches can be connected
- Flashing Light Connector

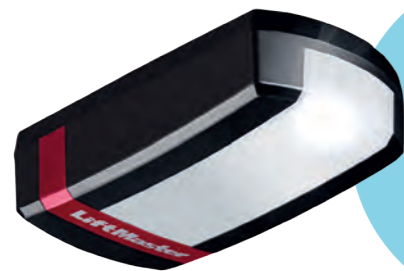


LM3800W 36 Nm
WI-FI MYQ DC PLUG-IN GARAGE DOOR OPENER
FOR DOORS UP TO 130 KG

LM130EVF MYQ DC GARAGE DOOR OPENER

Maintenance-free, ultra-quiet including safety sensors and LED light.

KEY FEATURES



SPACE-SAVING

Design maximizes versatility

LED LIGHT

LED turns on with activation

HEAVY LIFTING

For doors up to 200 kg

MYQ

Built In



SMART

SPACE-SAVING DESIGN OPENS UP THE CEILING.

BELT DRIVE SYSTEM FOR POWERFUL PERFORMANCE.

SOFT-START AND SOFT-STOP FOR SMOOTH OPERATION.

MYQ MOBILE APP LETS USERS RECEIVE ALERTS AND CONTROL THE OPENER FROM ANYWHERE.

QUIET AND RELIABLE

QUIET DC MOTOR ELIMINATES NOISE AND VIBRATIONS THROUGH THE CEILING AND PROVIDES SMOOTH OPERATION.

HEAVY-LIFTING POWER OPERATES DOORS UP TO 200 KG.

MAINTENANCE-FREE BELT DRIVE ENSURES QUIET & DURABLE OPERATION.

WARRANTY MOTOR: 10 YEARS, CONTROL BOARD: 5 YEARS, ACCESSORIES: 2 YEARS.

SECURE & SAFE

AUTOMATIC GARAGE DOOR OPENERS IMPEDE UNAUTHORIZED ACCESS TO THE GARAGE.

TIMER-TO-CLOSE AUTOMATICALLY CLOSES THE DOOR AFTER A PRESET AMOUNT OF TIME.

EVOLUTION RADIO (SECURITY+ 2.0®) SENDS A NEW CODE WITH EVERY REMOTE CLICK.

AUTOMATIC FORCE SETTING & OBSTACLE DETECTION.

FAILSAFE INFRARED SENSOR AUTO-REVERSES THE DOOR IF THERE'S AN OBSTRUCTION.

INCLUDED ACCESSORIES:

4-CHANNEL REMOTE CONTROL

Operates up to 4 openers. Compact to provide quick, easy garage access.



TX4EVF

2-BUTTON WIRELESS WALL CONTROL

Operates up to 2 openers. Control your garage door without a remote control.



128EV

FAILSAFE SAFETY SENSOR KIT

Incl. wall mount and cables. LED indicates the IR sensors continuity.



771EVK

POWERFUL ADD-ONS:

INTERNET GATEWAY

MyQ technology that connects to the internet and allows monitoring and control of the garage door opener.



828EV

GARAGE DOOR MONITOR

MyQ enabled technology allows monitoring and closing up to four garage doors from any room in the house.



829EV

WIRELESS KEYPAD

Provides convenient, secure access from outside the garage with a 4-digit PIN, temporary PIN possible.



747EV

LED FLASHING LIGHT

Lamp flashes while the drive is in action. Applicable for all garage door and gate door openers.



FLA1-LED

MASTERFUL ENGINEERING.

MOTOR

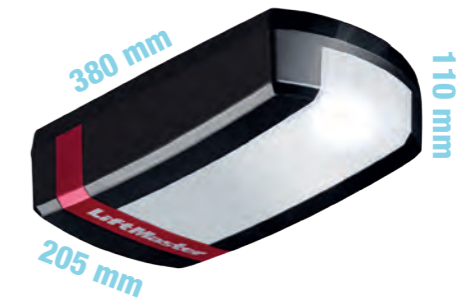
- Heavy-Duty 24 V DC
- Automatic Thermal Protection
- Permanent Lubrication
- Operating Temperature: -30°C to 55°C

POWER

- 230-240 V AC
- 50/60 Hz Voltage
- 0.8 W Stand-by Power
- 80 cm Power Cord (Euro plug)¹

MECHANICS

- High Quality Chassis and Cover
- Reliable & Quiet Belt Drive Mechanism
- Automatic Force Setting
- Electronic Limits for Easy Setup
- Maintenance-Free Operation thanks to Belt Drive
- 90° Rotation of Power Head for Space Saving



Max. 130 mm

Per second for door to move upward

Max. 130 mm

Per second for door to move downward

STANDARD SPECS.

EVOLUTION RADIO (Security+ 2.0®)

- High Range:
-
- 4-Button Remote Control (TX4EVF)
 - Remote Control: 868 MHz Tri-Band
 - Garage Door Opener: Frequency Agile on 433 and 868 MHz
 - Copy-Protected Coding

MyQ RADIO

- 433/868 MHz
- Provides 2-way communication from garage door opener and MyQ accessories.
 - Enables monitoring and control of garage door openers controls via smartphone, tablet or computer.
 - Receiver with 180 memory registers.

HOMELINK® COMPATIBLE
(VERSION V OR SOFTWARE REV. 8)²

LIGHTING LED LIGHT

-
- LED turns on with activation
 - Turns off 2.5 minutes after operation
 - 0.8 W Stand-by Power

SHIPPING.

SHIPPING WEIGHT (in kg)



- CARTON: 39.6 cm x 24.3 cm x 24 cm
- Garage Door Opener Head (1300N)
 - Two 4-Button Remote Control (TX4EVF)
 - 2-Button Wireless Wall Control (128EV)
 - Failsafe Safety Sensor Kit (771EVK)

SAFETY AND SECURITY.

- External Quick Release (optional)
- Automatic Trolley Reconnect
- Down Safety Reverse
- Up Safety Stop
- Flashing Light Connector
- Door-in-Door Connector
- Timer to Close (automatic close) Programming (when safety sensors connected)

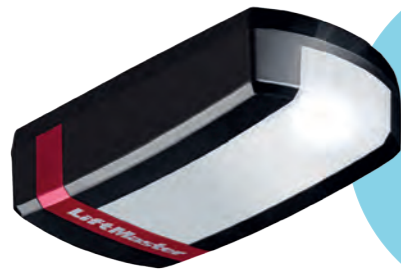
¹ UK adapter available.

² May require an external adapter depending on the model and year of your vehicle. Visit HomeLink.com for additional information.

LM100EVF MYQ DC GARAGE DOOR OPENER

Maintenance-free, ultra-quiet including LED light.

KEY FEATURES



SPACE-SAVING

Design maximizes versatility

LED LIGHT

LED turns on with activation

LIFTING

For doors up to 150 kg

MYQ

Built In



SMART

SPACE-SAVING DESIGN OPENS UP THE CEILING.

BELT DRIVE SYSTEM FOR POWERFUL PERFORMANCE.

SOFT-START AND SOFT-STOP FOR SMOOTH OPERATION.

MYQ MOBILE APP LETS USERS RECEIVE ALERTS AND CONTROL THE OPENER FROM ANYWHERE.

QUIET AND RELIABLE

QUIET DC MOTOR ELIMINATES NOISE AND VIBRATIONS THROUGH THE CEILING AND PROVIDES SMOOTH OPERATION.

HEAVY-LIFTING POWER OPERATES DOORS UP TO 150 KG.

MAINTENANCE-FREE BELT DRIVE ENSURES QUIET & DURABLE OPERATION.

WARRANTY MOTOR: 8 YEARS, CONTROL BOARD: 5 YEARS, ACCESSORIES: 2 YEARS.

SECURE & SAFE

AUTOMATIC GARAGE DOOR OPENERS IMPEDE UNAUTHORIZED ACCESS TO THE GARAGE.

TIMER-TO-CLOSE AUTOMATICALLY CLOSES THE DOOR AFTER A PRESET AMOUNT OF TIME.

EVOLUTION RADIO (SECURITY+ 2.0®) SENDS A NEW CODE WITH EVERY REMOTE CLICK.

AUTOMATIC FORCE SETTING & OBSTACLE DETECTION.

INCLUDED ACCESSORIES:

4-CHANNEL REMOTE CONTROL

Operates up to 4 openers. Compact to provide quick, easy garage access.



TX4EVF

2-BUTTON WIRELESS WALL CONTROL

Operates up to 2 openers. Control your garage door without a remote control.



128EV

POWERFUL ADD-ONS:

INTERNET GATEWAY

MyQ® technology that connects to the internet and allows monitoring and control of the garage door opener.



828EV

GARAGE DOOR MONITOR

MyQ enabled technology allows monitoring and closing up to four garage doors from any room in the house.



829EV

WIRELESS KEYPAD

Provides convenient, secure access from outside the garage with a 4-digit PIN, temporary PIN possible.



747EV

LED FLASHING LIGHT

Lamp flashes while the drive is in action. Applicable for all garage door and gate door openers.



FLA1-LED

FAILSAFE SAFETY SENSOR

2-wire system with LiftMaster signal IP44, range 15 meters.



772E

MASTERFUL ENGINEERING.

MOTOR

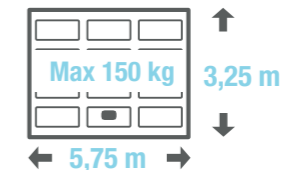
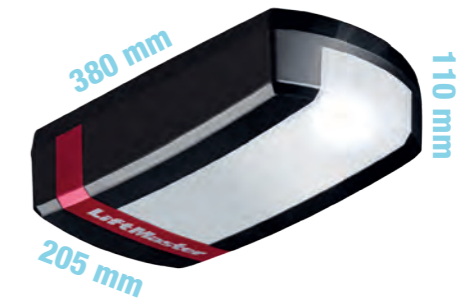
- Residential-Duty 24 V DC
- Automatic Thermal Protection
- Permanent Lubrication
- Operating Temperature: -30°C to 55°C

POWER

- 230-240 V AC
- 50/60 Hz Voltage
- 0.8 W Stand-by Power
- 80 cm Power Cord (Euro plug)¹

MECHANICS

- High Quality Chassis and Cover
- Reliable & Quiet Belt Drive Mechanism
- Automatic Force Setting
- Electronic Limits for Easy Setup
- Maintenance-Free Operation thanks to Belt Drive
- 90° Rotation of Power Head for Space Saving



Max. 200 mm

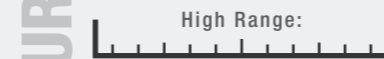
Per second for door to move upward

Max. 200 mm

Per second for door to move downward

STANDARD SPECS.

EVOLUTION RADIO (Security+ 2.0®)



- 4-Button Remote Control (TX4EVF)
- Remote Control: 868 MHz Tri-Band
- Garage Door Opener: Frequency Agile on 433 and 868 MHz
- Copy-Protected Coding

MyQ RADIO



- Provides 2-way communication from garage door opener and MyQ accessories.
- Enables monitoring and control of garage door openers controls via smartphone, tablet or computer.
- Receiver with 180 memory registers.

HOMELINK® COMPATIBLE
(VERSION V OR SOFTWARE REV. 8)²

LIGHTING LED LIGHT



- LED turns on with activation
- Turns off 2.5 minutes after operation
- 0.8 W Stand-by Power

SHIPPING.

SHIPPING WEIGHT
(in kg)



CARTON: 39.5 cm x 19.5 cm x 24 cm

- Garage Door Opener Head (1000N)
- Two 4-Button Remote Control (TX4EVF)
- 2-Button Wireless Wall Control (128EV)

SAFETY AND SECURITY.

- External Quick Release (optional)
- Automatic Trolley Reconnect
- Down Safety Reverse
- Up Safety Stop
- Flashing Light Connector
- Door-in-Door Connector
- Timer to Close (automatic close) Programming (when safety sensors connected)

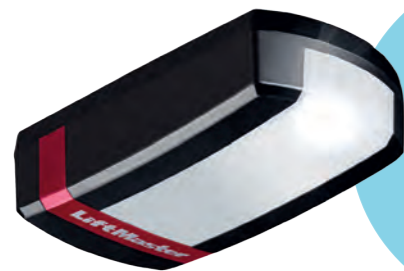
¹ UK adapter available.

² May require an external adapter depending on the model and year of your vehicle. Visit HomeLink.com for additional information.

LM80EVF MYQ DC GARAGE DOOR OPENER

Maintenance-free, ultra-quiet including LED light.

KEY FEATURES



SPACE-SAVING

Design maximizes versatility

LED LIGHT

LED turns on with activation

LIFTING

For doors up to 130 kg

MYQ

Built In



SMART

SPACE-SAVING DESIGN OPENS UP THE CEILING.

BELT DRIVE SYSTEM FOR POWERFUL PERFORMANCE.

SOFT-START AND SOFT-STOP FOR SMOOTH OPERATION.

MYQ MOBILE APP LETS USERS RECEIVE ALERTS AND CONTROL THE OPENER FROM ANYWHERE.

QUIET AND RELIABLE

QUIET DC MOTOR ELIMINATES NOISE AND VIBRATIONS THROUGH THE CEILING AND PROVIDES SMOOTH OPERATION.

HEAVY-LIFTING POWER OPERATES DOORS UP TO 130 KG.

MAINTENANCE-FREE BELT DRIVE ENSURES QUIET & DURABLE OPERATION.

WARRANTY MOTOR: 6 YEARS, CONTROL BOARD: 5 YEARS, ACCESSORIES: 2 YEARS.

SECURE & SAFE

AUTOMATIC GARAGE DOOR OPENERS IMPEDE UNAUTHORIZED ACCESS TO THE GARAGE.

TIMER-TO-CLOSE AUTOMATICALLY CLOSES THE DOOR AFTER A PRESET AMOUNT OF TIME.

EVOLUTION RADIO (SECURITY+ 2.0®) SENDS A NEW CODE WITH EVERY REMOTE CLICK.

AUTOMATIC FORCE SETTING & OBSTACLE DETECTION.

INCLUDED ACCESSORIES:

4-CHANNEL REMOTE CONTROL

Operates up to 4 openers. Compact to provide quick, easy garage access.



TX4EVF

2-BUTTON WIRELESS WALL CONTROL

Operates up to 2 openers. Control your garage door without a remote control.



128EV

POWERFUL ADD-ONS:

INTERNET GATEWAY

MyQ® technology that connects to the internet and allows monitoring and control of the garage door opener.



828EV

GARAGE DOOR MONITOR

MyQ enabled technology allows monitoring and closing up to four garage doors from any room in the house.



829EV

WIRELESS KEYPAD

Provides convenient, secure access from outside the garage with a 4-digit PIN, temporary PIN possible.



747EV

LED FLASHING LIGHT

Lamp flashes while the drive is in action. Applicable for all garage door and gate door openers.



FLA1-LED

FAILSAFE SAFETY SENSOR

2-wire system with LiftMaster signal IP44, range 15 meters.



772E

MASTERFUL ENGINEERING.

MOTOR

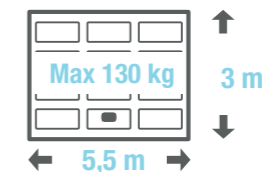
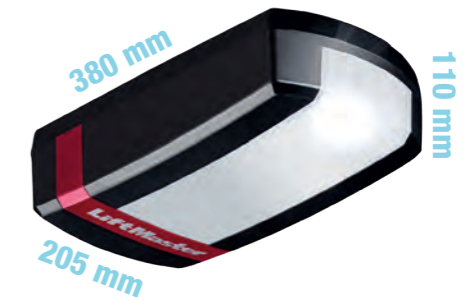
- Residential-Duty 24 V DC
- Automatic Thermal Protection
- Permanent Lubrication
- Operating Temperature: -30°C to 55°C

POWER

- 230-240 V AC
- 50/60 Hz Voltage
- 0.8 W Stand-by Power
- 80 cm Power Cord (Euro plug)¹

MECHANICS

- High Quality Chassis and Cover
- Reliable & Quiet Belt Drive Mechanism
- Automatic Force Setting
- Electronic Limits for Easy Setup
- Maintenance-Free Operation thanks to Belt Drive
- 90° Rotation of Power Head for Space Saving



Max.
200 mm
Per second
for door
to move
upward

Max.
200 mm
Per second
for door
to move
downward

STANDARD SPECS.

EVOLUTION RADIO (Security+ 2.0®)

High Range:



- 4-Button Remote Control (TX4EVF)
- Remote Control: 868 MHz Tri-Band
- Garage Door Opener: Frequency Agile on 433 and 868 MHz
- Copy-Protected Coding

MyQ RADIO

433/868 MHz

- Provides 2-way communication from garage door opener and MyQ accessories.
- Enables monitoring and control of garage door openers controls via smartphone, tablet or computer.
- Receiver with 180 memory registers.

HOMELINK® COMPATIBLE
(VERSION V OR SOFTWARE REV. 8)²

LIGHTING LED LIGHT



- LED turns on with activation
- Turns off 2.5 minutes after operation
- 0.8 W Stand-by Power

SHIPPING.

SHIPPING WEIGHT
(in kg)



CARTON: 39.5 cm x 19.5 cm x 24 cm

- Garage Door Opener Head (800N)
- Two 4-Button Remote Control (TX4EVF)
- 2-Button Wireless Wall Control (128EV)

SAFETY AND SECURITY.

- External Quick Release (optional)
- Automatic Trolley Reconnect
- Down Safety Reverse
- Up Safety Stop
- Flashing Light Connector
- Door-in-Door Connector
- Timer to Close (automatic close) Programming (when safety sensors connected)



¹ UK adapter available.

² May require an external adapter depending on the model and year of your vehicle. Visit HomeLink.com for additional information.

LM60EVF MYQ DC GARAGE DOOR OPENER

Maintenance-free, ultra-quiet including LED light.

KEY FEATURES



SPACE-SAVING

Design maximizes versatility

LED LIGHT

LED turns on with activation

LIFTING

For doors up to 100 kg

MYQ

Built In



SMART

SPACE-SAVING DESIGN OPENS UP THE CEILING.

BELT DRIVE SYSTEM FOR POWERFUL PERFORMANCE.

SOFT-START AND SOFT-STOP FOR SMOOTH OPERATION.

MYQ MOBILE APP LETS USERS RECEIVE ALERTS AND CONTROL THE OPENER FROM ANYWHERE.

QUIET AND RELIABLE

QUIET DC MOTOR ELIMINATES NOISE AND VIBRATIONS THROUGH THE CEILING AND PROVIDES SMOOTH OPERATION.

HEAVY-LIFTING POWER OPERATES DOORS UP TO 100 KG.

MAINTENANCE-FREE BELT DRIVE ENSURES QUIET & DURABLE OPERATION.

WARRANTY MOTOR: 5 YEARS, CONTROL BOARD: 5 YEARS, ACCESSORIES: 2 YEARS.

SECURE & SAFE

AUTOMATIC GARAGE DOOR OPENERS IMPEDE UNAUTHORIZED ACCESS TO THE GARAGE.

TIMER-TO-CLOSE AUTOMATICALLY CLOSES THE DOOR AFTER A PRESET AMOUNT OF TIME.

EVOLUTION RADIO (SECURITY+ 2.0®) SENDS A NEW CODE WITH EVERY REMOTE CLICK.

AUTOMATIC FORCE SETTING & OBSTACLE DETECTION.

INCLUDED ACCESSORIES:

2-CHANNEL REMOTE CONTROL

Operates up to 4 openers. Compact to provide quick, easy garage access.



TX4EVF

POWERFUL ADD-ONS:

INTERNET GATEWAY

MyQ® technology that connects to the internet and allows monitoring and control of the garage door opener.



828EV

GARAGE DOOR MONITOR

MyQ enabled technology allows monitoring and closing up to four garage doors from any room in the house.



829EV

2-BUTTON WIRELESS WALL CONTROL

Operates up to 2 openers. Control your garage door without a remote control.



128EV

WIRELESS KEYPAD

Provides convenient, secure access from outside the garage with a 4-digit PIN, temporary PIN possible.



747EV

LED FLASHING LIGHT

Lamp flashes while the drive is in action. Applicable for all garage door and gate door openers.



FLA1-LED

FAILSAFE SAFETY SENSOR

2-wire system with LiftMaster signal IP44, range 15 meters.



772E

MASTERFUL ENGINEERING.

MOTOR

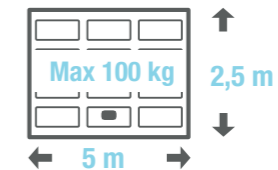
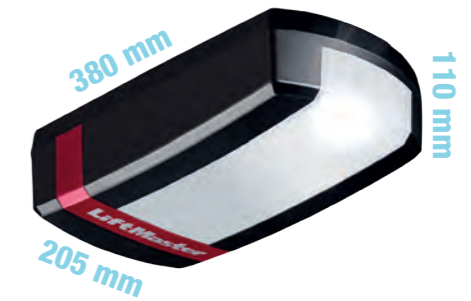
- Residential-Duty 24 V DC
- Automatic Thermal Protection
- Permanent Lubrication
- Operating Temperature: -30°C to 55°C

POWER

- 230-240 V AC
- 50/60 Hz Voltage
- 0.8 W Stand-by Power
- 80 cm Power Cord (Euro plug)¹

MECHANICS

- High Quality Chassis and Cover
- Reliable & Quiet Belt Drive Mechanism
- Automatic Force Setting
- Electronic Limits for Easy Setup
- Maintenance-Free Operation thanks to Belt Drive
- 90° Rotation of Power Head for Space Saving



Max. 160 mm

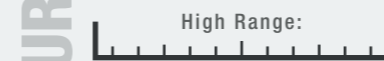
Per second for door to move upward

Max. 160 mm

Per second for door to move downward

STANDARD SPECS.

EVOLUTION RADIO (Security+ 2.0®)



- 4-Button Remote Control (TX4EVF)
- Remote Control: 868 MHz Tri-Band
- Garage Door Opener: Frequency Agile on 433 and 868 MHz
- Copy-Protected Coding

MyQ RADIO



- Provides 2-way communication from garage door opener and MyQ accessories.
- Enables monitoring and control of garage door openers controls via smartphone, tablet or computer.
- Receiver with 180 memory registers.

HOMELINK® COMPATIBLE (VERSION V OR SOFTWARE REV. 8)²

LIGHTING LED LIGHT



- LED turns on with activation
- Turns off 2.5 minutes after operation
- 0.8 W Stand-by Power

SHIPPING.

SHIPPING WEIGHT (in kg)



CARTON: 39.5 cm x 19.5 cm x 24 cm

- Garage Door Opener Head (600N)
- Two 4-Button Remote Control (TX4EVF)

SAFETY AND SECURITY.

- External Quick Release (optional)
- Automatic Trolley Reconnect
- Down Safety Reverse
- Up Safety Stop
- Flashing Light Connector
- Door-in-Door Connector
- Timer to Close (automatic close) Programming (when safety sensors connected)

¹ UK adapter available.

² May require an external adapter depending on the model and year of your vehicle. Visit HomeLink.com for additional information.

LM55EVF DC GARAGE DOOR OPENER

Maintenance-free, ultra-quiet including LED light.

KEY FEATURES



SPACE-SAVING
Design maximizes versatility

LED LIGHT
LED turns on with activation

LIFTING
For doors up to 90 kg



SMART

SPACE-SAVING DESIGN OPENS UP THE CEILING.

BELT DRIVE SYSTEM FOR POWERFUL PERFORMANCE.

SOFT-START AND SOFT-STOP FOR SMOOTH OPERATION.

QUIET AND RELIABLE

QUIET DC MOTOR ELIMINATES NOISE AND VIBRATIONS THROUGH THE CEILING AND PROVIDES SMOOTH OPERATION.

HEAVY-LIFTING POWER OPERATES DOORS UP TO 90 KG.

MAINTENANCE-FREE BELT DRIVE ENSURES QUIET & DURABLE OPERATION.

WARRANTY MOTOR: 3 YEARS, CONTROL BOARD: 3 YEARS, ACCESSORIES: 2 YEARS.

SECURE & SAFE

AUTOMATIC GARAGE DOOR OPENERS IMPEDE UNAUTHORIZED ACCESS TO THE GARAGE.

TIMER-TO-CLOSE AUTOMATICALLY CLOSES THE DOOR AFTER A PRESET AMOUNT OF TIME.

EVOLUTION RADIO (SECURITY+ 2.0®) SENDS A NEW CODE WITH EVERY REMOTE CLICK.

AUTOMATIC FORCE SETTING & OBSTACLE DETECTION.

INCLUDED ACCESSORIES:

4-CHANNEL REMOTE CONTROL TX4EVF
Operates up to 4 openers. Compact to provide quick, easy garage access.



POWERFUL ADD-ONS:

2-BUTTON WIRELESS WALL CONTROL 128EV
Operates up to 2 openers. Control your garage door without a remote control.



WIRELESS KEYPAD 747EV
Provides convenient, secure access from outside the garage with a 4-digit PIN, temporary PIN possible.



ILLUMINATED PUSH BUTTON 75EV
Wired push button.



FAILSAFE SAFETY SENSOR 772E
2-wire system with LiftMaster signal IP44, range 15 meters.



MASTERFUL ENGINEERING.

MOTOR

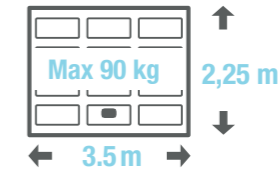
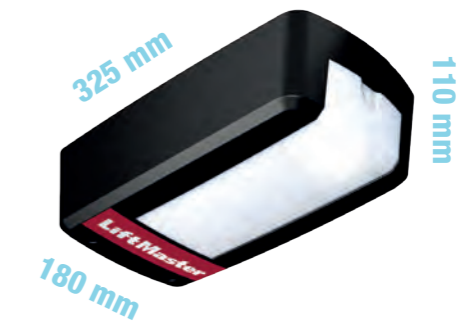
- Residential-Duty 24 V DC
- Automatic Thermal Protection
- Permanent Lubrication
- Operating Temperature: -30°C to 55°C

POWER

- 230-240 V AC
- 50/60 Hz Voltage
- 0.8 W Stand-by Power
- 80 cm Power Cord (Euro plug)¹

MECHANICS

- High Quality Chassis and Cover
- Reliable & Quiet Belt Drive Mechanism
- Automatic Force Setting
- Electronic Limits for Easy Setup
- Maintenance-Free Operation thanks to Belt Drive



Max. 100 mm

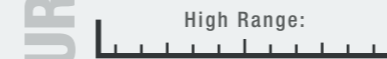
Per second for door to move upward

Max. 100 mm

Per second for door to move downward

STANDARD SPECS.

EVOLUTION RADIO (Security+ 2.0®)



- 4-Button Remote Control (TX4EVF)
- Remote Control: 868 MHz Tri-Band
- Garage Door Opener: Frequency Agile on 433 and 868 MHz
- Copy-Protected Coding

RADIO



- Provides 2-way communication from garage door opener and accessories.
- Receiver with 40 memory registers.

HOMELINK® COMPATIBLE
(VERSION V OR SOFTWARE REV. 8)²

LIGHTING LED LIGHT



- LED turns on with activation
- Turns off 2.5 minutes after operation
- 0.8 W Stand-by Power

SHIPPING.

SHIPPING WEIGHT
(in kg)



CARTON: 39.5 cm x 24.3 cm x 23.5 cm
- Garage Door Opener Head (600N)
- Two 4-Button Remote Control (TX4EVF)

SAFETY AND SECURITY.

- External Quick Release (optional)
- Automatic Trolley Reconnect
- Down Safety Reverse
- Up Safety Stop
- Timer to Close (automatic close) Programming (when safety sensors connected)



¹ UK adapter available.

² May require an external adapter depending on the model and year of your vehicle. Visit HomeLink.com for additional information.

EVOLUTION GARAGE DOOR OPENERS.



| FEATURES OVERVIEW | | LM55EVF | LM60EVF | LM80EVF | LM100EVF | LM130EVF |
|---|--|----------------------------------|----------------------------------|----------------------------------|----------------------------------|----------------------------------|
| DOOR WIDTH | | | | | | |
| 1-PIECE GARAGE DOOR (mm) | | 3500 | 5000 | 5500 | 5750 | 6000 |
| SECTIONAL GARAGE DOOR (mm) | | 3500 | 5000 | 5500 | 5750 | 6000 |
| CANOPY DOOR (mm) | | n/a | 3000 | 3500 | 3500 | 4000 |
| DOOR HEIGHT | | | | | | |
| 1-PIECE GARAGE DOOR | | 2250 | 2500 | 3000 | 3250 | 3500 |
| SECTIONAL GARAGE DOOR | | 2250 | 2500 | 3000 | 3250 | 3500 |
| CANOPY DOOR | | n/a | 2500 | 2500 | 2500 | 2500 |
| GARAGE DOOR WEIGHT | | 90 kg | 100 kg | 130 kg | 150 kg | 200 kg |
| PULLING FORCE MAX. (N) | | 600 | 600 | 800 | 1000 | 1300 |
| VOLTAGE | | 220-240 V AC | 220-240 V AC | 220-240 V AC | 220-240 V AC | 220-240 V AC |
| FREQUENCY | | 50/60 Hz | 50/60 Hz | 50/60 Hz | 50/60 Hz | 50/60 Hz |
| SOFT-START - SOFT-STOP / SPEED MAXIMUM (mm/SEC) | | yes / 100 | yes / 160 | yes / 200 | yes / 200 | yes / 130 |
| STANDBY POWER CONSUMPTION (WATT) | | max. 0.8 | max. 0.8 | max. 0.8 | max. 0.8 | max. 0.8 |
| DUTY CYCLE | | S2 - 4min | S2 - 4min | S2 - 4min | S2 - 4min | S2 - 4min |
| WARRANTY / CYCLES (UP/DOWN=1X) | | 5000 | 10.000 | 10.000 | 15.000 | 15.000 |
| WARRANTY / YEARS FOR RESIDENTIAL USE | | 2 | 5 | 5 | 5 | 5 |
| MOTOR WARRANTY / YEARS FOR THE MOTOR RESIDENTIAL USE | | 3 | 5 | 6 | 8 | 10 |
| WARRANTY / YEARS FOR LOGIC BOARD | | 3 | 5 | 5 | 5 | 5 |
| ROTATION OF POWER HEAD (SPACE SAVING OPTION) | | no | yes | yes | yes | yes |
| AUTOMATIC LIGHT DELAY | | yes 2.5 min | yes 2.5 min | yes 2.5 min | yes 2.5 min | yes 2.5min |
| ELECTRONIC TRAVEL PROGRAMMING | | yes | yes | yes | yes | yes |
| MYQ SMART PHONE COMPATIBLE (WITH 828EV) | | no | yes | yes | yes | yes |
| GARAGE DOOR MONITORING (UP/DOWN) AUDIBLE & VISIBLE (WITH 829EV) | | no | yes | yes | yes | yes |
| APPLE (IOS), ANDROID COMPATIBLE (OPEN, CLOSE, MONITOR & ALERTS), WITH 828EV | | no | yes/free | yes/free | yes/free | yes/free |
| AUTOMATIC FORCE LEARNING | | yes | yes | yes | yes | yes |
| PUSH BUTTON CONNECTOR | | yes | yes | yes | yes | yes |
| DOOR-IN-DOOR CONNECTOR | | no | yes | yes | yes | yes |
| IR SENSOR CONTACT | | yes | yes | yes | yes | yes |
| FLASHING LIGHT CONNECTOR | | no | yes | yes | yes | yes |
| 30V OUTPUT POWER FOR EXTERNAL RECEIVER | | yes | yes | yes | yes | yes |
| UP-STOP-DOWN 2-CHANNEL PROGRAMMING W. TRANSMITTER | | no | yes | yes | yes | yes |
| TIMER TO CLOSE (AUTOMATIC CLOSE) PROGRAMMING (WITH SAFETY SENSORS) | | yes | yes | yes | yes | yes |
| 2ND DOOR STOP POSITION PROGRAMMING | | no | yes | yes | yes | yes |
| HOLIDAY MODE (DISABLE OF RADIO) USING 78EV | | no | yes | yes | yes | yes |
| RECEIVER TYPE | | EVO,6-Band | EVO,7-Band | EVO,7-Band | EVO,7-Band | EVO,7-Band |
| MEMORY | | 40 | 180 | 180 | 180 | 180 |
| FREQUENCIES | | 433 & 868 MHz | 433 & 868 MHz | 433 & 868 MHz | 433 & 868 MHz | 433 & 868 MHz |
| TRANSMITTER CODING SCHEME | | Evolution Radio (Security+ 2.0®) | Evolution Radio (Security+ 2.0®) | Evolution Radio (Security+ 2.0®) | Evolution Radio (Security+ 2.0®) | Evolution Radio (Security+ 2.0®) |
| TRANSMITTER TYPE (NUMBER OF CHANNELS) | | 4 | 4 | 4 | 4 | 4 |
| RAIL PROFILE IN MM | | 30 | 30 | 30 | 30 | 30 |

LM750EVGB MYQ DC ROLLING DOOR OPENER

Fast, silent & powerful DC motor with soft start and soft stop.



KEY FEATURES

HEAVY-DUTY DC MOTOR
with automatic force sensing

LIFTING
For doors up to 120 kg

LED LIGHT
LED turns on with activation

MYQ COMPATIBLE



SMART

MYQ MOBILE APP LETS USERS RECEIVE ALERTS AND CONTROL THE OPENER FROM ANYWHERE.

LOW STANDBY SAVES YOUR MONEY.

SPACE-SAVING DESIGN FOR MORE POSSIBILITIES.

SOFT-START AND SOFT-STOP FOR SMOOTH OPERATION.

QUIET AND RELIABLE

QUIET DC MOTOR 59 DB NOISE LEVEL ELIMINATES NOISE AND VIBRATIONS THROUGH THE CEILING AND PROVIDES SMOOTH OPERATION.

HEAVY LIFTING POWER OPERATES DOORS UP TO 120 KG. FOR DOORS UP TO 18m².

WARRANTY MOTOR: 5 YEARS, ACCESSORIES: 2 YEARS.

SECURE & SAFE

AUTOMATIC GARAGE DOOR OPENERS IMPEDE UNAUTHORISED ACCESS TO THE GARAGE.

TIMER-TO-CLOSE² AUTOMATICALLY CLOSES THE DOOR AFTER A PRESET AMOUNT OF TIME.

EVOLUTION RADIO (SECURITY+ 2.0[®]) SENDS A NEW CODE WITH EVERY REMOTE CLICK.

AUTOMATIC FORCE SETTING & OBSTACLE DETECTION.

AUDIBLE SIGNAL (OPTIONAL).

PARTIAL OPENING.

INCLUDED ACCESSORIES:

4-CHANNEL 868 MHZ REMOTE CONTROL TX4EVS
Operates up to 4 openers. Compact to provide quick, easy garage access.

2-BUTTON WIRELESS WALL CONTROL 128EV
Operates up to 2 openers. Control your garage door without a remote control.

LEISTUNGSSTARKES ZUBEHÖR:

INTERNET GATEWAY² 828EV
MyQ technology that connects to the internet and allows monitoring and control of the garage door opener.

WIRELESS KEYPAD 747EV
Provides convenient, secure access from outside the garage with a 4-digit PIN, temporary PIN possible.

FAILSAFE SAFETY SENSOR 772E
2-wire system with LiftMaster signal IP44, range 15 meters.

4-CHANNEL UNIVERSAL REMOTE CONTROL TX4UNIF
Operates up to 4 openers. Compact to provide quick, easy garage access.

GARAGE DOOR MONITOR² 829EV
MyQ enabled technology allows monitoring and closing up to four garage doors from any room in the house.

FAILSAFE SAFETY SENSOR 771EVK
2-wire system with LiftMaster signal IP44, range 10 meters.

¹In connection with MyQ.
²needs safety sensors.

MASTERFUL ENGINEERING.

MOTOR

- Heavy-Duty 24 V DC
- Automatic Thermal Protection
- Permanent Lubrication
- Operating Temperature: -25°C to 55°C

POWER

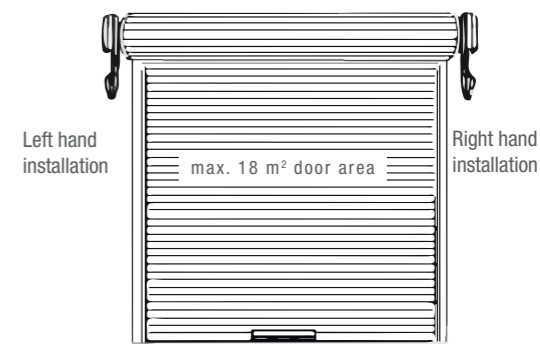
- 220-240 V AC
- 50/60 Hz Voltage
- 0.8 W Stand-by Power
- 175 cm Power Cord UK

MECHANICS

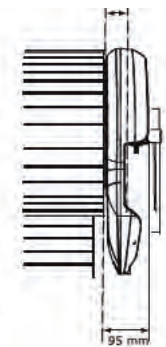
- High Quality Chassis and Cover
- Reliable & Powerful Direct Drive Mechanism
- Automatic Force Setting
- Electronic Limits for Easy Setup
- Maintenance-Free Operation



MYQ DC DIRECT DRIVE „ROLLING DOOR“ FOR DOORS UP TO 120 KG.



Minimum distance from edge of curtain to edge of door bracket 45 mm



STANDARD SPECS.

EVOLUTION RADIO (Security+ 2.0[®])

High Range:

4-Button Remote Control (TX4EVS)
- Remote Control: **868 MHz Tri-Band**
- Rolling Door Opener: Frequency Agile on 868, 433.30, 433.92 and 434.54 MHz
- Copy-Protected Coding

RADIO

868 / 433 MHz

- Provides 2-way communication from rolling door opener and accessories.
- Receiver with 64 memory registers.

HOMELINK[®] COMPATIBLE
(VERSION V ODER SOFTWARE REV. 8)¹

LIGHTING LED LIGHT



- LED turns on with activation
- Turns off 3 minutes after operation
- 0.8 W Stand-by Power

SHIPPING.

SHIPPING WEIGHT (in kg)
7
CARTON

CARTON: 48.5 cm x 32 cm x 22.5 cm

- Rolling Door Opener (550N)
- Two 4-Button Remote Control(TX4EVS)
- 2-Button Wireless Wall Control (128EV)

¹May require an external adapter depending on the model and year of your vehicle. Visit HomeLink.com for additional information.

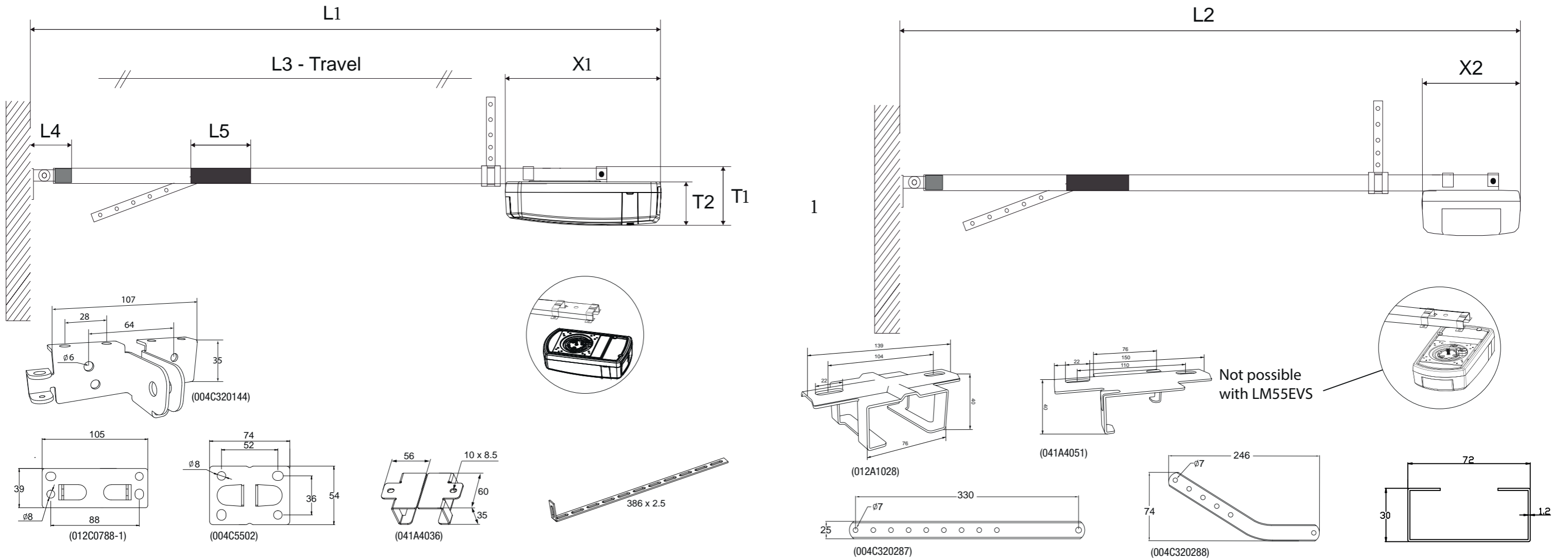
SAFETY AND SECURITY.

- External Quick Release (optional)
- Down Safety Reverse
- Up Safety Stop
- Soft-Start and Soft-Stop
- Timer to Close (automatic close) Programming (when safety sensors connected)



Overview C-Rails

TECHNICAL DETAILS AND SPECIFICATIONS OF THE C-RAIL.



| Opener | C-Rail model | Rail (mm) | L1 (mm) | L2 (mm) | L3 (mm) | L4 (mm) | L5 (mm) | X1 (mm) | X2 (mm) | T1 (mm) | T2 (mm) | Belt length (mm) |
|--|--------------|-----------|---------------------------------|---------|---------|---------|---------|---------|---------|---------|---------|------------------|
| LM60EVF LM80EVF LM100EVF LM130EVF | 8023CR5 | 2998 | 3183 | 3053 | 2498 | 180 | 165 | 380 | 210 | 142 | 110 | 5688 |
| | 8323CR5 | 2998 | 3183 | 3053 | 2498 | 180 | 165 | 380 | 210 | 142 | 110 | 5688 |
| | 8025CR5 | 3187 | 3372 | 3242 | 2687 | 180 | 165 | 380 | 210 | 142 | 110 | 6072 |
| | 8030CR5 | 3696 | 3881 | 3751 | 3196 | 180 | 165 | 380 | 210 | 142 | 110 | 7096 |
| | 810CR5 | 698 | Extension for 8023CR5 / 8323CR5 | | | | | | | | | 7096 |
| | 840CR5 | 985 | Extension for 8030CR5 | | | | | | | | | 9080 |
| LM55EVF | 8023CR5 | 2998 | 3151 | / | 2498 | 180 | 165 | 320 | 180 | 122 | 100 | 5688 |
| | 8323CR5 | 2998 | 3151 | | 2498 | 180 | 165 | 320 | 180 | 122 | 100 | 5688 |

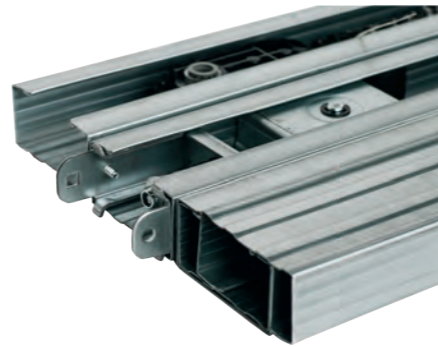
ACCESSORIES.

C-Rail.

ONLY ONE RAIL FOR ALL GARAGE DOOR OPENERS (LM55EVS/F, LM60EVS/F, LM80EVS/F, LM100EVS/F & LM130EVS/F)!
AVAILABLE IN 1, 2 OR 3 PARTS.

| 8023CR5 RAIL | 8025CR5 RAIL | 8030CR5 RAIL | 8225CR5 RAIL | 8323CR5 RAIL |
|--|--|--|---|---|
| <ul style="list-style-type: none"> 1-piece, 100% pre-assembled and part-tensioned Trolley travel: 2520 mm Total length: 3000 mm | <ul style="list-style-type: none"> 1-piece, 100% pre-assembled and part-tensioned Trolley travel: 2720 mm Total length: 3190 mm | <ul style="list-style-type: none"> 1-piece, 100% pre-assembled and part-tensioned Trolley travel: 3225 mm Total length: 3700 mm | <ul style="list-style-type: none"> 2-piece & one splices, pre-assembled (shipped folded) Trolley travel: 2720 mm Total length: 3190 mm | <ul style="list-style-type: none"> 3-piece & two splices, pre-assembled (shipped folded) Trolley travel: 2520 mm Total length: 3000 mm |

- 30 mm rail profile
- Belt (Steel reinforced material, 100% maintenance free)
- Trolley with pre-assembled straight door arm (330 mm)
- Pre-installed disconnect rope and handle
- Permanent and momentary disconnect feature
- Curved door arm included (246 mm)
- Lintel (above door) bracket included
- Door installation bracket
- Hanging brackets (2) included packaging



Rail extensions.

- 810CR5-02 Rail extension for rail 8023CR5 & 8323CR5
- 1-piece & 1 splice & new belt
 - Trolley travel: 3225 mm, total length: 3700 mm

- 840CR5 Rail extension for rail 8030CR5
- 1-piece & 1 splice & new belt
 - Trolley travel: 4210 mm, total length: 6570 mm

All rails are made of steel in a 30 mm C-profile.

Remote controls – car kit clip holder.



041A4060 - CAR KIT CLIP HOLDER

- Clip bracket for mounting the transmitter on the sun visor (TX2EV, TX4EV, TX4EVS, TX4UNI, TX4UNIS, TX4EVF and TX4UNIF)
- Kit includes: clip, screwdriver and screws

ACCESSORIES.

Remote controls.



TX4EVF 4-CHANNEL TRANSMITTER 868 MHz EVO CODE TX4UNIF 4-CHANNEL UNIVERSAL TRANSMITTER 433 MHz BILLION-, ROLLING- AND EVO CODE

The new transmitters, in our new distinguished car key type design are one of the highlights of the new EVF series. The matt black colour provides a very elegant accessory that one is proud to carry on the key chain. The simple operation via the extra large buttons offer additional comfort.

TX4EVF transmitters are included as standard on the openers of the EVF series (LM55EVF, LM60EVF, LM80EVF, LM100EVF and LM130EVF). A **blue LED** indicates that it is the **TX4EVF** at 868 MHz frequency.

The **TX4UNIF** universal transmitter can be used with any LiftMaster operator with Billion, Rolling or EVO code technology. The universal transmitter is available as a separate accessory, has a **white LED** and operates on 433 MHz. It can replace all 433 MHz transmitters (TX4UNI/S, 94330E, 94333E, 94335E, 94334E as well as 4330E, 4333E, 4335E).



TX4EVS - 4-Channel transmitter 868 MHz EVO Code

- The sliding cover prevents the consumer from unintended operation.
- Blue LED for battery control
- Compatible with the operators LM55EVS/F, LM60EVS/F, LM80EVS/F, LM100EVS/F and LM130EVS/F.



TX4UNIS - 4-Channel Universal transmitter with 433 MHz EVO, Rolling & Billion code

- The sliding cover prevents the consumer from unintended operation.
- Blue LED for battery control
- Works with all LiftMaster operators with Billion-, Rolling- or EVO code technology. The following transmitters can be replaced by TX4UNIS, TX4UNI/F, 94330E, 94333E, 94335E, 94334E and 4330E, 4333E and 4335E, 94335E, 94334E as well as 4330E, 4333E, 4335E.

Wall controls.



128EV - WIRELESS WALL CONTROL

- For Evolution radio
- With 433 Mhz Rolling code 2 channels
- Elegant design
- Easy to install



78EV - MULTIFUNCTION WALL CONTROL

- 4 function wired push button
- Open/close the door
- Switch on/off courtesy light
- Switch on/off receiver
- Train the transmitter without climbing up to the operator head



75EV - ILLUMINATED PUSH BUTTON

- Wired push button
- Illuminated

ACCESSORIES.

Convenience devices.



827EV - MYQ RADIO LED LIGHTING

Due to the special shape, size and remote connection to the drive unit, the luminaire can be positioned flexibly on the wall or ceiling (within 180cm of a 220V socket).

Control according to individual requirements possible thanks to numerous operating options:

- via smartphone via MyQ app*
- classic operation via drive unit (LM3800W) or multifunction console (78EV)
- customised with the hand remote TX4EVF, TX4EVS, TXUNIF, TX4UNIS

Lighting: LED, 1500 lm, 4000 k

Dimension: 21,59 x 21,59 x 6,35 cm



828EV - INTERNET GATEWAY

Revolutionary accessory with built-in MyQ technology that connects to the internet and allows monitoring and operating the garage door opener in or around your home or **from anywhere in the world** by using a smartphone, a tablet or a computer. It utilises a two-way communication system. **Easy and fast installation** through in-home router. No annual activation fee. Compatible with the following LiftMaster products: LM60EVS/F, LM80EVS/F, LM100EVS/F, LM130EVS/F.



829EV - GARAGE DOOR MONITOR

MyQ enabled technology allows **monitoring and closing up to four garage doors** from any room in the house. Green and red LEDs indicate whether the garage door is open or closed. Volume-controlled audible alert when the garage door is being opened.

Fast, easy installation. Compatible with the following LiftMaster products: LM60EVS/F, LM80EVS/F, LM100EVS/F, LM130EVS/F.



747EV - WIRELESS KEYPAD

for Garage Door Openers with EVO code

9747E - WIRELESS KEYPAD

for 5580KTX, LM3800TX with 433Mhz Rolling code.

Open or close garage door without using a remote control or key. The LiftMaster Wireless Keyless Entry System can open the door using a private 4-digit code. Allows temporary access codes for visitors. Completely **wireless**, powered by one 9-volt battery (included). Weatherproof flip-up protective cover. **Backlit keypad** makes numbers easy to see, even in the dark.

*Control via the MyQ app requires connection to the WIFI garage door drive or to the MyQ gateway (828EV).

Safety devices when using MyQ accessories.

In order to be compliant to current EU regulatory, IR sensors must be installed to use MyQ enabled accessories. The Garage Door Monitor 829EV as well as the Internet Gateway 828EV can be used with IR systems:



771EV - FAILSAFE SAFETY SENSOR

- For use with all LiftMaster garage door openers
- Current draw: 20 mA max., IP44
- Incl. LED indicates the IR sensor's continuity
- 2-wire system
- 10 meter range

ACCESSORIES.



G770E - SAFETY SENSOR

- Current draw: 13 mA max. / Operating voltage: 6 V, IP56
- For use with all LiftMaster garage door openers
- Red light LED indicates IR beam continuity

Safety devices.



771EVK - FAILSAFE SAFETY SENSOR

- For use with all LiftMaster garage door openers
- Current draw: 20 mA max., IP44
- Incl. LED indicator, wall fittings and 2 x 10 m cable
- 2-wire system
- 10 meter range



772E - FAILSAFE SAFETY SENSOR

- For use with all LiftMaster garage door openers
- Modern and attractive design
- IP44, range 15 meters
- 2-wire system with LiftMaster signal



772APE - MOUNTING PLATE FOR 772E

- Modern and attractive design
- Applicable with protective cover 772VPE



772VPE - PROTECTIVE COVER

- To prevent accidental damage and vandalism for 772E
- Modern and attractive design



600008 - IR SENSOR STAND - 530 mm

- Universally accommodates any IR sensor
- Powdercoat paint finish for rust resistance
- Heavy-duty steel construction



77C1 - ALUMINUM STAND 550 mm (PAIR)

- Aluminium stand for 772E
- Modern design
- Flexible use

ACCESSORIES.



77C2 - IR ALUMINUM STAND 1100 mm

- Aluminium stand for 772E
- Modern design
- Flexible use



16200LM - DOOR-IN-DOOR SWITCH

- For use with pedestrian doors within a garage door
- Prevents the operator from activating when the switch/pedestrian door is open
- Open/close switch, easy to connect to garage door opener
- Includes: switch (IP65)



77C2 - IR ALUMINUM STAND 1100 mm

- Aluminium stand for 772E
- Modern design
- Flexible use



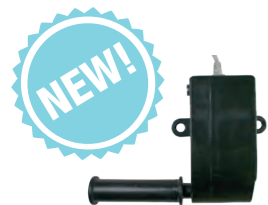
FLA1-LED - 24V LED FLASHING LIGHT

- Lamp flashes while the drive is in action
- Applicable for all garage door and gate door openers
- Content: lamp with control system and mounting hardware



841EU - E-LOCK FOR LM3800W

- Automatically locks the garage door every time you closed it
- 12V
- 10 m cable



041A9264 - CABEL TENSION MONITOR FOR LM3800W

- increases safety and prevents the door from crashing down
- cable included

ACCESSORIES.

Quick releases for garage door openers.



1702EV - QUICK RELEASE LOCK

- For exterior manual operation
- 1.8 m industrial strength connecting cord
- Non-corrosive stainless steel face plate
- Extension sleeve for doors up to 50 mm
- Connection between cord and trolley release
- Includes: lock, sleeve, cord, connectors and two keys



EQLO1EV - DOOR HANDLE QUICK RELEASE 2.5 m CORD LENGTH

- For exterior manual operation
- Use garage door handle and lock
- Includes: cable, hardware, adapters and instructions

Key lock devices.



100034 - KEYSWITCH 2-FUNCTION, FLUSH MOUNT

- Profile half cylinder
- 75 x 75 x 60 mm, ø 60 x 51 mm deep
- IP54, 3 keys



100041 - KEYSWITCH 2-FUNCTION, SURFACE MOUNT

- Profile half cylinder
- 75 x 75 x 50 mm
- IP54, 3 keys

Back-up battery.



485EU - BACK-UP BATTERY FOR LM3800W

- to be installed in the drive's integrated battery compartment
- ready to plug in 12 V

ACCESSORIES.

Canopy door arm.



1703REV - CANOPY DOOR ARM – THE CHAMBERLAIN ARM™

- Especially designed for the unique requirements of British canopy doors
- Delivered pre-assembled with an integral safety guard
- Easy installation
- Can open a canopy door to the full horizontal position
- Includes: fully assembled door arm, straight connecting arm, hardware and mounting template

Receiver.



860EV - 3-CHANNEL RECEIVER

- 3-channel receiver
- Channel 1: up to 50 transmitters - Channel 2: up to 20 transmitters - Channel 3: up to 20 transmitters
- Compact design
- Compatible to all TX transmitters 868 MHz and 433 MHz
- IP rating IP45 for outdoor use
- Switching time : 250 ms
- Relay contacts : max . 5 A , 28 V AC / DC
- Voltage / Power : 9-30 V AC or 9-34 V DC, 50 mA

Other accessories.



026B0127 - UK-ADAPTER

- Euro flat plug adapter to use in the UK



026B0177 - UK-ADAPTER

- Round plug adapter to use in the UK



G23015UNI-01 - 15 V AC TRANSFORMER

- Euro flat plug, GB 3 pin
- Cable – 1.8 m

SERVICE & CONTACT.

We are always happy to assist you with any questions you may have and to receive your feedback.
Call us @ +49 6838 907172 or send us an Email to info@chamberlain.com



GRACIAS
БЛАГОДАРИЮ
MERCİ
DANK U
DZIĘKUJĘ
YOU
TAKK
شكرا
TEŞEKKÜRLER
DANKE

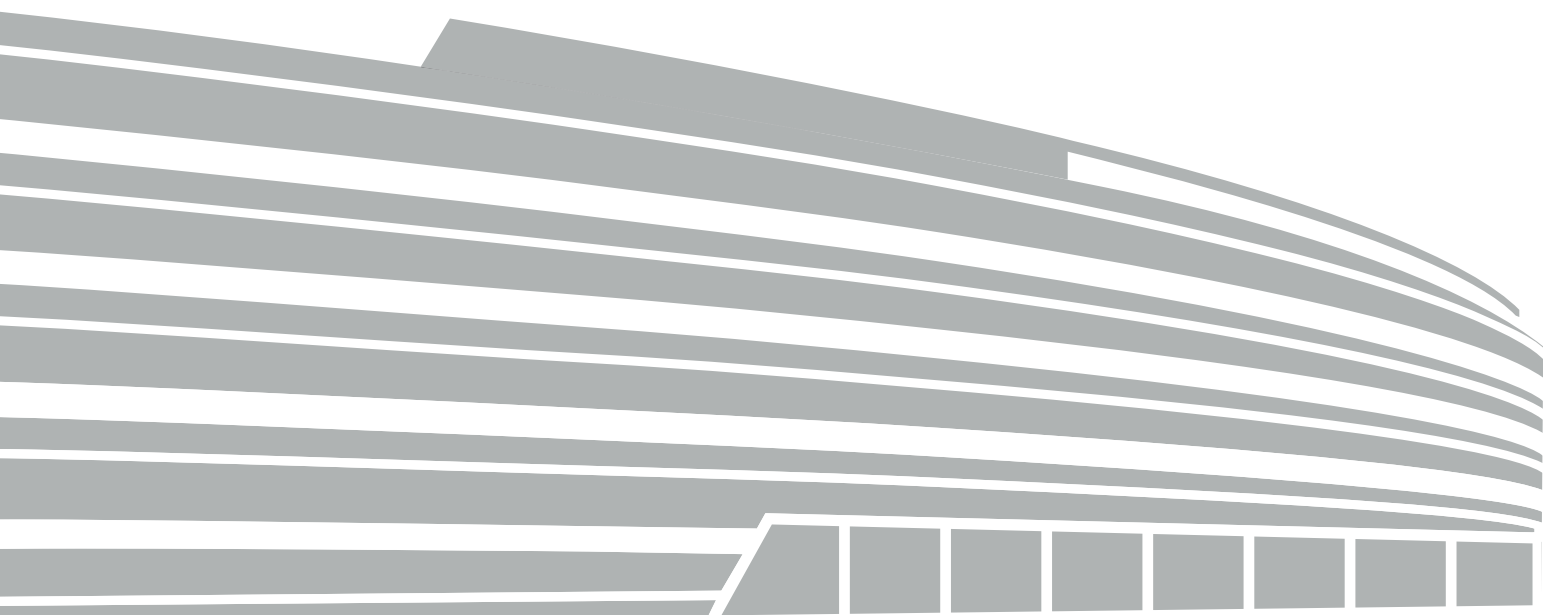
... for choosing a LiftMaster product.

CHAMBERLAIN GROUP

We give the power of access and knowledge.

Chamberlain Group (CGI) is a global leader in access solutions and products. As the corporate parent company to LiftMaster®, Chamberlain®, Merlin® and Grifco®, we design and engineer residential garage door openers, commercial door operators and gate entry systems. Our products are connected through our innovative MyQ Technology, which empowers users to control or monitor their entry points through smartphone access.

FOR MORE INFORMATION, VISIT CHAMBERLAINGROUP.COM



LiftMaster®

© 2019 LiftMaster all rights reserved
Chamberlain GmbH, Alfred-Nobel-Str. 4, D-66793, Saarwellingen
Please note – new address from June 2019:
Chamberlain GmbH, Saar-Lor-Lux-Str. 19, D-66115 Saarbrücken
LiftMaster.eu, WEEE-Reg.No. DE66256568
MyQ® is a registered trademark of the Chamberlain Group
HomeLink® is a trademark of Gentex Corporation Wi-Fi® is a
registered trademark of the Wi-Fi Alliance
CGDOENV1