



1 lockers



2 shelving



3 cupboards & work stations



4 kinetic mobile shelving



5 technic shelving



6 cloakroom



7 cabinets



8 ultrabox plastic lockers

PROBE
EDUCATION



PROBE
EDUCATION



EDUCATION LOCKERS...

Probe Lockers offer colour options for every level, from pre-school to college. From a simple cube upwards, the sheer variety of lockers available puts them at the top of every school's list for changing and storage requirements.

FREE ON-SITE ADVICE



LOCK OPTIONS

Probe offer a versatile range of locks ensuring a locker that is suited to your environment.

STRENGTH

Every locker has a full height strengthener welded inside each door to increase strength and security.

WELDED PLINTH

Probe Lockers have a welded plinth making each compartment totally separate and increasing structural rigidity.

5 KNUCKLE HINGES

This strong hinge offers great durability and security.



www.probe-lockers.ltd.uk

ALL STEEL CONSTRUCTION



- Quality engineered to provide a sturdy and robust locker that will give many years of service.
- Replacement locks and keys are available if required. Numbered cards, for locker identification, available on request.
- Built-in security features generate confidence that belongings will be kept safe.
- Durable powder coated finish with colour options to suit your environment.



hygienic, hard wearing and anti-bacterial
99.9% REDUCTION OF MRSA, E-COLI & BACTERIA for the life of the coating

PRIORITY SCHOOL BUILDING PROGRAMME

Priority School building Programme is a government initiative to rebuild or renew all secondary schools.



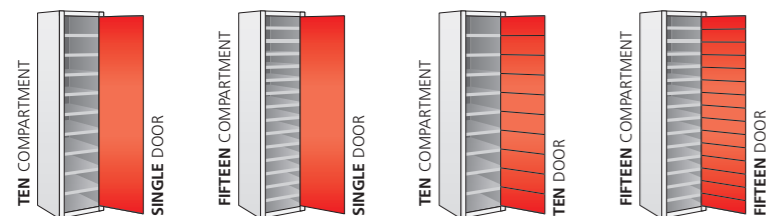
MEDIA TOWER

MEDIA DEVICE STORAGE, BOTH POWERED AND NON-POWERED

Probe offer a comprehensive range of media tower lockers for a variety of smart devices. You can choose from powered or non-powered, mobile or static, there's a media tower to suit your needs. This range incorporates **AC+IVECOAT**™ the world class anti-bacterial powder coating from Probe.



MEDIA TOWERS 10 OR 15 COMPARTMENT



ALL UNITS ARE AVAILABLE

POWERED OR **NON-POWERED**

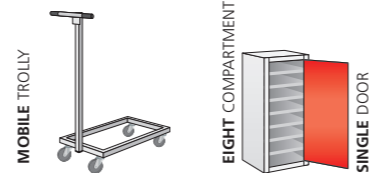
MAX DEVICE DIMENSIONS

max 370mm

max 420mm

Please consider the charging plug/lead when establishing if your device will fit in charging units.

MEDIA TOWER MOBILE PICTURED WITH DISH TOP



CHARGING AND SECURITY

TABLETS • APPLE DEVICES • IT EQUIPMENT LAPTOPS • SMART DEVICES • NETBOOKS

- Safe location of power socket.
- Comprehensive range of sizes and styles available.
- All charging units are CE marked.
- All doors are secured to the frame by a solid hinge.
- Units are manufactured from sturdy 0.9 and 0.7mm steel.
- All compartments have scratch resistant lock covers with the facility to number each door to help identification.
- A wide variety of locking solutions are available.
- Each charging compartment has a rear perforated panel for heat dissipation.



These lockers have been tested and passed using as a principle: **BS 6396:2008**

MEDIA TOWER LOW



AVAILABLE COLOURS

All Lockers are powder coated with **AC+IVECOAT**™ exclusive to Probe.

● = LOCKER DOOR COLOUR ▲ = LOCKER BODY COLOUR

- RED Similar to BS 04 E53
- BLUE Similar to RAL 5019
- ▲ WHITE RAL 9016

SHOCKproof™ lockers



Probe offer their high quality steel lockers with 10mm solid grade laminate **overlay and inset doors** (overlay pictured). For more about this amazing material visit trespa.com, formica.co.uk or arpaindustriale.com

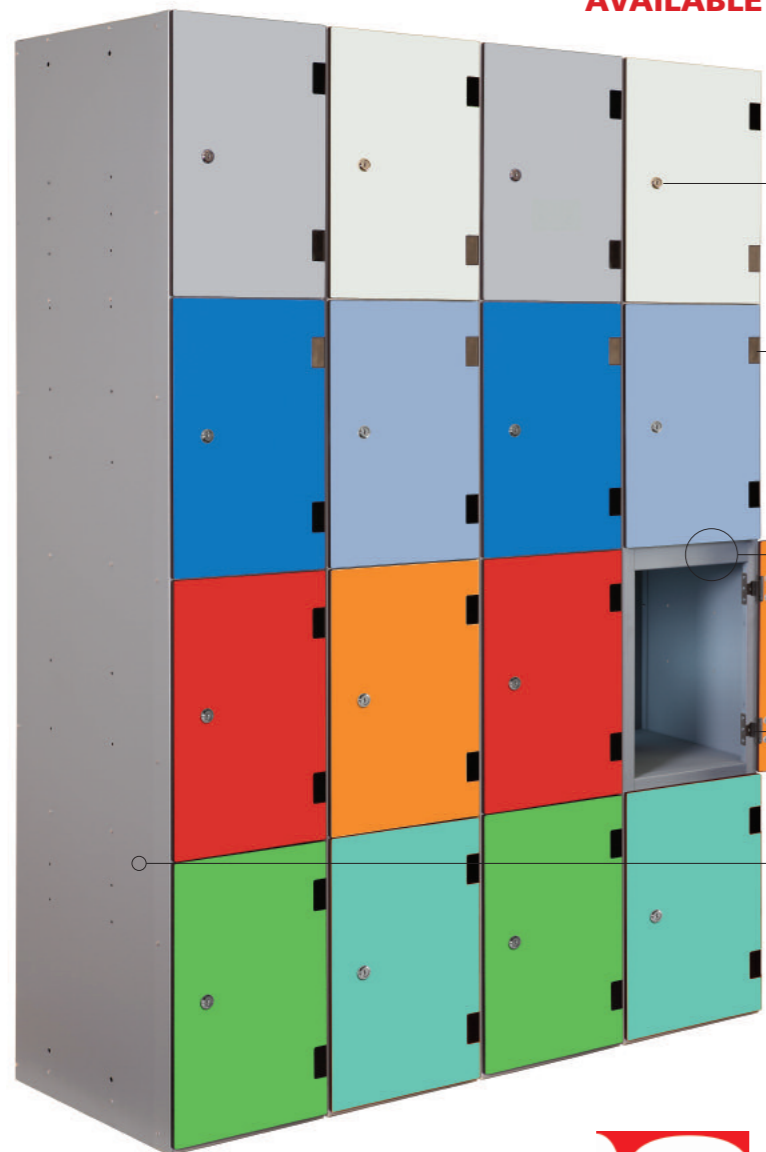


www.probe-lockers.ltd.uk

PRIORITY SCHOOL BUILDING PROGRAMME ✓

Priority School building Programme is a government initiative to rebuild or renew all secondary schools.

OVERLAY DOORS



OPTIONAL SLOPING TOP AVAILABLE



NUMBERING SYSTEM

Available at additional cost.
Number plates will be recessed into door if ordered with lockers.

LOCK OPTIONS

See page 26 for a wide range of lock options.

HINGE SECURING PLATE

This strong hinge incorporates an integral securing plate which clamps the door to the hinge giving added security.

HIGH SECURITY WELDED COMPARTMENT DIVIDER INCORPORATES INTERNAL DOOR STOP AND SILL

NEW 180° OPENING
This strong hinge offers 180° wide opening.



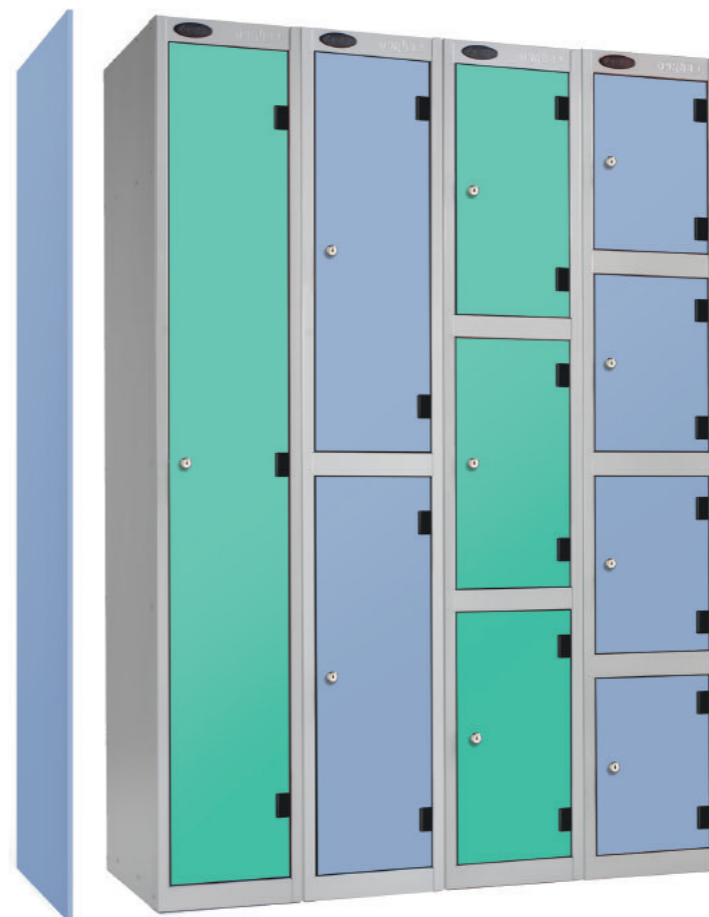
AVAILABLE IN 1, 2, 3 AND 4 TIER

Single and two tier doors subject to minimum quantity.

Formica and the Formica anvil device are registered trademarks of The Diller Corporation.



INSET DOORS



NEW 180° OPENING HINGE

This hinge offers unparalleled levels of access to each compartment making full use of clear entry.



LAMINATE DOORS



SOLID LAMINATE 10mm FIRE CLASSIFICATION
Type: CGS - Standard (Non-FR): Euroclass C-s1, d0 EN 13501-1
Type: CGF - FR (Fire Resistant): Euroclass B-s1, d0 EN 13501-1 (at additional cost)

STOCK DOOR COLOURS Single and two tier doors subject to minimum quantity.



STEEL BODY COLOUR



NON STOCK COLOURS Subject to minimum quantity of 15 doors. Hundreds of other colours available from alternative Laminate manufacturers.

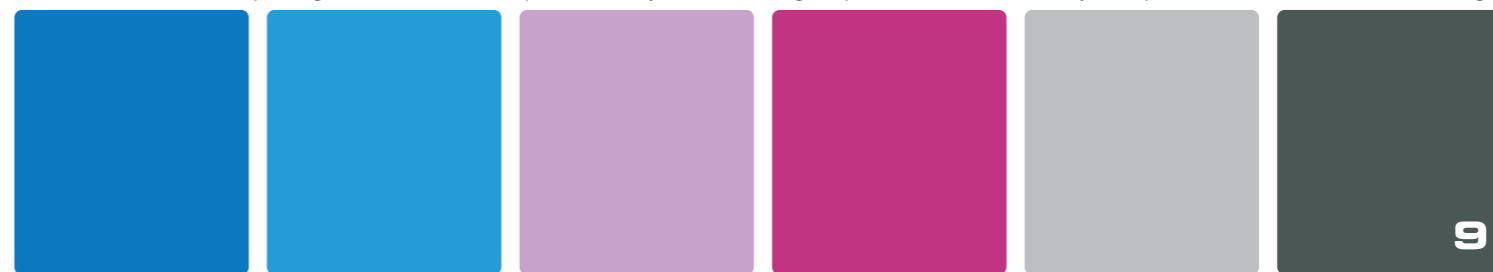
PLAIN COLOURS



WOODGRAIN EFFECT AND PATTERNED FINISHES



Please note that due to printing restrictions colours represented may differ from original product. We recommend you request a colour swatch before ordering.



NEW

ULTRABOX[®] PLASTIC LOCKERS

- ▶ NO ON-SITE ASSEMBLY
- ▶ VANDAL RESISTANT
- ▶ RUST PROOF
- ▶ 10 YEAR GUARANTEE^{††}
- ▶ WATERPROOF*
- ▶ ANTI-BACTERIAL
- ▶ ONE PIECE DESIGN FOR A NEATER FINISH AND SPEEDY INSTALLATION

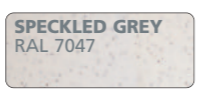


AVAILABLE COLOURS FOR ULTRABOX LOCKERS

DOOR COLOUR



BODY COLOUR



www.probe-lockers.ltd.uk

NO ASSEMBLY REQUIRED



^{††}Terms and conditions apply, see www.probe-manufacture.co.uk for details.

NEW

ULTRABOX®

STYLE, INDOORS OR OUTSIDE*

*If sheltered from direct rain

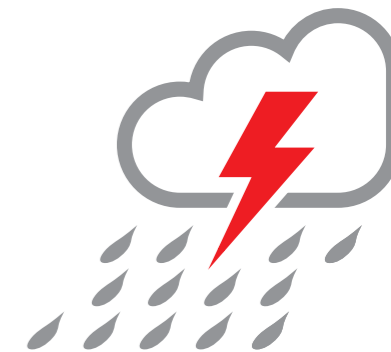


ULTRABOX INCLUDES LOCKS TYPE 1 OR 2

Request lock type at time of ordering. See page 10 for the full range of locks.

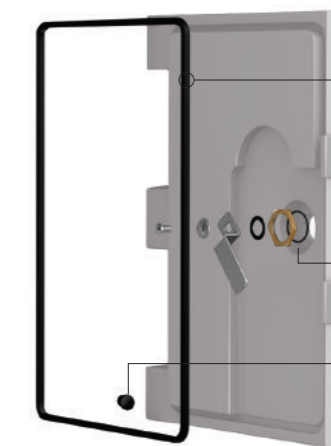
ULTRABOX PLUS⁺

PERFORMS IN THE MOST CHALLENGING ENVIRONMENTS



SEAL OUT THE WEATHER

WATERPROOF SEAL, PLUG AND LOCK GASKET MAKES THE ULTRABOX PLUS FULLY WATERPROOF



WATERPROOF DOOR SEAL

WATERPROOF LOCK AND GASKET

WATERPROOF DRAIN HOLE PLUG

ULTRABOX PLUS INCLUDES WATERPROOF LOCKS TYPE 2 OR 3

Request lock type at time of ordering. See page 10 for the full range of locks.

SUITABLE FOR THE MOST CHALLENGING ENVIRONMENTS AND ALL WEATHER CONDITIONS



PR OBE

www.probe-lockers.ltd.uk

CHALLENGING ENVIRONMENTS



hygienic, hard wearing and anti-bacterial
99.9% REDUCTION OF BACTERIA INCLUDING MRSA & E-COLI for the life of the coating