

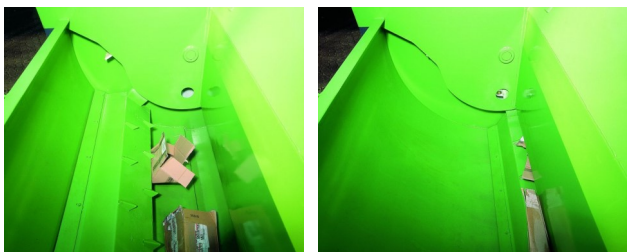


BERGMANN

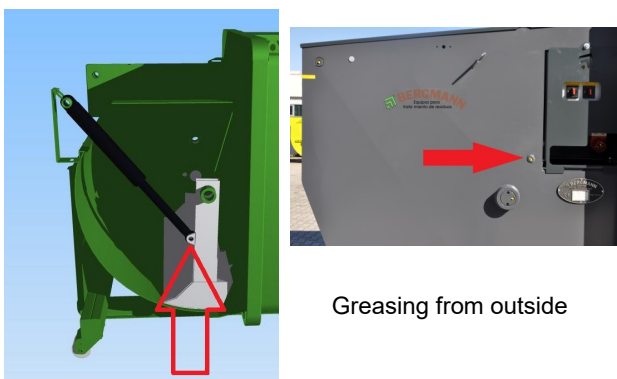
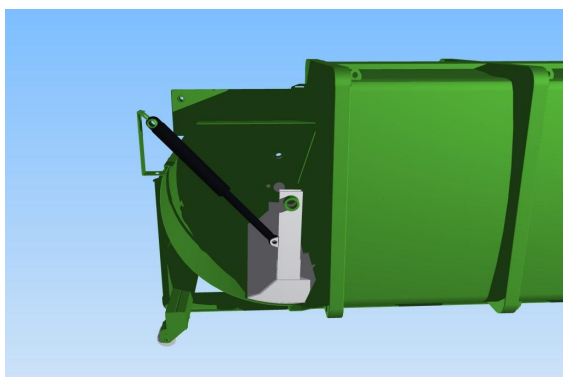
Mobil-Pack-Bin

MPB 918

General description



System of compaction



Greasing from outside



Removable aggregate

The Mobile-Pack-Bin is an **idea of the BERGMANN company**. In **the seventies**, this machine was introduced as first self-cleaning compactor to the market. The system is well received specially by **hospitals and homes for elderly**. The aim is to reduce the waste that is generated on location to a minimum of the volume and to decrease the transports drastically. Thus, **transport costs are reduced and traffic and environment are relieved**.

The Mobile-Pack-Bin type MPB 918 is a mobile selfcompaction container for the compaction of rest and wet waste. In particular the **self-cleaning** principle and the **high compaction results** amortise the acquisition costs in a short time.

The MPB 918 is equipped with a hydraulic single pump

The compaction principle is explained here with two pictures:

The MPB piston is **mounted oscillating** and is moved by two robust hydraulic cylinder. The outline of the piston is shovel-shaped. During the backward stroke the piston goes **under the material and throws it in front of the piston**. During the forward stroke the material is first pushed into the container and then compacted. As a result of the construction the material cannot reach under the piston and therefore **cleaning work in front of and under the piston blade are not required**. As the hydraulic cylinder are mounted in the upper part of the compaction unit, they do **not get in contact with the waste** and are not attacked by acids or other dangerous substances.

NEW! With the MPB 918 there is the possibility of lubricating internal bearings from the outside, as well as the pull-out hydraulic unit!

NEW! The hydraulic unit can be pulled out to the side, which means that maintenance and repair work can be carried out easily from the outside. Smallest sources of error, for example tripping of the motor protection switch can also be remedied by the operator. The main switch and the motor protection switch can be operated from the outside.

Technical characteristics



50 years of experience

Bergmann has been developing and producing machines for waste management for 50 years. The goal was and is to realize the transport costs through effective and highest compression with the lowest operating effort and lowest maintenance costs. All products are in-house ideas and developments. Particular attention was paid to durability and a robust design. Bergmann machines therefore have a lifespan of more than 20 years.

Safe technology

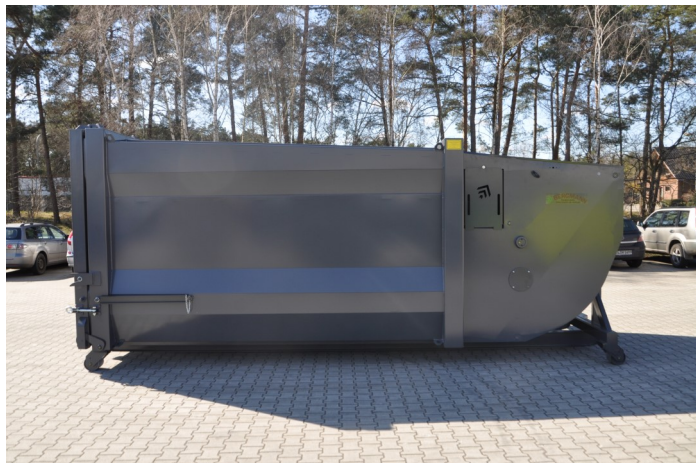
Through decades of experience, the waste press box type MPB 918 has been continuously developed with the help of customers. The machine complies with the current European machine guidelines CE.

Different application examples

Whether loading via ramp (possible thanks to the optional hook mount on both sides) or by an integrated lift-tipping device for example. The MPB is used almost everywhere at recycling centers.

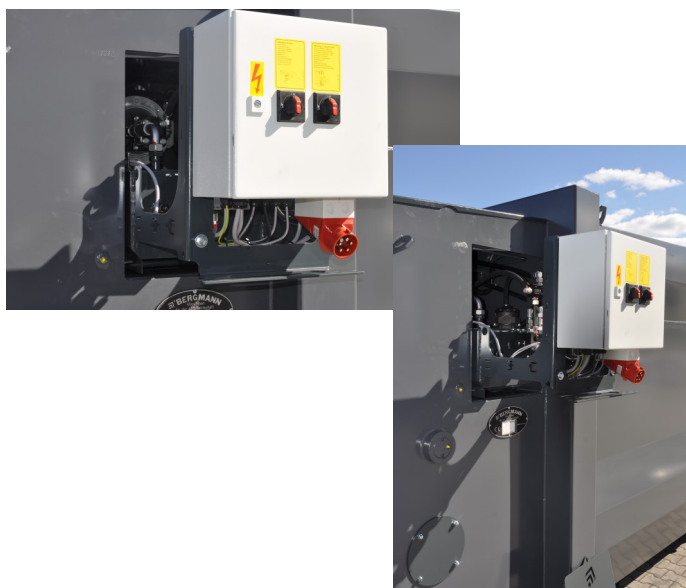


Technical characteristics



Container construction

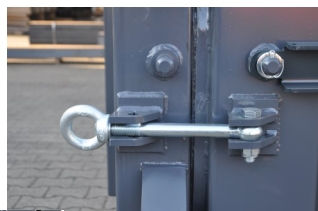
With the Bergmann self-pressing containers of the types MPB 918, the focus was on high strength with the lowest weight. The construction based on a double tapered container. This tapers are conically in the pressing direction and to the container roof. This facilitates the emptying of the contents.



Easy maintainance

The easily accessible and clearly arranged hydraulic unit simplifies all service and repair work.

NEW! The hydraulic unit can be pulled out to the side, making all maintenance work easy to perform from the outside. Main switch and motor protection switch can be operated from the outside!



Galvanized fittings

Movable and frequently used controls have to be robust and functional. That is why all closures, fittings, etc. are galvanized to protect them from the weather.



Technical characteristics



Discharge door and locking system

The MPB 918 is equipped as standard with a pendulum flap mounted at the top!

The door is closed / opened using a toggle and ratchet including a standard ratchet extension (approx. 1,700mm).

The galvanized lock ratchet is attached on the right in the pressing direction.



Hook at rear series

The mounting bracket on the **front** (no picture) is foldable as standard and adjustable for two heights (1450mm / 1570mm). The MPB 918 is equipped as standard with 4 plastic rollers W=160mm. The bracket on the discharge door is only used for shunting and NOT for transport on the transport vehicle and is attached at a height of approx. 1,450mm to 1,570mm!

OPTIONAL! Hook for transportation

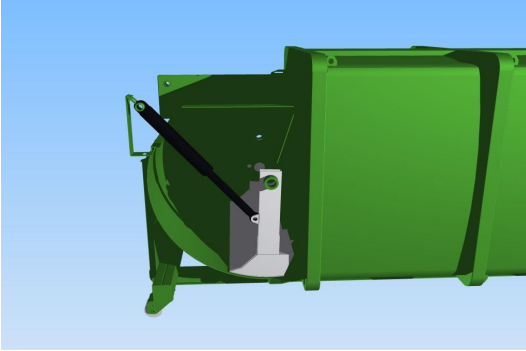
The mounting bracket on the unloading door can also be ordered for transport on both sides.

For this purpose, the technical requirements must be clarified in advance with the transport vehicle system. In this case, the hook is foldable and adjustable on hook heights of 1,450mm and 1,570mm.



Picture shows side hinged discharge door (optional)

Technical characteristics



BERGMANN Self-cleaning piston

Conventional compaction systems for self-press containers require regular cleaning efforts. If this work is not carried out regularly (1 time per week approx. 15-20 minutes) or neglected, this can cause malfunctions and repair costs in the three-digit range and higher. But not only the time and the possible additional costs, but also the danger to health is a decision criterium.

The working conditions for this cleaning work are no longer up-to-date, especially in winter weather with liquid components caused by rainwater and snow.

This effort and these costs do not occur with the self-cleaning Bergmann compression system. Cleaning work behind or under the piston is not necessary. The machine is emptied without any problems and can then be used again.

By eliminating cleaning work, the machine saves enormous labor costs.





BERGMANN
Machines for Waste Management
Von-Arenberg-Straße 7
D-49762 Lathen
Tel. +49 5933 955-0
Fax. +49 5933 955-294
info@bergmann-online.com