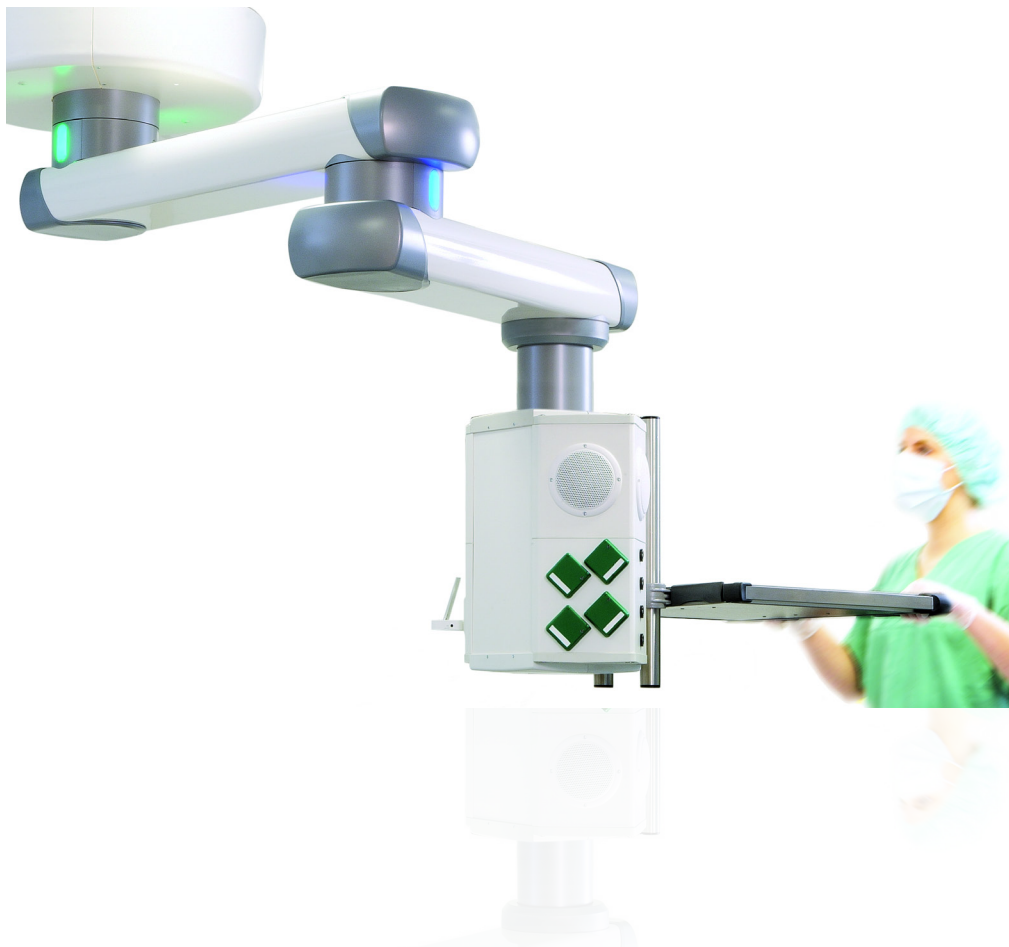




BEACONMEDÆS[®]

Part of the Atlas Copco Group

Ceiling Pendant Systems



Life
is in the
details.[®]



IN CRITICAL CARE AREAS

Whatever your needs may be, BeaconMedæ has a complete solution to seamlessly integrate with your department. Heavy Duty and Standard Duty pendant systems provide convenient access to critical equipment supported by an expertly engineered workstation.

- Designs are configured to your individual needs today, with the ability to expand for tomorrow
- Enclosed joints and easy clean surfaces minimise the cleaning effort
- Totally maintenance free systems with no bearing lubrication required, no parts to wear out
- Wet and dry consoles can readily exchange positions for maximum workspace flexibility

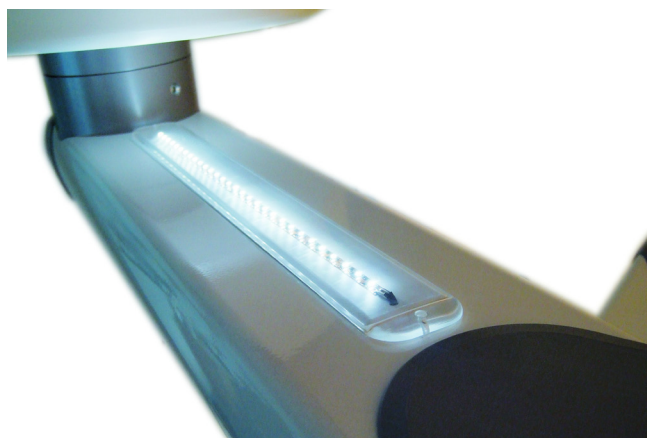
FOR SURGERY

With a range of pendants offering both lateral and vertical movement, custom manufactured console designs and a vast array of accessories, an infinite number of possibilities are available to enhance your workspace environment.

- Cantilever vertical lift arms for up to 200kg of equipment
- Solutions for all surgical disciplines, anaesthesia and auxiliary equipment support
- Oversize hoses for surgical air tools minimise losses, giving higher flows and higher pressure for precision work

KEY BENEFITS AT A GLANCE

- Cantilever and lateral Standard Duty or Heavy Duty arms options
- Range of arm lengths provide endless configurations to suit your work space requirements
- Fully customised to enable solutions for all areas such as OR and ITU
- CE certified and compliant to BS EN 60601-1 Safety Standards
- 330° degrees of rotation on each arm
- Cantilever vertical lift arm is designed to be fail-safe in the event of power failure
- Rotational stops are provided to ensure the pendant system is prevented from moving into walls or delicate equipment



FLEXIBILITY

Your care delivery adapts to suit individual patients needs, so it follows that equipment must be flexible to adapt to your changing needs too. In order to help you provide the best care in each case, our pendant systems are easily configured to provide a tailor made ergonomic workspace environment.

The improved brake guide system virtually eliminates faulty operation by colour coding the shelf operable brake buttons with the corresponding joint bearing, for increased user satisfaction.

RELIABILITY

The unique bearing design incorporated into each rotating arm joint has resulted in a smooth effortless movement, with minimal force required to accurately position even the heaviest of loads.

Robust extruded aluminium profiles have been engineered with the latest finite element analysis techniques to offer high load capacities, while maximising internal cross-sectional area. This provides more service carrying capacity than ever before with space to expand the service consoles to support tomorrow's innovations in medical technology.

ERGONOMIC DESIGN

To achieve maximum flexibility, a double-arm (articulated) pendant with cantilever vertical lift enables precise positioning of all essential services anywhere within a radius of up to 2.4m, and a height of 1.3-2m from the floor.

A lifting mechanism can be used to raise the anaesthesia workstation off the floor, enabling easy and free movement, without being hampered by trailing hoses and cables.

A custom 3D design software package enables us to create and refine each pendant specification with you in person, providing the best solution for each specific application.

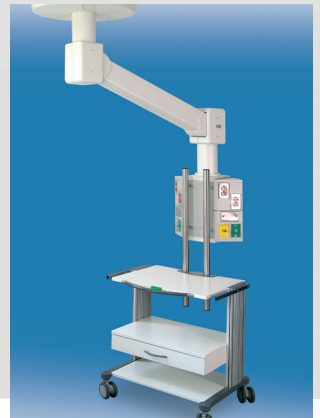


ACCESSORIES AND OPTIONS

Electromagnetic brakes	Increased performance and removes the need for compressed air supply
Pneumatic braking system	Installed as standard, prevents the system from rotating until desired
Variable LED Surround Lighting	Illuminates the floor area for increased usability
LED Ceiling Lighting	For room lighting
Music Systems	Including iPod/MP3 player docking and ceiling mounted spherical speaker for enhancing the user and patient experience
Anaesthesia Docking Device	Can lift up to 220 kg for improved product integration
Shelf Solutions	Height adjustable with a unique plug and play brake connection for quick connection of hand controls

Standard Duty - for Clinical Applications

Extension Arm Length/ Console Arm Length	Load with S.F. x 4
600mm	640kg
800mm	470kg
1000mm	370kg
1200mm	300kg
1000mm Vertical Lift	90kg
600mm/600mm	300kg
600mm/800mm	260kg
800mm/800mm	220kg
800mm/1000mm	190kg
1000mm/1000mm	170kg
1000mm/1200mm	150kg
600, 800mm/1000mm Vertical Lift	90kg
1000mm/1000mm Vertical Lift	75kg



Heavy Duty - for Highly Demanding Applications

Extension Arm Length/ Console Arm Length	Load with S.F. x 4
600mm	650kg
800mm	460kg
1000mm	360kg
1200mm	285kg
750mm Vertical Lift	200kg
1000mm Vertical Lift	150kg
600mm/600mm	280kg
600mm/800mm	230kg
800mm/800mm	190kg
800mm/1000mm	160kg
1000mm/1000mm	140kg
1000mm/1200mm	110kg
800mm/750mm Vertical Lift	200kg
800mm/1000mm Vertical Lift	150kg

BeaconMedæS pendant systems have been tested to 40,000 revolutions under the maximum loads shown with a safety factor of 4, ensuring faultless reliability. Other manufacturers may use alternative methods of calculation, such as applying a safety factor relating to catastrophic failure of the pendant system. This method is less stringent and does not provide an accurate comparison with the products described herein.

BeaconMedæS

Part of the Atlas Copco Group
 Telford Crescent, Staveley,
 Derbyshire, S43 3PF, England
 Tel: +44 (0) 1246 474 242
 www.beaconmedaes.com

PB12-010115

