



**OSS GROUP**  
WASTE SOLUTIONS ~ REFINED

# OSS GROUP LTD

## Parts Washer Instruction Manual



Last revised August '12

# Welcome to your new OSS Group Parts Washer

The OSS Parts Washer combines excellent degreasing capability with technology to recycle used solvent on demand, at the press of a button.

To get you started, the following features and functions are described within this guide:

- **Wash Function**
- **Recycling Function**
- **Solvent Top-Up procedure**
- **Consumables**
- **Troubleshooting**
- **L.E.D indicator information**

Please take time to read through this guide and familiarise yourself with the OSS Parts Washer.

Additionally, an Instructional Training Video is available to view online. To access this, please visit the following link:

[www.ossgroupltd.com/trainingvideo.php](http://www.ossgroupltd.com/trainingvideo.php)

For any further information, please contact us on **0870 2401 055** or email [partswashers@ossgroupltd.com](mailto:partswashers@ossgroupltd.com)



**OSS GROUP**  
WASTE SOLUTIONS ~ REFINED

# Wash Function

**The wash function offers the user the use of a flow-thru brush and hose, or a rinse/soak function with the adjustable spigot.**

## **To use the wash function:**

1. Ensure the machine is plugged into a grounded outlet before pressing the **Wash Button**.

2. Put on protective eyewear, gloves, clothing, and shoes before operating unit.

3. Lift the **Lid**. Be sure latch catches so lid is held in the open position.

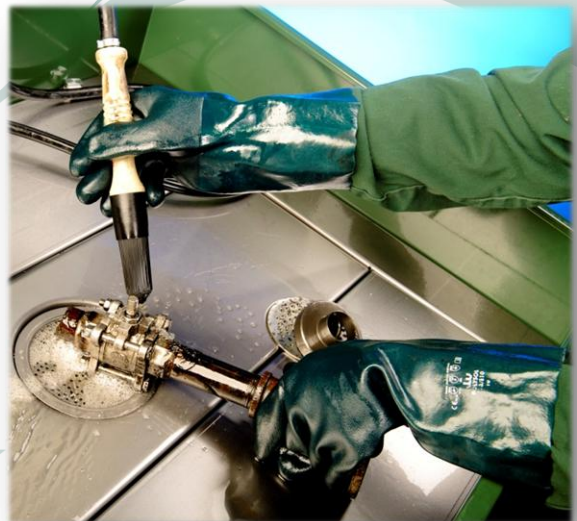
4. Wipe off loose or excess dirt from part or assembly, and drain all excess fluids before placing parts into the wash basin.

5. Adjust the **Nozzle** so that it is centred inside the wash basin.



## Wash Function - Continued

6. Push the **Wash Button** to start solvent flow through spigot and flow-through brush. Solvent flow will stop after 15 minutes or when the **Wash Button** is pressed again.
7. If solvent does not flow when the **Wash Button** is pressed, additional solvent may be transferred to the wash basin. Press and hold the **Wash Button** for twenty seconds. Repeat this procedure if necessary.
8. Clean all parts in the wash basin. Avoid splashing outside of the wash basin. Use a stiff brush to remove heavy deposits. When not in use, place the brush in the wash basin. Do not set brush down outside of the wash basin.
9. Drain clean parts in the wash basin for approximately 15 seconds or until dripping ceases.
10. Close lid when not in use.



**OSS GROUP**  
WASTE SOLUTIONS ~ REFINED

# Recycling Function

**When clean solvent is required from the parts washer, the user can simply press a button. The following process describes the process:**

1. Push **Recycle Button** once to transfer dirty solvent into the distillation tank and to return clean fluid to the wash basin. The clean fluid transfer takes about 4 minutes, after which time the operator may then resume use of the machine.

i) The machine drains contaminated solvent from the wash basin into the central chamber.

ii) Draws up previously recycled solvent from the main tank to rinse the wash basin.

iii) Fills up the wash basin with previously recycled solvent.

2. Although the recycling process may run for several hours, it will stop automatically once the cycle is complete. Once the recycle is complete there is a One Hour lockout period where another recycle process cannot be started. Do not unplug the unit during this process.



**Recycle Button**



## Recycling Function - Continued

3. Drain residue and wait until the machine cools down and the **Temperature Indicator** turns green. If black, do not touch.



4. Unscrew the **Drain Knob** and allow the residue to drain into a container. Reinstall the drain knob and dispose of the residue into your waste oil container.

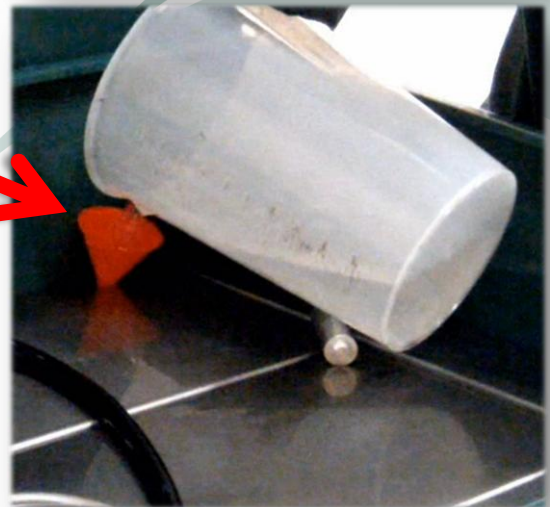
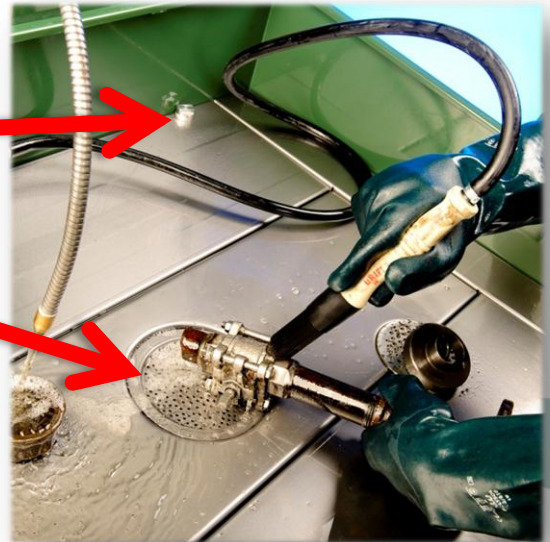


5. Empty **Filter Mesh** of any solids into appropriate waste container.

# Solvent Top-Up

**If the solvent level of the main tank is low, the unit will beep 4 times every 10 minutes.**

1. Unscrew **fill plug** and place to one side.
2. Remove the **metal mesh filter** from the middle tray. To create a hole.
3. Place a funnel into the **fill-plug hole** and pour in the solvent.
4. Main tank has been replenished when the overfill indicator begins “**spitting**” solvent. Stop procedure.



**You can order solvent top-ups in 25 litre containers from OSS by calling 0870 2401 055**



**OSS GROUP**  
WASTE SOLUTIONS ~ REFINED

# Consumables

**OSS can offer you additional products for your Parts Washer.**

**Call 0870 2401 055 for more information.**



Product	Includes:	Price
Top-Up Solvent	25 litres of top-up solvent for OSS parts washer	£35
Gauntlet Gloves	Solvent resistant gauntlet gloves	£10
Flow-Thru Brush	Replacement flow-thru parts cleaning brush	£12.50
Goggles	Parts cleaner compliant fully enclosed eye protection	£10
PPE Kit Bag	A handy PPE kit bag	£5
PPE Pack	Gauntlets, Goggles & Kit Bag	£20
Parts Washer Essentials Pack	Gauntlets, Goggles & Brush	£30
Parts Washer Super Value Pack	Top-Up Solvent, Gauntlets, Goggles, Brush & Kit Bag	£70



**OSS GROUP**  
WASTE SOLUTIONS ~ REFINED



# Troubleshooting

<b>Problem</b>	<b>Solution</b>
Wash pump not running	<ol style="list-style-type: none"><li>1. Press on/off button</li><li>2. Check power cord connection</li><li>3. Check circuit breaker</li><li>4. Contact OSS</li></ol>
Wash pump runs but no solvent	<ol style="list-style-type: none"><li>1. Check for low solvent level by removing the metal mesh filter.</li><li>2. Additional solvent may be transferred to the wash basin. Press and hold the on/off button for 20 seconds. Repeat procedure if necessary</li><li>3. Contact OSS</li></ol>
Recycle process not starting	<ol style="list-style-type: none"><li>1. Wait for 1 hour if unit has just completed a recycle. The unit has a 1 hour lockout.</li><li>2. Check Power connection</li><li>3. Check circuit breaker</li><li>4. Reset machine by turning power off at socket. Hold on/off button and at the same time turn power on at socket. Hold on/off button for 5 seconds then release. Try recycle button again.</li><li>5. Contact OSS</li></ol>
Solvent in distillation chamber	<ol style="list-style-type: none"><li>1. The wash basin was overfilled prior to recycle. Cycle may have stopped prior to completion.</li><li>2. Option 1: Distillation can be continued without transferring fluid from wash basin by pressing technician override button.</li><li>3. Option 2 : Press the recycle button to run a new distillation</li><li>4. Contact OSS</li></ol>
Solvent does not stay in wash basin	<ol style="list-style-type: none"><li>1. Remove debris around the pneumatic cylinder located under the trays at the back of wash basin.</li><li>2. Remove the pink pipe from the top of the pneumatic cylinder to release vacuum. Push pink pipe back onto pneumatic cylinder.</li><li>3. Reset machine.</li></ol>

# Troubleshooting - Continued

<b>Problem</b>	<b>Solution</b>
Vacuum pump sound louder than normal	<ol style="list-style-type: none"><li>1. Check for debris underneath the unit and rebalance it.</li><li>2. Distillation chamber is overfilled, remove excess fluid through the drain knob and press the technician override button to restart the distillation</li><li>3. Contact OSS</li></ol>
Wash basin overfilled	<ol style="list-style-type: none"><li>1. Too much solvent was transferred into the wash basin by holding the on/off button.</li><li>2. Main tank is too full and has overflowed into the wash basin. Remove the excess fluid from the wash basin.</li><li>3. Contact OSS</li></ol>
Machine is beeping	<ol style="list-style-type: none"><li>1. Fluid level is low in main tank.</li><li>2. Order solvent top up by contacting</li></ol>
Reset Unit	<ol style="list-style-type: none"><li>1. To reset unit turn machine power off at the socket.</li><li>2. Press and hold on/off button whilst turning power back on at socket.</li><li>3. Hold on/off button for 5 seconds</li><li>4. Release on/off button</li></ol>
Top up solvent in wash basin from main tank	<ol style="list-style-type: none"><li>1. Press and hold on/off button for twenty seconds.</li></ol>



# L.E.D. Indicator Information

**If there is a significant fault with the machine the LED indicator will flash to alert the problem:**

## **Number of flashes =**

- 1 - Fuse test failed at start of recycling operation
- 2 - Safety temperature switch opened
- 3 - Heater fuse(s) have failed
- 4 - Transfer solenoid fuse has failed
- 5 - Vacuum switch did not close before time to drain dirty fluid
- 6 - Vacuum switch did not open as dirty fluid drained into distillation tank
- 7 - Vacuum switch did not close when drawing vacuum to start distillation
- 8 - Vacuum switch opened during distillation



**Please do not try to fix the fault.  
The LED is a diagnosis device for  
you to describe to OSS.**



**OSS GROUP**  
WASTE SOLUTIONS ~ REFINED

[www.ossgrouppltd.com](http://www.ossgrouppltd.com)



**OSS GROUP**

WASTE SOLUTIONS ~ REFINED

**OSS Group Limited**

Registered office: Stockpit Road,  
Knowsley, Merseyside, L33 7TQ.

Registered in England

No. 3835964

Tel: 0870 2401 055